

ERRATUM NOTICE

OXFORD CAMBRIDGE AND RSA EXAMINATIONS

A2 GCE

F215

BIOLOGY

Control, Genomes and Environment

FRIDAY 15 JUNE 2012: Morning

MODIFIED ENLARGED

FOR THE ATTENTION OF THE EXAMS OFFICER

Instructions to Exams Officers

Page 12 of the Modified Enlarged F215 June 2012 examination paper contains an error in Fig. 2.1.

Fig. 2.1 on page 12 is a scale diagram. If the candidate requires an A3 24 point bold examination paper, Fig. 2.1 should **not** be enlarged by the centre.

When printing off this erratum, you must ensure that the page scaling setting is set to 'none' to ensure that Fig. 2.1 is printed to the correct scale.

Instructions to Invigilators

Page 12 of the Modified Enlarged F215 June 2012 examination paper contains an error in Fig. 2.1.

Before the start of the examination please ensure the following information is provided to candidates:

- Fig. 2.1 on page 12 of the Modified Enlarged examination paper should be crossed out.
- The replacement Fig. 2.1 accompanying this erratum should be used to complete Question 2.
- Candidates should **not** write on the replacement page.

Once the examination is completed, the replacement page 12 should **not** be sent for marking. It should be retained by the centre or destroyed.

Any enquiry about this notice should be referred to the Customer Contact Centre on 01223 553 998 or general.qualifications@ocr.org.uk

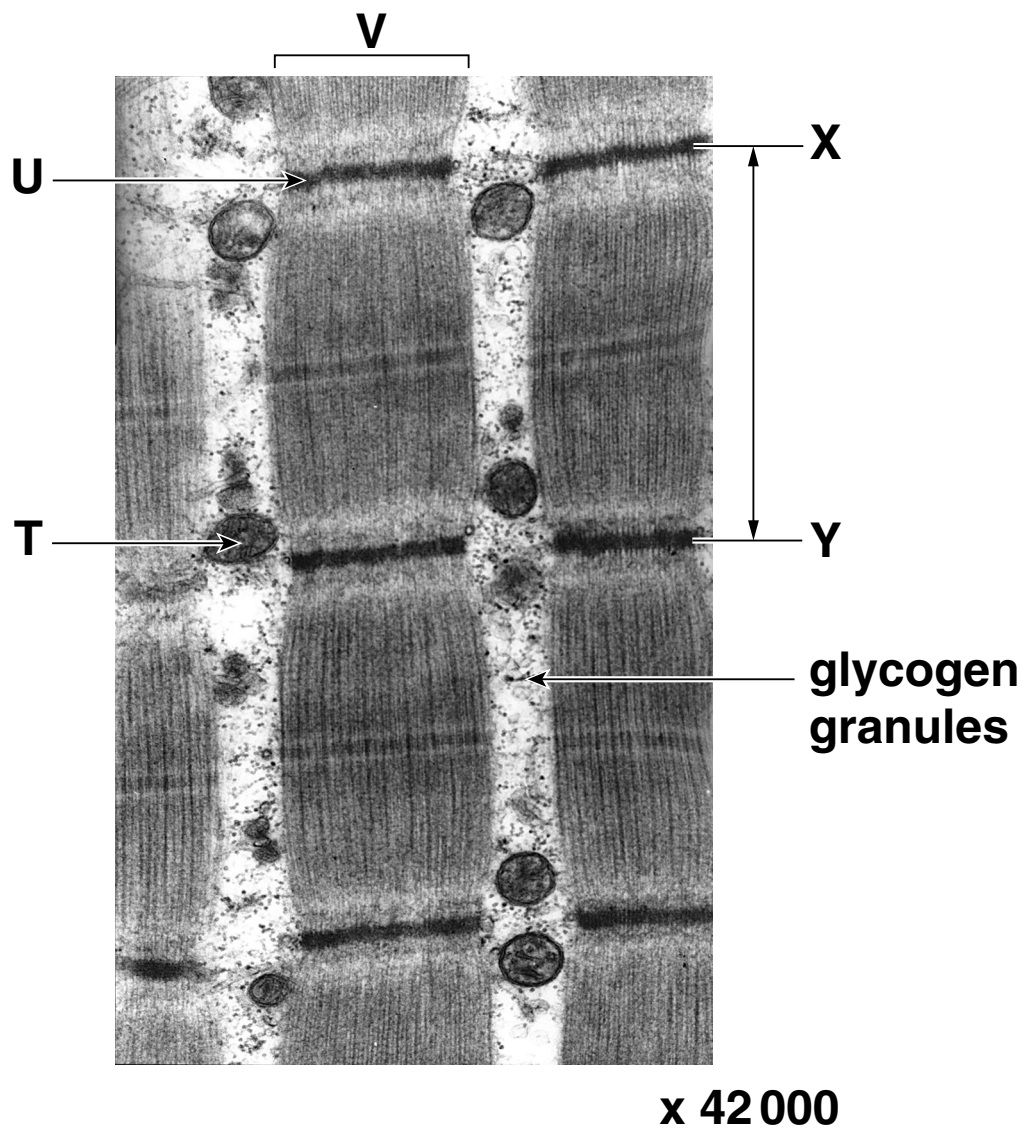


Fig. 2.1