



OXFORD CAMBRIDGE AND RSA EXAMINATIONS

**LEVEL 3 CERTIFICATE OF PROFESSIONAL
COMPETENCE FOR TRANSPORT MANAGERS
(PASSENGER TRANSPORT)**

05678

**UNIT P2 CERTIFICATE OF PROFESSIONAL COMPETENCE
(PASSENGER TRANSPORT) CASE STUDY**

FRIDAY 6 DECEMBER 2013

1.00 PM – 3.00 PM

TIME: 2 HOURS

CASE STUDY

Background

You are the General Manager of Jacobstow Coaches Limited (JaCo), a family-owned business based in North Cornwall. Its directors and only shareholders are husband and wife, Bill and Mary. Bill is the Managing Director and Mary is the Company Secretary. You lead the senior management team which is made up of Bill and Mary's three children: John is Operations Manager, James is Workshop Manager and Rose is Admin/Finance Manager.

Bill and Mary each hold an International CPC, gained more than ten years ago, and both are named on the Operator Licence as Transport Managers.

Other JaCo staff, many recently appointed, are:

- 1 Traffic Manager
- 12 full-time Drivers
- 6 part-time Drivers
- 1 Workshop Foreman
- 3 Vehicle Mechanics
- 1 Tours/Excursions Manager
- 1 Accounts Clerk
- 2 Bookings Clerks
- 2 Administrators

Company operations include school and works contracts, bus services, private hire and a programme of day excursions and extended tours.

It is company policy for drivers to make full use of all alternatives, derogations and extensions to drivers' hours regulations. All drivers are scheduled for 30 minutes at the beginning and 30 minutes at the end of each day for checks and paperwork. Drivers are paid a fixed daily rate while away from base on tour.

Financial Information for Vehicles Operated

	22-seat coach	35-seat coach	49-seat coach	53-seat coach
Standing costs and overheads (£/day)	85	160	180	170
Maintenance cost (£/km)	0.40	0.45	0.50	0.50
Tyre cost (£/km)	0.035	0.04	0.05	0.05
Driver wages cost (£/driver/day)	100	100	100	100
Overnight allowance (£/driver/night)	20	20	20	20
Fuel consumption (km/l)	6	5	4	4

Fig. 1

All fuel is purchased at £1.20 per litre.
20% mark-up is applied to all quotations and tenders.

New Work

BUS SERVICES

The Local Authority has issued tender documents for two new local services. This is a supply side tender. Details of the services, which cannot be changed, are as follows:

Service number	Start terminal	End terminal	Single journey distance (km)	Frequency/headway (min)	Average speed (kph)	Minimum layover time at each terminal (min)
B32	Wadebridge	Launceston	60	180	40	5
B46	Wadebridge	Camborne	70	120	40	5

Fig. 2

CORNWALL LANGUAGE SCHOOL (CLS)

CLS brings students from France and Italy to their centre in Bodmin, Cornwall for English language holiday courses.

CLS is planning to offer a programme of day excursions to places of interest for the French and Italian students while they are staying at the CLS centre in Bodmin. CLS has various requirements in relation to these excursions:

- One coach and one driver must be based at their Bodmin centre for exclusive use on the day excursions
- CLS will not pay the premium for double manning the coach
- CLS will only run excursions which provide their students with a minimum of six hours at the destination

The potential destinations are:

- Oxford
- Bournemouth
- Brecon
- Bristol

CLS also arranges for students from England to travel to Nantes, France for residential French language holiday courses.

Nantes French Language Holiday Course

Driver Itinerary

Saturday	Depart CLS centre in Bodmin for Plymouth ferry terminal Board ferry for crossing from Plymouth to Roscoff Drive Roscoff to Nantes, arriving early evening
Sunday	Morning: free Afternoon: St Nazaire excursion
Monday	Free
Tuesday	Free
Wednesday	Loire Valley excursion
Thursday	Free
Friday	Morning: free Afternoon: Pornic excursion
Saturday	Depart Nantes centre for Roscoff ferry terminal Board ferry for crossing from Roscoff to Plymouth Drive Plymouth to Bodmin, arriving early evening

Fig. 3

The ferry crossing from Plymouth to Roscoff costs £2,244 per return journey for the coach and all passengers.

Speed and Distance Information

From	To	Single journey distance (km)	Average speed (kph)
JaCo Depot	CLS centre (Bodmin)	30	60
CLS centre (Bodmin)	Oxford	340	68
CLS centre (Bodmin)	Bournemouth	240	60
CLS centre (Bodmin)	Plymouth	50	50
CLS centre (Bodmin)	Brecon	306	68
CLS centre (Bodmin)	Bristol	210	70
Roscoff	Nantes	340	85
Nantes	St Nazaire	65	65
Nantes	Pornic	50	50
Nantes	Loire Valley	130	65

Fig. 4

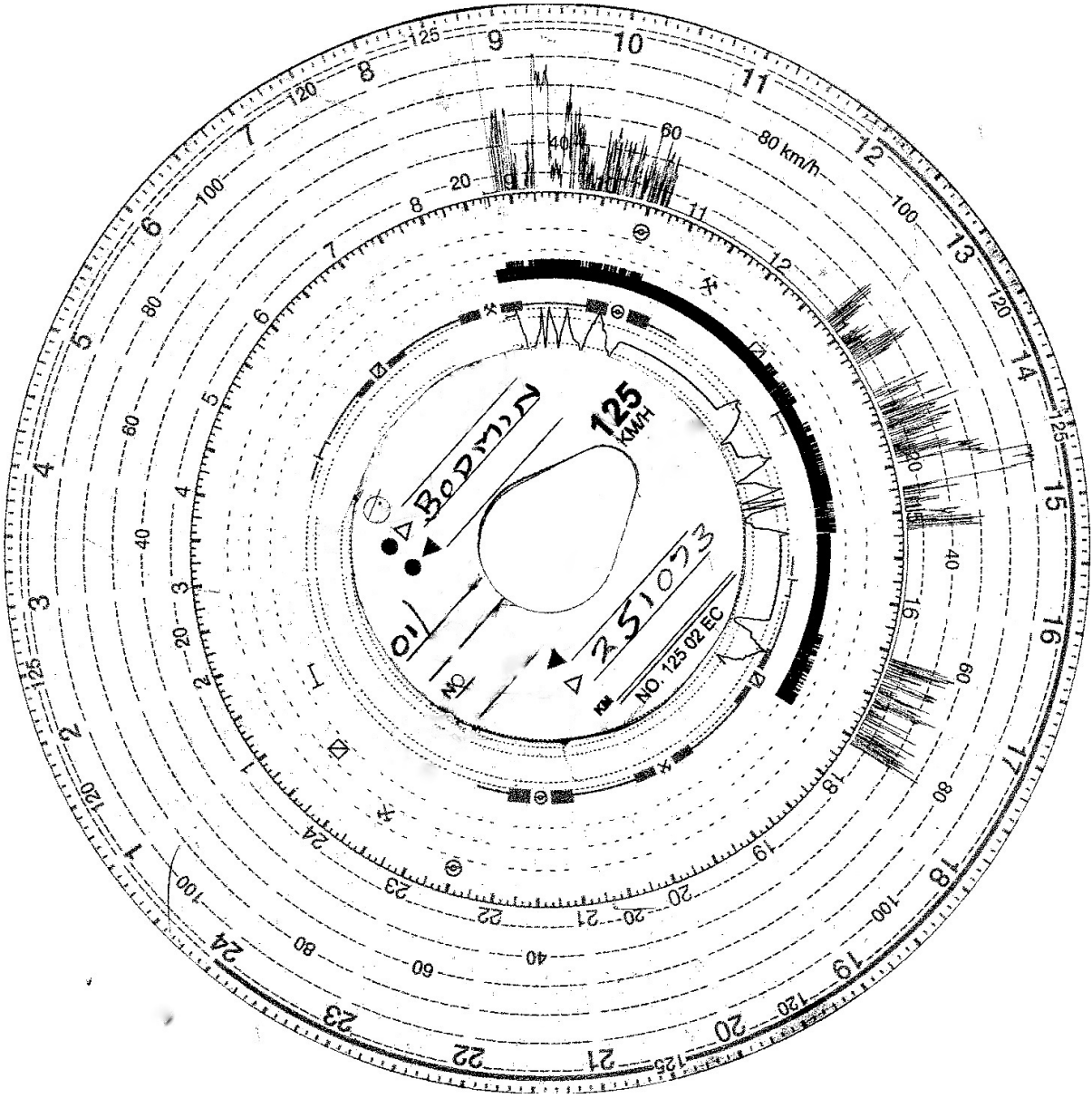


Fig. 5

THIS PAGE HAS BEEN LEFT INTENTIONALLY BLANK

THIS PAGE HAS BEEN LEFT INTENTIONALLY BLANK

Oxford Cambridge and RSA Examinations is a Company Limited by Guarantee
Registered in England
Registered Office: 1 Hills Road, Cambridge, CB1 2EU
Registered Company Number: 3484466
OCR is an exempt Charity

E102 1312