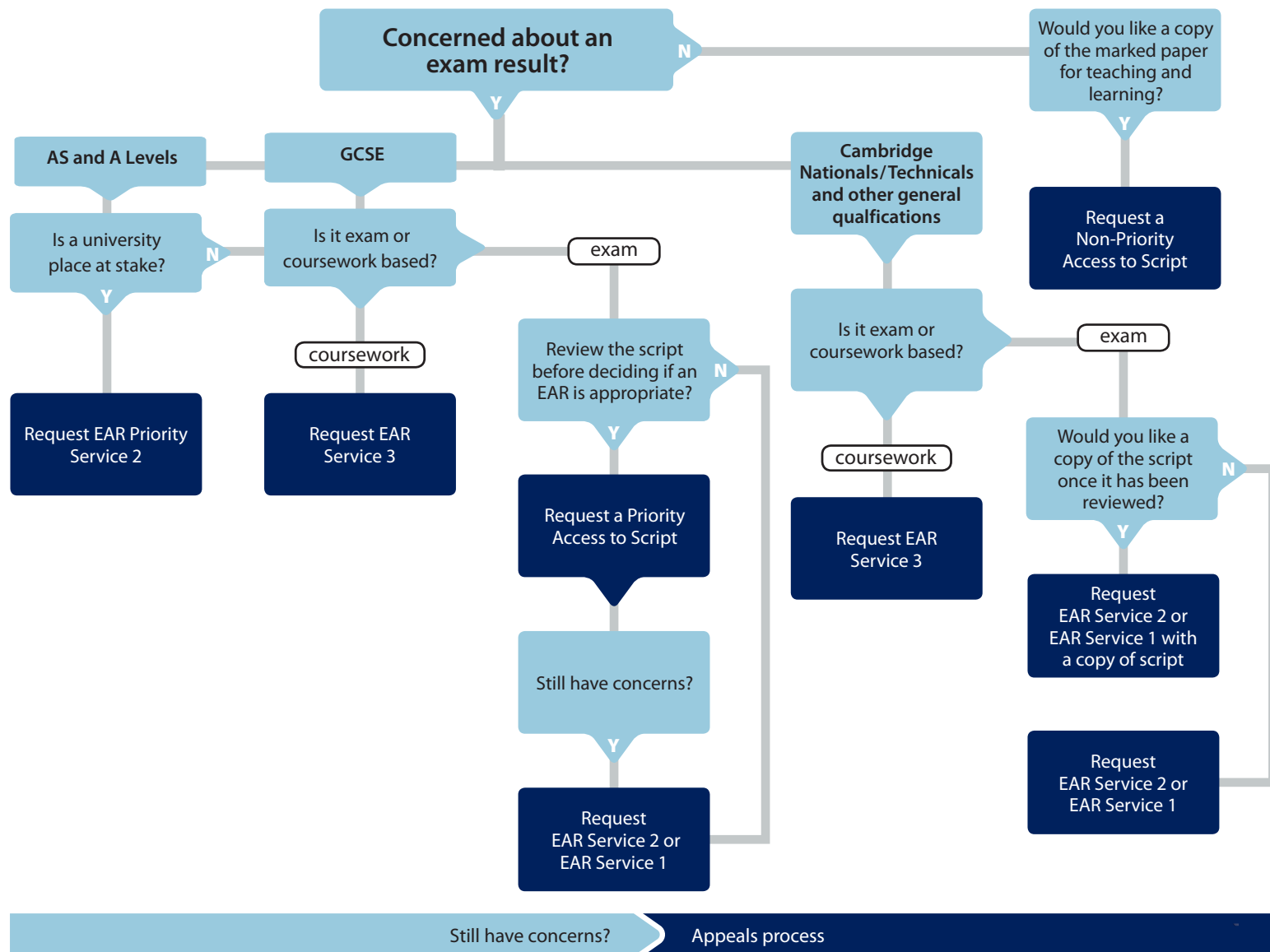


OCR's post-results services and fees: June 2017 series

There are a number of options available if you have a concern about a result.

Here's a quick guide to your main options: requesting one of our reviews of marking (*enquiries about results – EARs*) or getting hold of a copy of a marked exam paper (*access to scripts*). If you still have a concern after this, we offer an appeals service. Students should speak to a teacher or exams officer at their school or college about post-results services.



Please note: All post-results services must be requested via a school or college.

Our Services Explained

EAR Service 1 by 21/09/17
Clerical re-check (£16.40)
 of all procedures leading to the issue of a result.

EAR Service 2 by 21/09/17
Post-results mark review (£45.60)
 To ensure the agreed mark scheme has been applied correctly. If you are concerned about a group of candidates, you should submit requests for all candidates you believe are affected.

EAR Priority Service 2 by 24/08/17
Post-results mark review (£56.30)
 As for Service 2 but only available for AS and A Level qualifications in the June series.

EAR Service 2a and 2b by 21/09/17
 For specific GCSE, AS and A Level exams for which access to scripts is not available, such as speaking tests, see www.ocr.org.uk/ear2.

EAR Service 3 by 21/09/17
Post-results moderation review (£212)
 Review of the original moderation to ensure assessment criteria have been fairly, reliably and consistently applied.

Access to scripts AS/A Level by 24/08/17
GCSE by 31/08/17
Priority (£11.40)
 A copy of the original marked script to help you decide whether to request an enquiry about results
Non-Priority for teaching and learning (£11) As priority but not guaranteed to arrive before the enquiries window closes by 28/09/17

Copy of script
 A copy of the reviewed script to be delivered after the review has been completed. (£11.40)

Missing and incomplete results (MIR)
 An investigation to check if a result indicator – no result (X), partial absence (#) or pending (Q) – has been wrongly applied.

Late certification
 Request when a certification entry has not previously been made for a unitised qualification.

Still have concerns? Appeals process

www.ocr.org.uk/prs
 For further details of services, fees and charging policy, visit www.ocr.org.uk/prs

