

**Monday 17 June 2013 – Morning**

**A2 GCE HEALTH AND SOCIAL CARE**

**F921/01** Anatomy and Physiology in Practice

Candidates answer on the Question Paper.

**OCR supplied materials:**

None

**Other materials required:**

None

**Duration:** 1 hour 30 minutes



Candidate forename		Candidate surname	
-----------------------	--	----------------------	--

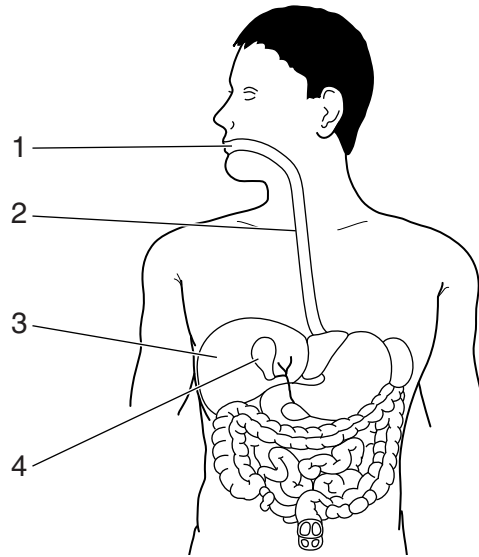
Centre number						Candidate number				
---------------	--	--	--	--	--	------------------	--	--	--	--

**INSTRUCTIONS TO CANDIDATES**

- Write your name, centre number and candidate number in the boxes above. Please write clearly and in capital letters.
- Use black ink. HB pencil may be used for graphs and diagrams only.
- Read each question carefully. Make sure you know what you have to do before starting your answer.
- Write your answer to each question in the space provided. If additional space is required, you should use the lined pages at the end of this booklet. The question number(s) must be clearly shown.
- Answer **all** the questions.
- Do **not** write in the bar codes.

**INFORMATION FOR CANDIDATES**

- The number of marks is given in brackets [ ] at the end of each question or part question.
- The total number of marks for this paper is **100**.
- You will be awarded marks for the quality of written communication where an answer requires a piece of extended writing.
- This document consists of **20** pages. Any blank pages are indicated.



**Digestive System**

(a) Name each of the structures labelled 1–4.

- 1 .....
- 2 .....
- 3 .....
- 4 .....

[4]

(b) Describe **two** functions of each part of the digestive system given below.

[8]

- Stomach .....
- .....
- .....
- .....
- .....
- .....
- .....
- .....
- .....

Pancreas .....

.....

.....

.....

.....

.....

.....

.....

.....

.....

Small Intestine .....

.....

.....

.....

.....

.....

.....

.....

.....

.....

Rectum .....

.....

.....

.....

.....

.....

.....

.....

.....

.....



2 (a) Outline **one** function of each of the following structures.

Structure	Function
Pituitary gland	..... ..... ..... ..... .....
Sensory nerve	..... ..... ..... ..... .....
Motor nerve	..... ..... ..... ..... .....
Myelin sheath	..... ..... ..... ..... .....

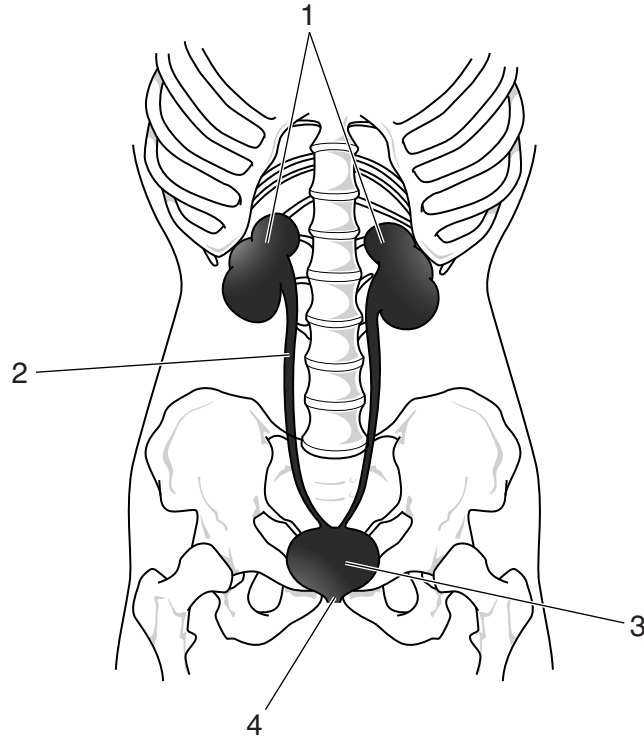
[4]



(c) Discuss how an individual could be affected by the named musculo-skeletal or neural system dysfunction.

.....  
.....  
.....  
.....  
.....  
.....  
.....  
.....  
.....  
.....  
.....  
.....  
.....  
.....  
.....  
.....  
.....  
.....  
.....  
.....  
.....  
.....  
.....  
.....  
.....  
.....  
.....  
.....  
.....  
.....  
.....  
.....  
.....  
.....  
.....  
.....  
.....  
.....  
.....  
.....  
.....  
.....  
.....  
.....  
.....  
.....  
.....  
.....  
.....  
.....  
.....  
.....  
.....

..... [8]



The Renal System

(a) Name each of the structures labelled 1–4.

- 1 .....
- 2 .....
- 3 .....
- 4 .....

[4]

(b) Describe **two** functions of each of the following structures.

[8]

- Glomerulus .....
- .....
- .....
- .....
- .....
- .....
- .....
- .....
- .....



Proximal tubule .....

.....  
.....  
.....  
.....  
.....  
.....  
.....  
.....  
.....

Loop of Henle .....

.....  
.....  
.....  
.....  
.....  
.....  
.....  
.....

Bowman's capsule .....

.....  
.....  
.....  
.....  
.....  
.....  
.....  
.....



11  
BLANK PAGE

**PLEASE DO NOT WRITE ON THIS PAGE**

**Question 4 starts on page 12.**



.....

.....

.....

.....

.....

.....

.....

.....

.....

.....



.....

.....

.....

.....

.....

.....

.....

.....

.....

.....





A series of horizontal dotted lines spanning the width of the page, providing a template for writing.

.....

.....

.....

.....

.....

.....

**END OF QUESTION PAPER**

**ADDITIONAL ANSWER SPACE**

If additional answer space is required, you should use the following lined page(s). The question number(s) must be clearly shown in the margins.

This section of the page is a large, empty area for writing answers. It consists of a vertical solid line on the left side, which serves as a margin. To the right of this line, there are 25 horizontal dotted lines spaced evenly down the page, providing a guide for writing.

**PLEASE DO NOT WRITE ON THIS PAGE**



**Copyright Information**

OCR is committed to seeking permission to reproduce all third-party content that it uses in its assessment materials. OCR has attempted to identify and contact all copyright holders whose work is used in this paper. To avoid the issue of disclosure of answer-related information to candidates, all copyright acknowledgements are reproduced in the OCR Copyright Acknowledgements Booklet. This is produced for each series of examinations and is freely available to download from our public website ([www.ocr.org.uk](http://www.ocr.org.uk)) after the live examination series.

If OCR has unwittingly failed to correctly acknowledge or clear any third-party content in this assessment material, OCR will be happy to correct its mistake at the earliest possible opportunity.

For queries or further information please contact the Copyright Team, First Floor, 9 Hills Road, Cambridge CB2 1GE.

OCR is part of the Cambridge Assessment Group; Cambridge Assessment is the brand name of University of Cambridge Local Examinations Syndicate (UCLES), which is itself a department of the University of Cambridge.