

Wednesday 19 June 2013 – Morning

A2 GCE CHEMISTRY B (SALTERS)

F334/01 Chemistry of Materials

Candidates answer on the Question Paper.

OCR supplied materials:

- *Data Sheet for Chemistry B (Salters)* (inserted)

Other materials required:

- Scientific calculator

Duration: 1 hour 30 minutes




Candidate forename		Candidate surname	
--------------------	--	-------------------	--

Centre number						Candidate number				
---------------	--	--	--	--	--	------------------	--	--	--	--

INSTRUCTIONS TO CANDIDATES

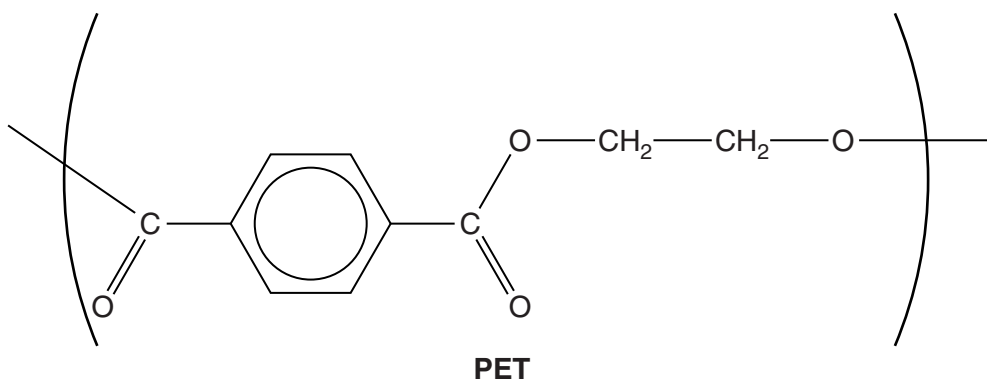
- The Insert will be found in the centre of this document.
- Write your name, centre number and candidate number in the boxes above. Please write clearly and in capital letters.
- Use black ink. HB pencil may be used for graphs and diagrams only.
- Answer **all** the questions.
- Read each question carefully. Make sure you know what you have to do before starting your answer.
- Write your answer to each question in the space provided. If additional space is required, you should use the lined page(s) at the end of this booklet. The question number(s) must be clearly shown.
- Do **not** write in the bar codes.

INFORMATION FOR CANDIDATES

- The number of marks is given in brackets [] at the end of each question or part question.
-  Where you see this icon you will be awarded marks for the quality of written communication in your answer.
This means for example you should:
 - ensure that text is legible and that spelling, punctuation and grammar are accurate so that meaning is clear;
 - organise information clearly and coherently, using specialist vocabulary when appropriate.
- You may use a scientific calculator.
- A copy of the *Data Sheet for Chemistry B (Salters)* is provided as an insert with this question paper.
- You are advised to show all the steps in any calculations.
- The total number of marks for this paper is **90**.
- This document consists of **20** pages. Any blank pages are indicated.

Answer **all** the questions.

- 1 PET is a polyester which has the repeating unit shown below.



- (a) (i) Draw a ring around an ester group on the structure above. [1]

- (ii) State the **types** of intermolecular bonds which hold polyester chains together.

.....

 [2]

- (iii) Use the formula above to draw the structural formulae of the monomers which are used to make PET.

[2]

- (iv) State the **type** of polymerisation involved in forming PET and identify the other product when PET is formed from the monomers.

.....
 [1]

(b) A student heats PET under reflux with an excess of NaOH(aq). From the mixture the student isolates a solid salt and an organic liquid.

(i) Describe what happens to the vapour when a mixture is heated under reflux and give **one** reason why reflux was used in this reaction.

.....
.....
.....
..... [2]

(ii) The student purifies the salt by recrystallisation using a suitable solvent.

Describe and explain the process of recrystallisation, including an explanation for the choice of solvent used and how impurities are removed.



In your answer you should link the removal of impurities to the relevant step of the recrystallisation process.

.....
.....
.....
.....
.....
.....
.....
.....
.....
.....
.....
.....
.....
.....
.....
.....
.....
.....
..... [6]

(c) The student uses infrared spectroscopy to identify the **two** organic products, **A** and **B**, formed by the reaction of PET with an excess of NaOH(aq) in part (b).

(i) Explain why a substance produces a spectrum showing absorption peaks when irradiated with infrared frequencies.

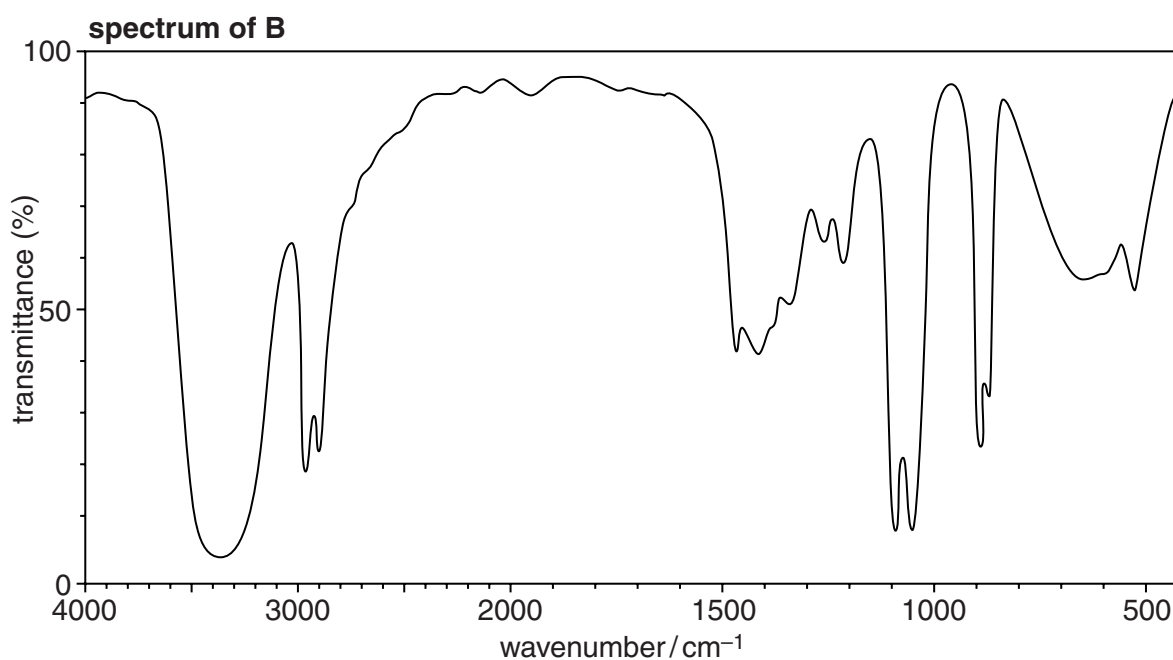
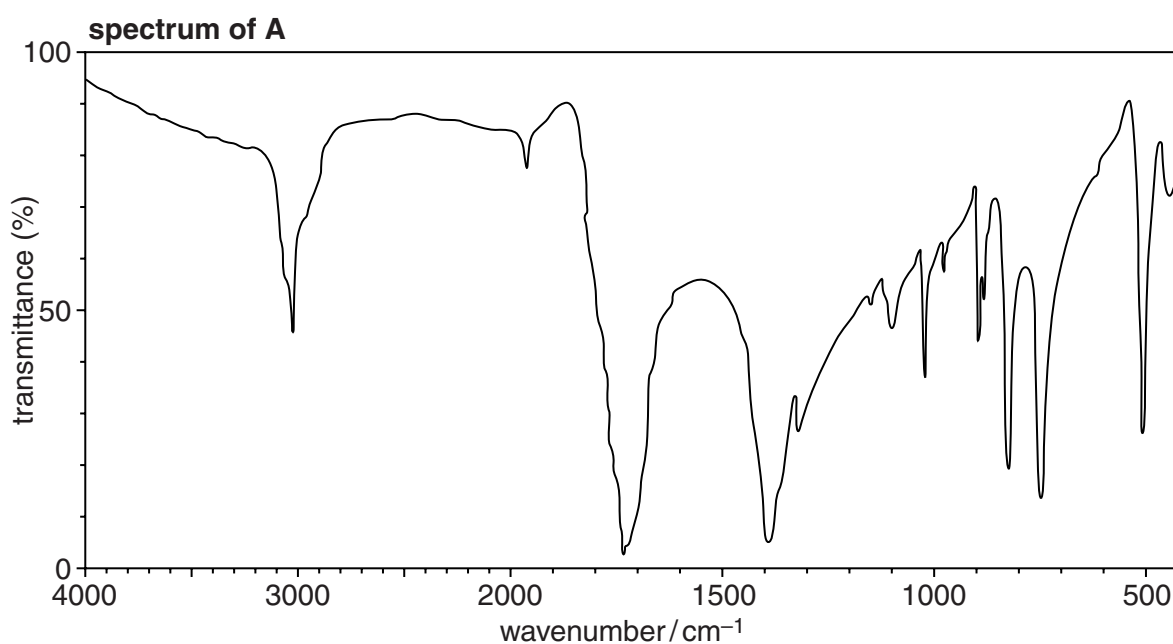
.....

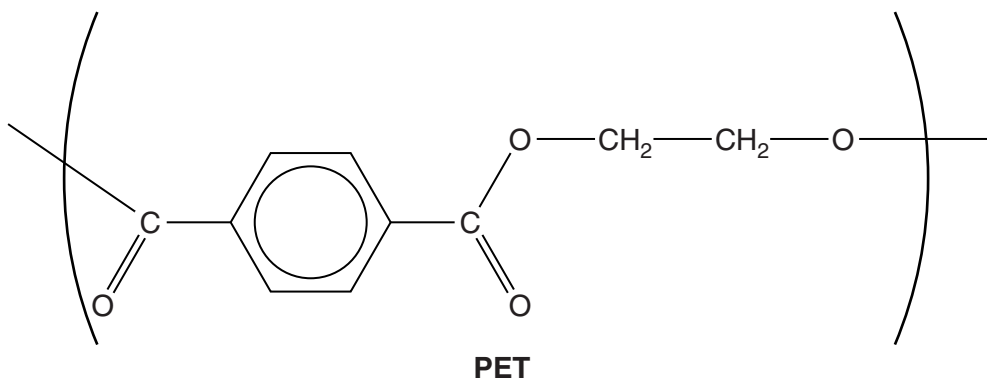
.....

.....

..... [2]

The infrared spectra of **A** and **B** are shown below.





- (ii) Use your knowledge of the reaction, together with the *Data Sheet* and the spectra to identify products **A** and **B**.

Give the structures of **A** and **B**.

Give your reasoning, stating any relevant absorption peaks and bonds involved.

structure of **A**

reasoning

.....

.....

.....

structure of **B**

reasoning

.....

.....

.....

[5]

(d) PET has a T_g of 75°C and a T_m of 260°C.

(i) Give the meaning of the term T_g .

.....

 [1]

(ii) Describe what would happen to a bottle made from PET if it was heated to 300°C in the absence of air.

.....

 [1]

(e) PBT is a similar polymer to PET. PBT is less crystalline than PET.

(i) Explain why PBT would be more flexible than PET.

.....

 [3]

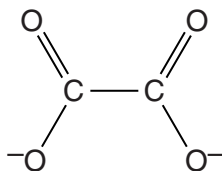
(ii) One of the monomers used to make PBT has a straight chain of carbon atoms and has the molecular formula $C_4H_{10}O_2$.

Give the systematic name of this monomer.

..... [2]

[Total: 28]

- 2 *Bar Keeper's Friend* is a powdered cleaning agent invented over 100 years ago and still in use today. It is particularly effective at removing rust stains. The active ingredients are the ethanedioate ion, shown below, and ethanedioic acid, $(\text{COOH})_2$.



A student decides to investigate how *Bar Keeper's Friend* removes rust stains. The student finds that the ethanedioate ions act as bidentate ligands which form complexes with Fe^{3+} ions.

- (a) (i) On the diagram **above** show how this bidentate ligand bonds to a Fe^{3+} ion.

On the diagram name the type of bond formed.

[3]

- (ii) The complex ion formed between the ethanedioate ligands, $\text{C}_2\text{O}_4^{2-}$, and Fe^{3+} has a charge of 3-.

Give the formula and name the shape of the complex ion.

formula:

name of shape

[2]

- (b) The student also investigates whether ethanedioic acid, $(\text{COOH})_2$, undergoes a redox reaction with Fe^{3+} ions.

Half-reaction	E^\ominus/V
$2\text{CO}_2 + 2\text{H}^+ + 2\text{e}^- \rightarrow (\text{COOH})_2$	-0.49
$\text{Fe}^{3+} + \text{e}^- \rightarrow \text{Fe}^{2+}$	+0.77

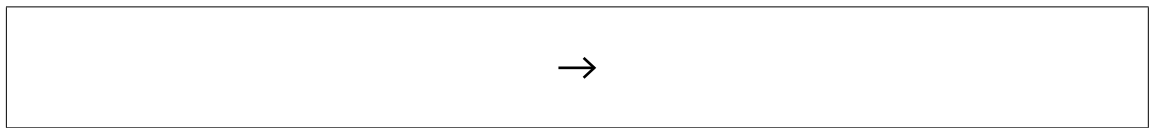
- (i) Use data from the table above to explain why the student expects $(\text{COOH})_2$ and Fe^{3+} ions to react.

.....

 [2]

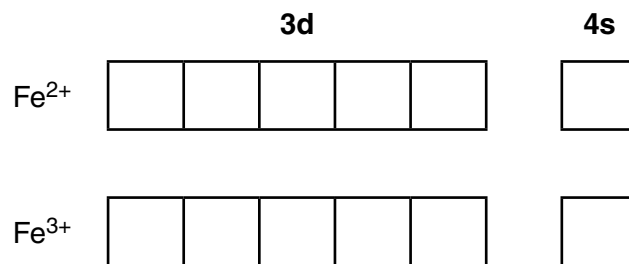
- (ii) Write an ionic equation for the reaction that the student expects will occur in solution between $(\text{COOH})_2$ and Fe^{3+} ions.

Include state symbols.



[2]

- (iii) Draw arrows in appropriate boxes to show the outer electron structures for Fe^{2+} and Fe^{3+} .



[2]

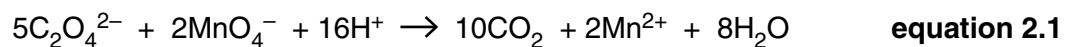
- (iv) Use your answers to (iii) to explain why Fe^{3+} ions are more stable than Fe^{2+} ions.

.....

 [1]

- (c) The concentration of an ethanedioate solution can be found by titration with a standard potassium manganate(VII) solution in acid conditions. However, the reaction is slow at room temperature and needs to be heated to about 60 °C.

The equation for the reaction is given below.



- (i) Describe how the titration would be carried out and explain why an indicator does **not** need to be added. In your answer describe how the end point can be recognised.



In your answer you should use technical terms spelled correctly.

.....

.....

.....

.....

.....

.....

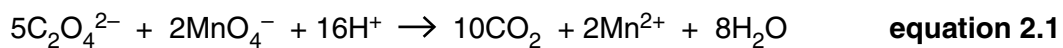
.....

.....

.....

.....

..... [6]



- (ii) A student made up a solution containing ethanedioate ions by dissolving potassium ethanedioate-1-water crystals, $\text{K}_2\text{C}_2\text{O}_4 \cdot \text{H}_2\text{O}$, in 100 cm^3 of solution.

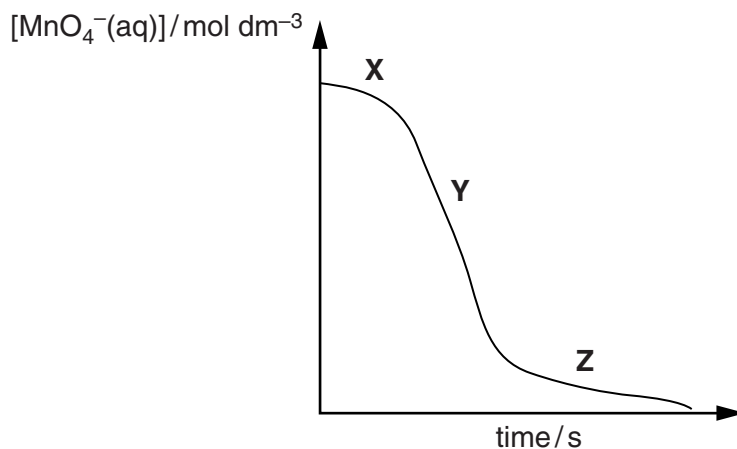
The student found that 25.0 cm^3 of this solution reacted with 18.40 cm^3 of $0.0500\text{ mol dm}^{-3}$ KMnO_4 solution.

Calculate the mass of $\text{K}_2\text{C}_2\text{O}_4 \cdot \text{H}_2\text{O}$ which was used to make up the solution.

Give your answer to an **appropriate** number of significant figures.

mass of $\text{K}_2\text{C}_2\text{O}_4 \cdot \text{H}_2\text{O} = \dots\dots\dots\text{ g [6]}$

- (d) The rate of reaction of ethanedioate ions with acidified manganate(VII) ions is fairly slow at 25 °C. As the reaction progresses, Mn²⁺ ions are formed which act as a catalyst. The student decides to measure the progress of the reaction at 25 °C and obtains the graph shown below.



- (i) Describe and explain the changes in the reaction rate between:

X and Y

.....

Y and Z

.....

[4]

- (ii) Suggest **one** method that the student could use to measure the concentration of the manganate(VII) ions, other than by a **titration**.

..... [1]

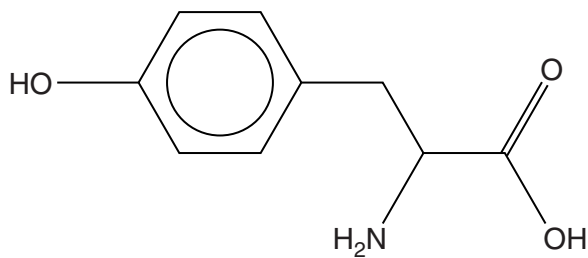
- (iii) During the progress of the reaction, give **one** observation that might be made.

.....

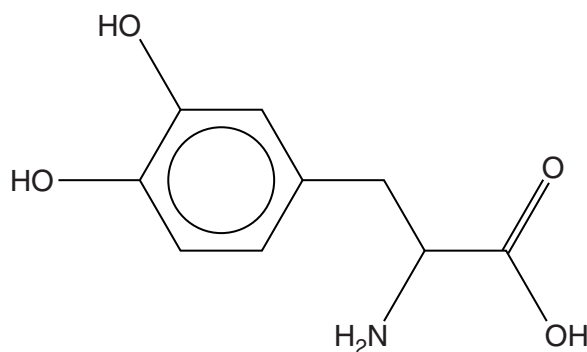
 [1]

[Total: 30]

- 3 One form of the compound DOPA is used as a drug to treat Parkinson's disease. Although found naturally, DOPA is usually synthesised from tyrosine.



tyrosine



DOPA

- (a) (i) **Name** three different functional groups found in **both** tyrosine and DOPA, other than a benzene ring.

1

2

3

[3]

- (ii) What reagent can be used to test for the OH group on a benzene ring?

reagent

observation

.....

[2]

- (b) (i) Tyrosine forms a zwitterion.

Explain the term *zwitterion* and draw the structure of the zwitterion formed by tyrosine.

.....

.....

.....

[2]

- (ii) Is an aqueous solution of tyrosine acidic, alkaline or neutral?

Give a reason for your answer.

.....
.....
..... [2]

- (iii) Draw the structure of the organic ion formed if excess NaOH is added to a solution of tyrosine in water.

[2]

- (c) There are two stereoisomers of DOPA only one of which is effective in treating Parkinson's disease.

- (i) Suggest why only one of the stereoisomers is effective in treating the disease.

.....
.....
..... [2]

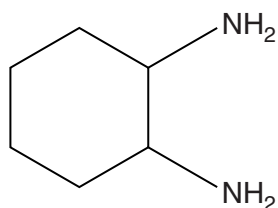
- (ii) DOPA has many adverse effects.

Suggest why it is still used to treat Parkinson's disease.

.....
..... [1]

- (d) The substance 1,2-diaminocyclohexane has stereochemical properties which are important in the synthesis of DOPA.

The diamino compound shows both optical and *cis-trans* isomerism.



1,2-diaminocyclohexane

For optical isomerism:

- circle the chiral carbons on the structure **above**,
- explain why they are chiral.

.....

.....

.....

For *cis-trans* isomerism:

- suggest the structures of the isomers,
- suggest why two different isomers exist.

.....

.....

.....

.....

.....

.....

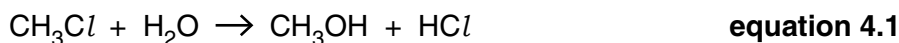
[4]

[Total: 18]

4 Chloroalkanes are considered to be hazardous materials. The most abundant chloroalkane is chloromethane.

(a) Chloromethane is hydrolysed in the atmosphere. The rate of this hydrolysis in the gas phase has been investigated in the laboratory.

The equation for the hydrolysis reaction is given below.



The rate was found by measuring the rate of formation of HCl. The results are given in the table below.

Expt.	$[\text{CH}_3\text{Cl}]$ /mol dm ⁻³	$[\text{H}_2\text{O}]$ /mol dm ⁻³	Initial rate of formation of HCl /mol dm ⁻³ s ⁻¹
1	0.250	0.250	2.838
2	0.375	0.250	4.256
3	0.250	0.125	0.709

(i) Use the data from the table to determine the orders of reaction with respect to CH_3Cl and H_2O .

order with respect to CH_3Cl :

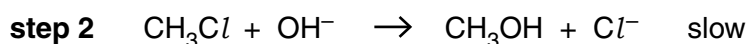
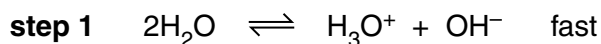
order with respect to H_2O : [2]

(ii) Give the rate equation and overall order for the reaction.

rate =

overall order = [2]

(iii) A research worker suggested that the mechanism for the reaction might be:



Explain why this mechanism is consistent with the orders of the reaction in (i).

.....

.....

.....

.....

.....

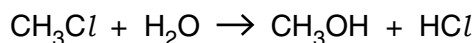
.....

.....

.....

.....

..... [2]



equation 4.1

- (b) After the CH_3Cl has been hydrolysed in the atmosphere to CH_3OH , the CH_3OH formed can be oxidised.

The hydrolysis and oxidation result in two acids being present in the atmosphere.

Name the two acids.

.....
 [2]

- (c) In the laboratory, alcohols can be oxidised to form aldehydes.

Give the reagents used and describe how the reaction is carried out to prevent further oxidation of the aldehyde.

.....

 [3]

- (d) A student found that another chloroalkane, $(\text{CH}_3)_3\text{CCl}$, was readily hydrolysed by water at 12°C . He determined that the reaction was first-order with respect to $(\text{CH}_3)_3\text{CCl}$ and zero-order with respect to water.

At a $(\text{CH}_3)_3\text{CCl}$ concentration of $1.82 \times 10^{-3} \text{ mol dm}^{-3}$, the rate of reaction was $1.56 \times 10^{-4} \text{ mol dm}^{-3} \text{ s}^{-1}$.

Calculate the rate constant for the reaction and give its units.

rate constant = units [3]

[Total: 14]

END OF QUESTION PAPER

ADDITIONAL ANSWER SPACE

If additional space is required, you should use the following lined page(s). The question number(s) must be clearly shown in the margins.

A large area of lined paper for writing answers. It features a vertical solid line on the left side, creating a margin. The rest of the page is filled with horizontal dotted lines, providing space for writing. The lines are evenly spaced and extend across the width of the page.



A series of horizontal dotted lines for writing, spanning the width of the page.



Copyright Information

OCR is committed to seeking permission to reproduce all third-party content that it uses in its assessment materials. OCR has attempted to identify and contact all copyright holders whose work is used in this paper. To avoid the issue of disclosure of answer-related information to candidates, all copyright acknowledgements are reproduced in the OCR Copyright Acknowledgements Booklet. This is produced for each series of examinations and is freely available to download from our public website (www.ocr.org.uk) after the live examination series.

If OCR has unwittingly failed to correctly acknowledge or clear any third-party content in this assessment material, OCR will be happy to correct its mistake at the earliest possible opportunity.

For queries or further information please contact the Copyright Team, First Floor, 9 Hills Road, Cambridge CB2 1GE.

OCR is part of the Cambridge Assessment Group; Cambridge Assessment is the brand name of University of Cambridge Local Examinations Syndicate (UCLES), which is itself a department of the University of Cambridge.