

**OXFORD CAMBRIDGE AND RSA EXAMINATIONS
A2 GCE
G495/01**

**PHYSICS B (ADVANCING PHYSICS)
Field and Particle Pictures**

THURSDAY 18 JUNE 2015: Morning

**DURATION: 2 hours
plus your additional time allowance**

MODIFIED ENLARGED 24pt

Candidate forename						Candidate surname				
Centre number						Candidate number				

Candidates answer on the Question Paper.

OCR SUPPLIED MATERIALS:
Data, Formulae and Relationships Booklet
(sent with general stationery)
Insert (Advance Notice for this Question
Paper) (inserted)

OTHER MATERIALS REQUIRED:
Electronic calculator
Ruler (cm/mm)

READ INSTRUCTIONS OVERLEAF

INSTRUCTIONS TO CANDIDATES

The Insert (Advance Notice) will be found inside this document.

Write your name, centre number and candidate number in the boxes on the first page. Please write clearly and in capital letters.

Use black ink. HB pencil may be used for graphs and diagrams only.

Answer ALL the questions.

Read each question carefully. Make sure you know what you have to do before starting your answer.

Write your answer to each question in the space provided. If additional space is required, you should use the additional pages at the end of this booklet. The question number(s) must be clearly shown.

INFORMATION FOR CANDIDATES

The number of marks is given in brackets [] at the end of each question or part question.

The total number of marks for this paper is 100.

You may use an electronic calculator.

You are advised to show all the steps in any calculations.

The values of standard physical constants are given in the Data, Formulae and Relationships Booklet. Any additional data required are given in the appropriate question.



Where you see this icon you will be awarded marks for the quality of written communication in your answer.

This means for example, you should:

ensure that text is legible and that spelling, punctuation and grammar are accurate so that the meaning is clear

organise information clearly and coherently, using specialist vocabulary when appropriate.

You are advised to show all the steps in any calculations.

Any blank pages are indicated.

The questions in Section C are based on the material in the Insert.

Answer ALL the questions.

SECTION A

1 Look at the list of particle names and properties.

lepton

negative

neutral

hadron

nucleon

quark

(a) Choose TWO words from the list that describe neutrinos.

_____ and _____ [1]

(b) Choose TWO words from the list that describe protons.

_____ and _____ [1]

- 2 Fig. 2.1 shows the path of an alpha particle as it passes a nucleus.

FIG. 2.1



Draw a second line on the diagram representing the path of an alpha particle with LOWER energy taking the same initial path. Give a reason why the paths are different.

[3]

- 3 Fig. 3.1 shows two metal plates. There is a potential difference between the plates.

FIG. 3.1

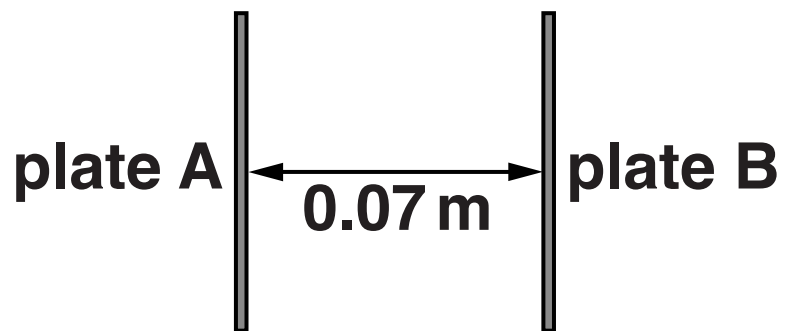
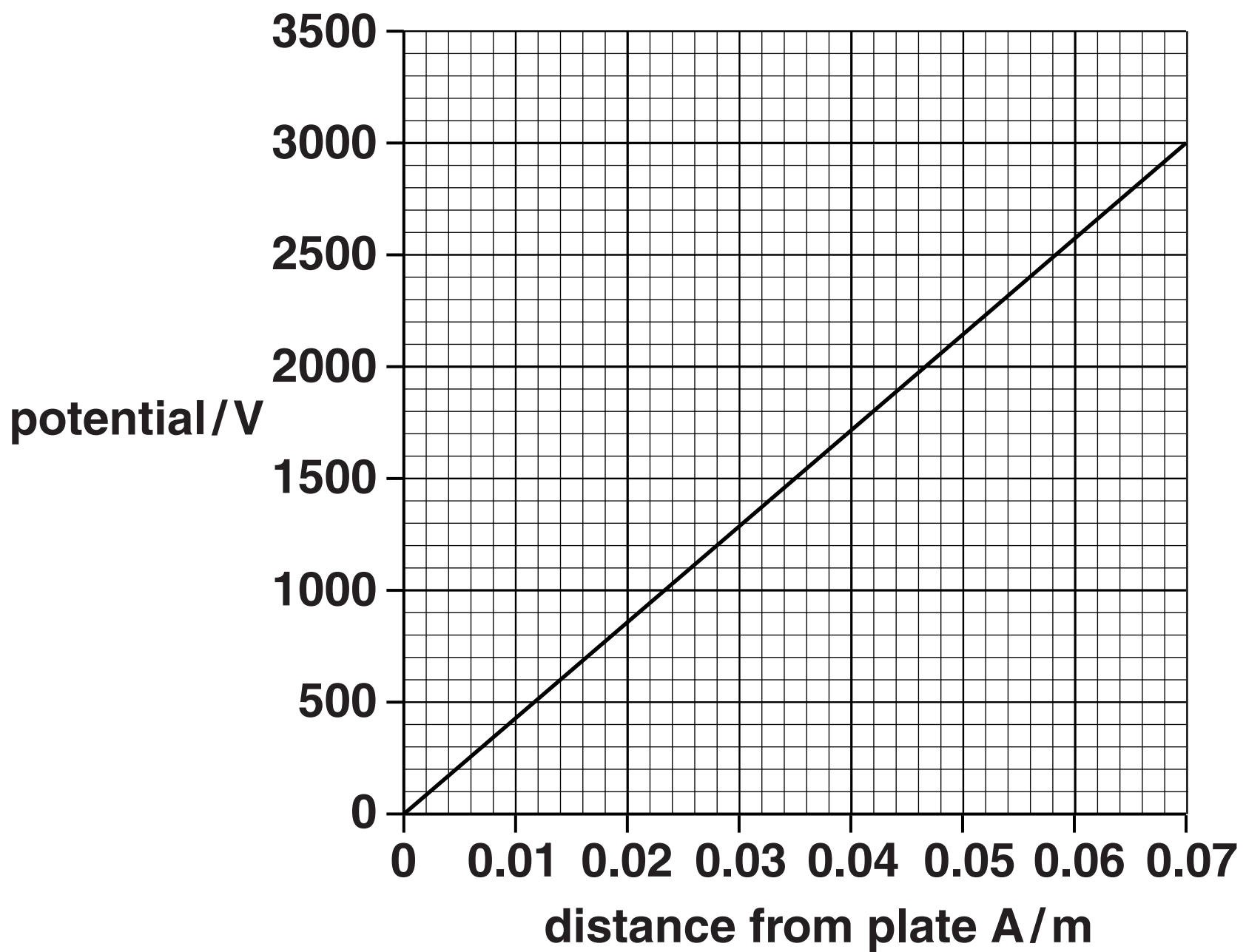


Fig. 3.2 shows the variation in potential between the plates.

FIG. 3.2



Use the graph to describe the electric field between the plates. Explain your reasoning.

You may use data from the graph for calculations in your answer.

[3]

- 4 The radium isotope $^{224}_{88}\text{Ra}$ decays into radon through alpha decay as shown:



- (a) Here is a list of quantities.

nucleon number

charge

mass

quark number

Choose the ONE quantity which is NOT conserved in this decay process.

_____ [1]

- (b) A student makes this statement about alpha decay:

“Isotopes which emit alpha radiation mainly cause serious damage to body tissue only when they are swallowed or breathed in.”

Explain why you agree or disagree with the statement, making reference to the properties of alpha particles.

[2]

- 5 An ideal transformer has 1500 turns on its primary coil and 750 turns on its secondary coil. The alternating voltage across the primary is 12V and the primary current is 0.18 A.**

Choose which pair of data correctly shows the values for the secondary coil.

- | | | |
|----------|------------|---------------|
| A | 24V | 0.09 A |
| B | 24V | 0.36 A |
| C | 6V | 0.36 A |
| D | 6V | 0.09 A |

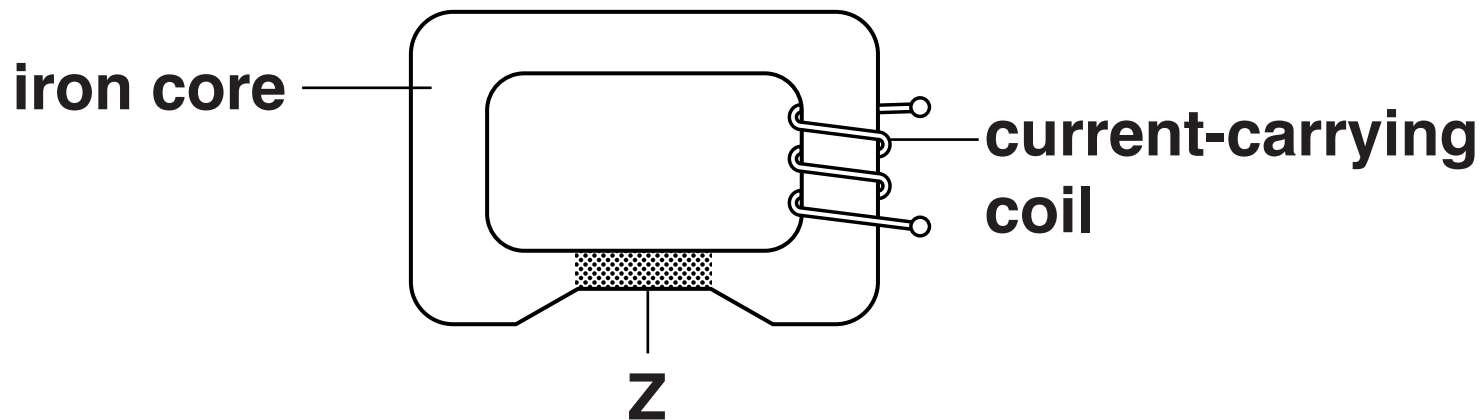
The correct pair of values for the secondary coil is

_____ .

[1]

- 6 Fig. 6.1 shows an iron core. There is a magnetic flux in the core produced by the current-carrying coil. The shaded region Z has half the cross-sectional area of the rest of the core.

FIG. 6.1



- (a) State how the values of the flux and flux density in the shaded region Z compare with those in the rest of the core.

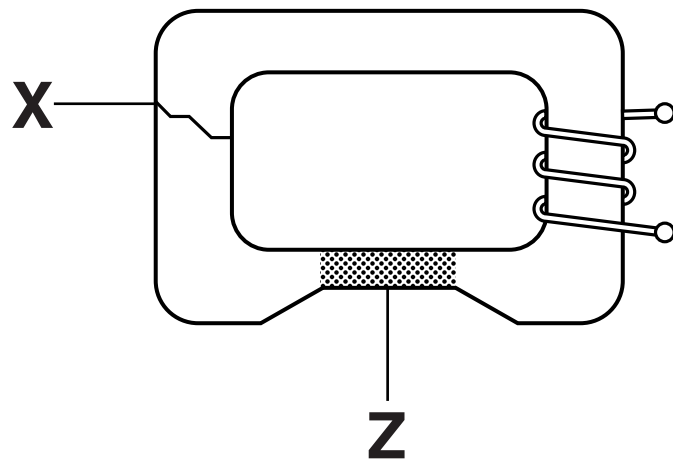
flux:

flux density:

[2]

(b) A crack forms across the core at X as shown in Fig. 6.2.

FIG. 6.2

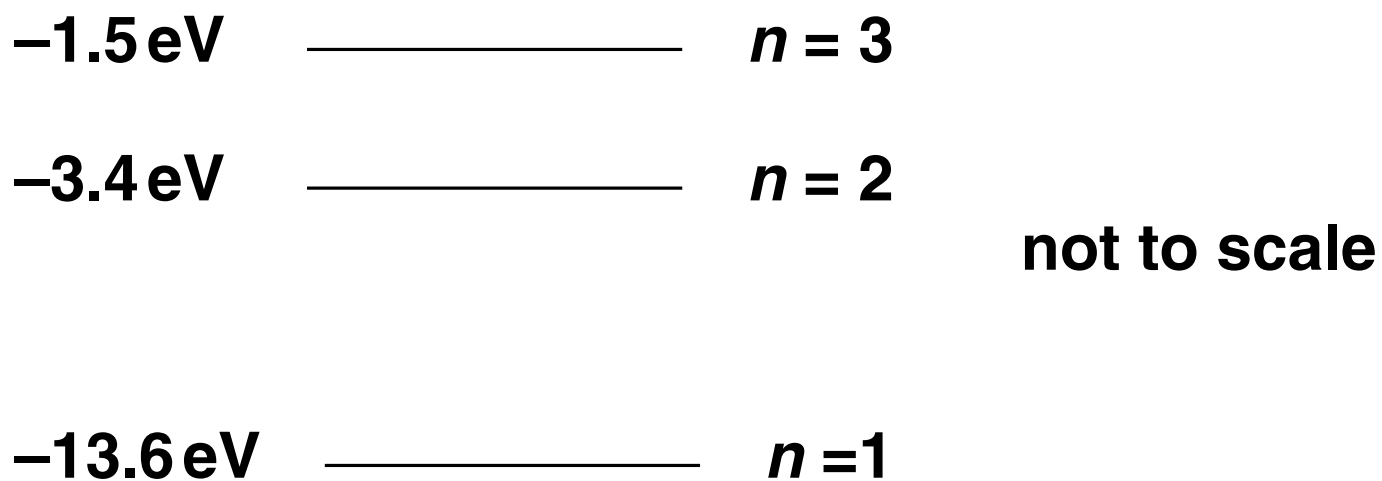


State and explain the effect the crack will have on the values of flux and flux density in region Z.

[2]

- 7 Fig. 7.1 shows the lowest three energy levels of a hydrogen atom.

FIG. 7.1



Calculate the frequency of the photon emitted when an electron falls from the $n = 3$ energy level to the $n = 2$ energy level.

The Planck constant $h = 6.6 \times 10^{-34} \text{ J s}$

Electronic charge $e = 1.6 \times 10^{-19} \text{ C}$

frequency = _____ Hz [2]

- 8 Physicists are investigating the possibility of using nuclear fusion as an energy source. One possible reaction is given below:



The mass of the products of the reaction is $3.1 \times 10^{-29} \text{ kg}$ less than the mass of the original nuclei.

- (a) Calculate the energy released in the reaction.

$$c = 3.0 \times 10^8 \text{ m s}^{-1}$$

energy = _____ J [2]

- (b) State why high temperatures are needed for this reaction to take place.

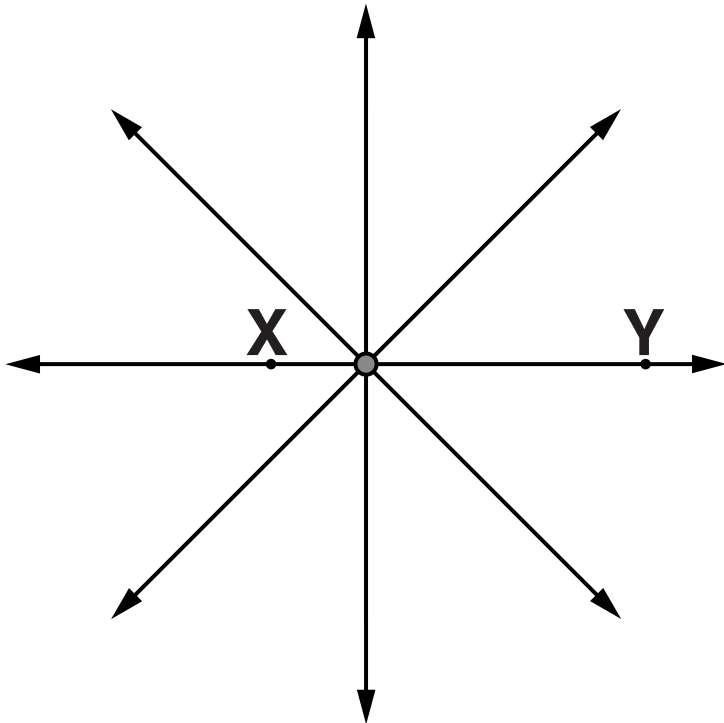
[1]

SECTION B

9 This question is about the electric field near point charges.

The field near a charge is represented by the field lines shown in Fig. 9.1.

FIG. 9.1



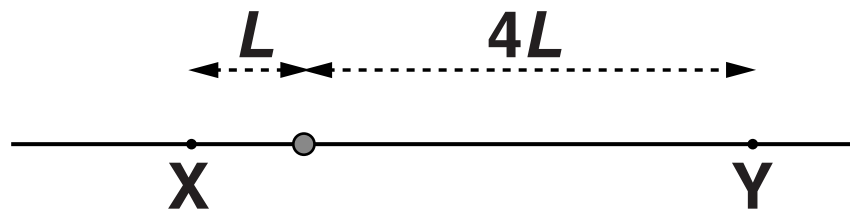
(a) (i) State the feature of the diagram in Fig. 9.1 that shows that the field is stronger at point X than at point Y.

[1]

(ii) Draw a complete equipotential line through point X. [1]

- (b) As shown in Fig. 9.2, point Y is four times the distance of point X from the charge.

FIG. 9.2



- (i) The potential at X is +1800V. Calculate the potential at Y.

potential = _____ V [1]

- (ii) The electric field strength at X is $9.7 \times 10^4 \text{ NC}^{-1}$. Calculate the field strength at Y.

field strength = _____ NC^{-1} [1]

- (c) Fig. 9.3a shows two positive charges of the same magnitude. Fig. 9.3b shows two charges also of the same magnitude but of the opposite sign.

FIG. 9.3a

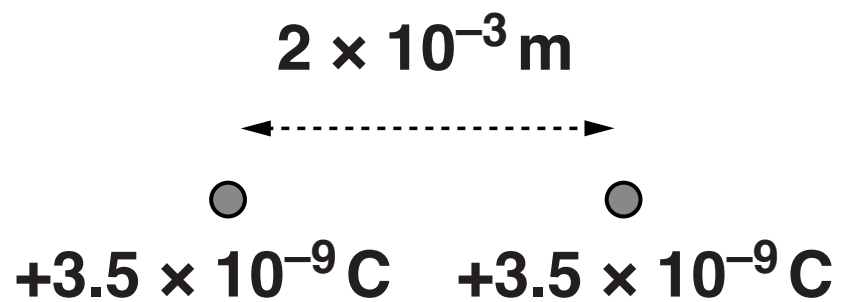
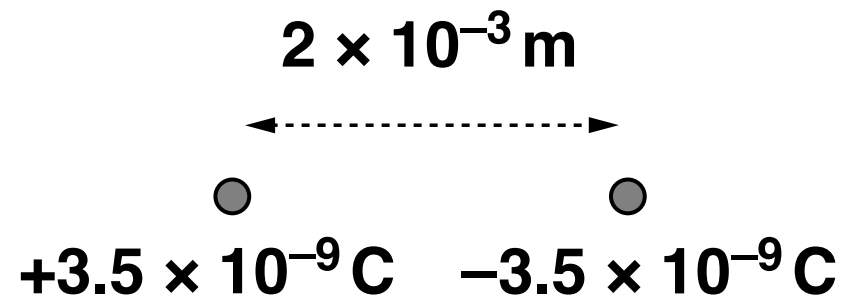


FIG. 9.3b



- (i) Explain using calculations why the field strength at the midpoint between the charges in Fig. 9.3a is zero but is $6.3 \times 10^7 \text{ N C}^{-1}$ at the midpoint between the charges in Fig. 9.3b.

electric force constant $k = 9.0 \times 10^9 \text{ N m}^2 \text{ C}^{-2}$

[3]

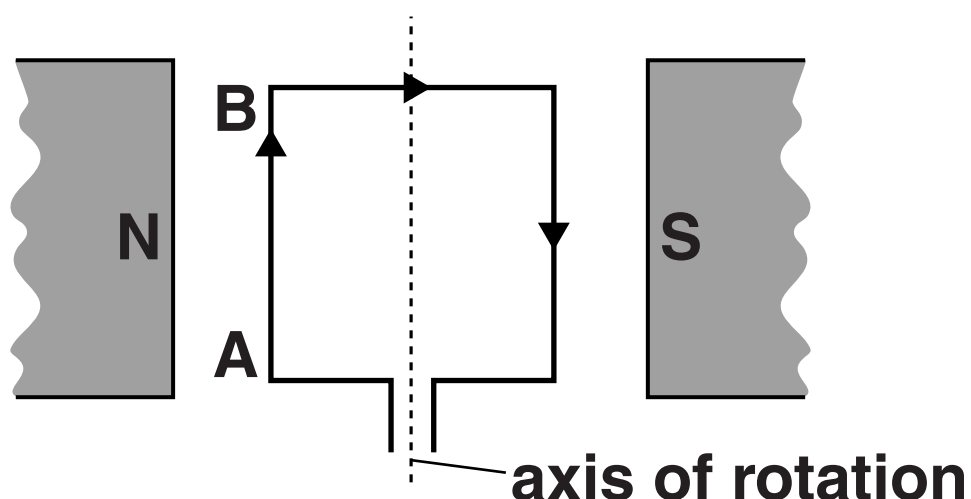
(ii) Explain why the POTENTIAL at the midpoint between the charges in Fig. 9.3b is zero.

[2]

[TOTAL: 9]

- 10 This question is about a simple d.c. motor. Fig. 10.1 shows a square current-carrying coil between two permanent magnets.

FIG. 10.1



- (a) (i) Use the data below to calculate the force on side AB of the coil.

length of AB = $6.0 \times 10^{-2} \text{ m}$

current in coil $I = 0.57 \text{ A}$

magnetic field strength $B = 90 \text{ mT}$

number of turns $N = 75$

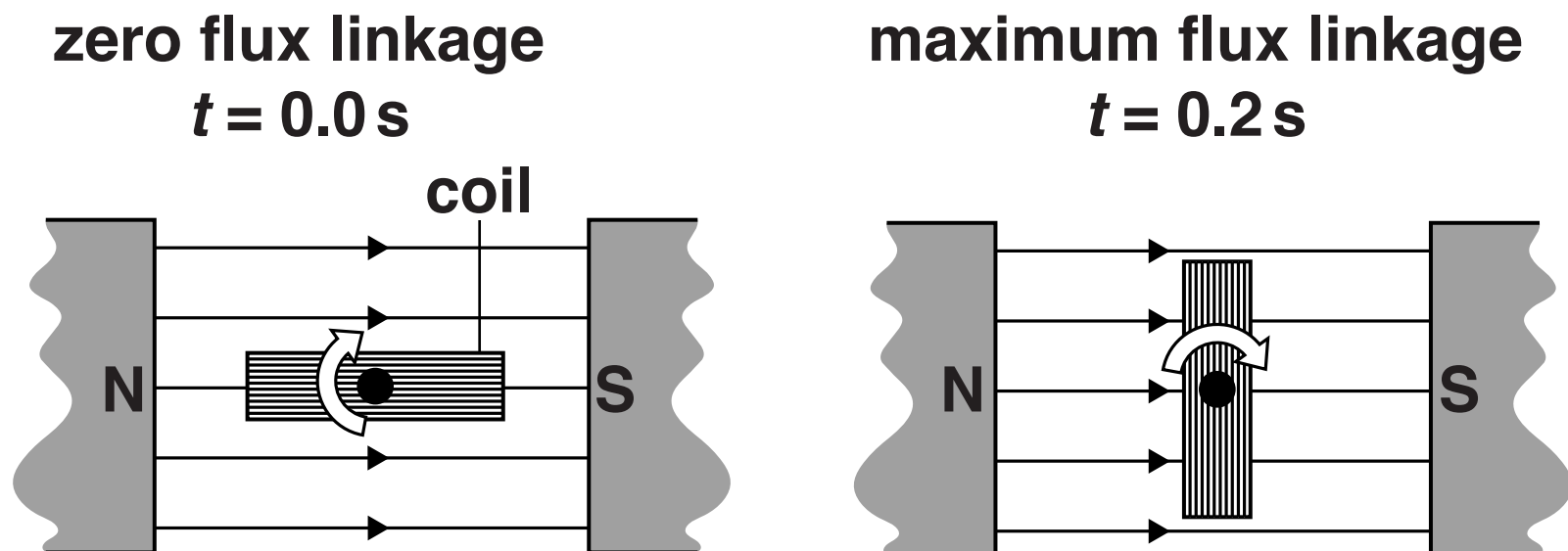
force = _____ N [1]

- (ii) The force on the coil makes the coil rotate. Suggest and explain how you expect the rate of rotation to change if all the sides of the square coil are reduced to $3.0 \times 10^{-2} \text{ m}$. The current in the coil is not changed.

[2]

- (b) An emf is generated in the coil in Fig. 10.1 when it rotates in the magnetic field. Fig. 10.2 shows the coil in positions of zero flux linkage and maximum flux linkage viewed along the axis of rotation.

FIG. 10.2



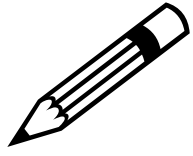
- (i) Use data from (a)(i) to calculate the maximum flux linkage of the SQUARE coil.

maximum flux linkage = _____ Wb-turns [1]

- (ii) The coil moves through one quarter turn in 0.2 s as shown in Fig. 10.2. Calculate the average emf induced during this time.

average emf induced = _____ V [1]

(iii) If the motor is jammed so that it stops turning, the current in the coil increases. Explain why.



In your answer you should use ideas about electromagnetic induction to explain why the current is higher when the motor turns more slowly.

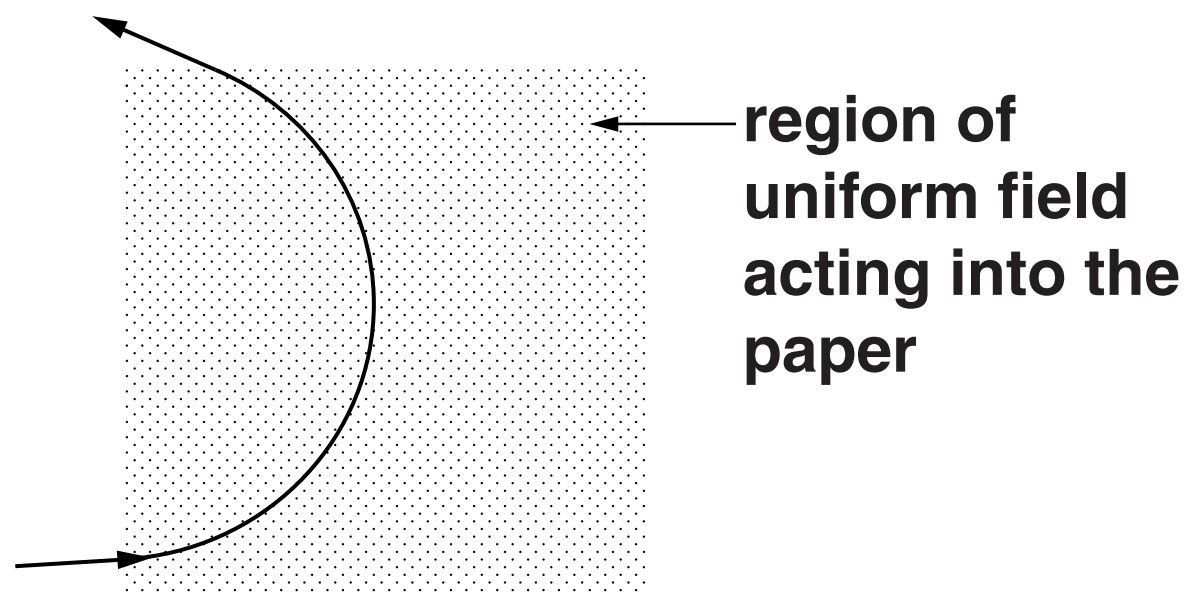
[4]

[TOTAL: 9]

11 This question is about the deflection of particles in a magnetic field.

(a) Fig. 11.1 shows the path of an alpha particle in a uniform magnetic field.

FIG. 11.1



The magnetic field produces a force on the alpha particle which travels in a circular path.

(i) State why the force on the alpha particle deflects the particle in a circular path.

[1]

- (ii) Use equations for the force on a moving charge in a magnetic field and for the force on a mass moving in a circle to show that the radius r of the path taken by a particle moving at speed v at right angles to a magnetic field of flux density B is given by

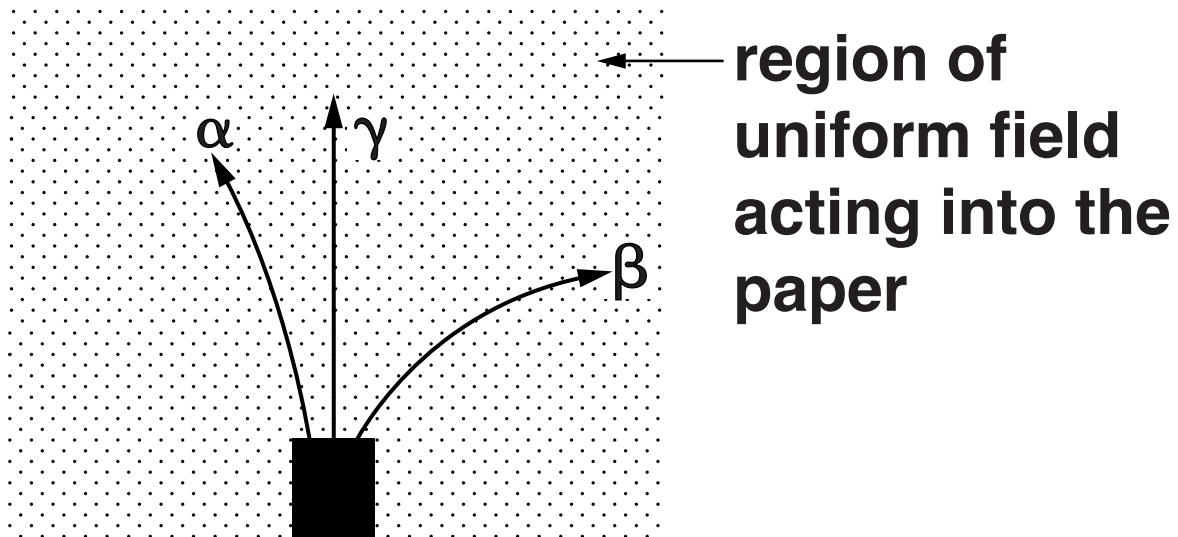
$$r = \frac{mv}{Bq}$$

where m is the mass of the particle and q is the charge on the particle.

[1]

(b) Fig. 11.2 shows a diagram that often appears in physics textbooks. It gives a misleading impression of how much alpha and beta particles are typically deflected by a magnetic field. The diagram is not to scale.

FIG. 11.2



Suggest why the diagram is correct to show that an alpha particle is deflected less than a beta particle, and that a gamma ray is not deflected.

[2]

(c) Here are some typical data about alpha and beta particles released in radioactive decays.

Particle	Mass/kg	Typical velocity on release/ m s^{-1}	Charge/C
alpha	6.6×10^{-27}	1.0×10^7	$+3.2 \times 10^{-19}$
beta	9.1×10^{-31}	2.0×10^8	-1.6×10^{-19}

Use these data and the equation given in (a)(ii) to explain why Fig. 11.2 does not accurately compare the paths of the alpha and beta particles.



In your answer you should link the results of any calculations to the paths shown on Fig.11.2.

[4]

[TOTAL:8]

12 This question is about a radioisotope used in medicine.

Iodine-131 is a beta emitter. It decays to xenon as shown.



Each xenon nucleus produced in the decay immediately emits a gamma ray photon of energy 364 keV.

(a) Describe how the decay equation shows that lepton number is conserved in this process.

[2]

(b) In a medical procedure, 1.20×10^{-13} kg of iodine-131 is absorbed into the thyroid gland in the neck.

(i) The initial activity of the iodine is stated to be about 5×10^5 Bq.

Confirm this value of the activity, showing each step of your calculation.

**mass of iodine-131 atom = 2.18×10^{-25} kg
half life of iodine-131 = 6.95×10^5 s (8 days)**

[3]

- (ii) It is said that a person treated with iodine-131 may still emit enough gamma rays to set off airport alarms twelve weeks after the treatment. Calculate the activity of the iodine sample in (i) after twelve weeks.

activity = _____ Bq [2]

- (c) Calculate the maximum dose in gray delivered to the thyroid gland from the beta emission, assuming all the iodine-131 decays in the gland. State why your answer is a maximum value.

average energy of beta particle = $2.9 \times 10^{-14} \text{ J}$
mass of thyroid gland = $1.8 \times 10^{-2} \text{ kg}$

maximum dose = _____ Gy [3]

(d) Iodine-131 has been used as a ‘tracer’. The movement of the iodine through the body is detected by gamma sensors around the body.

Explain why isotopes that emit gamma rays are required for use as tracers, and suggest why iodine-131 is now rarely used for this purpose.

[3]

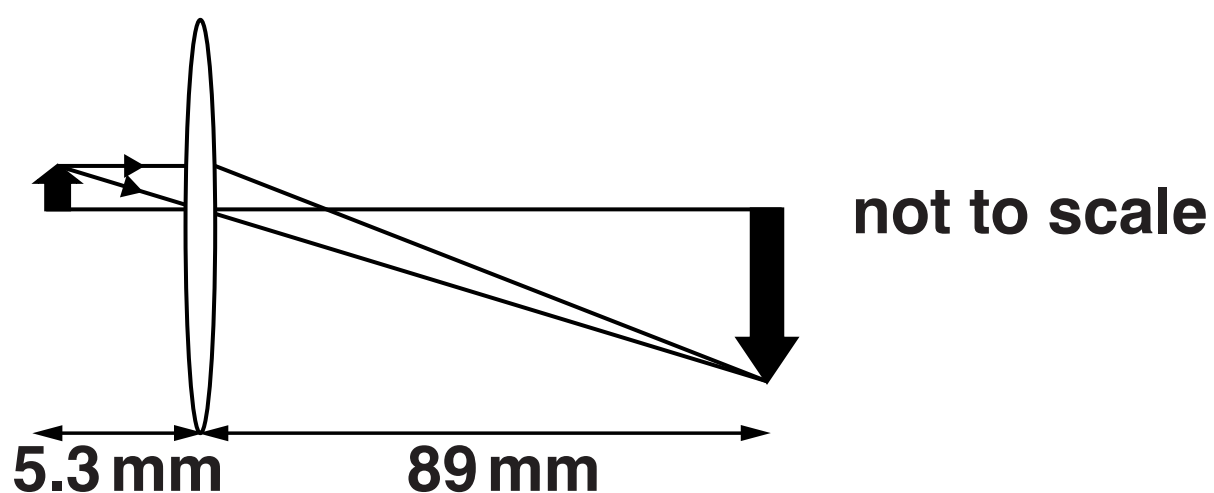
[TOTAL: 13]

SECTION C

The questions in this section are based on the insert.

- 13 Optical microscopes use combinations of glass lenses to produce magnified images (lines 16–17). The objective lens is a short focal length converging lens as shown in Fig. 13.1.

FIG. 13.1



- (a) Calculate the magnification of the image.

magnification = _____ [1]

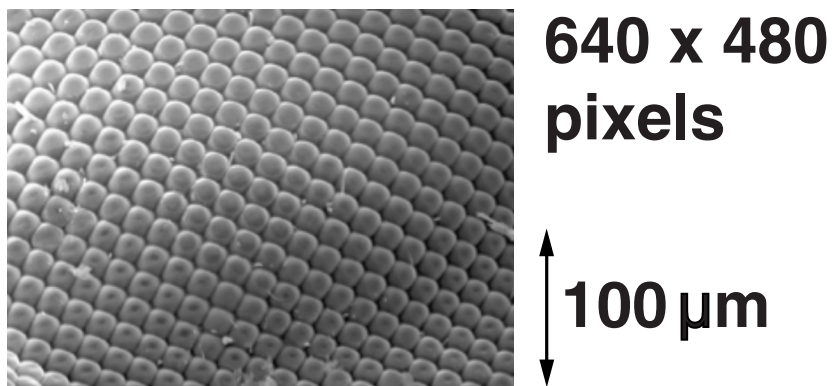
- (b) Calculate the power of the lens.

power = _____ diopetre [2]

[TOTAL: 3]

- 14 The image shown in Fig. 14.1 is that of part of a fly's eye, obtained with an electron microscope. The eye consists of a large array of lenses (lines 123–124).

FIG. 14.1



- (a) From the information given in Fig. 14.1, calculate the resolution of the image.

resolution = _____ metres per pixel [2]

- (b) The surface area of the fly's eye covered by the lenses is about $6.2 \times 10^{-6} \text{ m}^2$. Calculate the approximate number of lenses covering one eye.

approximate number of lenses covering one eye = _____ [2]

[TOTAL: 4]

15 While in operation, an electron microscope produces a continuous beam of electrons travelling along an evacuated tube (lines 81–82).

(a) The beam of electrons carries a current of 2.0×10^{-12} A.

Calculate the number of electrons leaving the electron gun each second.

electronic charge $e = 1.6 \times 10^{-19}$ C

number of electrons per second = _____ [1]

**(b) The pressure in the tube is 1.0×10^{-5} Pa.
The device is operating at 300 K (room temperature).
Calculate the number of gas particles per cubic centimetre in the chamber.**

Boltzmann constant $k = 1.4 \times 10^{-23}$ J K⁻¹

number of gas particles per cubic centimetre = _____ [3]

(c) The source of the electrons is a small coil of tungsten wire (the filament). A current is passed through the coil and electrons boil off the hot surface of the wire. The electrons receive the energy to do this from the thermal vibrations of the metal lattice. The energy, E , required to remove an electron in this way is about $7 \times 10^{-19} \text{ J}$ (just over 4 eV, line 67).

(i) The beam current I_B will depend upon the Boltzmann factor:

$$I_B \propto e^{-E/kT}$$

Explain why it is reasonable to expect the beam current to be proportional to the Boltzmann factor.

[3]

- (ii) When the filament is at a temperature of 2200 K, N electrons are emitted per second.

Use the Boltzmann factor to calculate an estimate of the temperature the wire must reach to emit $3N$ electrons per second.

$$k = 1.4 \times 10^{-23} \text{ J K}^{-1}$$

temperature _____ K [3]

[TOTAL: 10]

16 In a typical scanning electron microscope, the electrons are accelerated from rest through a potential difference of 40 kV.

(a) (i) Show that the kinetic energy gained by each electron is about $6 \times 10^{-15} \text{ J}$.

electronic charge $e = 1.6 \times 10^{-19} \text{ C}$

[1]

(ii) Calculate the momentum gained by each electron. Ignore relativistic effects.

mass of an electron $m_e = 9.1 \times 10^{-31} \text{ kg}$

momentum gained = _____ kg m s^{-1} [2]

- (b) Calculate the maximum theoretical resolution of an instrument using 40 keV electrons. Assume this resolution is given by half the de Broglie wavelength of the electrons.**

Planck constant $h = 6.6 \times 10^{-34} \text{ J s}$

resolution = _____ m [2]

- (c) When the electrons strike the sample most of their energy is converted to thermal energy (line 90). Excessive heating could damage the sample.**

Calculate the minimum number of electrons required to strike a small sample in order to raise its temperature by 1 K.

electron energy $E = 6.0 \times 10^{-15} \text{ J}$

mass of sample $m = 0.25 \times 10^{-6} \text{ kg}$

specific thermal capacity of sample $c = 3000 \text{ J kg}^{-1} \text{ K}^{-1}$

number of electrons = _____ [2]

- (d) Some of the electrons' energy is carried away as x-rays (line 91). The maximum energy of an emitted x-ray photon is equal to that of the incident electron.

Calculate the minimum wavelength of the emitted x-rays.

electron energy $E = 6.0 \times 10^{-15} \text{ J}$

Planck constant $h = 6.6 \times 10^{-34} \text{ J s}$

speed of light $c = 3.0 \times 10^8 \text{ ms}^{-1}$

wavelength = _____ m [2]

[TOTAL: 9]

17 In electron microscopes, beams of electrons are focused using circular solenoids producing strong magnetic fields (line 75), typically about 1 tesla in TEMs.

(a) Show that the number of turns required to produce this field strength in a circular solenoid of mean diameter 0.010 m which carries a current of 2.0 A is about 4000.

field strength in solenoid $B = \mu_0 \frac{IN}{d}$

where

B is magnetic field strength in tesla

μ_0 is permeability of free space = $1.3 \times 10^{-6} \text{ N A}^{-2}$

I is current in amps

N is number of turns

d is diameter of solenoid in metres

[2]

(b) Estimate the potential difference needed across this coil to produce the required field strength.

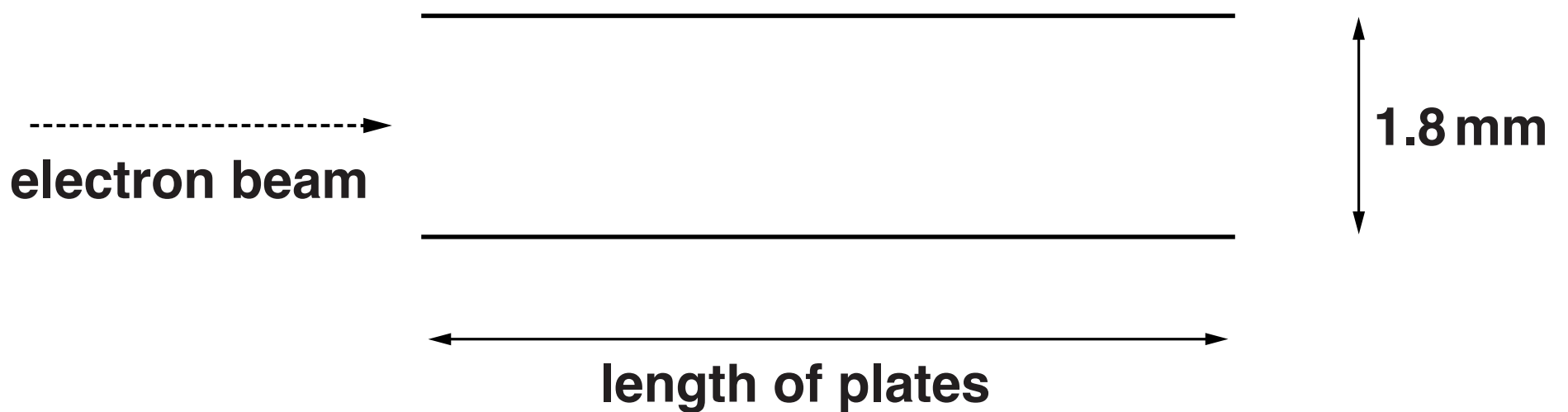
resistance per unit length of the wire used = $1.6 \Omega \text{ m}^{-1}$

potential difference = _____ V [2]

[TOTAL: 4]

- 18 In some SEM systems, sideways deflection of the beam (for scanning) can be obtained using a uniform electric field (line 114) between two parallel plates (Fig. 18.1).**

FIG. 18.1



- (a) Show that the electric field between a pair of plates 1.8 mm apart with a potential difference across them of 200 volts is more than 10^5 V m^{-1} .**

[1]

- (b) The electrons move through the field at a speed of 40% of the speed of light so relativistic effects can be ignored.

Calculate the length of plates required to produce a deflection of 5×10^{-4} m at the end of the plates.

electronic charge $e = 1.6 \times 10^{-19}$ C

electron mass $m_e = 9.1 \times 10^{-31}$ kg

length of plates = _____ m [4]

(c) Explain why the size of the deflection of an electron passing through the middle of the gap between the plates would be unchanged if it entered the gap closer to the negative plate.

[2]

[TOTAL: 7]

19 Transmission electron microscopes use electrons of high energy, at which relativistic effects ($\gamma > 1$) are significant.

Calculate the velocity of an electron accelerated through a potential difference of 200 kV, taking relativistic effects into account.

**rest energy of the electron = 0.511 MeV
speed of light $c = 3.0 \times 10^8 \text{ ms}^{-1}$**

velocity = _____ ms^{-1} [3]

[TOTAL: 3]

END OF QUESTION PAPER

ADDITIONAL ANSWER SPACE

If additional answer space is required, you should use the following lined pages. The question number(s) must be clearly shown in the margins.

[illegible]

Copyright Information

OCR is committed to seeking permission to reproduce all third-party content that it uses in its assessment materials. OCR has attempted to identify and contact all copyright holders whose work is used in this paper. To avoid the issue of disclosure of answer-related information to candidates, all copyright acknowledgements are reproduced in the OCR Copyright Acknowledgements Booklet. This is produced for each series of examinations and is freely available to download from our public website (www.ocr.org.uk) after the live examination series.

If OCR has unwittingly failed to correctly acknowledge or clear any third-party content in this assessment material, OCR will be happy to correct its mistake at the earliest possible opportunity.

For queries or further information please contact the Copyright Team, First Floor, 9 Hills Road, Cambridge CB2 1GE.

OCR is part of the Cambridge Assessment Group; Cambridge Assessment is the brand name of University of Cambridge Local Examinations Syndicate (UCLES), which is itself a department of the University of Cambridge.

