



Oxford Cambridge and RSA

Wednesday 25 May 2016 – Morning

AS GCE HEALTH AND SOCIAL CARE

F913/01 Health and Safety in Care Settings

Candidates answer on the Question Paper.

OCR supplied materials:

None

Other materials required:

None

Duration: 1 hour 30 minutes



Candidate forename		Candidate surname	
-----------------------	--	----------------------	--

Centre number						Candidate number				
---------------	--	--	--	--	--	------------------	--	--	--	--

INSTRUCTIONS TO CANDIDATES

- Write your name, centre number and candidate number in the boxes above. Please write clearly and in capital letters.
- Use black ink. HB pencil may be used for graphs and diagrams only.
- Answer **all** the questions.
- Read each question carefully. Make sure you know what you have to do before starting your answer.
- Write your answer to each question in the space provided. If additional space is required, you should use the lined page(s) at the end of this booklet. The question number(s) must be clearly shown.
- Do **not** write in the bar codes.

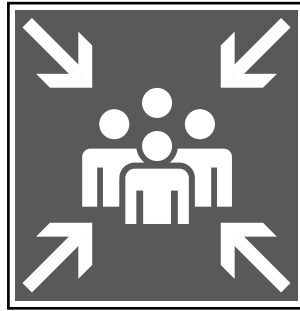
INFORMATION FOR CANDIDATES

- The number of marks is given in brackets [] at the end of each question or part question.
- The total number of marks for this paper is **100**.
- The quality of written communication will be assessed in your answers to questions marked with an asterisk (*).
- This document consists of **24** pages. Any blank pages are indicated.

1 The three signs shown below can all help to improve safety in a care setting.



A



B



C

(a) (i) Identify the three safety signs shown above.

A

.....

B

.....

C

.....

[3]

(ii)* Explain how signs like these provide different kinds of information which, if used together, can increase fire safety. [6]

.....

.....

.....

.....

.....

.....

.....

.....

.....

.....

.....

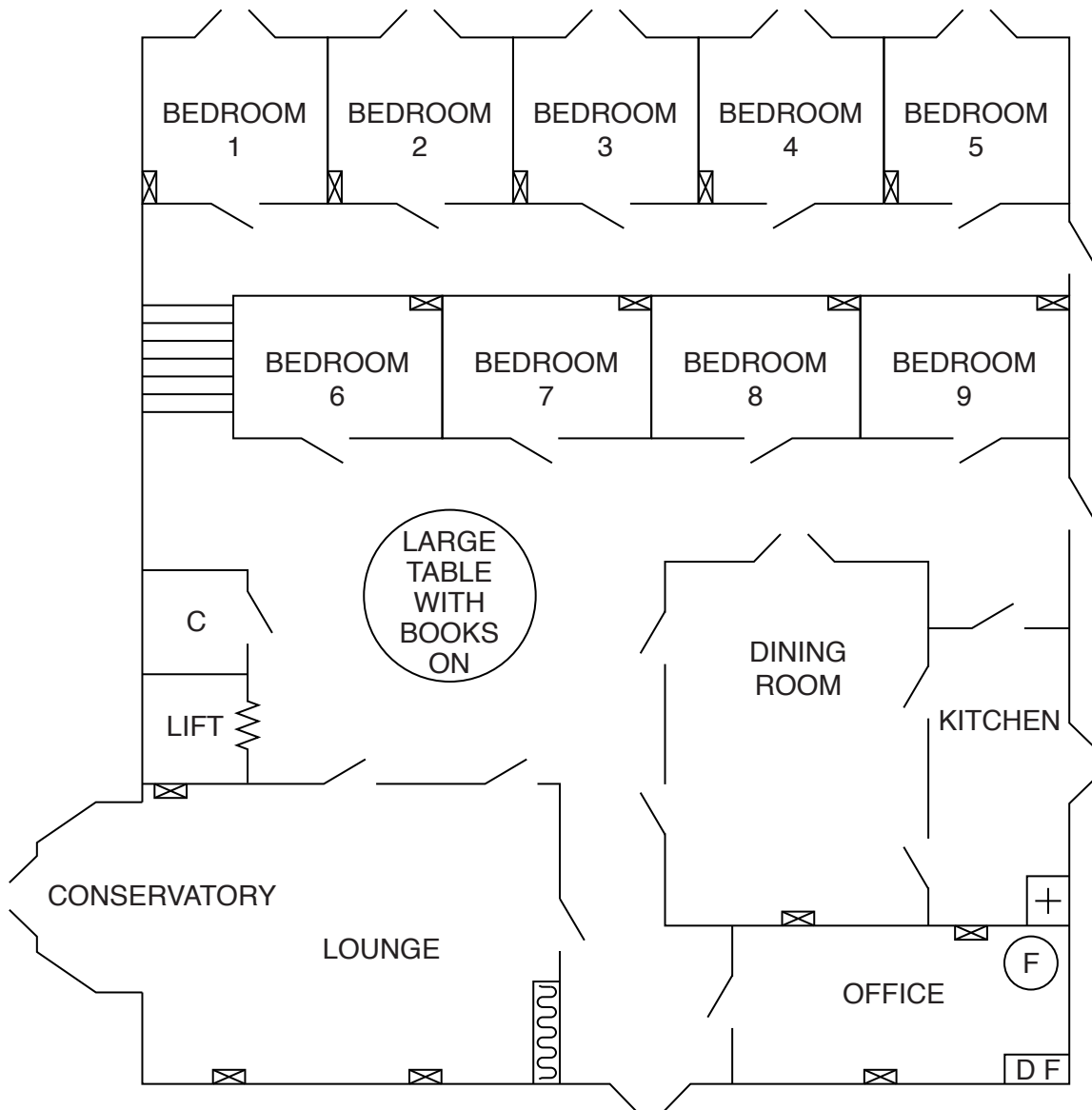
.....
.....
.....

(b)* Describe the key features and principles of the legislation which controls the use of these safety signs.


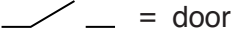
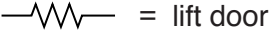



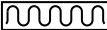

.....
.....
.....
.....
.....
.....
.....
.....
.....
.....
.....
.....
.....
.....
.....
.....
.....
.....
.....
.....
.....
.....

..... **[6]**

PLAN OF RESIDENTIAL HOME



MAIN ENTRANCE

- | | |
|---|--|
|  = defibrillator |  = door |
| C = cleaner's cupboard |  = lift door |
|  = fire extinguisher |  = steps |
|  = first-aid box |  = bookcase |
|  = electrical socket | |

2* Carry out the first three stages of a risk assessment for the residential home based on the features shown on the plan on the opposite page. [15]

.....

.....

.....

.....

.....

.....

.....

.....

.....

.....

.....

.....

.....

.....

.....

.....

.....

.....

.....

.....

.....

.....

.....

.....

.....

.....

.....

.....

.....

.....

.....

.....

.....

.....

.....

.....

.....

.....

.....

.....

3 (a) Identify **two** pieces of Personal Protective Equipment (PPE). Explain how **each** item can be used to protect practitioners from infection.

Item 1

.....

.....

.....

.....

.....

.....

Item 2

.....

.....

.....

.....

.....

[6]

ADDITIONAL ANSWER SPACE

If additional space is required, you should use the following lined page(s). The question number(s) must be clearly shown in the margin(s).

A large area of lined paper for writing. It features a vertical solid line on the left side, creating a margin. The rest of the page is filled with horizontal dotted lines, providing space for writing answers.

A large grid of dotted lines for handwriting practice. The grid consists of 28 horizontal rows of dotted lines. A solid vertical line runs down the left side of the page, creating a margin. The rest of the page is filled with dotted lines, providing a guide for letter height and placement.

A large rectangular area with a vertical solid line on the left side and horizontal dotted lines across the rest of the page, providing a grid for writing answers.



Copyright Information

OCR is committed to seeking permission to reproduce all third-party content that it uses in its assessment materials. OCR has attempted to identify and contact all copyright holders whose work is used in this paper. To avoid the issue of disclosure of answer-related information to candidates, all copyright acknowledgements are reproduced in the OCR Copyright Acknowledgements Booklet. This is produced for each series of examinations and is freely available to download from our public website (www.ocr.org.uk) after the live examination series.

If OCR has unwittingly failed to correctly acknowledge or clear any third-party content in this assessment material, OCR will be happy to correct its mistake at the earliest possible opportunity.

For queries or further information please contact the Copyright Team, First Floor, 9 Hills Road, Cambridge CB2 1GE.

OCR is part of the Cambridge Assessment Group; Cambridge Assessment is the brand name of University of Cambridge Local Examinations Syndicate (UCLES), which is itself a department of the University of Cambridge.