

# OCR

Oxford Cambridge and RSA

## Tuesday 21 June 2016 – Morning

### A2 GCE HEALTH AND SOCIAL CARE

#### F921/01 Anatomy and Physiology in Practice

Candidates answer on the Question Paper.

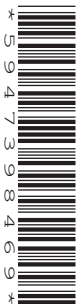
**OCR supplied materials:**

None

**Other materials required:**

None

**Duration:** 1 hour 30 minutes



Candidate forename		Candidate surname	
-----------------------	--	----------------------	--

Centre number						Candidate number				
---------------	--	--	--	--	--	------------------	--	--	--	--

#### INSTRUCTIONS TO CANDIDATES

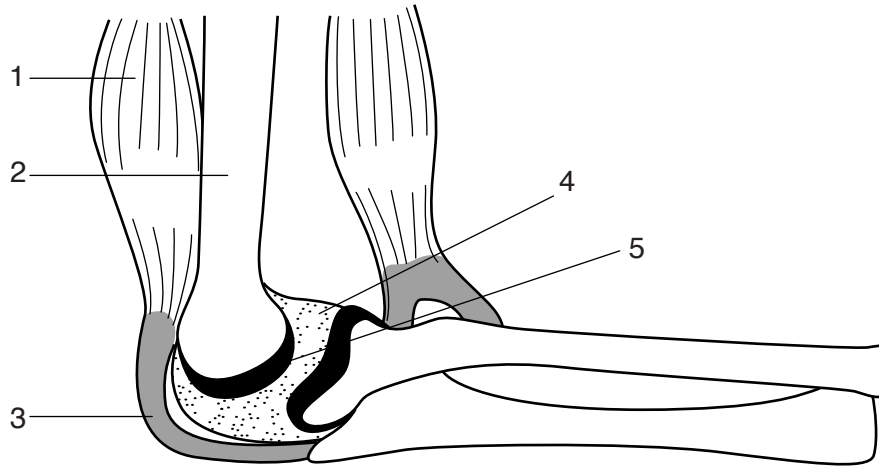
- Write your name, centre number and candidate number in the boxes above. Please write clearly and in capital letters.
- Use black ink. HB pencil may be used for graphs and diagrams only.
- Read each question carefully. Make sure you know what you have to do before starting your answer.
- Write your answer to each question in the space provided. If additional space is required, you should use the lined page(s) at the end of this booklet. The question number(s) must be clearly shown.
- Answer **all** the questions.
- Do **not** write in the bar codes.

#### INFORMATION FOR CANDIDATES

- The number of marks is given in brackets [ ] at the end of each question or part question.
- The total number of marks for this paper is **100**.
- The quality of written communication will be taken into account in marking your answer to questions marked with an asterisk (\*).
- This document consists of **16** pages. Any blank pages are indicated.

1

2



**Fig. 1 Diagram of elbow joint**

**(a)** Identify the parts indicated in the diagram of a human elbow.

- 1 .....
- 2 .....
- 3 .....
- 4 .....
- 5 ..... [5]

**(b) (i)** Name a dysfunction of either the musculo-skeletal or neural systems.

..... [1]

**(ii)** Identify a structure from Fig. 1 that would be primarily affected by the **named** dysfunction.

..... [1]











(c) Describe **four** functions of the uterus in the development and birth of a baby.

1 .....

.....

.....

2 .....

.....

.....

3 .....

.....

.....

4 .....

.....

.....

[4]





4 (a) Explain one function for each of the following components of a kidney tubule or nephron.

glomerulus .....

.....  
.....  
.....

Bowman's capsule .....

.....  
.....  
.....

proximal tubule .....

.....  
.....  
.....

loop of Henle.....

.....  
.....  
.....

collecting duct.....

.....  
.....  
.....

[10]





A series of 25 horizontal dotted lines spanning the width of the page, providing a template for writing.



**ADDITIONAL ANSWER SPACE**

If additional space is required, you should use the following lined page(s). The question number(s) must be clearly shown in the margin(s).

A large area of lined paper for writing. It features a vertical solid line on the left side, creating a margin. The rest of the page is filled with horizontal dotted lines, providing space for writing answers.

A large area of the page is reserved for writing, featuring a vertical solid line on the left side and horizontal dotted lines extending across the page.



**Copyright Information**

OCR is committed to seeking permission to reproduce all third-party content that it uses in its assessment materials. OCR has attempted to identify and contact all copyright holders whose work is used in this paper. To avoid the issue of disclosure of answer-related information to candidates, all copyright acknowledgements are reproduced in the OCR Copyright Acknowledgements Booklet. This is produced for each series of examinations and is freely available to download from our public website ([www.ocr.org.uk](http://www.ocr.org.uk)) after the live examination series.

If OCR has unwittingly failed to correctly acknowledge or clear any third-party content in this assessment material, OCR will be happy to correct its mistake at the earliest possible opportunity.

For queries or further information please contact the Copyright Team, First Floor, 9 Hills Road, Cambridge CB2 1GE.

OCR is part of the Cambridge Assessment Group; Cambridge Assessment is the brand name of University of Cambridge Local Examinations Syndicate (UCLES), which is itself a department of the University of Cambridge.