

## ERRATUM NOTICE

**ADVANCED SUBSIDIARY GCE**

**CHEMISTRY B (SALTERS)**

**F332/TEST**

Chemistry of Natural Resources

**Monday 7 June 2010**

**Morning**

### **FOR THE ATTENTION OF THE EXAMINATIONS OFFICER**

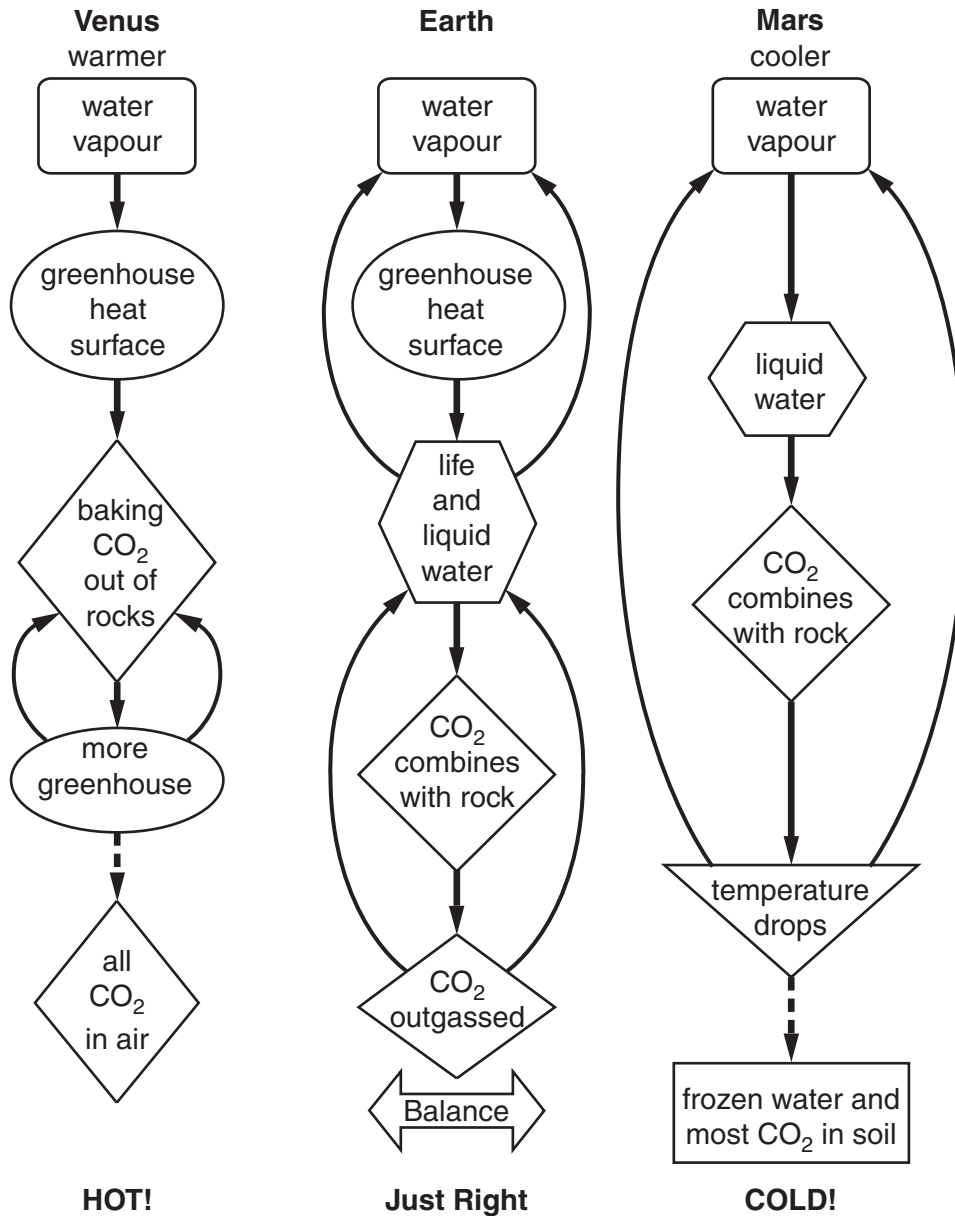
#### **Instructions to Invigilators**

Before the start of the examination:

- please hand out a copy of this erratum notice to each candidate,
- read out to candidates the following notice (please read out this notice **twice** to ensure understanding):

**There is an error in the diagram, Fig. 5, shown on page 5 of the Advance Notice article which is inserted inside the question paper. Please ignore the diagram shown in the original Advance Notice article and instead refer to the diagram shown on page 2 of the erratum notice handed out to you.**

Any enquiry about this notice should be referred to the Customer Contact Centre on 01223 553 998 or [general.qualifications@ocr.org.uk](mailto:general.qualifications@ocr.org.uk)



Venus has a runaway greenhouse effect and no water left. Earth has life and liquid water keeping temperature balanced and most of its CO<sub>2</sub> in the rocks. Mars has a runaway refrigerator with water frozen in permafrost layer and most of its CO<sub>2</sub> in the rocks or frozen on the surface.

**Fig. 5** Comparing the atmospheres of Venus, Earth and Mars

**Copyright Information**

OCR is committed to seeking permission to reproduce all third-party content that it uses in its assessment materials. OCR has attempted to identify and contact all copyright holders whose work is used in this paper. To avoid the issue of disclosure of answer-related information to candidates, all copyright acknowledgements are reproduced in the OCR Copyright Acknowledgements Booklet. This is produced for each series of examinations, is given to all schools that receive assessment material and is freely available to download from our public website ([www.ocr.org.uk](http://www.ocr.org.uk)) after the live examination series.

If OCR has unwittingly failed to correctly acknowledge or clear any third-party content in this assessment material, OCR will be happy to correct its mistake at the earliest possible opportunity.

For queries or further information please contact the Copyright Team, First Floor, 9 Hills Road, Cambridge CB2 1GE.

OCR is part of the Cambridge Assessment Group; Cambridge Assessment is the brand name of University of Cambridge Local Examinations Syndicate (UCLES), which is itself a department of the University of Cambridge.