



**ADVANCED GCE
HEALTH AND SOCIAL CARE**

F921

Unit 12: Anatomy and Physiology in Practice

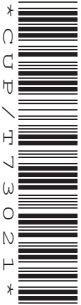
**Friday 12 June 2009
Afternoon**

Duration: 1 hour 30 minutes

Candidates answer on the question paper

OCR Supplied Materials:
None

Other Materials Required:
None



Candidate Forename		Candidate Surname	
--------------------	--	-------------------	--

Centre Number						Candidate Number				
---------------	--	--	--	--	--	------------------	--	--	--	--

INSTRUCTIONS TO CANDIDATES

- Write your name clearly in capital letters, your Centre Number and Candidate Number in the boxes above.
- Use black ink. Pencil may be used for graphs and diagrams only.
- Read each question carefully and make sure that you know what you have to do before starting your answer.
- Answer **all** the questions.
- Do **not** write in the bar codes.
- Write your answer to each question in the space provided, however additional paper may be used if necessary.

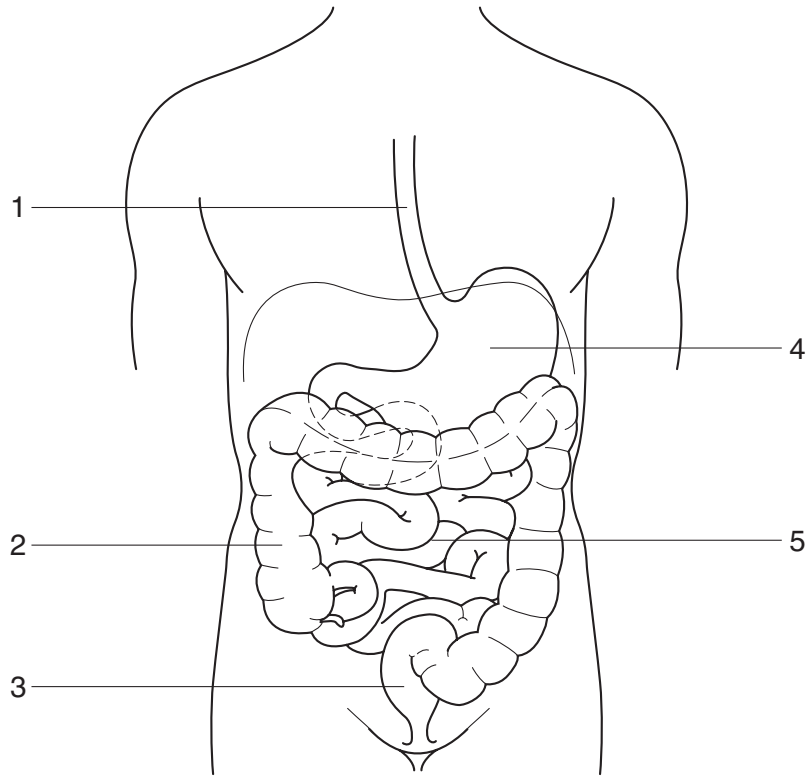
INFORMATION FOR CANDIDATES

- The number of marks is given in brackets [] at the end of each question or part question.
- The total number of marks for this paper is **100**.
- You will be awarded marks for the quality of written communication where an answer requires a piece of extended writing.
- This document consists of **16** pages. Any blank pages are indicated.

Examiner's Use Only:			
1			
2			
3			
4			
5			
Total			

1

2

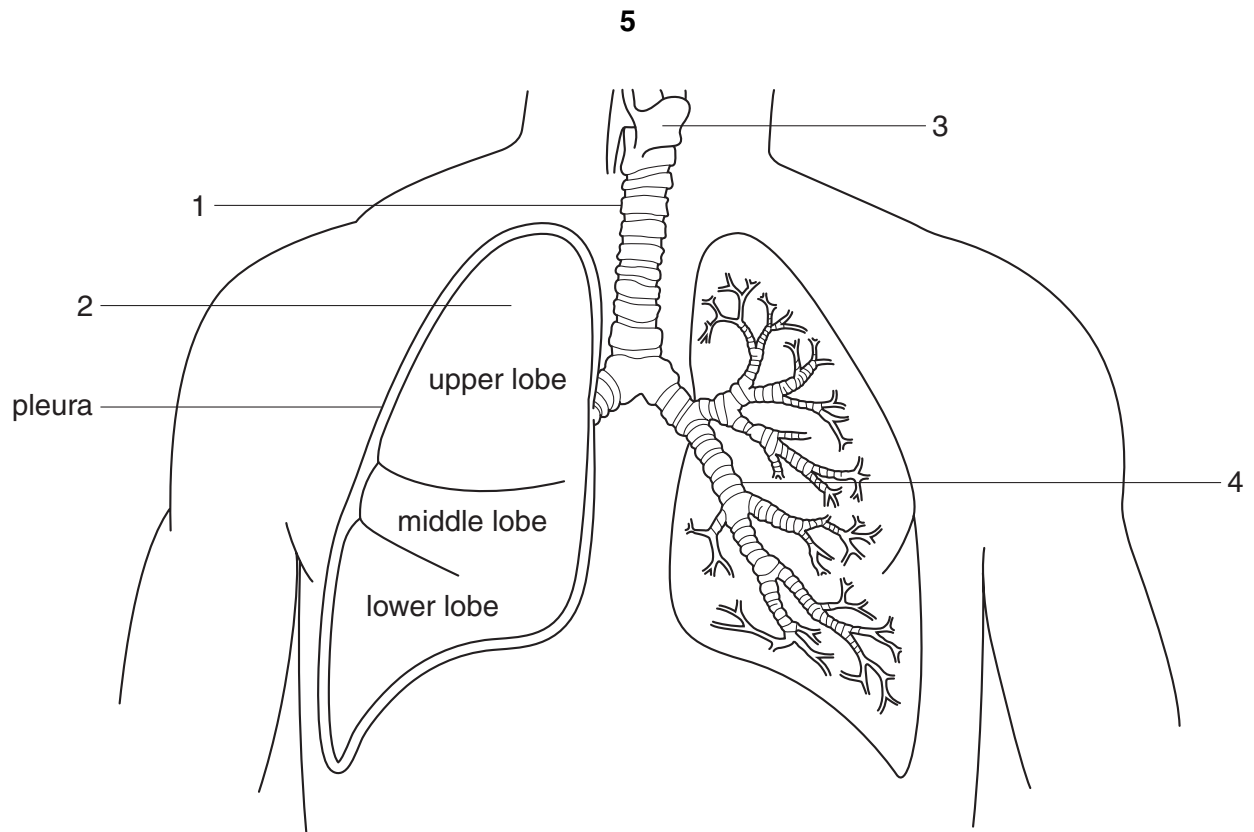


Digestive System

(a) Identify each of the structures labelled 1 – 5 in the diagram.

- 1
- 2
- 3
- 4
- 5 **[5]**

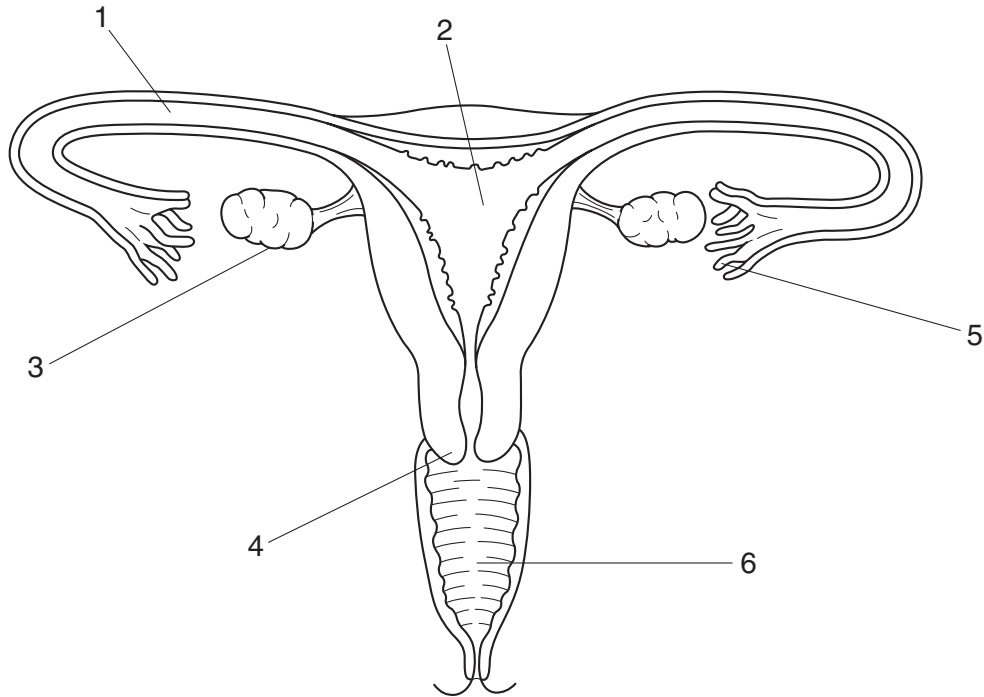
2



The Chest and Lungs

(a) Identify each of the structures labelled 1 – 4.

- 1
- 2
- 3
- 4 [4]



Female Reproductive System

(a) Identify each of the structures labelled 1 – 6 in the diagram.

- 1
- 2
- 3
- 4
- 5
- 6 [6]

(b) Identify **two** functions of the ovaries.

- 1
- 2 [2]

(c) What is meant by each of the following terms?

Menstrual cycle

.....
.....
.....
.....

Fertilisation

.....
.....
.....
.....

Pregnancy

.....
.....
.....
.....

[6]

15
BLANK PAGE

PLEASE DO NOT WRITE ON THIS PAGE

PLEASE DO NOT WRITE ON THIS PAGE



Copyright Information

OCR is committed to seeking permission to reproduce all third-party content that it uses in its assessment materials. OCR has attempted to identify and contact all copyright holders whose work is used in this paper. To avoid the issue of disclosure of answer-related information to candidates, all copyright acknowledgements are reproduced in the OCR Copyright Acknowledgements Booklet. This is produced for each series of examinations, is given to all schools that receive assessment material and is freely available to download from our public website (www.ocr.org.uk) after the live examination series.

If OCR has unwittingly failed to correctly acknowledge or clear any third-party content in this assessment material, OCR will be happy to correct its mistake at the earliest possible opportunity.

For queries or further information please contact the Copyright Team, First Floor, 9 Hills Road, Cambridge CB2 1PB.

OCR is part of the Cambridge Assessment Group; Cambridge Assessment is the brand name of University of Cambridge Local Examinations Syndicate (UCLES), which is itself a department of the University of Cambridge.