

**ADVANCED SUBSIDIARY GCE**  
**HEALTH AND SOCIAL CARE**  
Unit 4: Health and Safety in Care Settings

**F913**

Candidates answer on the question paper

**OCR Supplied Materials:**  
None

**Other Materials Required:**  
None

**Thursday 15 January 2009**  
**Morning**

**Duration:** 1 hour 30 minutes



Candidate Forename		Candidate Surname	
--------------------	--	-------------------	--

Centre Number						Candidate Number				
---------------	--	--	--	--	--	------------------	--	--	--	--

**INSTRUCTIONS TO CANDIDATES**

- Write your name clearly in capital letters, your Centre Number and Candidate Number in the boxes above.
- Use black ink. Pencil may be used for graphs and diagrams only.
- Read each question carefully and make sure that you know what you have to do before starting your answer.
- Answer **all** the questions.
- Do **not** write in the bar codes.
- Write your answer to each question in the space provided, however additional paper may be used if necessary.

**INFORMATION FOR CANDIDATES**

- The number of marks is given in brackets [ ] at the end of each question or part question.
- The total number of marks for this paper is **100**.
- You will be awarded marks for the quality of written communication where an answer requires a piece of extended writing.
- This document consists of **16** pages. Any blank pages are indicated.

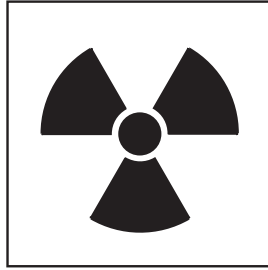
Examiner's Use Only:			
1			
2			
3			
4			
5			
6			
<b>Total</b>			

1 (a) (i) Name the legislation that controls the use of signs such as those shown below (date not required).

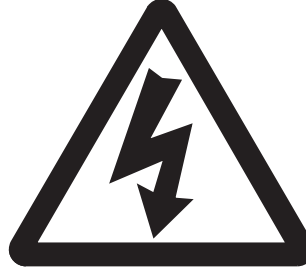
..... [1]



A



B



C



D

(ii) Identify each of the warning signs shown above. For **each** one, suggest where they could be found and describe how each might reduce risk.

A .....

.....

.....

.....

.....

.....

.....

B .....

.....

.....

.....

.....

.....

.....

C .....

.....

.....

.....

.....

.....

.....

**D** .....

.....

.....

.....

.....

.....

.....

..... [12]

**(b) (i)** Give the full name of the organisation responsible for enforcing all Health and Safety legislation.

..... [1]

**(ii)** Give **one** other function of this organisation.

.....

..... [1]

**[Total: 15]**

2 (a) Identify **two** legal requirements for first aid provision in a care setting.

.....  
.....  
..... [2]

(b) Identify **three** pieces of information that should be included in an accident report. Describe the reason for each.

1 .....  
.....  
.....

2 .....  
.....  
.....

3 .....  
.....  
.....

..... [6]

(c) (i) Identify **one** piece of equipment that could be used by a care worker to move a service user.

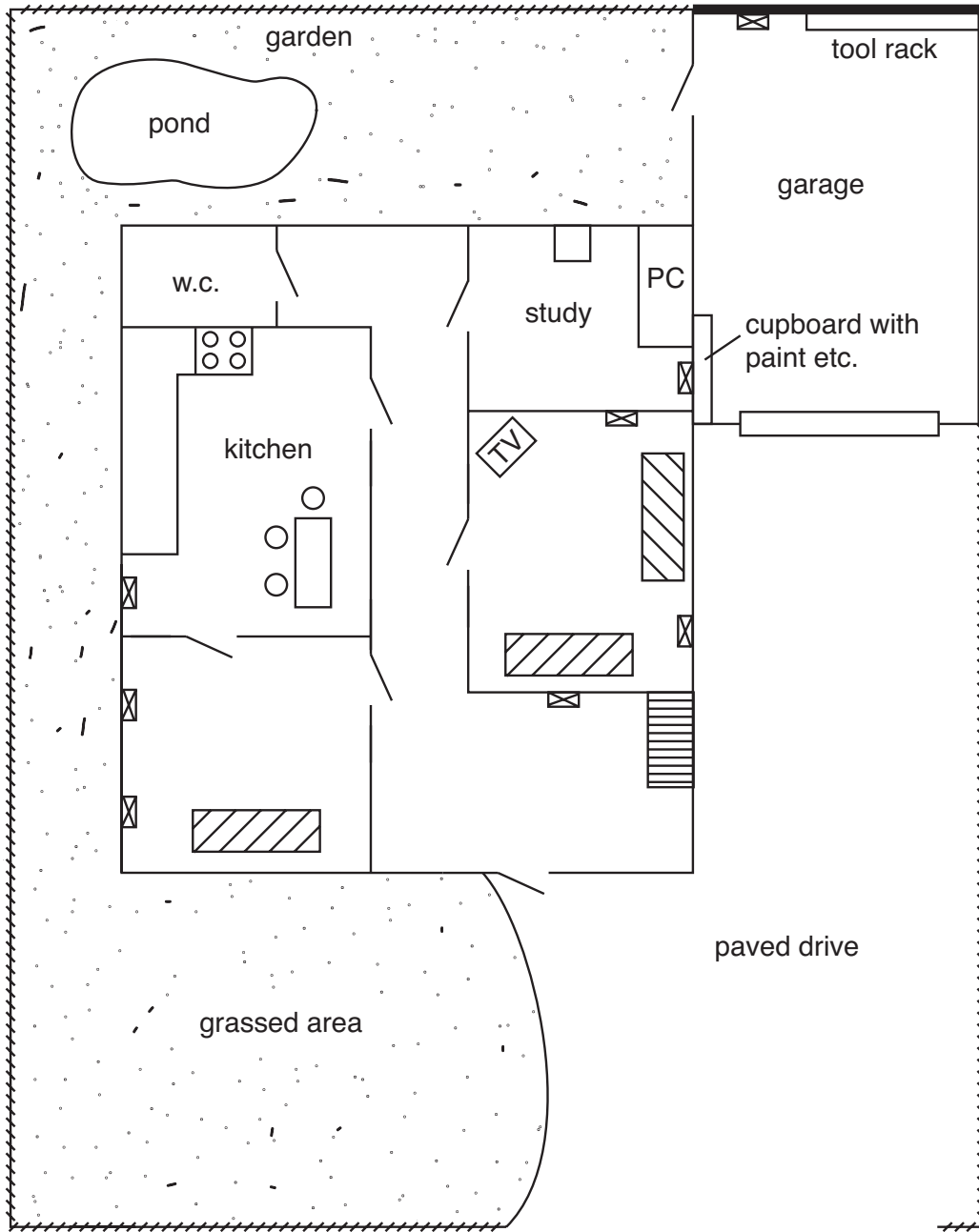
..... [1]





(ii) Identify **one** piece of legislation that controls the use of such equipment (date not required).

..... [1]



3 The house shown on the plan is to be used as a childminder's premises.



- |   |       |       |                |   |                       |
|---|-------|-------|----------------|---|-----------------------|
| ○   | chair | — / — | door opening   |  | stairs to upper floor |
|  | table | ++++  | boundary fence | PC  | personal computer     |
|  | sofa  | ⊠     | plug socket    |  | cooker                |



---

---

---

---

---

---

---

---

---

---

---

---

---

---

---

---

---

---

---

---

---

---

---

---

---

[15]

(b) The final stage of risk assessment is to review the assessment. Discuss the importance of this stage to care workers in a care setting.

---

---

---

---

---

---

---

---

---

---

---

---

---

---

---

---

---

---

---

---

---

---

---

---

---

[5]

**[Total: 20]**



9  
**BLANK PAGE**

**PLEASE DO NOT WRITE ON THIS PAGE**

4 (a) Identify **three** precautions that could be used to prevent the spread of fire in a care setting. Describe how each precaution contributes to fire safety.

1 .....

.....

.....

.....

.....

.....

.....

2 .....

.....

.....

.....

.....

.....

.....

.....

3 .....

.....

.....

.....

.....

.....

.....

.....

..... [6]

(b) Identify **three** standard procedures that should take place during an evacuation in the event of a fire. Describe how each procedure reduces the risk to people in a care setting.

1 .....

.....

.....

.....

.....

.....

.....

.....

2 .....

.....

.....

.....

.....

.....

.....

.....

3 .....

.....

.....

.....

.....

.....

.....

.....

..... [6]













Permission to reproduce items where third-party owned material protected by copyright is included has been sought and cleared where possible. Every reasonable effort has been made by the publisher (OCR) to trace copyright holders, but if any items requiring clearance have unwittingly been included, the publisher will be pleased to make amends at the earliest possible opportunity.

OCR is part of the Cambridge Assessment Group. Cambridge Assessment is the brand name of University of Cambridge Local Examinations Syndicate (UCLES), which is itself a department of the University of Cambridge.