

**ADVANCED SUBSIDIARY GCE
 HEALTH AND SOCIAL CARE**

F913

Unit 4: Health and Safety in Care Settings

MONDAY 2 JUNE 2008

Afternoon
 Time: 1 hour 30 minutes

Candidates answer on the question paper
Additional materials (enclosed): None

Additional materials (required):
 Additional answer paper may be required



Candidate Forename

Candidate Surname

Centre Number

Candidate Number

INSTRUCTIONS TO CANDIDATES

- Write your name in capital letters, your Centre Number and Candidate Number in the boxes above.
- Use blue or black ink. Pencil may be used for graphs and diagrams only.
- Read each question carefully and make sure that you know what you have to do before starting your answer.
- Answer **all** the questions.
- Do **not** write in the bar codes.
- Write your answer to each question in the space provided.

INFORMATION FOR CANDIDATES

- The number of marks for each question is given in brackets [] at the end of each question or part question.
- The total number of marks for this paper is **100**.
- You will be awarded marks for the quality of written communication where an answer requires a piece of extended writing.

FOR EXAMINER'S USE

1	
2	
3	
4	
5	
6	
TOTAL	

This document consists of **15** printed pages and **1** blank page.

1 (a) (i) Name the legislation which controls the storage of dangerous chemicals.
..... [1]

(ii) Name **three** substances governed by this legislation. State how each substance should be stored.

1
.....
.....

2
.....
.....

3
.....
..... [6]

(b) (i) Name the organisation responsible for enforcing safety legislation.
..... [1]

(ii) Name **one** other function that is carried out by this organisation.
.....
..... [1]

(c) (i) Name **one** piece of equipment that could be used by a care worker to move a service user.

..... [1]

(ii) Name **one** piece of legislation that controls the use of this equipment.

..... [1]

(iii) Describe **four** steps that should be taken by a care worker before moving and handling a service user.

1

.....

.....

2

.....

.....

3

.....

.....

4

.....

..... [4]

[Total: 15]

2

4



A



B



C

(a) Identify the **three** safety signs above and state where each is likely to be found. Explain how each sign helps to reduce risk.

A

.....

.....

.....

.....

.....

B

.....

.....

.....

.....

.....

C

.....

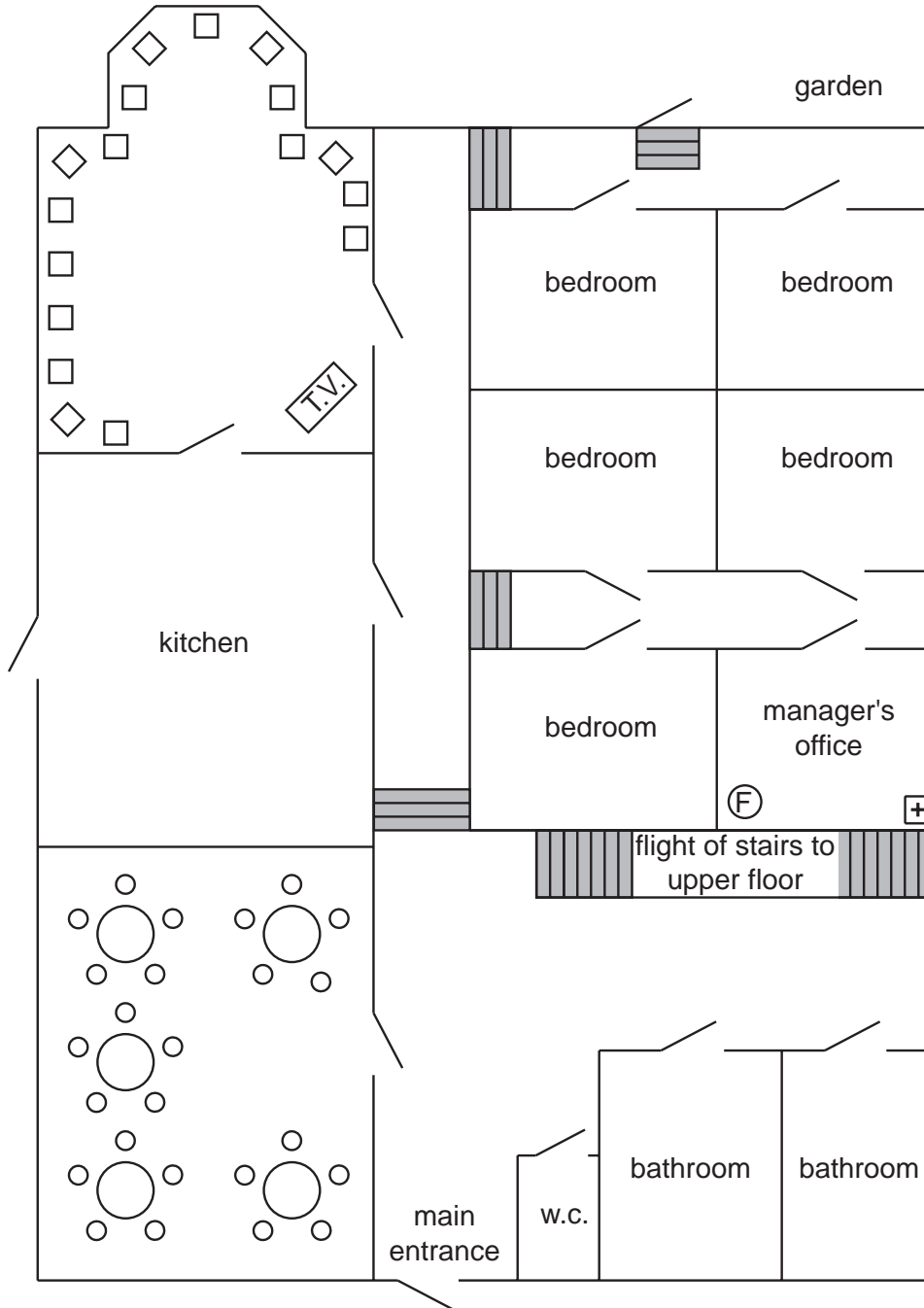
.....





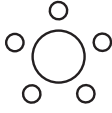

.....

.....

..... [9]

Ground Floor Plan of Residential Home



-  door
-  flight of stairs
-  First Aid box
-  lounge chair
-  dining table and chairs
-  fire extinguisher

4 (a) What is meant by the term 'cross-infection'?

.....
.....
..... [1]

(b) Identify **three** items of protective clothing that could be worn by care workers to prevent cross-infection. Describe how each protects service users.

1

.....
.....

2

.....
.....

3

.....
.....

..... [6]

(c) Identify and explain **two** ways care workers can reduce risks to themselves when dealing with clinical waste.

1

.....
.....

2

.....
.....

..... [4]

6 (a) Identify and explain **four** pieces of information that must be made available to employees concerning first aid provision in the workplace.

1

.....

.....

.....

2.....

.....

.....

.....

3

.....

.....

.....

4

.....

.....

..... [8]

15
BLANK PAGE

PLEASE DO NOT WRITE ON THIS PAGE

PLEASE DO NOT WRITE ON THIS PAGE

Permission to reproduce items where third-party owned material protected by copyright is included has been sought and cleared where possible. Every reasonable effort has been made by the publisher (OCR) to trace copyright holders, but if any items requiring clearance have unwittingly been included, the publisher will be pleased to make amends at the earliest possible opportunity.

OCR is part of the Cambridge Assessment Group. Cambridge Assessment is the brand name of University of Cambridge Local Examinations Syndicate (UCLES), which is itself a department of the University of Cambridge.