

**ADVANCED SUBSIDIARY GCE UNIT
HEALTH AND SOCIAL CARE**

F913

UNIT 4: Health and Safety in Care Settings
WEDNESDAY 6 JUNE 2007

Afternoon

Time: 1 hour 30 minutes

Candidates answer on the question paper.
Additional answer paper may be required.



*
C
U
P
/
T
2
4
6
2
9
*

Candidate
Name

Centre
Number

--	--	--	--	--

Candidate
Number

--	--	--	--

INSTRUCTIONS TO CANDIDATES

- Write your name, Centre Number and Candidate number in the boxes above.
- Answer **all** the questions.
- Use blue or black ink. Pencil may be used for graphs and diagrams only.
- Read each question carefully and make sure you know what you have to do before starting your answer.
- Do **not** write in the bar code.
- Do **not** write outside the box bordering each page.
- **WRITE YOUR ANSWER TO EACH QUESTION IN THE SPACE PROVIDED. ANSWERS WRITTEN ELSEWHERE WILL NOT BE MARKED.**

INFORMATION FOR CANDIDATES

- The number of marks for each question is given in brackets [] at the end of each question or part question.
- The total number of marks for this paper is 100.
- *You will be awarded marks for the quality of written communication where an answer requires a piece of extended writing.*

For Examiner's Use	
1	
2	
3	
4	
5	
6	
Total	

This document consists of **15** printed pages and **1** blank page.

1 (a) Name **one** piece of legislation which controls the safety of employees in care settings.
.....[1]

(b) (i) Name the organisation responsible for enforcing safety legislation.
.....[1]

(ii) Name **one** other function that this organisation carries out.
.....[1]

(c) The Health and Safety poster should be on display in the workplace. Identify **three** pieces of information that an employer should put onto the poster.
1
2
3[3]

(d) Several pieces of legislation deal with safety issues in specific areas.
Describe **three** key features for each piece of legislation listed below.

Reporting of Injuries, Diseases and Dangerous Occurrences Regulations 1995 (RIDDOR)
1
.....
2
.....
3
.....

Control of Substances Hazardous to Health 1999 Regulations (COSHH)
1
.....
2
.....
3
.....

Manual Handling Regulations 1992, Revised 1998

1
.....
2
.....
3
.....[9]

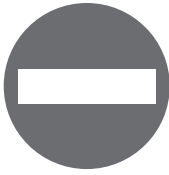
[Total: 15]

2 (a) (i) Name the legislation that controls the use of safety signs.

.....[1]

(ii) Describe the purpose of this legislation and how it helps to reduce risk.

.....
.....
.....
.....[2]



A



B



C



D

(b) Identify the **four** safety signs above. Explain how each one helps to reduce risk.

A

B

C

D

(c) Identify and explain **two** ways in which care workers could maintain their personal safety when dealing with clinical waste.

1

.....

.....

.....

2

.....

.....

.....[4]

[Total: 15]

3 (a) Identify **three** ways to reduce the risk of fire spreading in a care setting. Describe how each way contributes to fire safety.

1

.....

.....

.....

2

.....

.....

.....

3

.....

.....

.....[6]

(b) Identify and explain **three** procedures that should take place during an evacuation in the event of fire.

1

.....

.....

.....

.....

2

.....

.....

.....

.....

3

.....

.....

.....[6]

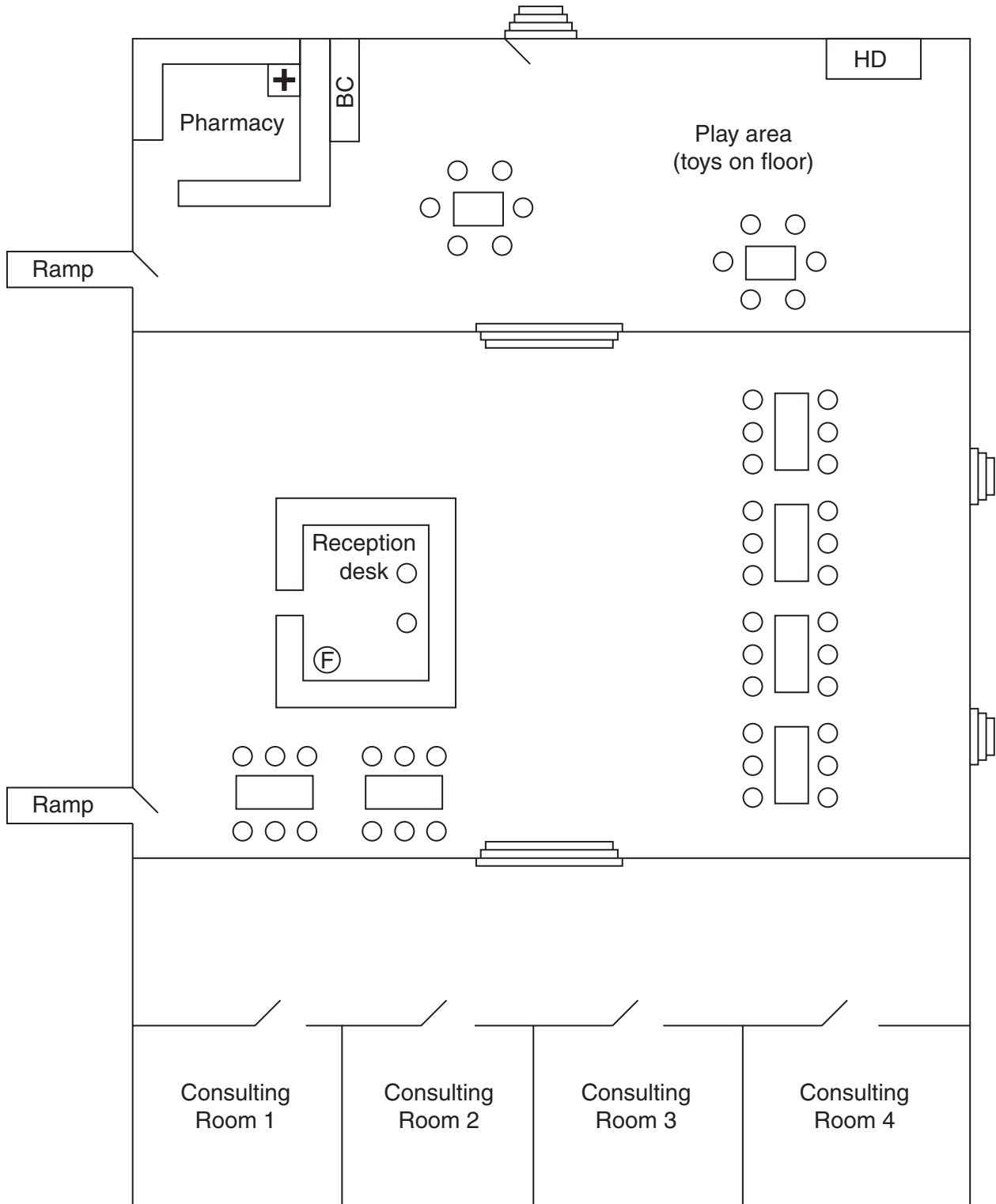
4 (a) List the **five** stages of risk assessment in the correct order.

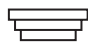



- 1
- 2
- 3
- 4
- 5[5]

PLEASE DO NOT WRITE ON THIS PAGE

QUESTION 4 CONTINUES ON PAGE 10

Plan of Hospital Outpatients Department



- BC – bookcase
- HD – hot drinks machine
- – chair
- – table
-  – stairs
-  – door
-  – First Aid box
-  – fire extinguisher

5 (a) Identify **three** pieces of information that should be included in an accident report. Explain why each is included.

1

.....

.....

.....

2

.....

.....

.....

3

.....

.....

.....[6]

(b) Evaluate the use of protective clothing when worn by care workers.

.....

.....

.....

.....

.....

.....

.....

.....

.....

.....

.....

.....

.....

.....[9]

[Total: 15]

- 6 (a) Describe the legal requirements for First Aid provision in a workplace.

.....
.....
.....
.....
.....
.....
.....
.....
.....
.....
.....
.....
.....
.....
.....
.....
.....
.....
.....[5]

- (b) Assess the factors that should be considered when drawing up a policy for the security of the service users in:

either a Residential Home
or a Nursery

Circle your choice of setting.

.....
.....
.....
.....
.....
.....
.....
.....
.....
.....
.....
.....

