

ENTRY LEVEL CERTIFICATE

SCIENCE

Test B1 Dead or Alive

R591 B1

Candidates answer on the question paper

OCR Supplied Materials:

None

Other Materials Required:

- None

Duration: 10 minutes

| | | | |
|--------------------|--|-------------------|--|
| Candidate Forename | | Candidate Surname | |
|--------------------|--|-------------------|--|

| | | | | | | | | | | |
|---------------|--|--|--|--|--|------------------|--|--|--|--|
| Centre Number | | | | | | Candidate Number | | | | |
|---------------|--|--|--|--|--|------------------|--|--|--|--|

INSTRUCTIONS TO CANDIDATES

- Write your name, Centre Number and Candidate Number in the boxes above. Please write clearly and in capital letters.
- Read each question carefully. Make sure you know what you have to do before starting your answer.
- Answer **all** the questions.

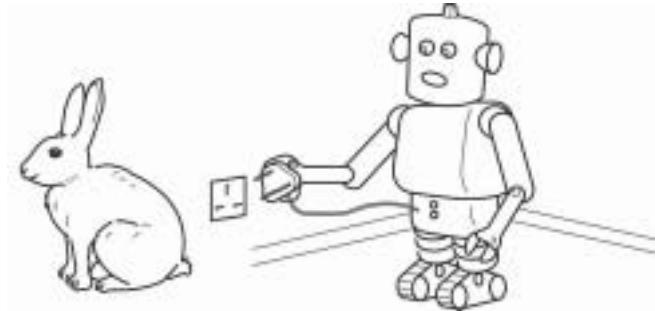
INFORMATION FOR CANDIDATES

- The number of marks for each question is given in brackets [] at the end of each question or part question.
- The total number of marks for this paper is **15**.
- This document consists of **4** pages. Any blank pages are indicated.

| For Teacher's Use | |
|------------------------|--|
| Raw Mark/ 15 | |
| Points/ 2 | |

Answer **all** the questions.

1 Tom and Geri are comparing a rabbit and a robot.



They want to know why the rabbit is alive but the robot is not.
They fill in a table to show what each one can do.

(a) Finish the table by writing **yes** or **no** in the five shaded boxes.

| what it can do | rabbit | robot |
|---------------------|--------|-------|
| it can breathe | yes | |
| it can digest food | | no |
| it can grow | yes | |
| it can move | yes | |
| it can reproduce | | no |
| it can sense things | yes | yes |

[5]

(b) Living things need oxygen to release energy from glucose.

What name is used to describe the process that releases energy in living things?

Put a **ring** around the correct answer.

excretion

reproduction

respiration

[1]

2 Roy's kidneys do not work very well.

A dialysis machine keeps him alive.

He is waiting for a transplant.

(a) Finish the sentences. Choose words from this list.

accepted

blood

donor

host

rejected

Dialysis removes waste from Roy's

He hopes to have a new kidney from a

He hopes the new kidney will not be [3]

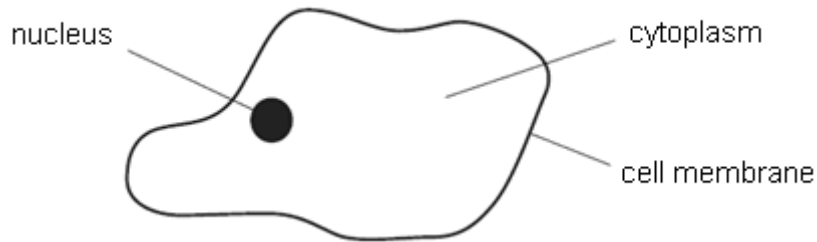
(b) Roy prefers a transplant to dialysis.

Suggest a reason why.

.....

..... [1]

3 The diagram shows an animal cell.



Finish these sentences. Choose labels from the diagram.

Everything that happens in the cell is controlled by the

The cell is held together by the [2]

4 Simon is investigating how exercise affects his pulse rate.

He measures his pulse rate while sitting down.

He then runs as fast as he can for one minute.

He then sits down and measures his pulse rate again.

Simons repeats this for different activities.

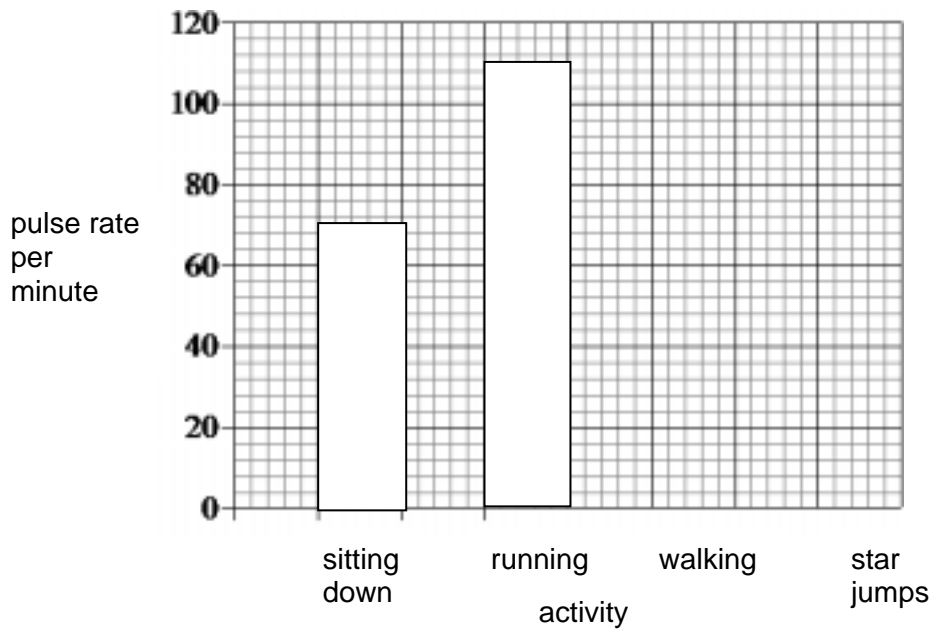
The table shows his results.

| activity | pulse rate per minute |
|--------------|-----------------------|
| sitting down | 70 |
| running | 110 |
| walking | 80 |
| star jumps | 120 |

(a) Finish the bar chart of Simon's results.

Two results have been done for you.

[1]



(b) Which activity makes Simon's body work the hardest?

..... [1]

Explain your answer.

..... [1]



Copyright Information:

Permission to reproduce items where third-party owned material protected by copyright is included has been sought and cleared where possible. Every reasonable effort has been made by the publisher (OCR) to trace copyright holders, but if any items requiring clearance have unwittingly been included, the publisher will be pleased to make amends at the earliest possible opportunity.

OCR is part of the Cambridge Assessment Group. Cambridge Assessment is the brand name of University of Cambridge Local Examinations Syndicate (UCLES), which is itself a department of the University of Cambridge.