

Wednesday 22 May 2013 – Afternoon

**GCSE DESIGN AND TECHNOLOGY
Textiles Technology**

A574/01 Technical Aspects of Designing and Making

Candidates answer on the Question Paper.

OCR supplied materials:
None

Other materials required:
None

Duration: 1 hour 15 minutes



Candidate forename		Candidate surname	
-----------------------	--	----------------------	--

Centre number						Candidate number				
---------------	--	--	--	--	--	------------------	--	--	--	--

INSTRUCTIONS TO CANDIDATES

- Write your name, centre number and candidate number in the boxes above. Please write clearly and in capital letters.
- Use black ink. HB pencil may be used for graphs and diagrams only.
- Read each question carefully. Make sure you know what you have to do before starting your answer.
- Write your answer to each question in the space provided. If additional space is required, you should use the lined page at the end of this booklet. The question number(s) must be clearly shown.
- Answer **all** the questions in Section A **and** Section B.
- Do **not** write in the bar codes.

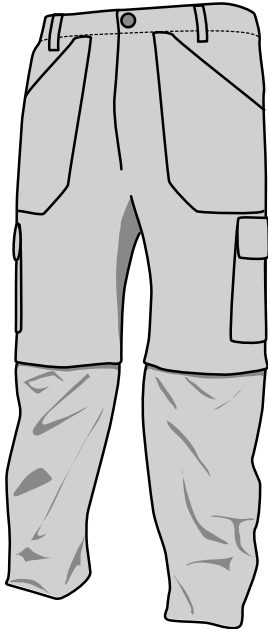
INFORMATION FOR CANDIDATES

- The number of marks is given in brackets [] at the end of each question or part question.
- The total number of marks for this paper is **60**.
- Your quality of written communication is assessed in the questions marked with an asterisk (*).
- This document consists of **12** pages. Any blank pages are indicated.

SECTION A

Answer **all** questions.

1 Fig. 1 shows a pair of trousers designed for outdoor pursuits.



Design Features

- elasticated waistband
- zip fastening
- belt loops
- shrink & fade resistant
- quick drying
- reinforced seat and knees
- made from a heavy duty Dupont with Teflon fabric protector
- ankle zip opening
- lower leg can be removed to convert to shorts
- multi pocketed

Fig. 1

(a) Choose **three** design features of the trousers.

Explain why each design feature is of benefit to the wearer when taking part in outdoor pursuits.

Feature 1

Benefit

.....

.....

Feature 2

Benefit

.....

.....

Feature 3

Benefit

.....

.....

(b) List **three** pre-manufactured components used to make the trousers.

1

2

3

[3]

(c) Give **three** reasons why manufacturers use pre-manufactured components.

1

.....

2

.....

3

.....

[3]

[Total: 12]

2 Fig. 2 shows a school jumper made from knitted fabric.



Fig. 2

(a) (i) State **one** technique that could be used to add the school logo to the jumper.

..... [1]

(ii) Give **one** reason for your choice of technique.

..... [1]

(b) The knitted fabric is made from wool fibres.

Name the process used to make the fibres into yarn.

..... [1]

(c) The school jumper will be manufactured in quantity.

Give **three** advantages of using industrial cutting tools rather than scissors when manufacturing in quantity.

1

.....

2

.....

3

.....

[3]

3 Fig. 3 shows a symbol found on a packet of cold water dye.

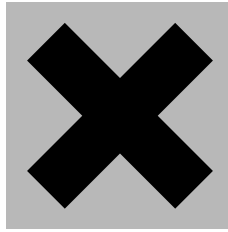


Fig. 3

(a) Give the meaning of the symbol shown in Fig. 3.

..... [1]

(b) Cold water dyes are covered by COSHH regulations.

Name **two** other substances covered by COSHH regulations.

1

2 [2]

(c) List **three** items of protective clothing that should be worn when working with dyes.

1

2

3 [3]

(d) Batik is a decorative dyeing technique.

Complete the table below to describe how to work batik.

Stage	Method
Preparation of fabric	
Preparation of dyebath	
Applying wax	
Creating an interesting effect	
Dyeing the fabric	
Removing the wax	

[6]

[Total: 12]

SECTION B

Answer **all** questions.

- 4 A local college wants to supply its students with bags to carry their books and equipment.

The bag should be:

- easy to carry
- unisex
- environmentally friendly.

- (a) In the space below sketch a design for the student bag.

Annotate your sketch to show design and construction details and how it meets the specification.

5 Fig. 4 shows a denim jacket made using double stitched seams.



Fig. 4

(a) Describe, using notes and / or diagrams, how to work a double stitched seam.

(b) Fig. 5 shows the weave used to make the denim fabric.

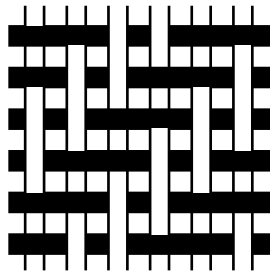


Fig. 5

Name the weave shown in Fig. 5.

..... [1]

(c) Give **two** reasons why the weave shown in Fig. 5 is suitable for the jacket fabric.

- 1
-
- 2
-

[2]

(d) Fig. 6 shows a symbol found on the care label inside the denim jacket.

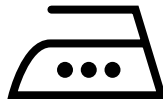


Fig. 6

State what the symbol means.

..... [1]

(e) State **two** ways an old denim jacket could be modified to extend its use.

- 1
-
- 2
-

[2]

[Total: 12]

END OF QUESTION PAPER

ADDITIONAL ANSWER SPACE

If additional answer space is required, you should use the following lined page. The question number(s) must be clearly shown in the margins.

A large rectangular area with horizontal dotted lines for writing, intended for providing additional answer space. A solid vertical line is on the left side, and a solid horizontal line is at the bottom.



Copyright Information

OCR is committed to seeking permission to reproduce all third-party content that it uses in its assessment materials. OCR has attempted to identify and contact all copyright holders whose work is used in this paper. To avoid the issue of disclosure of answer-related information to candidates, all copyright acknowledgements are reproduced in the OCR Copyright Acknowledgements Booklet. This is produced for each series of examinations and is freely available to download from our public website (www.ocr.org.uk) after the live examination series.

If OCR has unwittingly failed to correctly acknowledge or clear any third-party content in this assessment material, OCR will be happy to correct its mistake at the earliest possible opportunity.

For queries or further information please contact the Copyright Team, First Floor, 9 Hills Road, Cambridge CB2 1GE.

OCR is part of the Cambridge Assessment Group; Cambridge Assessment is the brand name of University of Cambridge Local Examinations Syndicate (UCLES), which is itself a department of the University of Cambridge.