



Design and Technology

GCSE

Design and Technology

How to insert video clips
into Controlled Assessment

August 2014

INTRODUCTION

OCR allows candidates to send evidence in electronic file types; for example multimedia submissions. Centres are encouraged to use digital video evidence. This can aid and enhance candidates' presentations and portfolios.

Opportunities for using videos include:

- Using animations and simulations to visualise ideas
- Presenting ideas and information on screen
- Demonstrating functions and motion
- Providing feedback from Users.

All accepted File Formats can be found in the relevant specification as shown below.

Electronic controlled assessment is designed to give candidates an opportunity to demonstrate what they know, understand and can do using current technology. Candidates do not gain marks for using more sophisticated formats or for using a range of formats. A candidate who chooses to use only word documents will not be disadvantaged by that choice.

The following is a guide to assist candidates/centres in the process of adding videos to their work.

Level	Qualification	Web link for Specification in introduction	Page in Specification for Introduction
GCSE	D&T: Electronics and Control Systems	http://www.ocr.org.uk/Images/82551-specification.pdf	55
GCSE	D&T: Food Technology	http://www.ocr.org.uk/Images/82552-specification.pdf	51
GCSE	D&T: Graphics	http://www.ocr.org.uk/Images/82553-specification.pdf	50
GCSE	D&T: Industrial Technology	http://www.ocr.org.uk/Images/82554-specification.pdf	51
GCSE	D&T: Product Design	http://www.ocr.org.uk/Images/82446-specification.pdf	49
GCSE	D&T: Resistant Materials	http://www.ocr.org.uk/Images/82555-specification.pdf	49
GCSE	D&T: Textiles Technology	http://www.ocr.org.uk/Images/82556-specification.pdf	48
GCSE	Engineering	http://www.ocr.org.uk/Images/74468-specification.pdf	48
GCSE	Manufacturing	http://www.ocr.org.uk/Images/83248-specification.pdf	46

To give us feedback on, or ideas about the OCR resources you have used, email resourcesfeedback@ocr.org.uk

OCR Resources: *the small print*

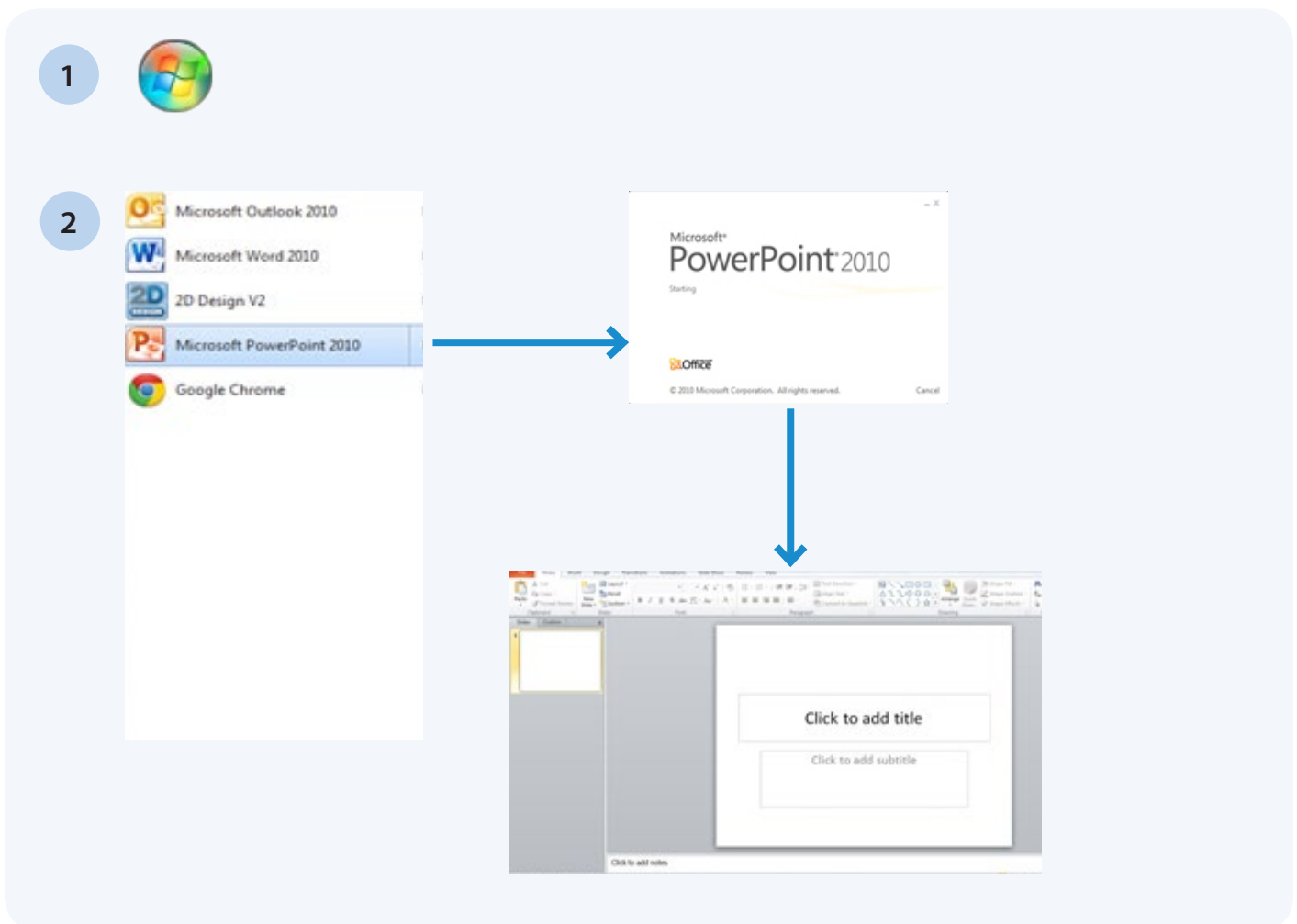
OCR's resources are provided to support the teaching of OCR specifications, but in no way constitute an endorsed teaching method that is required by the Board and the decision to use them lies with the individual teacher. Whilst every effort is made to ensure the accuracy of the content, OCR cannot be held responsible for any errors or omissions within these resources.

© OCR 2013 - This resource may be freely copied and distributed, as long as the OCR logo and this message remain intact and OCR is acknowledged as the originator of this work.

INSERTING A VIDEO INTO YOUR GCSE CONTROLLED ASSESSMENT

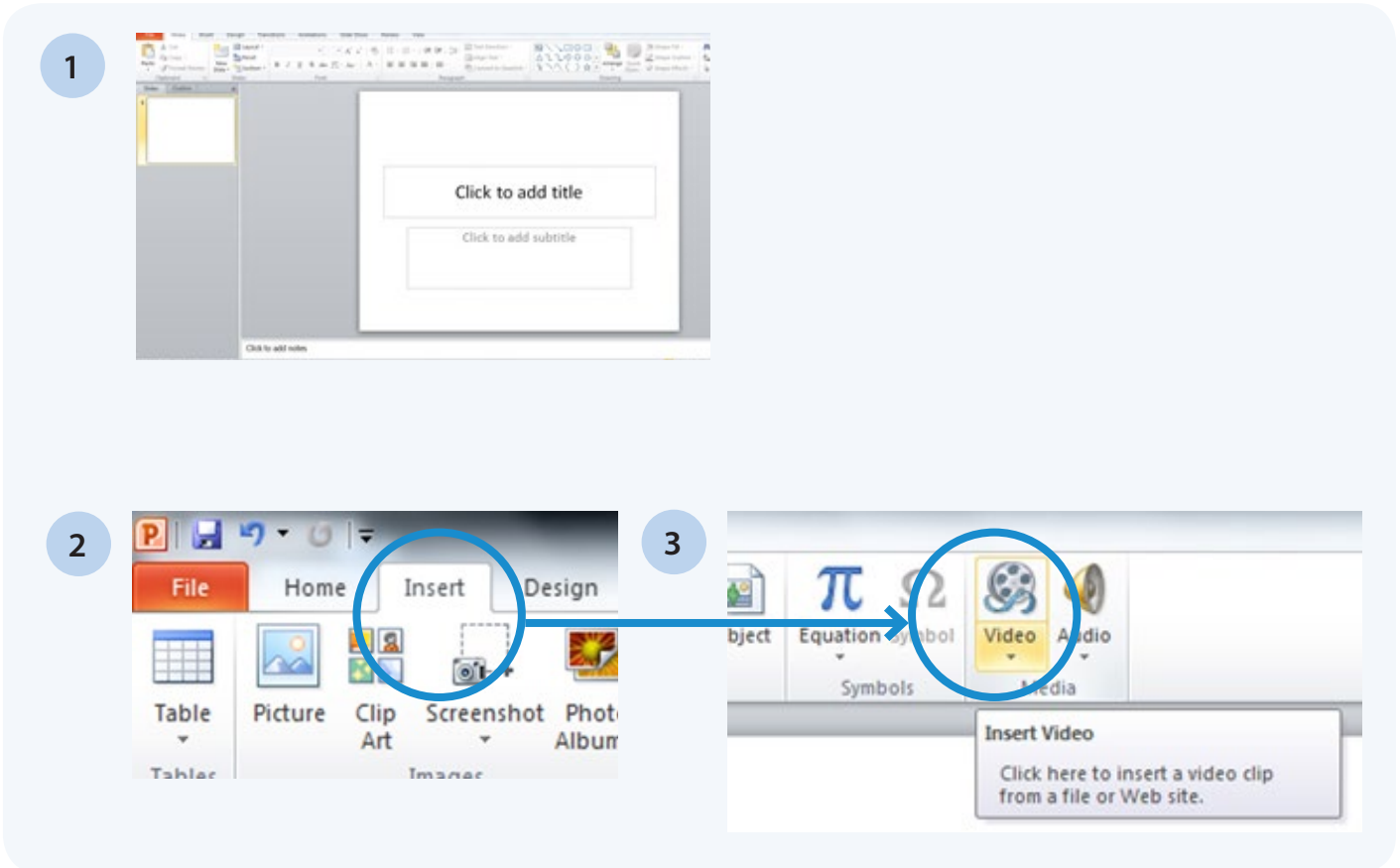
OPEN POWERPOINT 2010

1. Go to the windows Start icon located in the bottom left corner. Then left click once.
2. Select the software by hovering over it until it turns blue then double click it and Power Point will open.

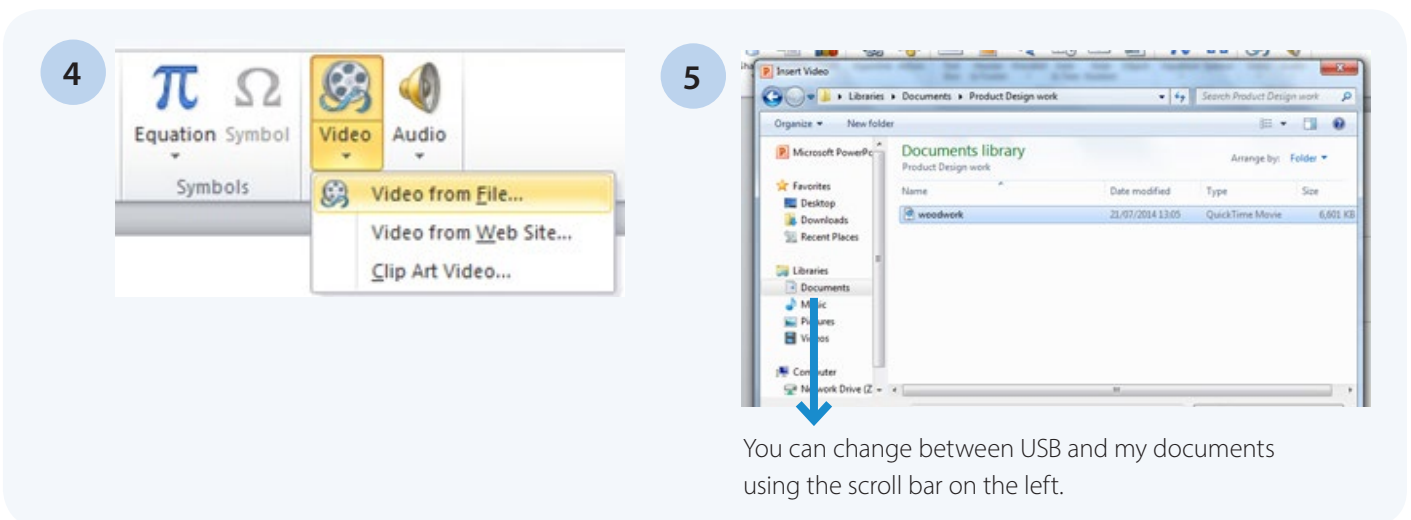


ADDING THE VIDEO FILE

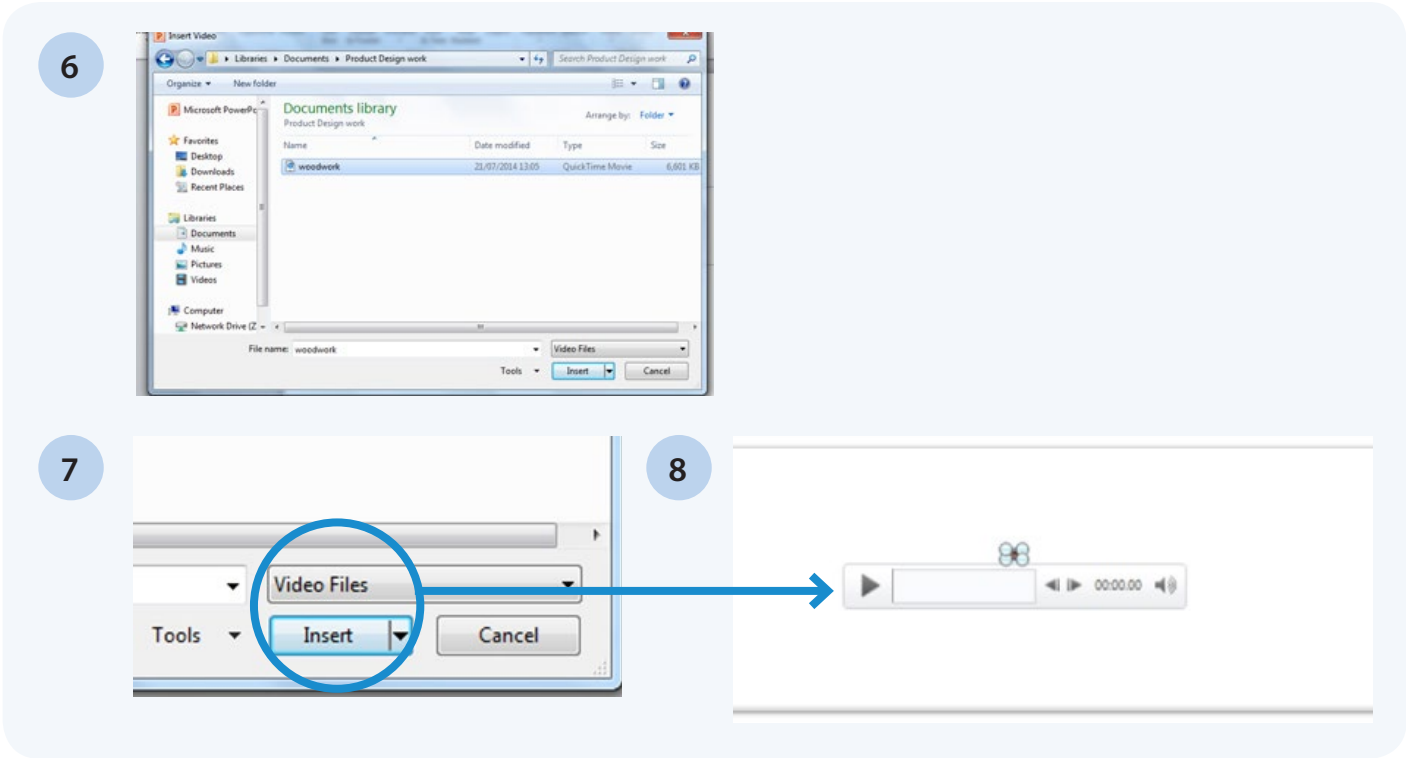
1. Once PowerPoint is open you can begin to add your video file.
2. Go to the 'Insert' heading located in the Tool bar at the top and left click once. This will change your tool options.
3. Located at the end of these options is a Video icon.



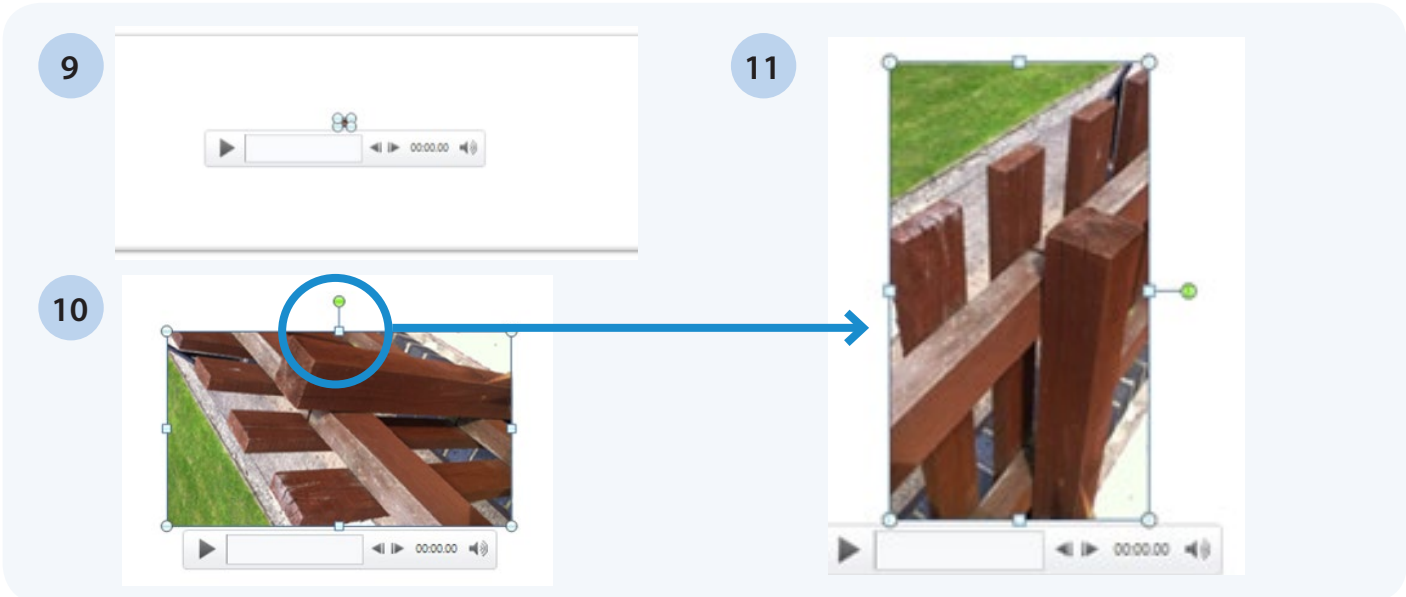
4. Click the video icon once it will then show a dropdown menu. Select and click the "video from file..." option
5. A file browse menu will open. Now locate your VIDEO file. Tip have it saved in a folder linked to your course.



6. Once you have found your file left click once and it will become highlighted in a blue colour.
7. Now click the insert button located in the bottom right of the browse menu. Click this button once.
8. Your video will load. Once it has completed you will see a very small screen with a "Play" tool bar.

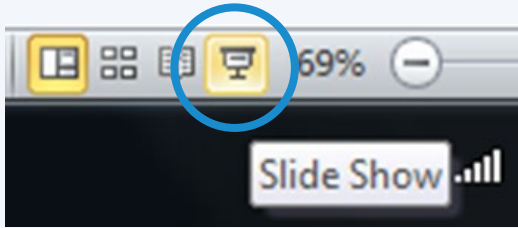


9. You must now resize your video by hovering over one of the circles and holding the left mouse button in and moving your mouse.
10. Now you can see your video better.
11. If your video is the wrong way round you can rotate it by using the green circle.

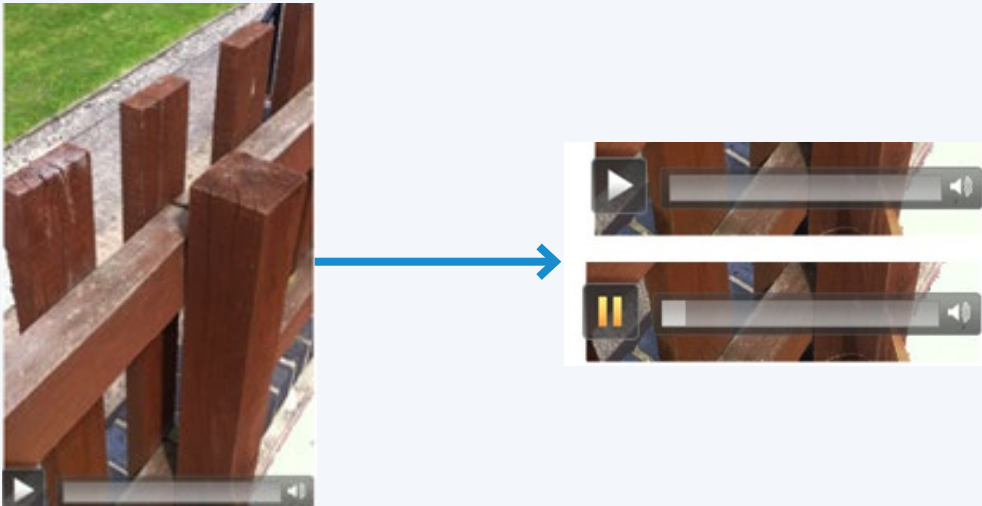


- Now you just need to check that your video works when you view your work in Presentation mode. Click the “slide show” button located in the bottom right corner.
- Hover over the video and the play tool bar will appear. Press the PLAY button and your video will begin. Press Pause and escape button when you are happy your video is working.
- Now save your work so that you do not lose what you have just done.

12



13



14



Contact us

Keep up to date with the latest news by registering to receive e-alerts at www.ocr.org.uk/updates

Telephone 01223 553998

Facsimile 01223 552627

Email general.qualifications@ocr.org.uk

