



Psychology

A Level

Psychology

Guide to Active Results

November 2014

OCR's Active Results is a free, online results analysis service that allows centres to review their pupils' results in detail, collectively or individually, from OCR examinations. This enables centres to comprehensively analyse their achievements and will also highlight any areas of the specification requiring a greater teaching focus.

For A Level Psychology, Active Results enables centres to review results in a variety of different ways:

- by centre and specification, comparing with the national proportions for each grade
- by candidate, showing raw marks against the national averages
- by candidate breakdown of topics
- by the candidate's individual marks for each question, compared against the national average (useful for candidates who are resitting to identify areas of weakness).

Reports can be generated and exported in a variety of formats and stored for student/centre records.

First of all you will need to access and log in to the OCR Interchange website using the url below.

<https://interchange.ocr.org.uk>

Welcome

You can use Interchange to securely access candidate information and online services for all OCR qualifications, 24 hours a day.

New features will be added over the coming months. Please check the [OCR website](#) and your email for information.

Login

Login ID: * (for centre users this will be your centre number)

Username:

Password: (case sensitive)

[Forgotten your password?](#)

Forgotten your password?

1. To **log in** you will require a **user name** and **password**, usually arranged and authorized for you by your examinations officer in your centre.

This is the **first screen** you see when you log in.

2. To access all the many and varied ways to review and analyse your results hover your mouse over the **'Results'** button here.

OCR **interchange**

You are logged in as: [username] [Help](#) [Log out](#)

[Print page](#)

You are here: Home

By task

- Candidates
- Entries
- Access arrangements
- Coursework and tests
- e-Assessment
- Certification claims
- **Results**
- Post results
- Centre information
- Search
- Resources and materials
- Admin

By qualification

- GCE, GCSE, Cambridge Nationals...
- OCR Nationals
- Cambridge Technicals
- QCF
- Functional Skills
- Skills for Life
- NVQ
- Vocationally related
- CLAIT & ITQ
- Progression Qualifications

Results

- GCE, GCSE, Cambridge Nationals...
- Results by candidate
- Results by assessment
- Diploma results
- Reports on moderated work
- EDI Results
- Results documents
- Other qualifications
- Test results
- Computer-based results
- Candidate achievement
- Learning program
- Results analysis
- Active Results

Search for results

Date last updated: 16/04/2014 10:43:14

Results by subject

This screen allows you to find the list of your centres candidates who have results in a specified assessment (or session). To help you narrow down your search, enter as much information as you can about the assessment you are looking for.

Session: = June 2013

Qualification Type: = All

Assessment Code: = G541

Option Code: =

Candidate Status: = All

Enter exam session here

Enter **Unit code** here - eg **G541** (for Psychological Investigations)

3. This brings up a **drop down menu** of options you can then select.

4. Clicking **'Results by assessment'** brings up this screen.

By task

- Candidates
- Entries
- Access arrangements
- Coursework and tests
- e-Assessment
- Certification claims
- Results**
- Post results
- Centre information
- Search
- Resources and materials
- Admin

By qualification

- GCE, GCSE, Cambridge Nationals...
- OCR Nationals
- Cambridge Technicals
- QCF
- Functional Skills
- Skills for Life
- NVQ
- Vocationally related
- CLAIT & ITQ
- Progression Qualifications

LIST OF ASSESSMENTS

Date last updated: 16/04/2014 09:41:13

Search criteria

Assess Code : G542 Title : CORE STUDIES

Session = June 2013

Results matching these criteria:

To download the details below, select the Export button. This will export the details to a file either in Excel or a comma separated text file. [Export](#)

Assess Code	Title	Qualification	Number of Candidates	
G542	CORE STUDIES	Advanced GCE Unit	238	Results By Entry Code

5. Click **here** to view results from all the candidates in your centre.

<div> <div>< previous</div> <div>1 - 10</div> <div>of 60</div> <div>next ></div> </div>							
Assessment	Assessment Title	Candidate Number	Candidate ULN	Name	Candidate UCI	Centre No	Grade UMS
G541	PSYCHOLOGICAL INVESTIGATIONS	39	5687419569		401390090039T	40131	c 38 / 60 (max)
G541	PSYCHOLOGICAL INVESTIGATIONS	82	3665380528		401390090082H	40131	d 30 / 60 (max)
G541	PSYCHOLOGICAL INVESTIGATIONS	102	1468156445		404020090102E	40131	e 26 / 60 (max)
G541	PSYCHOLOGICAL INVESTIGATIONS	346	5607292249		401130090346R	40131	e 26 / 60 (max)
G541	PSYCHOLOGICAL INVESTIGATIONS	355	1950467928		401130090355T	40131	u 20 / 60 (max)
G541	PSYCHOLOGICAL INVESTIGATIONS	370	5594498590		401130090370Y	40131	a 48 / 60

More detailed review and analysis options are available

You are here: Home

By task

- Candidates
- Entries
- Access arrangements
- Coursework and tests
- e-Assessment
- Certification claims
- Results
- Post results
- Centre information
- Search
- Resources and materials
- Admin

By qualification

- GCE, GCSE, Cambridge Nationals...
- OCR Nationals
- Cambridge Technicals
- QCF
- Functional Skills
- Skills for Life
- NVQ
- Vocationally related
- CLAiT & ITQ
- Progression Qualifications

Welcome to Interchange

GCE, GCSE, Cambridge Nationals...

- Results by candidate
- Results by assessment
- Diploma results
- Reports on moderated work
- EDI Results
- Results documents

Other qualifications

- Test results
- Computer-based results
- Candidate achievements
- Learning programmes

Results analysis

- Active Results

More detailed review and analysis options are available

1. A variety of much more detailed, statistical analyses comparing candidates within your centre and against candidates for the national is available by clicking the '**Active Results**' option from the drop down menu.

Welcome to OCR Active Results

OCR's Active Results service provides teachers with access to in depth results data enabling more comprehensive analysis of both your centre and candidate results. It is intended that the service is intuitive and easy to use whilst also providing sufficient capabilities to allow you to view the data in ways that best meet your requirements.

Choose the qualifications and subjects you want to view by changing your preferences.

Get started and view reports

> Specification reports

Two report types offering results analysis at a specification level

> Unit reports

Seven report types offering results analysis at a unit level

> Candidate search

Four report types offering results analysis focussed on individual candidates

2. This brings up a number of different **options to choose from**.

Unit reports

To view unit reports, select the report type you need from the 'Select report type' dropdown list and click on 'View this report'.

See our document for [available qualifications for Active Results](#) for more information, or click on the yellow icon next to each report.

Refine results by

Subject: Qualification:
 Series: Tier:

Update results

16 reports for 'Psychology' 'Jun-13'

Code	Unit	Qualification	Tier	Select report type	View report
G541/01	Psychological Investigations	GCE	-	Question Level Analysis	View this report
G542/01	Core Studies	GCE	-	Question Level Analysis	View this report
G543/01	Options in Applied Psychology	GCE	-	Candidate Unit Report	View this report
G543/01	Options in Applied Psychology	GCE	-	All Candidates Item Marks Report	View this report
G543/01	Options in Applied Psychology	GCE	-	Unit: Series Comparison	View this report
G544/01	Approaches and Research Methods in Psychology	GCE	-	Question Level Analysis	View this report

3. Enter 'Psychology' in the Subject box and the exam date you want to review in the Series box.

Question Level Analysis

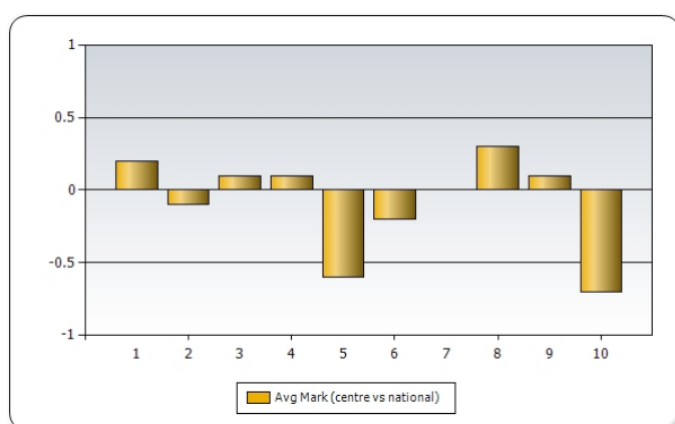
[View paper](#)

Qualification: GCE Unit: G541/01 Psychological Investigations
 Series: Jun-13 Tier: - Candidates: 59

Question	Average mark (Centre)	Average mark (OCR National)	Marks available
1	3.9	3.7	4
2	2.2	2.3	3
3	6.4	6.3	10
4	2.3	2.2	3
5	2.3	2.9	4
6	5.6	5.8	10
7	3.9	3.9	6
8	4.0	3.7	6
9	3.5	3.4	6
10	4.7	5.4	8

4. Choose the **type of report** you want from the drop down menu here (eg 'Question Level Analysis').

This then shows a breakdown comparing your centre with the national average for each question on the paper, with a barchart clearly showing how much above or below the average your centre is.

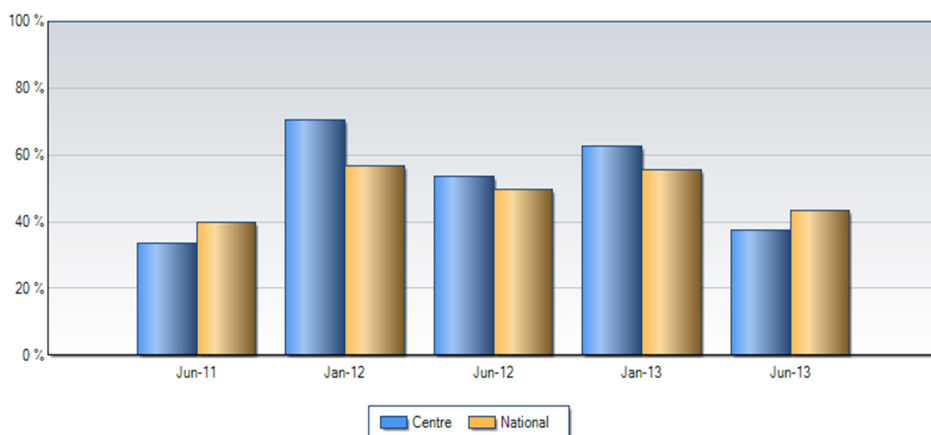


Unit: Series Comparison

Unit code	Qualification	Unit	Series	Tier	Candidates	UMS centre average	UMS national average
G541/01	GCE	Psychological Investigations	Jun-13	-	22/59	29/60	32/60
G541/01	GCE	Psychological Investigations	Jan-13	-	161/257	37/60	35/60
G541/01	GCE	Psychological Investigations	Jun-12	-	15/28	33/60	33/60
G541/01	GCE	Psychological Investigations	Jan-12	-	161/229	38/60	35/60
G541/01	GCE	Psychological Investigations	Jun-11	-	9/27	31/60	32/60

The 'Unit Series Comparison' option from is a useful way to see how your centre compares to the national average across a number of different exam sessions.

Series Comparison for Unit



Click on 'Specification Reports' to review your centre against the national average for the whole AS or A2 qualification.

Results

OCR's Active Results service provides teachers with access to in depth results data enabling more comprehensive analysis of both your centre and candidate results. It is intended that the service is intuitive and easy to use whilst also providing sufficient capabilities to allow you to view the data in ways that best meet your requirements.

Choose the qualifications and subjects you want to view by changing your preferences.

Get started and view reports

> Specification reports

Two report types offering results analysis at a specification level



> Unit reports

Seven report types offering results analysis at a unit level



> Candidate search

Four report types offering results analysis focussed on individual candidates



Specification reports


To view specification reports, select the report you need from the 'Select report type' dropdown list and click on 'View this report'.

See our document for [available qualifications for Active Results](#) for more information, or click on the yellow icon next to each report.

Refine results by

Subject Qualification Series [Update results](#)

6 reports for 'Psychology' 'Jun-13'

Code	Specification	Qualification	Select report type	View report
H168	Psychology	Advanced Sub. GCE	Specification Grade Breakdown 	View this report
H568	Psychology			

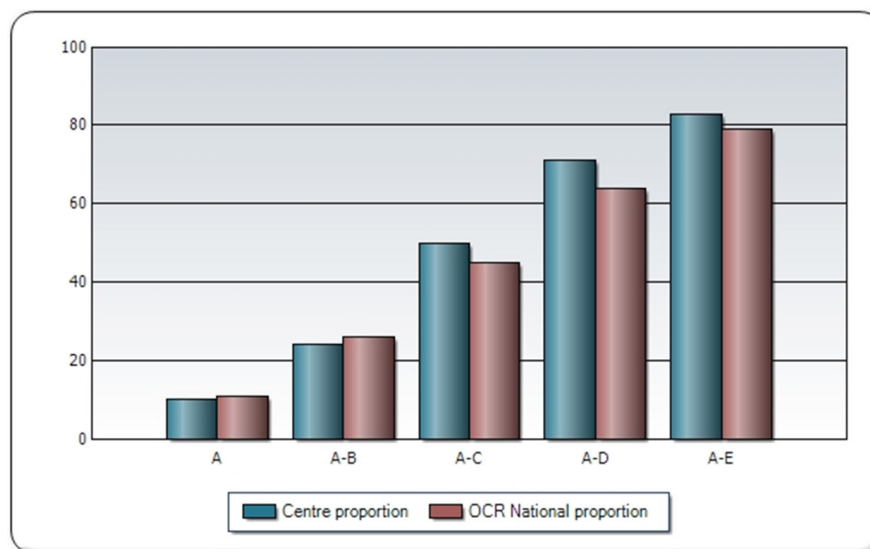
Specification Grade Breakdown

Qualification: Advanced Sub. GCE

Specification: Psychology

Series: Jun-13

Grades	Number of candidates	Centre proportion	OCR National proportion
All Grades	<u>235</u>	-	-
A	<u>23</u>	10 %	11 %
A-B	<u>56</u>	24 %	26 %
A-C	<u>117</u>	50 %	45 %
A-D	<u>167</u>	71 %	64 %
A-E	<u>195</u>	83 %	79 %



We'd like to know your view on the resources we produce. By clicking on the 'Like' or 'Dislike' button you can help us to ensure that our resources work for you. When the email template pops up please add additional comments if you wish and then just click 'Send'. Thank you.

OCR Resources: the small print

OCR's resources are provided to support the teaching of OCR specifications, but in no way constitute an endorsed teaching method that is required by the Board and the decision to use them lies with the individual teacher. Whilst every effort is made to ensure the accuracy of the content, OCR cannot be held responsible for any errors or omissions within these resources.

© OCR 2014 - This resource may be freely copied and distributed, as long as the OCR logo and this message remain intact and OCR is acknowledged as the originator of this work.

Contact us

Keep up to date with the latest news by registering to receive e-alerts at www.ocr.org.uk/updates

Telephone 01223 553998

Facsimile 01223 552627

Email general.qualifications@ocr.org.uk

