



**Monday 16 June 2014 – Morning**

**A2 GCE HEALTH AND SOCIAL CARE**

**F921/01 Anatomy and Physiology in Practice**

Candidates answer on the Question Paper.

**OCR supplied materials:**

None

**Other materials required:**

None

**Duration:** 1 hour 30 minutes



Candidate forename		Candidate surname	
-----------------------	--	----------------------	--

Centre number						Candidate number				
---------------	--	--	--	--	--	------------------	--	--	--	--

**INSTRUCTIONS TO CANDIDATES**

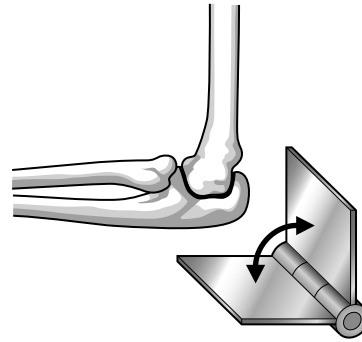
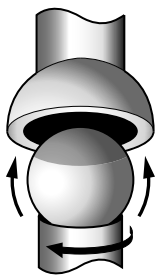
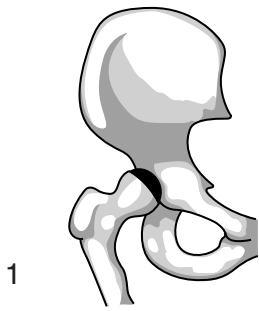
- Write your name, centre number and candidate number in the boxes above. Please write clearly and in capital letters.
- Use black ink. HB pencil may be used for graphs and diagrams only.
- Read each question carefully. Make sure you know what you have to do before starting your answer.
- Write your answer to each question in the space provided. If additional space is required, you should use the lined pages at the end of this booklet. The question number(s) must be clearly shown.
- Answer **all** the questions.
- Do **not** write in the bar codes.

**INFORMATION FOR CANDIDATES**

- The number of marks is given in brackets [ ] at the end of each question or part question.
- The total number of marks for this paper is **100**.
- The quality of written communication will be taken into account in marking your answer to questions marked with an asterisk (\*).
- This document consists of **20** pages. Any blank pages are indicated.

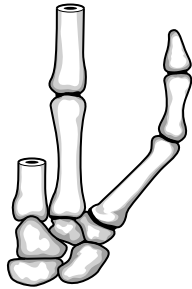
1

2

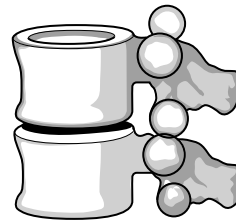


1

2



3



4

**Types of joint**

(a) Identify each of the types of joint labelled 1 – 4.

- 1 .....
- 2 .....
- 3 .....
- 4 .....

[4]

(b) Describe **one** function of each part of the brain given below.

Cerebellum .....

.....  
.....  
.....  
.....  
.....

Medulla .....

.....  
.....  
.....  
.....  
.....

Corpus callosum .....

.....  
.....  
.....  
.....  
.....

Cerebral hemispheres .....

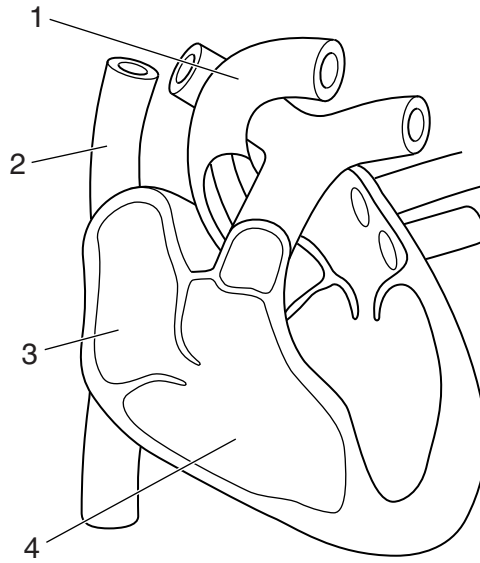
.....  
.....  
.....  
.....  
.....

**[8]**



5  
**BLANK PAGE**

**PLEASE DO NOT WRITE ON THIS PAGE**



**The heart**

**(a)** Identify each of the structures labelled 1 – 4.

- 1 .....
- 2 .....
- 3 .....
- 4 .....

**[4]**

**(b)\*** Explain functions of different blood cell types.

**[10]**

.....

.....

.....

.....

.....

.....

.....

.....

.....

.....

.....

.....

.....

.....

.....

.....

.....

.....

.....

.....

.....

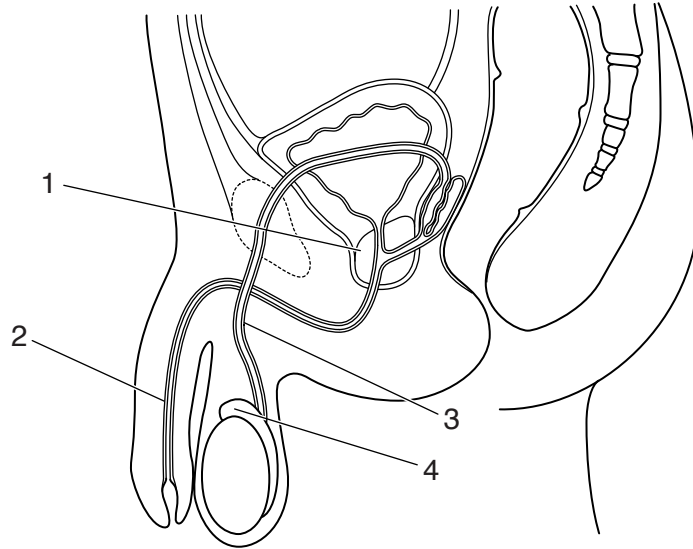
.....

.....









**Male reproductive system**

**(a)** Identify each of the structures numbered 1 – 4.

- 1 .....
- 2 .....
- 3 .....
- 4 .....

**[4]**

**(b)\*** Describe possible causes of male infertility.

.....

.....

.....

.....

.....

.....

.....

.....

.....

.....

.....

.....

.....

.....

.....

.....

.....

.....

.....

.....

.....

**[4]**



.....

.....

.....

.....

.....

.....

.....

.....

.....

.....

.....

.....

.....

.....

.....

.....

.....

.....

.....

.....

.....

.....





5\* Evaluate how diet can affect the health and well-being of an individual.

[20]

.....

.....

.....

.....

.....

.....

.....

.....

.....

.....

.....

.....

.....

.....

.....

.....

.....

.....

.....

.....

.....

.....

.....

.....

.....

.....

.....

.....

A series of horizontal dotted lines for writing.

.....

.....

.....

.....

.....

.....

.....

.....

**END OF QUESTION PAPER**



**ADDITIONAL ANSWER SPACE**

If additional answer space is required, you should use the following lined page(s). The question number(s) must be clearly shown in the margins.

A large area of lined paper for writing. It consists of a vertical solid line on the left side, creating a margin. To the right of this line, there are numerous horizontal dotted lines spaced evenly down the page, providing a guide for handwriting.

Lined writing area with a vertical margin line on the left and horizontal dotted lines.



**PLEASE DO NOT WRITE ON THIS PAGE**



**Copyright Information**

OCR is committed to seeking permission to reproduce all third-party content that it uses in its assessment materials. OCR has attempted to identify and contact all copyright holders whose work is used in this paper. To avoid the issue of disclosure of answer-related information to candidates, all copyright acknowledgements are reproduced in the OCR Copyright Acknowledgements Booklet. This is produced for each series of examinations and is freely available to download from our public website ([www.ocr.org.uk](http://www.ocr.org.uk)) after the live examination series.

If OCR has unwittingly failed to correctly acknowledge or clear any third-party content in this assessment material, OCR will be happy to correct its mistake at the earliest possible opportunity.

For queries or further information please contact the Copyright Team, First Floor, 9 Hills Road, Cambridge CB2 1GE.

OCR is part of the Cambridge Assessment Group; Cambridge Assessment is the brand name of University of Cambridge Local Examinations Syndicate (UCLES), which is itself a department of the University of Cambridge.