

Monday 16 June 2014 – Morning

**GCSE GATEWAY SCIENCE
FURTHER ADDITIONAL SCIENCE B**

B761/02 Further Additional Science modules B5, C5, P5 (Higher Tier)

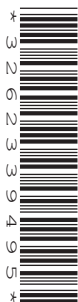
Candidates answer on the Question Paper.
A calculator may be used for this paper.

OCR supplied materials:
None

Other materials required:

- Pencil
- Ruler (cm/mm)

Duration: 1 hour 15 minutes




Candidate forename		Candidate surname	
--------------------	--	-------------------	--

Centre number							Candidate number				
---------------	--	--	--	--	--	--	------------------	--	--	--	--

INSTRUCTIONS TO CANDIDATES

- Write your name, centre number and candidate number in the boxes above. Please write clearly and in capital letters.
- Use black ink. HB pencil may be used for graphs and diagrams only.
- Answer **all** the questions.
- Read each question carefully. Make sure you know what you have to do before starting your answer.
- Write your answer to each question in the space provided. Additional paper may be used if necessary but you must clearly show your candidate number, centre number and question number(s).
- Do **not** write in the bar codes.

INFORMATION FOR CANDIDATES

- The quality of written communication is assessed in questions marked with a pencil .
- A list of equations can be found on page 2.
- The Periodic Table can be found on the back page.
- The number of marks is given in brackets [] at the end of each question or part question.
- The total number of marks for this paper is **75**.
- This document consists of **24** pages. Any blank pages are indicated.

EQUATIONS

$$\text{energy} = \text{mass} \times \frac{\text{specific heat capacity}}{\text{temperature change}} \times \text{temperature change}$$

$$\text{resistance} = \frac{\text{voltage}}{\text{current}}$$

$$\text{energy} = \text{mass} \times \text{specific latent heat}$$

$$v = u + at$$

$$\text{efficiency} = \frac{\text{useful energy output} (\times 100\%)}{\text{total energy input}}$$

$$v^2 = u^2 + 2as$$

$$s = ut + \frac{1}{2}at^2$$

$$\text{wave speed} = \text{frequency} \times \text{wavelength}$$

$$m_1u_1 + m_2u_2 = (m_1 + m_2)v$$

$$\text{power} = \text{voltage} \times \text{current}$$

$$\text{refractive index} = \frac{\text{speed of light in vacuum}}{\text{speed of light in medium}}$$

$$\text{average speed} = \frac{\text{distance}}{\text{time}}$$

$$\text{magnification} = \frac{\text{image size}}{\text{object size}}$$

$$\text{distance} = \text{average speed} \times \text{time}$$

$$l_e = l_b + l_c$$

$$s = \frac{(u + v)}{2} \times t$$

$$\frac{\text{voltage across primary coil}}{\text{voltage across secondary coil}} = \frac{\text{number of primary turns}}{\text{number of secondary turns}}$$

$$\text{acceleration} = \frac{\text{change in speed}}{\text{time taken}}$$

$$\text{force} = \text{mass} \times \text{acceleration}$$

$$\text{power loss} = (\text{current})^2 \times \text{resistance}$$

$$\text{weight} = \text{mass} \times \text{gravitational field strength}$$

$$\text{work done} = \text{force} \times \text{distance}$$

$$V_p I_p = V_s I_s$$

$$\text{power} = \frac{\text{work done}}{\text{time}}$$

$$\text{power} = \text{force} \times \text{speed}$$

$$\text{KE} = \frac{1}{2}mv^2$$

$$\text{momentum} = \text{mass} \times \text{velocity}$$

$$\text{force} = \frac{\text{change in momentum}}{\text{time}}$$

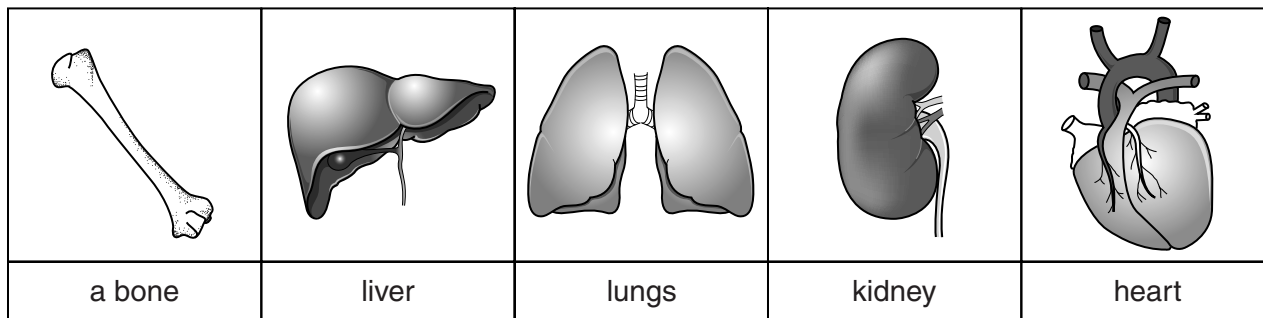
$$\text{GPE} = mgh$$

Answer **all** the questions.

SECTION A – Module B5

1 The body contains different organs.

Five of these are shown in the pictures.



(a) Answer these questions by choosing from the five organs.

(i) Which organ can be damaged by osteoporosis?

..... [1]

(ii) Which organ contains the AVN (atrioventricular node)?

..... [1]

(b) The table shows the urea concentration in the blood entering and leaving three of the organs in the pictures.

Organ	Blood urea concentration in mg/100 ml of blood	
	Blood entering	Blood leaving
liver	16	29
lungs	29	29
kidneys	29	16

Which organ makes urea and what happens to urea in the other two organs?

You must use the data in your answer.

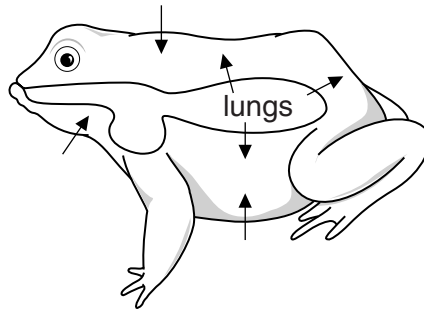
.....

 [3]

[Total: 5]
Turn over

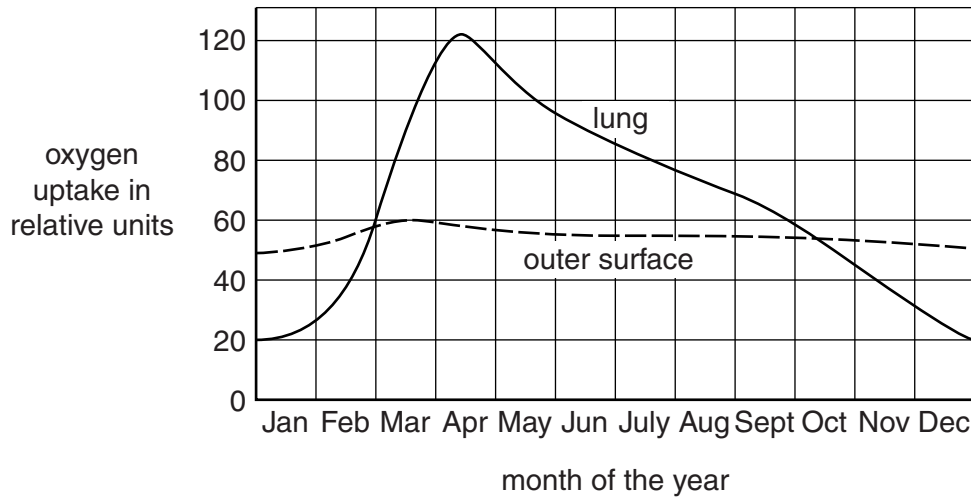
2 This question is about gaseous exchange.

A frog can take in oxygen through its skin and lungs.



(a) Look at the graph.

It shows the amount of oxygen taken up by a frog at different times of the year.



Describe **two** patterns shown in the graph.

.....

.....

.....

..... [2]

(b) Frogs can only live in certain habitats.

Their skin is adapted to take in oxygen from its surroundings.

Explain why this restricts where they can live.

.....

.....

..... [2]

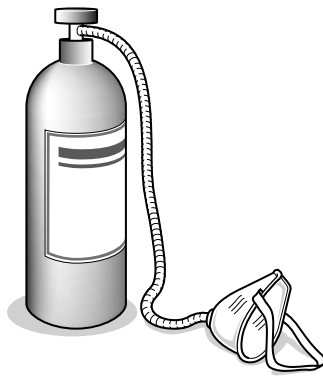
(c) Gaseous exchange in humans only happens in the lungs.

This is speeded up by breathing.

If the trachea is blocked, a person may stop breathing.

To treat this, doctors would first remove the blockage.

The patient may then breathe from a gas cylinder to get their breathing back to normal.



The gas used contains oxygen and 5% carbon dioxide.

This is a higher percentage of carbon dioxide than in air.

Suggest why this high percentage of carbon dioxide is used to help get their breathing back to normal.

.....

.....

.....

..... [2]

[Total: 6]

3 This question is about digestion.

(a) Food molecules need to be digested.

Explain why.

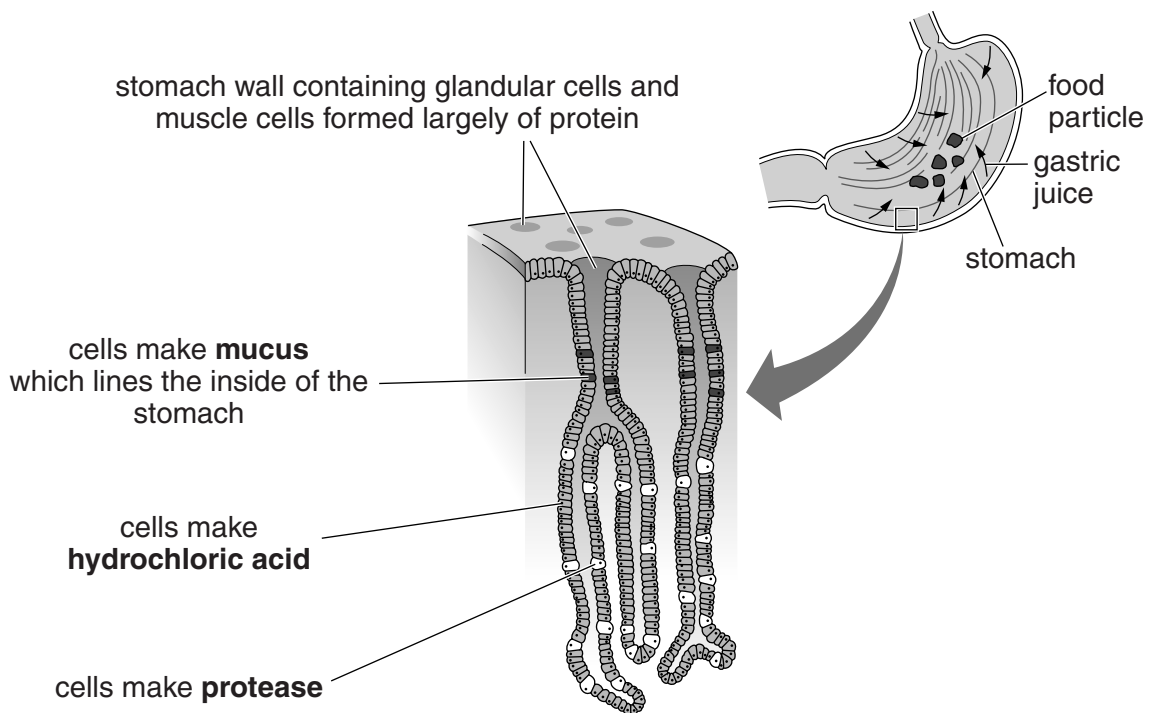
.....

.....

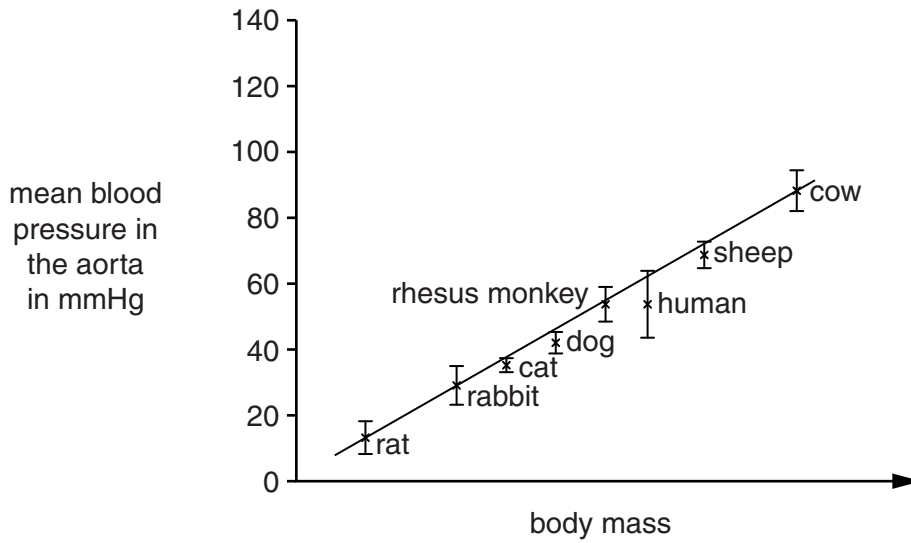
..... [2]

(b) The lining of the stomach makes a liquid called gastric juice.

This contains protease, hydrochloric acid and mucus.



4 The graph shows the mean (average) blood pressure in the aorta (main artery) of different sized newborn mammals.



(a) (i) Suggest a reason for the pattern shown in the graph.

.....
..... [1]

(ii) Newborn humans have a mean pressure of 55 mmHg in the aorta.

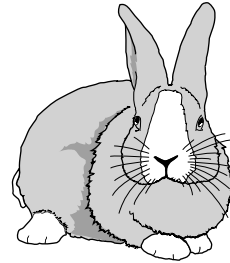
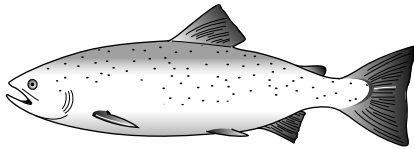
What else can be concluded from the graph about the blood pressure of newborn humans?

.....
..... [1]

(b) Scientists compare the blood pressure of a fish with a mammal.

They measure the blood pressure leaving and entering the heart in a trout and in a rabbit.

Here are their results.



Trout	
Mean blood pressure leaving heart (aorta)	= 40 mmHg
entering heart (vena cava)	= 2 mmHg

Rabbit	
Mean blood pressure leaving heart (aorta)	= 36 mmHg
entering heart (vena cava)	= 6 mmHg

(i) The blood pressure in the rabbit drops by 83.3% between the aorta and the vena cava.

The percentage drop in blood pressure in the trout is greater.

Calculate the percentage drop in blood pressure in the trout.

..... % [2]

(ii) The trout and the rabbit are the same mass.

Explain why the pressure drop is greater in the trout (fish) than in the rabbit (mammal).

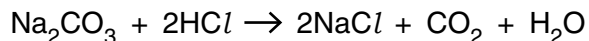
.....
.....
.....
..... [2]

[Total: 6]

SECTION B – Module C5

- 5 Sodium carbonate, Na_2CO_3 , reacts with hydrochloric acid, HCl .

Look at the balanced symbol equation for this reaction.



- (a) Sarah neutralises 0.2 moles of hydrochloric acid with sodium carbonate.

- (i) How many moles of carbon dioxide are made?

..... [1]

- (ii) Calculate the volume of carbon dioxide made at room temperature and pressure.

One mole of carbon dioxide has a volume of 24 dm^3 at room temperature and pressure.

.....

.....

volume of carbon dioxide dm^3 [1]

- (b) David dissolves 53 g of sodium carbonate, Na_2CO_3 , in water to make 2000 cm^3 of solution.

Show that the concentration of sodium carbonate solution is 0.25 mol/dm^3 .

The relative atomic mass, A_r , of Na = 23, of C = 12 and of O = 16.

.....

.....

.....

.....

.....

..... [2]

- (c) Calcium carbonate also reacts with dilute hydrochloric acid.

What is the formula for calcium carbonate?

..... [1]

[Total: 5]

6 This question is about acids.

(a) Sulfuric acid, H_2SO_4 , ionises in water.

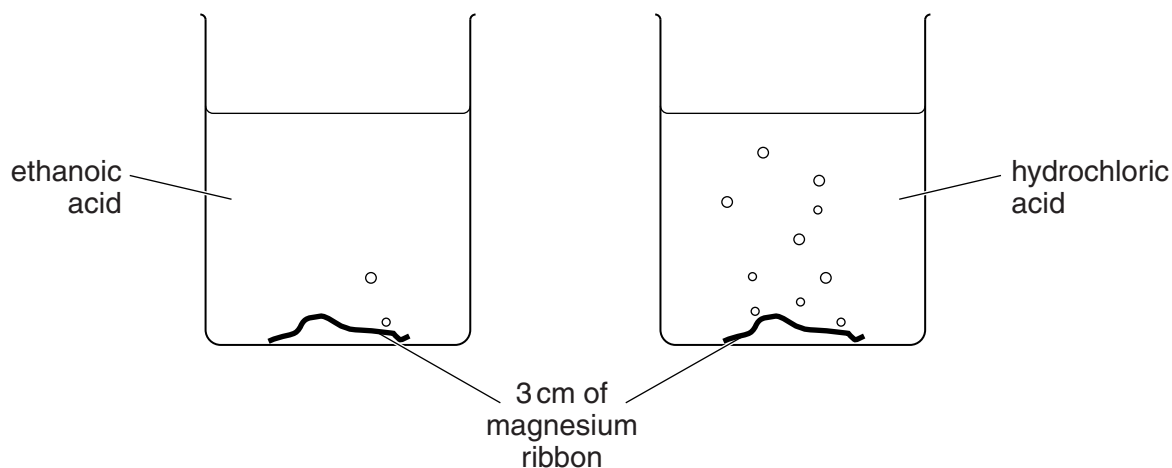
Write down the formula of one ion made when sulfuric acid ionises in water.

..... [1]

(b) Julie puts a 3cm length of magnesium into dilute ethanoic acid.

She puts another 3cm length of magnesium into dilute hydrochloric acid.

She uses the same volume and concentration of both acids.



(i) Both acids make the same volume of hydrogen gas.

Explain why.

.....
 [1]

(ii) Ethanoic acid reacts much more slowly than hydrochloric acid.

Explain why using the reacting particle model.

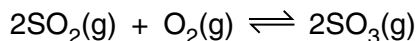
.....

 [3]

[Total: 5]

7 Sulfuric acid is made by the Contact Process.

One of the reactions used in the Contact Process is reversible.



A catalyst, vanadium(V) oxide, is used in this reaction.

(a) Write down **two other** conditions used for this reversible reaction in the Contact Process.

.....
.....
..... [2]

(b) What effect does using a catalyst have on the **rate of reaction** and on the **position of equilibrium** in this reversible reaction?

rate of reaction
.....
position of equilibrium
..... [2]

[Total: 4]

13
BLANK PAGE

Question 8 begins on page 14
PLEASE DO NOT WRITE ON THIS PAGE

(b) A precipitate is formed immediately when barium chloride solution is added to the river water.

This is because precipitation reactions are extremely fast.

Explain why precipitation reactions are extremely fast.

.....
.....
..... [2]

[Total: 8]

9 Nick is eating a potato snack.

He looks at the label on the packet.

The label shows Guideline Daily Amounts, GDA, and some other nutritional information.

	Amount in 100 g of snack	Adult GDA value	Percentage of GDA in 100 g of snack (%)
energy	1910 kJ	8300 kJ	23
protein	4.5 g	45 g	10
carbohydrate	61.8 g	230 g	27
fat	14.0 g	70 g	20
fibre	3.2 g	24 g	13
sodium	1.27 g	2.4 g	53

(a) Nick eats 400g of the potato snack in one day.

Which of the following will be over the GDA?

Choose from

energy

protein

carbohydrate

fat

fibre

sodium

answer [1]

(b) All the sodium in the potato snack comes from salt.

Salt is sodium chloride, NaCl.

What is the mass of salt in 100g of the potato snack?

The relative atomic mass, A_r , of Na = 23 and of Cl = 35.5.

.....

mass of salt = g [2]

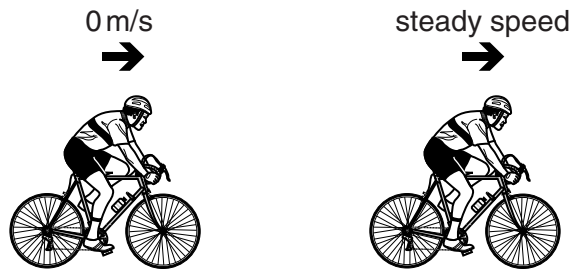
17
BLANK PAGE

Question 10 begins on page 18
PLEASE DO NOT WRITE ON THIS PAGE

SECTION C – Module P5

10 Bradley trains on his bike. His sports coach takes measurements of his performance.

(a) Bradley starts from rest and accelerates at 0.25 m/s^2 for 52 s to reach a steady speed.



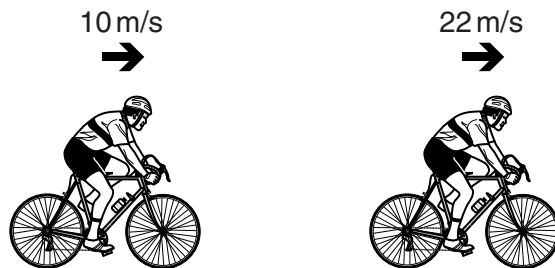
Calculate this steady speed.

.....
.....

answer m/s [2]

(b) Bradley reaches the top of a hill. His speed at the top of the hill is 10 m/s.

He accelerates steadily down the hill for 320 m and increases his speed to 22 m/s.



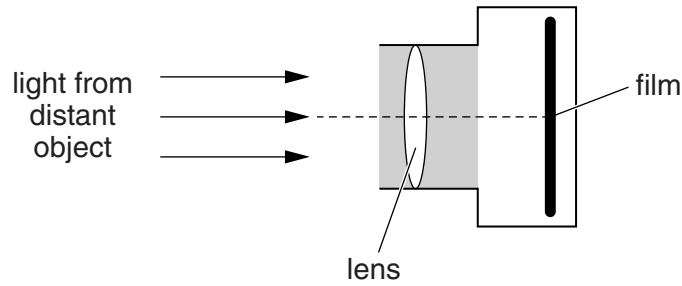
Calculate the time it takes to travel the 320 m.

.....
.....

answer s [2]

11 Ellie’s camera uses a convex lens to focus an image onto a film.

Look at the diagram of her simple camera with a single lens.



(a) Complete the diagram to show how an image is produced on the film. [1]

(b) Ellie’s camera produces an image on the film.

What **type** of image does the camera produce on the film?

..... [1]

(c) Ellie points the camera at a **nearby** insect.

The image of the insect is not in focus.

Describe what must happen to the lens in the camera to focus the image of the insect.

.....
 [1]

(d) Ellie takes a picture of the insect.

The insect is 5 mm long.

The image produced on the film is 12.5 mm long.

Calculate the image **magnification**.

.....

magnification = [2]

[Total: 5]

13 This question is about refractive index and using gemstones to make jewellery.

Look at the table about the refractive index for different materials.

Sample	Substance	State	Refractive Index
A	vacuum	space	1.00
B	ice	solid	1.31
C	fluorite	solid	1.43
D	quartz	solid	1.54
E	tourmaline	solid	1.62
F	cubic zirconia	solid	2.18
G	diamond	solid	2.42

(a) In a vacuum, light travels at 3.00×10^8 m/s. Calculate the speed of light in ice.

.....

.....

.....

.....

answer m/s [2]

(b) When making jewellery the refractive index of a gemstone is important.

Inside a gemstone the light hitting a surface can be:

- totally internally reflected
- refracted to the outside.

Substances **F** and **G** are used to make gemstones.

The light entering the gemstones tends to be ‘trapped’ inside the stone for many reflections before being refracted to the outside. This makes the gemstone sparkle.

The refractive index of **F** and the refractive index of **G** are both suitable for making jewellery.

Use the data to suggest why.

.....

.....

..... [2]

(c) When white light leaves a gemstone it disperses into many colours.

The amount of dispersion depends on the material used.

Look at the information in the table for two different materials used to make gemstones.

Colour of light	Refractive index for the gemstone	
	Diamond	Quartz
Red	2.40735	1.524312
Yellow	2.41734	1.527982
Green	2.42694	1.531372
Violet	2.46476	1.544684

The ‘dispersion coefficient’ is a measure of how much light disperses in a gemstone and therefore how much it sparkles with different colours.

Look at the equation for dispersion coefficient.

Dispersion coefficient = refractive index in violet light – refractive index in red light

A jeweller thinks that diamonds disperse light by nearly three times that of quartz.

Use the information in the table to show the jeweller is correct.

.....

.....

.....

.....

.....

..... [2]

[Total: 6]

END OF QUESTION PAPER



Copyright Information

OCR is committed to seeking permission to reproduce all third-party content that it uses in its assessment materials. OCR has attempted to identify and contact all copyright holders whose work is used in this paper. To avoid the issue of disclosure of answer-related information to candidates, all copyright acknowledgements are reproduced in the OCR Copyright Acknowledgements Booklet. This is produced for each series of examinations and is freely available to download from our public website (www.ocr.org.uk) after the live examination series.

If OCR has unwittingly failed to correctly acknowledge or clear any third-party content in this assessment material, OCR will be happy to correct its mistake at the earliest possible opportunity.

For queries or further information please contact the Copyright Team, First Floor, 9 Hills Road, Cambridge CB2 1GE.

OCR is part of the Cambridge Assessment Group; Cambridge Assessment is the brand name of University of Cambridge Local Examinations Syndicate (UCLES), which is itself a department of the University of Cambridge.

The Periodic Table of the Elements

	1	2	3	4	5	6	7	0	
	7 Li lithium 3	9 Be beryllium 4		11 B boron 5	12 C carbon 6	14 N nitrogen 7	16 O oxygen 8	19 F fluorine 9	20 Ne neon 10
	23 Na sodium 11	24 Mg magnesium 12		27 Al aluminium 13	28 Si silicon 14	31 P phosphorus 15	32 S sulfur 16	35.5 Cl chlorine 17	40 Ar argon 18
	39 K potassium 19	40 Ca calcium 20		70 Ga gallium 31	73 Ge germanium 32	75 As arsenic 33	79 Se selenium 34	80 Br bromine 35	84 Kr krypton 36
	85 Rb rubidium 37	88 Sr strontium 38		115 In indium 49	119 Sn tin 50	122 Sb antimony 51	128 Te tellurium 52	127 I iodine 53	131 Xe xenon 54
	133 Cs caesium 55	137 Ba barium 56		204 Tl thallium 81	207 Pb lead 82	209 Bi bismuth 83	[209] Po polonium 84	[210] At astatine 85	[222] Rn radon 86
	[223] Fr francium 87	[226] Ra radium 88		201 Hg mercury 80	201 Hg mercury 80	197 Au gold 79	[272] Rg roentgenium 111		
				59 Ni nickel 28	59 Ni nickel 28	59 Co cobalt 27	59 Ni nickel 28		
				56 Fe iron 26	56 Fe iron 26	56 Fe iron 26	56 Fe iron 26		
				55 Mn manganese 25	55 Mn manganese 25	55 Mn manganese 25	55 Mn manganese 25		
				48 Ti titanium 22	48 Ti titanium 22	48 Ti titanium 22	48 Ti titanium 22		
				91 Zr zirconium 40	91 Zr zirconium 40	91 Zr zirconium 40	91 Zr zirconium 40		
				93 Nb niobium 41	93 Nb niobium 41	93 Nb niobium 41	93 Nb niobium 41		
				181 Ta tantalum 73	181 Ta tantalum 73	181 Ta tantalum 73	181 Ta tantalum 73		
				178 Hf hafnium 72	178 Hf hafnium 72	178 Hf hafnium 72	178 Hf hafnium 72		
				139 La* lanthanum 57	139 La* lanthanum 57	139 La* lanthanum 57	139 La* lanthanum 57		
				[227] Ac* actinium 89	[227] Ac* actinium 89	[227] Ac* actinium 89	[227] Ac* actinium 89		
				[262] Db dubnium 105	[262] Db dubnium 105	[262] Db dubnium 105	[262] Db dubnium 105		
				[266] Sg seaborgium 106	[266] Sg seaborgium 106	[266] Sg seaborgium 106	[266] Sg seaborgium 106		
				[264] Bh bohrium 107	[264] Bh bohrium 107	[264] Bh bohrium 107	[264] Bh bohrium 107		
				[277] Hs hassium 108	[277] Hs hassium 108	[277] Hs hassium 108	[277] Hs hassium 108		
				[268] Mt meitnerium 109	[268] Mt meitnerium 109	[268] Mt meitnerium 109	[268] Mt meitnerium 109		
				[271] Ds darmstadtium 110	[271] Ds darmstadtium 110	[271] Ds darmstadtium 110	[271] Ds darmstadtium 110		
				192 Ir iridium 77	192 Ir iridium 77	192 Ir iridium 77	192 Ir iridium 77		
				195 Pt platinum 78	195 Pt platinum 78	195 Pt platinum 78	195 Pt platinum 78		
				106 Pd palladium 46	106 Pd palladium 46	106 Pd palladium 46	106 Pd palladium 46		
				103 Rh rhodium 45	103 Rh rhodium 45	103 Rh rhodium 45	103 Rh rhodium 45		
				101 Ru ruthenium 44	101 Ru ruthenium 44	101 Ru ruthenium 44	101 Ru ruthenium 44		
				63.5 Cu copper 29	63.5 Cu copper 29	63.5 Cu copper 29	63.5 Cu copper 29		
				65 Zn zinc 30	65 Zn zinc 30	65 Zn zinc 30	65 Zn zinc 30		
				108 Ag silver 47	108 Ag silver 47	108 Ag silver 47	108 Ag silver 47		
				112 Cd cadmium 48	112 Cd cadmium 48	112 Cd cadmium 48	112 Cd cadmium 48		
				115 In indium 49	115 In indium 49	115 In indium 49	115 In indium 49		
				119 Sn tin 50	119 Sn tin 50	119 Sn tin 50	119 Sn tin 50		
				122 Sb antimony 51	122 Sb antimony 51	122 Sb antimony 51	122 Sb antimony 51		
				128 Te tellurium 52	128 Te tellurium 52	128 Te tellurium 52	128 Te tellurium 52		
				79 Se selenium 34	79 Se selenium 34	79 Se selenium 34	79 Se selenium 34		
				80 Br bromine 35	80 Br bromine 35	80 Br bromine 35	80 Br bromine 35		
				75 As arsenic 33	75 As arsenic 33	75 As arsenic 33	75 As arsenic 33		
				32 S sulfur 16	32 S sulfur 16	32 S sulfur 16	32 S sulfur 16		
				31 P phosphorus 15	31 P phosphorus 15	31 P phosphorus 15	31 P phosphorus 15		
				16 O oxygen 8	16 O oxygen 8	16 O oxygen 8	16 O oxygen 8		
				14 N nitrogen 7	14 N nitrogen 7	14 N nitrogen 7	14 N nitrogen 7		
				9 F fluorine 9	9 F fluorine 9	9 F fluorine 9	9 F fluorine 9		
				4 He helium 2	4 He helium 2	4 He helium 2	4 He helium 2		

1 H hydrogen 1

Key
relative atomic mass
atomic symbol
name
atomic (proton) number

Elements with atomic numbers 112-116 have been reported but not fully authenticated

* The lanthanoids (atomic numbers 58-71) and the actinoids (atomic numbers 90-103) have been omitted.

The relative atomic masses of copper and chlorine have not been rounded to the nearest whole number.