

**Tuesday 13 May 2014 – Afternoon**

**GCSE GEOGRAPHY A**

**A731/01 Contemporary Themes in Geography (Foundation Tier)**

Candidates answer on the Question Paper.

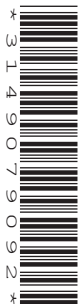
**OCR supplied materials:**

- An Insert (A731/01/02/1 – inserted)

**Other materials required:**

None

**Duration:** 1 hour 45 minutes



Candidate forename		Candidate surname	
-----------------------	--	----------------------	--

Centre number						Candidate number				
---------------	--	--	--	--	--	------------------	--	--	--	--

**INSTRUCTIONS TO CANDIDATES**

- The Insert will be found inside this document.
- Write your name, centre number and candidate number in the boxes above. Please write clearly and in capital letters.
- Use black ink. HB pencil may be used for graphs and diagrams only.
- Answer **all** the questions.
- Read each question carefully. Make sure you know what you have to do before starting your answer.
- Write your answer to each question in the space provided. If additional space is required, you should use the lined pages at the end of this booklet. The question number(s) must be clearly shown.
- Do **not** write in the bar codes.

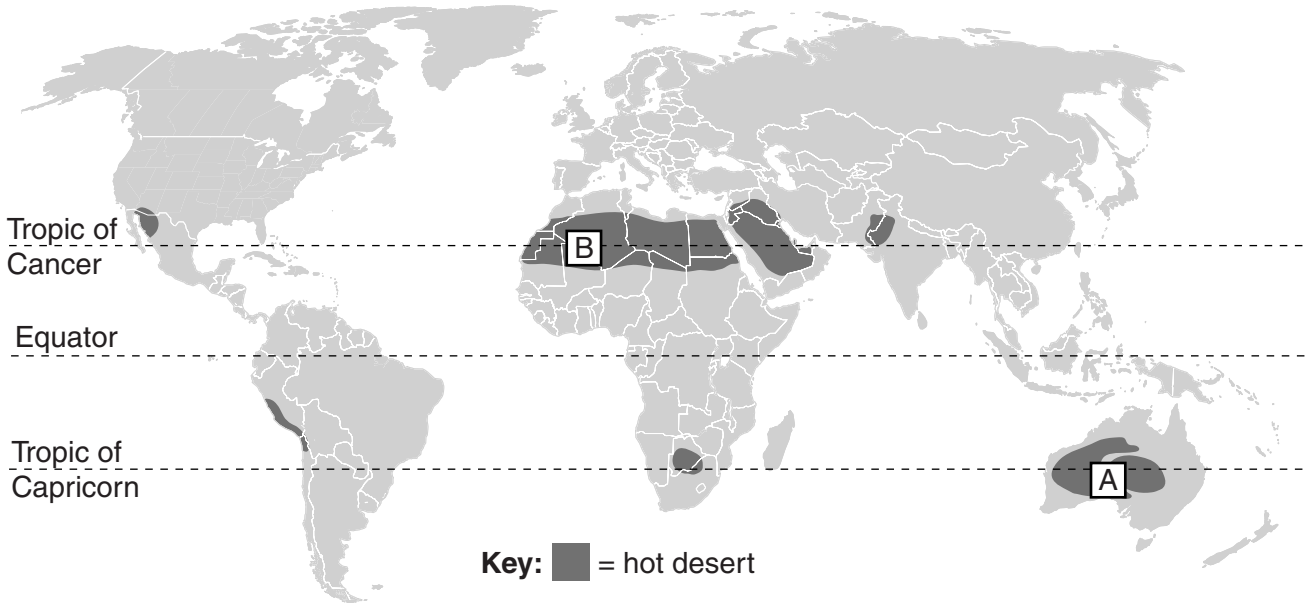
**INFORMATION FOR CANDIDATES**

- The number of marks is given in brackets [ ] at the end of each question or part question.
- The total number of marks for this paper is **112**.
- You will be awarded marks in questions 1(e), 2(a), 2(e) and 4(b)(ii) for the quality of written communication of your answer. Questions marked with a pencil (✎) will carry 3 additional marks for spelling, punctuation and grammar.
- This document consists of **20** pages. Any blank pages are indicated.

Answer **all** the questions.

**Extreme Environments**

1 (a) Study the map below which shows hot deserts of the world.



(i) Name the **two** hot deserts A and B marked on the map. Choose your answers from the list below.

- Sahara                      Australian                      Kalahari                      Thar**

Desert A .....

Desert B .....

**[2]**

(ii) Which **one** of the following statements best describes the location of hot desert areas?

Tick (✓) the correct answer.

Within 5 degrees north and south of the Equator

On and around the Tropics of Cancer and Capricorn

Mainly in the southern hemisphere

**[1]**

(iii) Give **two** reasons for the **location** of hot deserts.

.....  
.....  
.....  
..... [2]

(b) Describe the rainfall and temperature of a hot desert climate.

Rainfall .....

.....  
.....  
.....

Temperature .....

.....  
.....  
..... [4]

(c) Study Fig. 1a in the separate Insert.

This shows a hot desert landscape.  
Complete the following sentences to explain how a mesa is formed. Choose from the alternatives below each sentence.

(i) A mesa has been formed by weathering and .....  
**deposition                  erosion                  volcanic activity** [1]

(ii) Areas of ..... surrounding the mesa have been weathered and removed.  
**softer rock                  sand dune                  harder rock** [1]

(iii) Over time, a mesa may become much smaller. It is then known as a  
.....  
**yardang                  wadi                  butte** [1]

(d) Explain how the process of exfoliation changes rocks in a hot desert.

.....  
.....  
.....  
.....  
.....  
..... [3]

(e) Study Figs 1b and 1c in the separate Insert, which show two different ways that hot deserts are used by people. Describe the impacts people have on hot deserts for both of the uses shown.

.....  
.....  
.....  
.....  
.....  
.....  
.....  
.....  
.....  
.....  
.....  
.....  
.....  
.....  
.....  
..... [6]

 Spelling, punctuation and grammar [3]



(b) Explain how plate movement creates fold mountains. You may use a diagram to help you.

.....

.....

.....

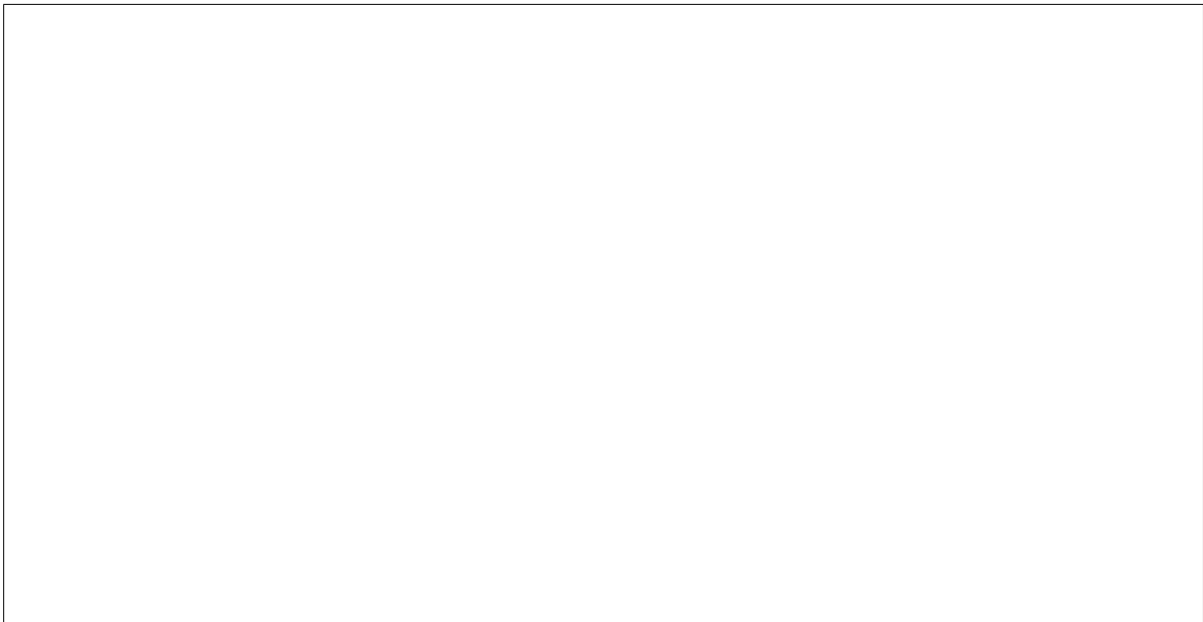
.....

.....

.....

.....

.....



[4]

(c) Study Fig. 3 in the separate Insert.

What does Fig. 3 suggest about the experiences of people on mountain expeditions?

.....

.....

.....

..... [2]

(d) State **one** natural resource found in mountains and explain how it can be used.

Name of resource .....

.....

.....

.....

.....

..... [2]

(e) Describe the impacts of tourism on **one** mountain area you have studied.

Include both **positive** and **negative** impacts.

Named mountain environment .....

.....

.....

.....

.....

.....

.....

.....

.....

.....

.....

.....

.....

.....

.....

.....

.....

.....

.....

.....

.....

..... [6]

 Spelling, punctuation and grammar [3]

The Global Citizen

3 Study Fig. 4 in the separate Insert, which is about McDonald's, a multinational company.

(a) (i) Define the term 'multinational company'.

.....  
..... [1]

(ii) Explain why there are more McDonald's restaurants in MEDCs than LEDCs.

.....  
.....  
.....  
..... [2]

(iii) Suggest **two** reasons why more McDonald's restaurants might open in LEDCs in the future.

.....  
.....  
.....  
..... [2]



(b) You will have studied one named product.

State the product you have studied .....

(i) Describe the global pattern of **production** of this product. Explain why this pattern exists.

.....  
.....  
.....  
.....  
.....  
..... [3]

(ii) Describe the global pattern of **consumption** of this product. Explain why this pattern exists.

.....  
.....  
.....  
.....  
.....  
..... [3]

(iii) Describe the employment conditions for workers who produce your chosen product.

.....  
.....  
.....  
.....  
.....  
.....  
.....  
.....  
.....  
..... [4]

(c) If you were an **ethical consumer** how might this affect the choice of food products you would buy?

.....

.....

.....

.....

.....

.....

.....

.....

.....

..... [4]

4 (a) Study Figs 5a and 5b in the separate Insert.

(i) The sentence below describes the changing pattern of energy use in the USA and China.

Circle the correct answer to complete the sentence.

Since 2005, energy use in China has **increased / stayed the same / decreased.**

[1]

(ii) What does the cartoon in Fig. 5b tell us about China's energy use?

.....

.....

.....

..... [2]

(b) You will have studied a named energy issue.


State the energy issue you have studied .....

(i) Describe how this has been managed.

.....  
.....  
.....  
..... [2]

(ii) Suggest what the likely impacts of this energy issue may be on people and on the natural environment in the **future**.

.....  
.....  
.....  
.....  
.....  
.....  
.....  
.....  
.....  
.....  
.....  
.....  
.....  
.....  
.....  
.....  
.....  
..... [6]

 Spelling, punctuation and grammar [3]

**Similarities and Differences in Settlements and Population**

- 5 (a) Complete the diagram below to show settlement type in order of size by adding the words from the list below in the correct places.



[2]

(b) Study Fig. 6 in the separate Insert.

(i) Define the term 'mega city'.

.....  
..... [1]

(ii) Describe **one** change shown in the size of the world's mega cities between 1980 and 2010. Use data in your answer.

.....  
.....  
.....  
..... [2]

(iii) Suggest **one** reason why this change may have occurred.

.....  
.....  
.....  
..... [2]



(e) Suggest why the growth of mega cities might create problems for governments.

.....

.....

.....

..... [2]



6 (a) Study Fig. 7 in the separate Insert, which shows two population pyramids for China.

(i) Select (✓) the **two** statements from the list below which are true for China in 2014.

Birth rates have fallen in the last 20 years.

There are more males than females aged 80 and over.

There are more people of working age than under 15 years.

China has a youthful population structure.

There are more females than males aged 14 and under.

[2]

(ii) Suggest how China's population structure is likely to change by 2050. Refer to the pyramids in Fig. 7.

.....

.....

.....

..... [2]

(b) The impacts of population change can have advantages and disadvantages. For a recent population issue you have studied, describe **two** likely impacts of the change on the availability of services and resources.

Population issue .....

Impact on services .....

.....

.....

.....

Impact on resources .....

.....

.....

.....

[4]

(c) Using **one** example of a national population policy, describe how it has influenced population change.

Name of country .....

Example of national population policy .....

.....

.....

.....

.....

.....

.....

.....

.....

.....

.....

.....

[4]

END OF QUESTION PAPER

**ADDITIONAL ANSWER SPACE**

If additional answer space is required, you should use the following lined page(s). The question number(s) must be clearly shown in the margins.

A large area of lined paper for writing answers. It features a vertical margin line on the left side and horizontal dotted lines for writing. The lines are evenly spaced and extend across the width of the page.

A large rectangular area with a solid vertical line on the left side and horizontal dotted lines extending across the page, providing a space for writing answers.



**Copyright Information**

OCR is committed to seeking permission to reproduce all third-party content that it uses in its assessment materials. OCR has attempted to identify and contact all copyright holders whose work is used in this paper. To avoid the issue of disclosure of answer-related information to candidates, all copyright acknowledgements are reproduced in the OCR Copyright Acknowledgements Booklet. This is produced for each series of examinations and is freely available to download from our public website ([www.ocr.org.uk](http://www.ocr.org.uk)) after the live examination series.

If OCR has unwittingly failed to correctly acknowledge or clear any third-party content in this assessment material, OCR will be happy to correct its mistake at the earliest possible opportunity.

For queries or further information please contact the Copyright Team, First Floor, 9 Hills Road, Cambridge CB2 1GE.

OCR is part of the Cambridge Assessment Group; Cambridge Assessment is the brand name of University of Cambridge Local Examinations Syndicate (UCLES), which is itself a department of the University of Cambridge.