



**Tuesday 24 June 2014 – Morning**

**GCSE HEALTH AND SOCIAL CARE**

**A914/02** Safeguarding and Protecting Individuals

Candidates answer on the Question Paper.

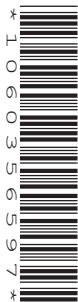
**OCR supplied materials:**

None

**Other materials required:**

None

**Duration:** 1 hour



Candidate forename		Candidate surname	
-----------------------	--	----------------------	--

Centre number						Candidate number				
---------------	--	--	--	--	--	------------------	--	--	--	--

**INSTRUCTIONS TO CANDIDATES**

- Write your name, centre number and candidate number in the boxes above. Please write clearly and in capital letters.
- Use black ink. Pencil may be used for graphs and diagrams only.
- Read each question carefully. Make sure you know what you have to do before starting your answer.
- Write your answer to each question in the space provided. If additional space is required, you should use the lined pages at the end of this booklet. The question number(s) must be clearly shown.
- Answer **all** the questions.
- Do **not** write in the bar codes.

**INFORMATION FOR CANDIDATES**

- The number of marks is given in brackets [ ] at the end of each question or part question.
- Quality of Written Communication will be assessed in questions marked with an asterisk(\*).
- The total number of marks for this paper is **60**.
- This document consists of **16** pages. Any blank pages are indicated.

Answer **all** the questions.

1 Identify **three** key signs of a person having an asthma attack.

1 .....

2 .....

3 .....

[3]

2 'ABC' is a basic procedure of first aid.

What is meant by the initials 'ABC'?

A .....

B .....

C .....

[3]



5 Describe what is meant by the following terms.

Disinfecting .....

.....

.....

.....

Sterilising .....

.....

.....

..... [4]

6 Identify **four** ways of general cleaning a community lounge in a care setting.

1 .....

2 .....

3 .....

4 ..... [4]

7 Give **four** good food hygiene practices in food preparation areas.

1 .....

2 .....

3 .....

4 ..... [4]

8 State **one** piece of legislation that aims to prevent the spread of infection.

..... [1]

9 Identify **two** different groups of vulnerable people who may need to be safeguarded.

1 .....

2 ..... [2]



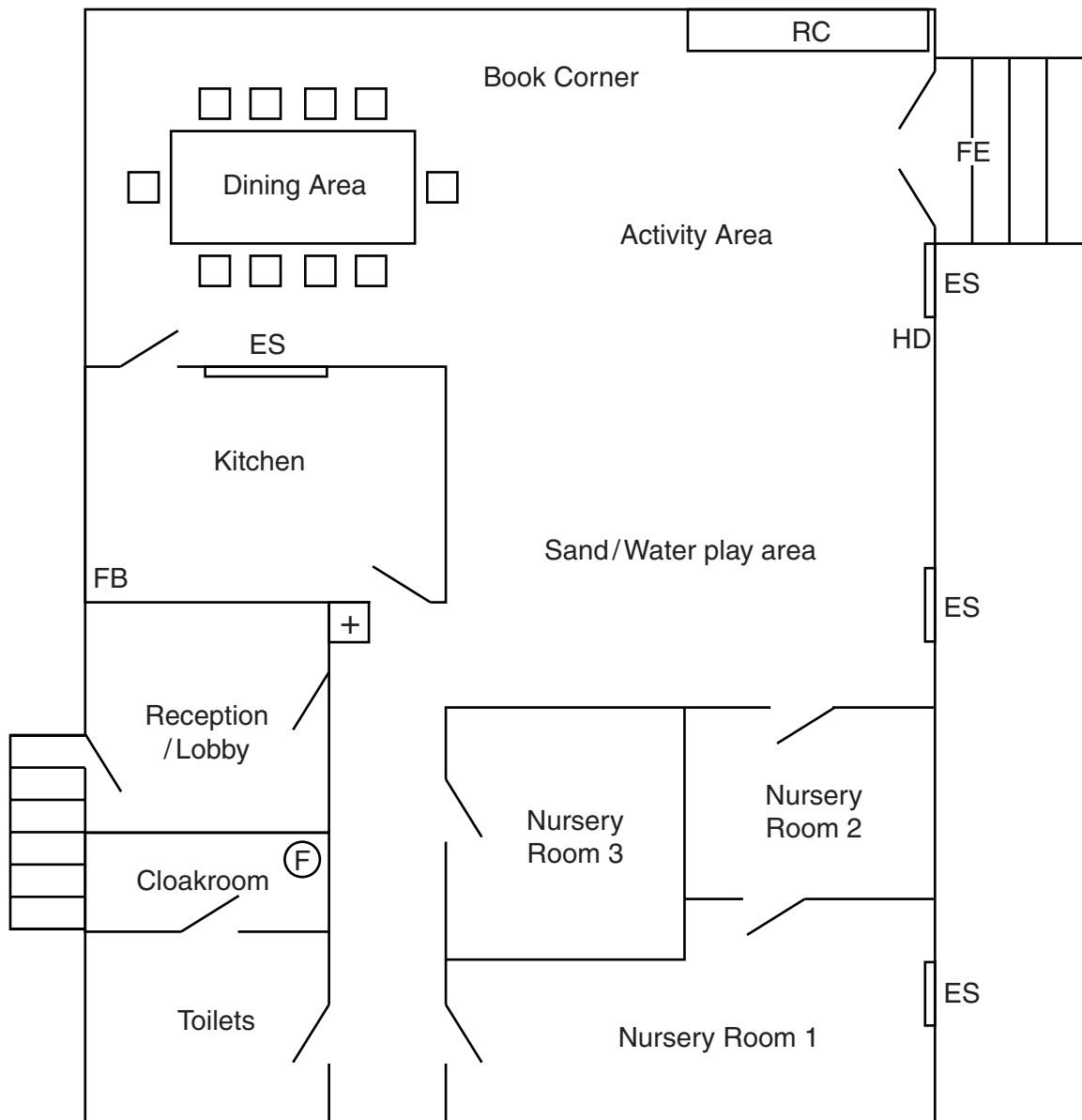


**BLANK PAGE**

**Question 14 begins on page 8**

**PLEASE DO NOT WRITE ON THIS PAGE**

Plan of Day Nursery



Key

- |    |                    |  |                   |
|----|--------------------|--|-------------------|
| RC | Resource Cupboard  |  | Door              |
| FE | Fire Exit          |  | Steps             |
| ES | Electric Sockets   |  | Fire Extinguisher |
| FB | Fire Blanket       |  | First Aid Box     |
| HD | Hot Drinks Machine |  | Chairs            |





**ADDITIONAL ANSWER SPACE**

If additional answer space is required, you should use the following lined page(s). The question number(s) must be clearly shown.

A large area of lined paper for writing answers. It consists of a vertical solid line on the left side and horizontal dotted lines extending across the page, creating a grid for writing.







**14**  
**BLANK PAGE**

**PLEASE DO NOT WRITE ON THIS PAGE**

15  
BLANK PAGE

PLEASE DO NOT WRITE ON THIS PAGE

**PLEASE DO NOT WRITE ON THIS PAGE**



**Copyright Information**

OCR is committed to seeking permission to reproduce all third-party content that it uses in its assessment materials. OCR has attempted to identify and contact all copyright holders whose work is used in this paper. To avoid the issue of disclosure of answer-related information to candidates, all copyright acknowledgements are reproduced in the OCR Copyright Acknowledgements Booklet. This is produced for each series of examinations and is freely available to download from our public website ([www.ocr.org.uk](http://www.ocr.org.uk)) after the live examination series.

If OCR has unwittingly failed to correctly acknowledge or clear any third-party content in this assessment material, OCR will be happy to correct its mistake at the earliest possible opportunity.

For queries or further information please contact the Copyright Team, First Floor, 9 Hills Road, Cambridge CB2 1GE.

OCR is part of the Cambridge Assessment Group; Cambridge Assessment is the brand name of University of Cambridge Local Examinations Syndicate (UCLES), which is itself a department of the University of Cambridge.