

AS AND A LEVEL

Teacher Guide

ART AND DESIGN

H200-H206, H600-H606

For first teaching in 2015

Suggested teaching timeline

AS and A LEVEL ART AND DESIGN

Suggested teaching timeline

OCR AS – With only **one** portfolio and **no Externally set task** to build, this really is giving teachers and students room to breathe to build skills for the full A Level.

AS Level Year 12/First Year Teaching

SEPTEMBER

OCTOBER

NOVEMBER

DECEMBER

Beginning to build Skills Knowledge and Understanding to chosen Specialist titles and areas of study – choosing a related study project and portfolio planning.

JANUARY

FEBRUARY

MARCH

APRIL

MAY

Begin to produce a portfolio project focused around a centre set theme.
Continue to develop to A Level.

MAY

JUNE

Marking/submitting marks to OCR **31 May**. Continue to develop Skills knowledge and understanding.
Visiting moderation takes place from **1st June**.

NB students may now re-use their AS submission or any work developed in the first year, if appropriate, in their submission for the full A Level in any component/area (Ofqual approved).

A Level Year 12/First Year Teaching

SEPTEMBER

OCTOBER

NOVEMBER

DECEMBER

Beginning to build Skills
Knowledge and Understanding
to chosen Specialist titles and
areas of study – choosing
a related study project and
portfolio planning.

JANUARY

FEBRUARY

MARCH

APRIL

MAY

Continue to develop to A Level
Continuing with related study
and Personal Investigation.

MAY

JUNE

Continue to develop Skills,
Knowledge and Understanding.

A Level Year 13/Second Year Teaching

SEPTEMBER

OCTOBER

NOVEMBER

DECEMBER

Continue to develop to A Level
Continuing with related study
and Personal Investigation.

JANUARY

FEBRUARY

MARCH

APRIL

MAY

1st February Early Release
paper.
Centres set own date for
development and the 15 hour
supervised time period.
Continue to develop to A Level.

MAY

JUNE

Marking/submitting marks to
OCR 31 May.
Visiting moderation takes place
from 1st June.

Contents and Assessment of the new AS and A Level Art and Design Specifications

Content overview

There are seven qualifications available for study.

The available specialisms are:

- Art, Craft and Design (H200/H600)
- Fine Art (H201/H601)
- Graphic Communication (H201/H602)
- Photography (H203/H603)
- Textile Design (H204/H604)
- Three-Dimensional Design (H205/H605)
- Critical and Contextual Studies (H206/H606).

The full A Level has two components:

Component 01: Personal investigation

Learners should produce two elements:

1. A portfolio of practical work showing their personal response to either a starting point, brief, scenario or stimulus, devised and provided by the learner or centre
2. A related study: an extended response of a guided minimum of 1000 words.

Assessment overview

01: Personal investigation

120 marks

Non exam assessment (internally assessed and externally moderated)

60%
of total level

Component 02: Externally set task

The early release paper will be issued on **1 February** and will provide learners with a number of themes, each with a range of written and visual starting points, briefs and stimuli.

- A response should be based on one of these options. Preparation time and the supervised time period is set by the centre.

Assessment overview

02: Externally set task (15 hours)

80 marks

Non exam assessment (internally assessed and externally moderated)

40%
of total level



The AS Specifications

The AS Level is now a separate qualification. There are seven qualifications available for study as the full A Level.

The AS has ONE component: Portfolio Task

Learners should produce a portfolio of practical work showing their personal response to either a starting point, brief, scenario or stimulus, devised and provided by the learner or centre.

Assessment overview

AS Portfolio task

80 marks

Non exam assessment (internally assessed and externally moderated)

100%
of total level

Suggest a resource

OCR is constantly developing high quality resources for all qualifications to fully support teachers offering high quality teaching and learning to students. These will be made available via the Art and Design pages of our website. Suggest a resource to us using our [online form](#) or drop a note to the Subject Specialist via resources.feedback@ocr.org.uk. We would love to hear from you!



Art, Craft and Design – Combined Specialisms (H200/H600)

In Art, Craft and Design – Combined Specialisms learners must work in two or more specialisms from those listed below. Learners may work in an area or areas of study within and/or across specialisms.

Fine Art (H201/H601)

Learners are required to choose one or more area(s) of study, such as:

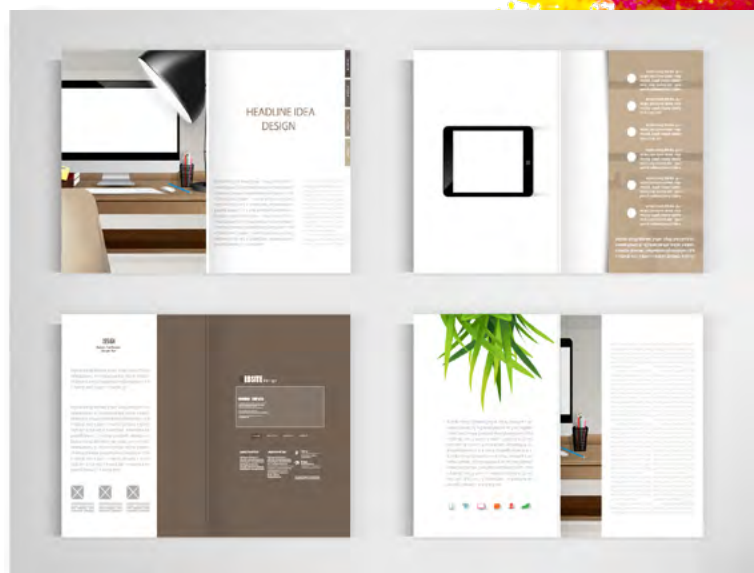
- Portraiture
- Landscape
- Still life
- Human form
- Abstraction
- Experimental imagery
- Narrative
- Installation
- Working in a genre.



Graphic Communication (H202/H602)

Learners are required to choose one or more area(s) of study, such as:

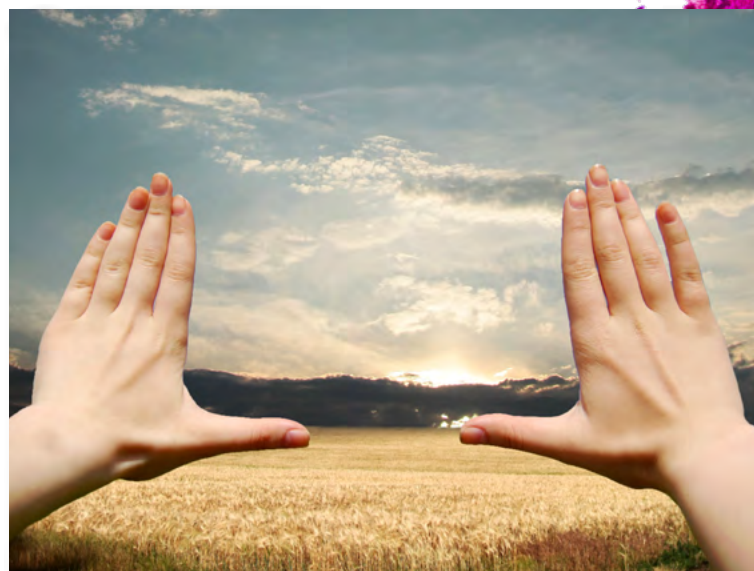
- Image and typography
- Illustration
- Advertising
- Layout design
- Packaging
- Editorial design
- Experimental imagery
- Signage
- Abstract approaches.



Photography (H203/H603)

Learners are required to choose one or more area(s) of study, such as:

- Portraiture
- Landscape photography
- Commercial photography
- Still life photography
- Documentary photography
- Experimental imagery
- Editorial photography
- Photographic installation
- The photographic process
- Moving image
- Animation.



Textile Design (H204/H604)

Learners are required to choose one or more area(s) of study, such as:

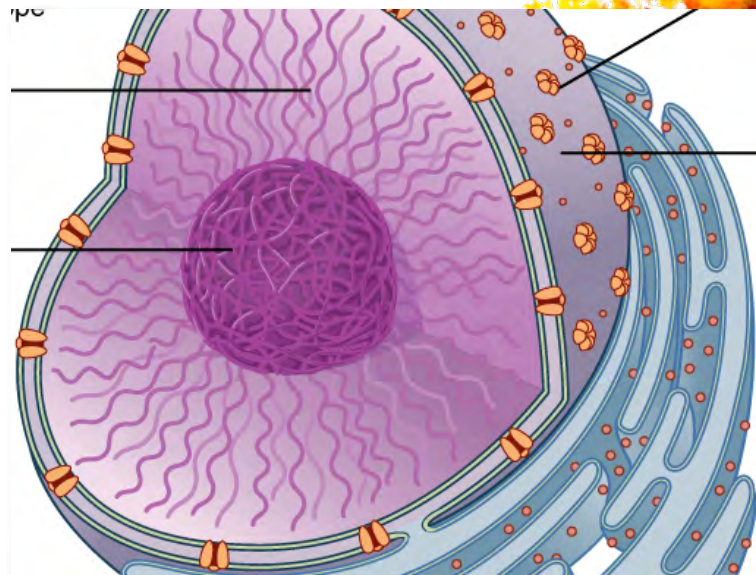
- Garments/Fashion
- Accessories
- Soft furnishings
- Printed and/or dyed textiles
- Constructed textiles
- Textile installation
- Expressive textiles
- Digital textiles.



Three-Dimensional Design (H205/H605)

Learners are required to choose one or more area(s) of study, such as:

- Craft or commercial ceramics
- Commercial sculptures or sculptural commissions
- Commercial three-dimensional design, working for a client to create a three-dimensional item such as an item of jewellery
- Design and/or construction for television, games or film
- Stage, environmental or architectural design and/or construction
- Experimental three-dimensional design (construction/montage/assemblage)
- Body ornament (jewellery, fashion accessories, body painting and film or TV prosthetics)
- Product design and realisation
- Constructions in a range of materials.



Critical and Contextual Studies (H206/H606)

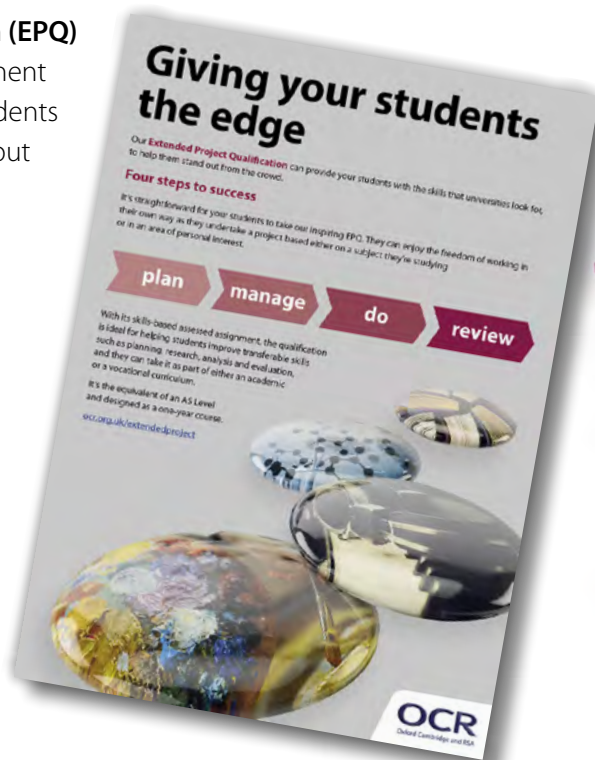
Learners are required to choose one or more area(s) of study, such as:

- Fine art and sculpture
- Design
- Craft
- Art theory
- The human form
- Landscape and natural forms
- Still life and designed objects
- Architecture and the built environment
- Art movements, styles and genres
- Curating exhibitions
- Art management and art in the community
- Cultural representations within art and design
- Multimedia, emerging technologies and their use in art.
- The photographic process
- Moving image
- Animation.



OCR News *extra*

OCR offer an **Extended Project Qualification (EPQ)** which can be used alongside the one component AS or used over the Second year for those students who wish to continue a creative subject area but without the pressure of a full Art and Design A Level. For further information please visit the [OCR website](https://www.ocr.org.uk/extended-project).



We also offer a suite of vocational qualifications which are modular and offer a different approach for teaching and learning for art and design students. For further information please visit the [OCR website](https://www.ocr.org.uk/vocational).



Alternatively please contact OCR directly through our Customer Contact Centre who will be happy to support you. Telephone: 02223 553998.

Visit our [web page](https://www.ocr.org.uk) for more details and sign up for [updates](#).

Need to get in touch?

If you ever have any questions about OCR qualifications or services (including administration, logistics and teaching) please feel free to get in touch with our Customer Support Centre.

Call us on
01223 553998

Alternatively, you can email us on
support@ocr.org.uk

For more information visit

 **ocr.org.uk/qualifications/resource-finder/**

 **ocr.org.uk**

 **/ocrexams**

 **/ocrexams**

 **/company/ocr**

 **/ocrexams**

We really value your feedback

Click to send us an autogenerated email about this resource. Add comments if you want to. Let us know how we can improve this resource or what else you need. Your email address will not be used or shared for any marketing purposes.



I like this



I dislike this



**Cambridge
Assessment**

OCR is part of Cambridge Assessment, a department of the University of Cambridge.

For staff training purposes and as part of our quality assurance programme your call may be recorded or monitored. © OCR 2021 Oxford Cambridge and RSA Examinations is a Company Limited by Guarantee. Registered in England. Registered office The Triangle Building, Shaftesbury Road, Cambridge, CB2 8EA. Registered company number 3484466. OCR is an exempt charity.

OCR operates academic and vocational qualifications regulated by Ofqual, Qualifications Wales and CCEA as listed in their qualifications registers including A Levels, GCSEs, Cambridge Technicals and Cambridge Nationals.

OCR provides resources to help you deliver our qualifications. These resources do not represent any particular teaching method we expect you to use. We update our resources regularly and aim to make sure content is accurate but please check the OCR website so that you have the most up to date version. OCR cannot be held responsible for any errors or omissions in these resources.

Though we make every effort to check our resources, there may be contradictions between published support and the specification, so it is important that you always use information in the latest specification. We indicate any specification changes within the document itself, change the version number and provide a summary of the changes. If you do notice a discrepancy between the specification and a resource, please [contact us](#).

You can copy and distribute this resource freely if you keep the OCR logo and this small print intact and you acknowledge OCR as the originator of the resource.

OCR acknowledges the use of the following content: Pencils: Andrey Emelyanenko/Shutterstock.com, paint: Didecs/Shutterstock.com, month labels: Guz Anna/Shutterstock.com, bulbs: Sergey Nivens/Shutterstock.com, Field: Masson/Shutterstock.com, graphic layout: wanpatsorn/Shutterstock.com, painting: Eugene Ivanov/Shutterstock.com, box man: Simon Bratt/Shutterstock.com, 3D image: jl661227/Shutterstock.com, fabric: Natalya Prokopenko/Shutterstock.com, paint splat: Vikpit/shutterstock.com

Whether you already offer OCR qualifications, are new to OCR or are thinking about switching, you can request more information using our [Expression of Interest form](#).

Please [get in touch](#) if you want to discuss the accessibility of resources we offer to support you in delivering our qualifications.