



Oxford Cambridge and RSA

Wednesday 20 May 2015 – Morning

AS GCE HEALTH AND SOCIAL CARE

F913/01 Health and Safety in Care Settings

Candidates answer on the Question Paper.

OCR supplied materials:

None

Other materials required:

None

Duration: 1 hour 30 minutes



Candidate forename		Candidate surname	
-----------------------	--	----------------------	--

Centre number						Candidate number				
---------------	--	--	--	--	--	------------------	--	--	--	--

INSTRUCTIONS TO CANDIDATES

- Write your name, centre number and candidate number in the boxes above. Please write clearly and in capital letters.
- Use black ink. HB pencil may be used for graphs and diagrams only.
- Answer **all** the questions.
- Read each question carefully. Make sure you know what you have to do before starting your answer.
- Write your answer to each question in the space provided. If additional space is required, you should use the lined pages at the end of this booklet. The question number(s) must be clearly shown.
- Do **not** write in the bar codes.

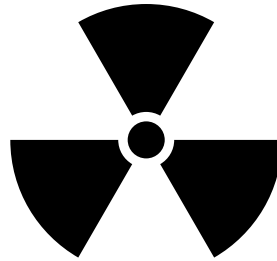
INFORMATION FOR CANDIDATES

- The number of marks is given in brackets [] at the end of each question or part question.
- The total number of marks for this paper is **100**.
- The quality of written communication will be assessed in your answers to questions marked with an asterisk (*).
- This document consists of **24** pages. Any blank pages are indicated.

1 Both of these warning signs are often seen in hospital.



A



B

(a) Identify each of the two signs.

A

B

[2]

(b) For each sign explain the risk of harm to staff that is likely to be caused by the hazard concerned.

A

.....

.....

.....

B

.....

.....

.....

[4]

(c) Explain **one** measure which should be put in place for each danger to reduce the risk of harm.

A

.....

.....

.....

B

.....

.....

.....

[4]

(d) Identify the legislation that controls the use of warning signs such as those shown.

.....

..... [1]

(e) (i) Give the **full** name of the organisation responsible for enforcing this legislation.

.....

..... [1]

(ii) State **three** ways in which this organisation could enforce legislation.

.....

.....

.....

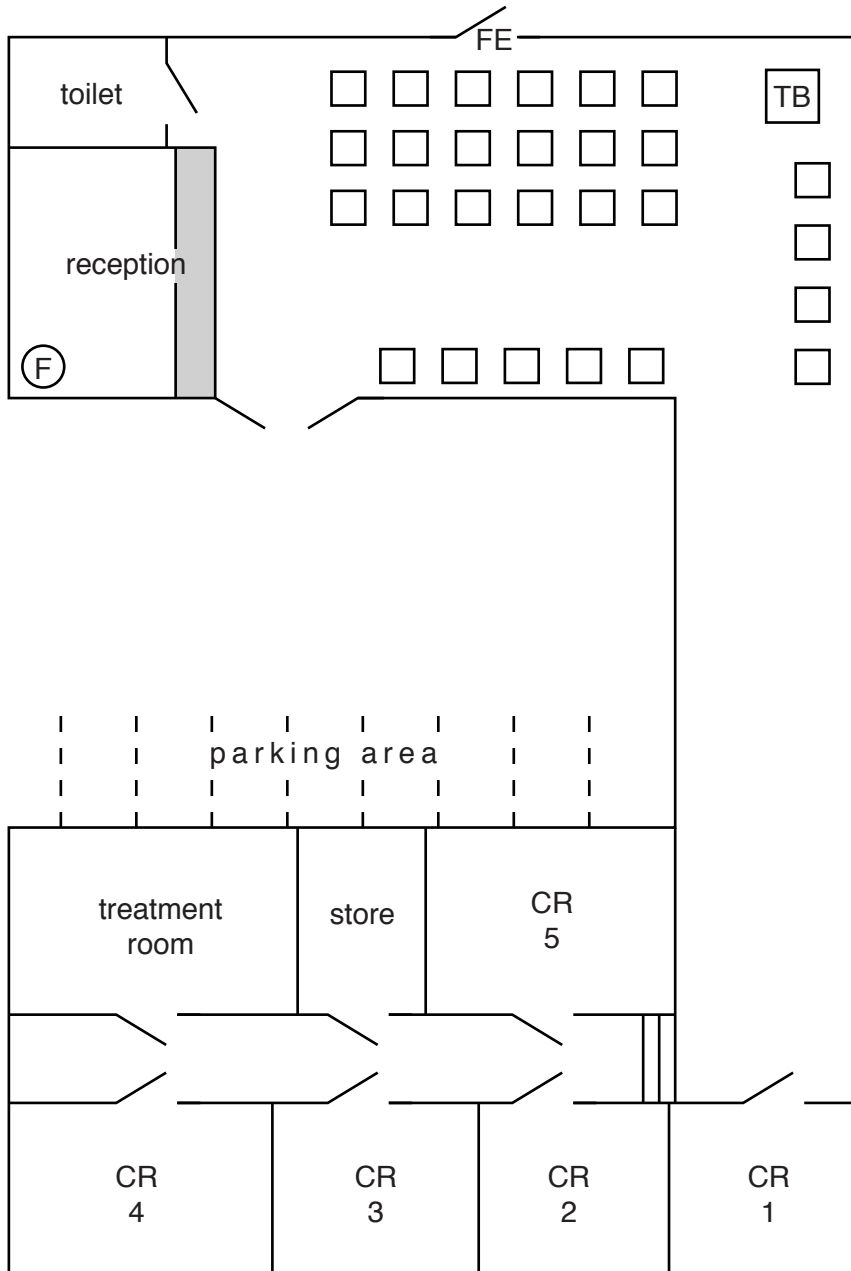
.....

.....

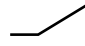



..... [3]

[TOTAL: 15 Marks]

Plan of a Medical Centre



Key

- | | | | |
|---|-------------------|--|-----------------|
|  | door | CR | consulting room |
|  | chair | FE | fire exit |
|  | fire extinguisher | TB | toy box |
| | |  | steps |

(a)* Carry out the first three stages of a risk assessment for the Medical Centre based on the features shown on the plan. [15]

.....

.....

.....

A series of 25 horizontal dotted lines spanning the width of the page, providing a guide for handwriting practice.

4 (a) Give the full name of **two** pieces of legislation controlling the moving and handling of people who use services.

.....
..... [2]

(b)* Describe how legislation controlling moving and handling aims to reduce the risk of harm to a care worker.

.....
.....
.....
.....
.....
.....
.....
.....
.....
.....
.....
.....
.....
.....
.....
.....
.....
.....
.....
.....
..... [6]

(c)* Explain how the safety of the person being moved can be ensured by the actions of the care practitioner.

.....
.....
.....
.....
.....
.....
.....
.....
.....
.....
.....
.....
.....
.....
.....
.....
.....
.....
.....
.....
.....
..... [6]

- 5 (a)* Discuss the benefits to staff of holding regular Fire Evacuation Procedures (Fire Drills) in a care setting.

.....
.....
.....
.....
.....
.....
.....
.....
.....
.....
.....
.....
.....
.....
.....
.....
.....
.....
.....
.....
.....
.....
.....
.....

..... [7]

ADDITIONAL ANSWER SPACE

If additional answer space is required, you should use the following lined page(s). The question number(s) must be clearly shown in the margins.

This block contains a large area of lined paper for writing answers. It features a vertical margin line on the left side and horizontal dotted lines for writing. The lines are evenly spaced and extend across the width of the page.

A vertical solid line is positioned on the left side of the page. From this line, 25 horizontal dotted lines extend across the page, creating a series of rows for writing.

A vertical solid line is positioned on the left side of the page. From this line, 25 horizontal dotted lines extend across the page, creating a series of rows for writing.

A vertical solid line is positioned on the left side of the page. To its right, there are 25 horizontal dotted lines extending across the width of the page, providing a guide for handwriting practice.

A vertical solid line is positioned on the left side of the page. From this line, 25 horizontal dotted lines extend across the page, creating a series of rows for writing.

A vertical solid line is positioned on the left side of the page. From this line, 25 horizontal dotted lines extend across the page, creating a series of rows for writing.

21
BLANK PAGE

PLEASE DO NOT WRITE ON THIS PAGE

PLEASE DO NOT WRITE ON THIS PAGE

PLEASE DO NOT WRITE ON THIS PAGE

PLEASE DO NOT WRITE ON THIS PAGE



Copyright Information

OCR is committed to seeking permission to reproduce all third-party content that it uses in its assessment materials. OCR has attempted to identify and contact all copyright holders whose work is used in this paper. To avoid the issue of disclosure of answer-related information to candidates, all copyright acknowledgements are reproduced in the OCR Copyright Acknowledgements Booklet. This is produced for each series of examinations and is freely available to download from our public website (www.ocr.org.uk) after the live examination series.

If OCR has unwittingly failed to correctly acknowledge or clear any third-party content in this assessment material, OCR will be happy to correct its mistake at the earliest possible opportunity.

For queries or further information please contact the Copyright Team, First Floor, 9 Hills Road, Cambridge CB2 1GE.

OCR is part of the Cambridge Assessment Group; Cambridge Assessment is the brand name of University of Cambridge Local Examinations Syndicate (UCLES), which is itself a department of the University of Cambridge.