

**Friday 5 June 2015 – Afternoon**

**LEVEL 2 CAMBRIDGE NATIONAL IN SCIENCE**

**R072/02** How scientific ideas have developed

Candidates answer on the Question Paper.  
A calculator may be used for this paper.

**OCR supplied materials:**

- Insert (R072/02/I – inserted)

**Other materials required:**

- Pencil
- Ruler (cm/mm)

**Duration: 1 hour**



Candidate forename		Candidate surname	
-----------------------	--	----------------------	--

Centre number						Candidate number				
---------------	--	--	--	--	--	------------------	--	--	--	--

**INSTRUCTIONS TO CANDIDATES**

- The Insert will be found inside this document.
- Write your name, centre number and candidate number in the boxes above. Please write clearly and in capital letters.
- Use black ink. HB pencil may be used for graphs and diagrams only.
- Answer **all** the questions.
- Read each question carefully. Make sure you know what you have to do before starting your answer.
- Write your answer to each question in the space provided. Additional paper may be used if necessary but you must clearly show your candidate number, centre number and question number(s).
- Do **not** write in the bar codes.

**INFORMATION FOR CANDIDATES**

- The number of marks is given in brackets [ ] at the end of each question or part question.
- The total number of marks for this paper is **60**.
- Your quality of written communication is assessed in questions marked with a pencil (✎).
- This document consists of **12** pages. Any blank pages are indicated.

Answer **all** the questions.

**1 This question is based on the case study ‘Communicating with waves’.**

(a) Describe what happens to air molecules when a sound wave moves through the air.

.....  
..... [1]

(b) (i) What is the mean time measured during **Experiment 1**?

Show your working.

.....seconds [2]

(ii) Sachin suggests that the results might be closer together if he stood further from the wall.

Explain why Sachin is correct.

.....  
..... [1]

(iii) The recording made in **Experiment 2** shows that the sound of the echo was recorded 0.29 seconds after the sound of the clap.

Use the formula below to work out the speed of sound in air.

$$\text{Speed of sound} = \frac{\text{total distance travelled}}{\text{time taken}}$$

Show your working.

..... m/s [1]

- (c) (i) In 1831 Faraday made observations about electricity and magnetism. He published his observations for other scientists.

Why was this important?

.....  
.....  
..... [2]

- (ii) James Clerk Maxwell showed that Faraday’s electromagnetic waves travel through space at 300,000 km/s.

Why did this suggest that visible light was also an electromagnetic wave?

.....  
..... [1]

- (d) Suggest why it was useful to discover that radio waves could be reflected by part of the atmosphere.

.....  
..... [1]

- (e) Ultraviolet is another type of electromagnetic wave. It has more energy than visible light.

What can you deduce about the wavelength of ultraviolet compared to visible light?

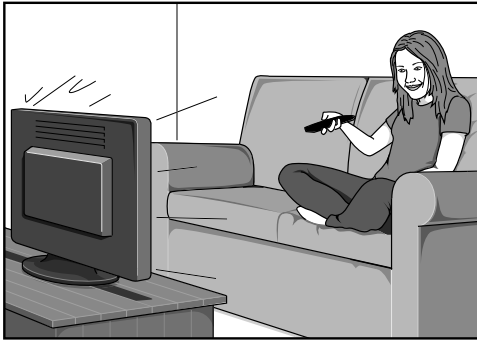
..... [1]

- (f) Two students are using their mobile phones to call different friends. They use the same network in the same place, at the same time.

Explain how each of them can make a separate phone call.

.....  
.....  
..... [2]

(g) Freda uses a remote control to change the channel on her TV.



Suggest how the remote control can work when she points it at the ceiling instead of at the TV.

.....  
..... [1]

(h) Freda's computer can receive data from all over the world through her internet connection. The data travels along optical fibres.

Explain why the strength of the signal is not lost when it travels long distances along an optical fibre.

.....  
..... [2]

[Total: 15]

2 About 1000 years ago, Avicenna knew that some of his patients produced urine which contained more sugar than usual.  
He tried treating his patients by adding various types of seeds to their diet.

He gave some of his patients a special diet which included fenugreek seeds. Their urine contained noticeably less sugar for the next few hours. However, the next day, their urine was exactly the same as before.

(a) Suggest why Avicenna only gave **some** of his patients the fenugreek seeds in their diet.

.....  
.....  
..... [2]

(b) Avicenna tested the urine for sugar by tasting it.  
Nowadays we use a dipstick which changes colour depending on the amount of sugar present in the urine.

Explain why using a dipstick improves the quality of the data.

.....  
.....  
..... [2]

(c) We now know that too much sugar in the urine is a symptom of diabetes.

Dan has diabetes. His blood sugar level an hour after a meal is usually between 15 and 20mmol/L.  
An hour after eating fenugreek seeds in a meal his blood sugar level is 15mmol/L.

Dan is not sure if the seeds have made a difference to his blood sugar level.

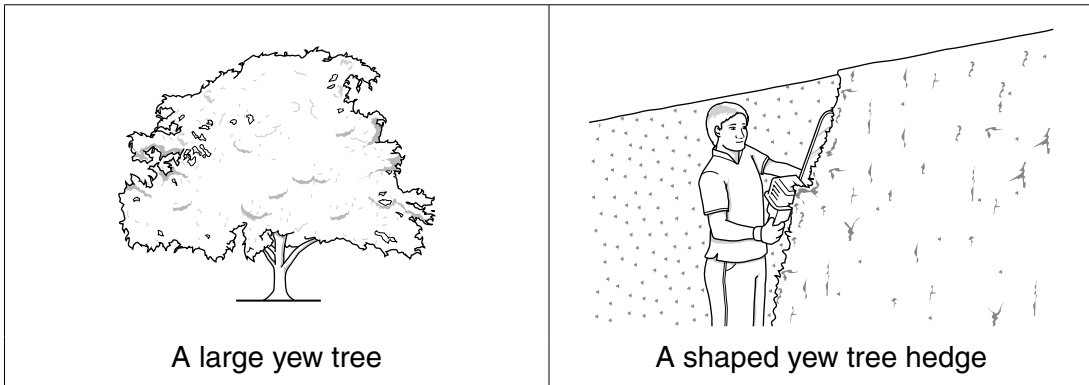
Why is Dan not sure and what further evidence would he need to make a conclusion?

 *The quality of written communication will be assessed in your answer.*

.....  
.....  
.....  
.....  
..... [4]

[Total: 8]

- 3 Yew trees grow in many churchyards. They can grow for hundreds of years. If yew trees are left to grow naturally they can become large trees. However, they can be cut regularly to make a shaped hedge.



- (a) The scientific name for a yew tree is *Taxus baccata*.

Complete these sentences:

This system of having two-part scientific names is called the ..... system.

The genus of the yew tree is .....

The species of the yew tree is .....

[3]

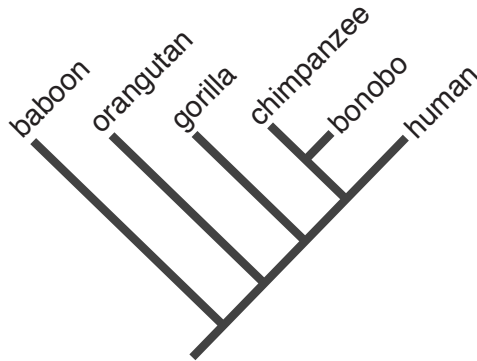
- (b) Alex wants to grow a shaped yew tree **hedge** from seeds.

Explain why he can use seeds from a large yew tree to make a shaped yew tree hedge.

.....

..... [1]

(c) Modern classification systems use Cladistics diagrams (cladograms). This diagram shows how different types of animal may be related.



(i) Which animal shares the most characteristics with the **bonobo** in this diagram?

..... [1]

(ii) The Cladistics diagram shows the stages in development of physical features in the evolution of some animals.

How does the diagram show that humans and gorillas have some physical features that are the same and some that are different?

.....  
.....  
..... [2]

(iii) Since it has been possible to analyse DNA, some cladograms have had to be redesigned. Suggest why.

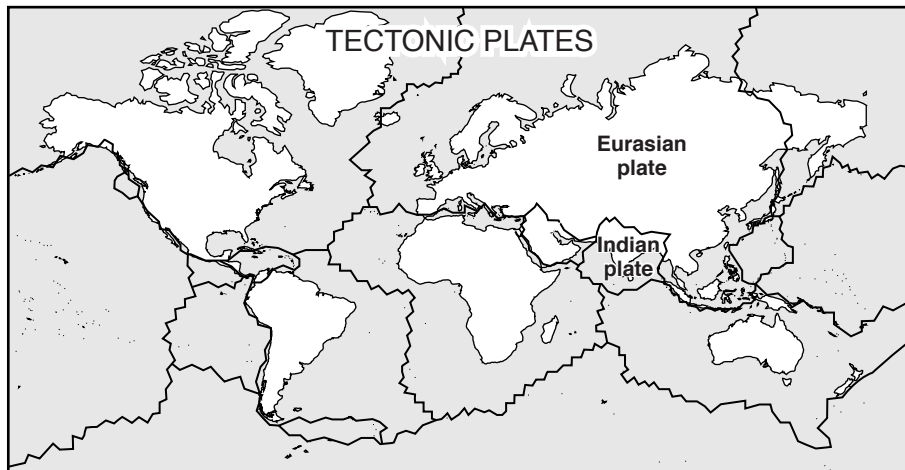
.....  
.....  
..... [2]

[Total: 9]





(b) Scientists now believe that the surface of the Earth is made of tectonic plates which can move.



Modern measurements show that:

- Many tectonic plates move at about 2 cm/year.
- The Indian plate moved at about 20 cm/year until it collided with the Eurasian plate.
- The Indian plate is now moving at about 5 cm/year.
- The Indian plate is about half as thick as the other tectonic plates.

(i) Using this data decide whether each statement is **True**, **False** or you **Cannot tell**.

Put a tick (✓) in **one** box for each statement.

Statement	True	False	Cannot tell
Before the Indian plate collided it travelled ten times faster than most other plates.			
The Indian plate moved faster as a result of its collision with the Eurasian plate.			
The Indian plate is thicker than other plates.			
The Eurasian plate was not moving when hit by the Indian plate.			
All the plates now move more slowly than in the past.			

[4]

(ii) Suggest why Wegener did not use these measurements to support his theory.

.....  
 ..... [1]

[Total: 11]

5 (a) The diagrams below show two different ways of showing the structure of a DNA molecule.

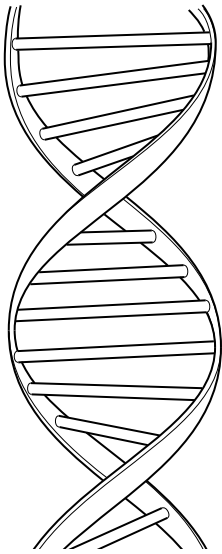


Diagram 1

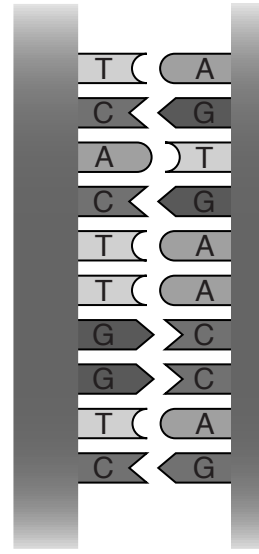


Diagram 2

Explain why **both** diagrams are needed to describe the structure of DNA.

.....

.....

.....

.....

.....

..... [4]



6 Kuda measures his body temperature and finds that it is almost 2°C higher than normal body temperature.

His brain sends impulses to his skin to reduce his temperature.

(a) Explain how changes to the blood supply in his skin can reduce his temperature.

.....  
.....  
..... [3]

(b) Explain why this process is called a **negative feedback system**.

.....  
..... [2]

(c) The next day, Kuda’s temperature is normal.

Kuda says that God has made his temperature lower.

Explain why scientists **cannot** find out if he is right.

.....  
..... [2]

[Total: 7]

**END OF QUESTION PAPER**



**Copyright Information**

OCR is committed to seeking permission to reproduce all third-party content that it uses in its assessment materials. OCR has attempted to identify and contact all copyright holders whose work is used in this paper. To avoid the issue of disclosure of answer-related information to candidates, all copyright acknowledgements are reproduced in the OCR Copyright Acknowledgements Booklet. This is produced for each series of examinations and is freely available to download from our public website ([www.ocr.org.uk](http://www.ocr.org.uk)) after the live examination series.

If OCR has unwittingly failed to correctly acknowledge or clear any third-party content in this assessment material, OCR will be happy to correct its mistake at the earliest possible opportunity.

For queries or further information please contact the Copyright Team, First Floor, 9 Hills Road, Cambridge CB2 1GE.

OCR is part of the Cambridge Assessment Group; Cambridge Assessment is the brand name of University of Cambridge Local Examinations Syndicate (UCLES), which is itself a department of the University of Cambridge.