



Oxford Cambridge and RSA

**Monday 11 May 2015 – Afternoon**

**GCSE CITIZENSHIP STUDIES**

**A342/02** Identity, Democracy and Justice – Understanding our Role as Citizens



Candidates answer on the Question Paper.

**OCR supplied materials:**  
None

**Other materials required:**  
None

**Duration:** 1 hour



Candidate forename		Candidate surname	
--------------------	--	-------------------	--

Centre number						Candidate number				
---------------	--	--	--	--	--	------------------	--	--	--	--

**INSTRUCTIONS TO CANDIDATES**

- Write your name, centre number and candidate number in the boxes above. Please write clearly and in capital letters.
- Use black ink. HB pencil may be used for graphs and diagrams only.
- Answer **all** the questions.
- Read each question carefully. Make sure you know what you have to do before starting your answer.
- Write your answer to each question in the space provided. Additional paper may be used if necessary but you must clearly show your candidate number, centre number and question number(s).
- Do **not** write in the bar codes.

**INFORMATION FOR CANDIDATES**

- The number of marks is given in brackets [ ] at the end of each question or part question.
- The total number of marks for this paper is **40**.
- The quality of written communication will be taken into account in marking your answer to the question marked with an asterisk (\*).
- This document consists of **12** pages. Any blank pages are indicated.

## SECTION A

Answer **all** questions.

Spend about **30 minutes** on this section.

For Questions 1–5, put a **ring** around the number of the response (i, ii, iii, or iv) that matches the question.

- 1 What is the main reason that people in the United Kingdom (UK) may have a **complex sense of identity**?
- (i) People in the UK often have dual nationality.
  - (ii) People in the UK may have been born before 1960.
  - (iii) People in the UK sometimes have family members from mixed cultural and religious backgrounds.
  - (iv) People in the UK do not have to carry identity cards. [1]
- 2 What is the best description of a **political party**?
- (i) A group of people with similar ideas who campaign in elections.
  - (ii) A campaign group that puts pressure on government.
  - (iii) A way of making sure that laws are passed.
  - (iv) A group of people who are interested in politics but are also impartial. [1]
- 3 Which term best describes the job of a **solicitor**?
- (i) Upholding the rule of law.
  - (ii) Providing legal advice and support.
  - (iii) To make sure a trial in court runs smoothly.
  - (iv) To make judgements on applications for Legal Aid. [1]
- 4 What is meant by the term **referendum**?
- (i) Referring a law back to the courts for a decision.
  - (ii) A debate in Parliament to settle differences between two sides.
  - (iii) A type of democracy found mainly in the European Union (EU).
  - (iv) A vote on a single issue in which all citizens can take part. [1]
- 5 Which term best fits the following description: 'Developed and developing countries that have historical ties to the United Kingdom (UK)'?
- (i) The Commonwealth.
  - (ii) European Union (EU).
  - (iii) United Nations (UN).
  - (iv) North Atlantic Treaty Organization (NATO). [1]

6 State **one** reason why a pressure group is important in a democracy.  
..... [1]

7 State **one** international organisation that protects human rights.  
..... [1]

8 State **one** main religious group in the United Kingdom (UK).  
..... [1]

9 State **one** way that citizens can actively support the justice system.  
..... [1]

10 State **one** responsibility of a Member of Parliament (MP).  
..... [1]

11 Explain why the different rights that people may have may sometimes conflict with each other.  
In your answer you should:

- Describe examples of people's rights.
- Explain why rights might conflict.

..... [4]

Study both graphs in Document 1 and answer questions 12, 13 and 14 that follow.

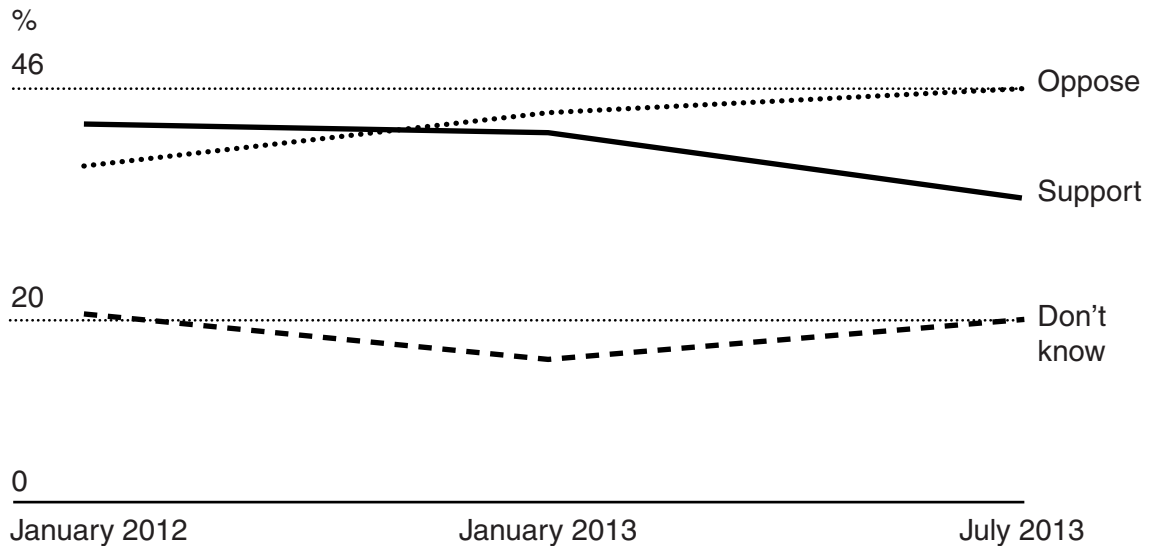
### Document 1

**YouGov opinion polls measuring support for a high speed rail link (HS2) – summer 2013.**

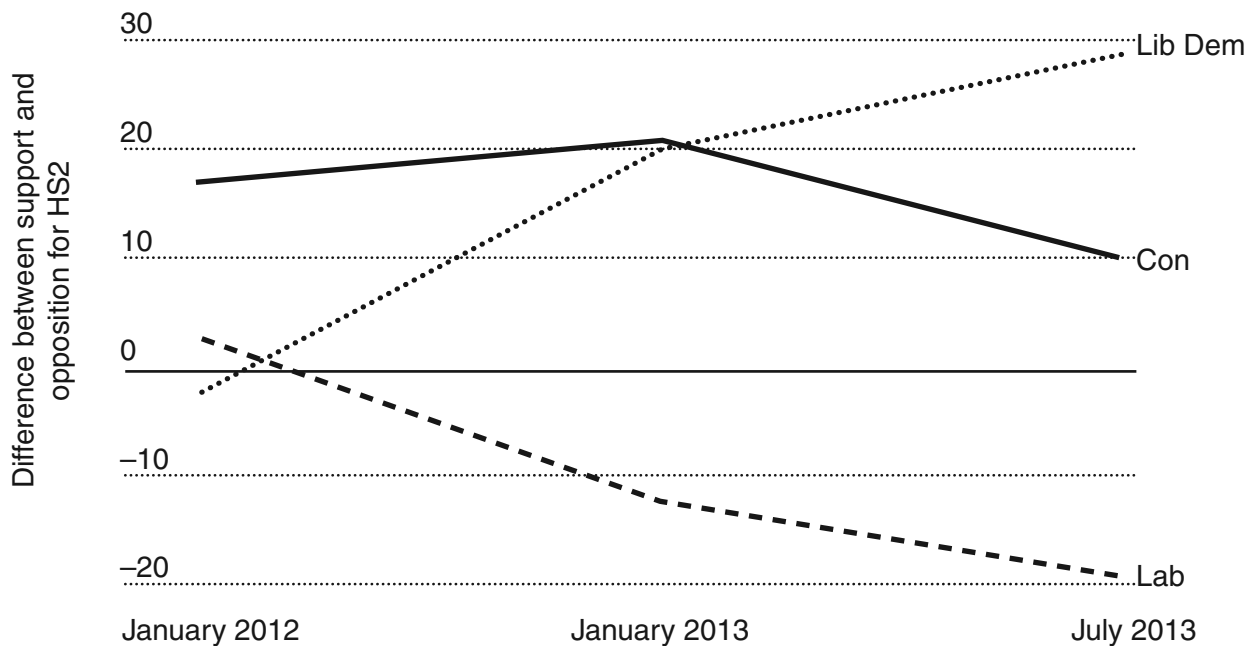
Extract adapted from <http://yougov.co.uk/news>

QUESTION – There are plans to build HS2, a new high speed rail link from London to the north of England.

This will cost £32 billion. Do you support or oppose these plans?



Support for HS2 from people who vote for the Liberal Democrat, Conservative and Labour parties



**12** Study each of the statements below.

Put a **ring** around the number of the statement **(i, ii, iii or iv)** that gives the best description of the information shown in the graphs on page 4 (Document 1).

- (i)** Support for HS2 is falling, especially among Lib Dem voters.
- (ii)** If the ‘don’t knows’ could support HS2 in the future, the project would have support from over 50% of people.
- (iii)** Fewer people were planning to vote Conservative or Labour in July 2013 than in January 2013.
- (iv)** Support for HS2 is growing especially with Labour supporters. [1]

**13** Study each of the statements below.

Put a **ring** around the number of the statement **(i, ii, iii or iv)** that gives the best way in which the Government could find out how to increase support for HS2.

- (i)** Continue the surveys every 6 months to check progress.
- (ii)** Add a question to the survey to find out how many people would use HS2.
- (iii)** Conduct interviews with people against the project.
- (iv)** Ask Members of Parliament (MPs) to pass on views from their constituents. [1]

**14** Explain how the media influence the decision-making process.

In your answer you should:

- State **two** ways in which citizens can use the media to influence the decision-making process.
- Explain why politicians take notice of media coverage when making their decisions.

.....

.....

.....

.....

.....

.....

.....

.....

.....

.....

.....

.....

.....

.....

.....

.....

.....

.....

.....

.....

..... [4]

**SECTION B**

Answer **all** the questions in this section.

Spend about **10 minutes** on this section.

Study Document 2 and answer the question that follows.

**Document 2**

Sandra is a police officer. She is on patrol with two other police officers. She hears a loud argument coming from inside a house where a woman is screaming.

**15** Study each of the options below.

- (i) Sandra can only get involved if invited into the building but she can arrest anyone arguing in the street.
- (ii) Sandra can enter the building and use force to arrest anyone committing an assault.
- (iii) If this is a family argument, it is a civil matter and doesn't involve the police.

**Evaluate the case.**

In your answer you should:

- **State** clearly what Sandra can do by putting a **ring** around option **i, ii, or iii** above.
- **Explain** why you have chosen this option and not the others.
- **Describe** Sandra's **responsibilities** in this case.

.....

.....

.....

.....

.....

.....

.....

.....

.....

..... [4]

Study Document 3 and answer the question that follows.

**Document 3**

George is 18 and is driving with friends. He has borrowed a car for the night from a fellow student without asking their permission. He crashes the car into a tree. Nobody is hurt but the police arrive.

16 Study each of the options below.

- (i) George can be arrested.
- (ii) The police will take no action as it is not a police matter.
- (iii) The police can search George but cannot arrest him.

**Evaluate the case.**

In your answer you should:

- **State** clearly what is likely to happen by putting a (ring) around option i, ii, or iii above.
- **Explain** why you have chosen this option and not the others.
- **Describe** George's **rights** in this case.

.....

.....

.....

.....

.....

.....

.....

.....

.....

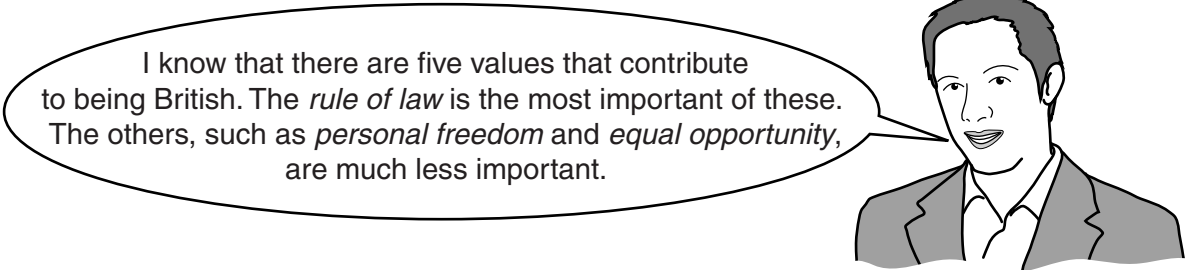
..... [4]

SECTION C

Answer the question from this section.

Spend about **20 minutes** on this section.

17\* Evaluate the following viewpoint:



In your answer, you should:

- Describe the *rule of law* and explain why it is important.
  - Describe the terms *personal freedom* and *equal opportunity* and explain why they are important.
  - Describe the other British values and say why they are important.
  - Evaluate how far you agree with the viewpoint above.
- [12]

You may use this space to plan your evaluation.

.....

.....

.....

.....

.....

.....



A series of horizontal dotted lines for writing.

A series of 25 horizontal dotted lines spanning the width of the page, providing a template for handwriting practice.



**PLEASE DO NOT WRITE ON THIS PAGE**

---

**OCR**  
Oxford Cambridge and RSA

**Copyright Information**

OCR is committed to seeking permission to reproduce all third-party content that it uses in its assessment materials. OCR has attempted to identify and contact all copyright holders whose work is used in this paper. To avoid the issue of disclosure of answer-related information to candidates, all copyright acknowledgements are reproduced in the OCR Copyright Acknowledgements Booklet. This is produced for each series of examinations and is freely available to download from our public website ([www.ocr.org.uk](http://www.ocr.org.uk)) after the live examination series.

If OCR has unwittingly failed to correctly acknowledge or clear any third-party content in this assessment material, OCR will be happy to correct its mistake at the earliest possible opportunity.

For queries or further information please contact the Copyright Team, First Floor, 9 Hills Road, Cambridge CB2 1GE.

OCR is part of the Cambridge Assessment Group; Cambridge Assessment is the brand name of University of Cambridge Local Examinations Syndicate (UCLES), which is itself a department of the University of Cambridge.