

Level 2 Cambridge Technical in Health and Social Care

05880/05881

Unit 1: Principles of working in health, social care and childcare

Sample Assessment Material

Date – Morning/Afternoon

Time: 45 minutes

This test is a computer based test and will be completed using Surpass on OCR Secure Assess portal.

This SAM illustrates the styles and types of questions that make up this test, along with its associated mark scheme.

A practice test will be available on the OCR Secure Assess portal.

There will not be a paper test available for this qualification.

First name

Last name

Centre
number

Candidate
number

INFORMATION FOR CANDIDATES

- The total mark for this paper is **40**.
- The marks for each question are shown in brackets [].

Answer **all** the questions.

1 A crèche is:

- (a) a young people's care setting
- (b) a residential care setting
- (c) a health care environment
- (d) a childcare environment

[1]

2 COSHH stands for:

- (a) Control of Substances Hazardous to Humans
- (b) Control of Significant Health Hazards
- (c) Control of Substances Hazardous to Health
- (d) Control of Serious Health Hazards

[1]

3 This safety sign means:



- (a) No entry
- (b) No exit
- (c) No parking
- (d) No hand signals

[1]

4 Which disease must be reported, according to the Reporting of Injuries, Diseases and Dangerous Occurrences Regulations (RIDDOR)?

- (a) bronchitis
- (b) meningitis
- (c) osteoporosis
- (d) tonsillitis

[1]

5 The correct fridge temperature for safe food storage is between:

- (a) 0°C and 5°C
- (b) 5°C and 10°C
- (c) 0°C and 8°C
- (d) 8°C and 18°C

[1]

6 There is water on the floor by the front door. What should your first response be?

- (a) put a 'wet floor' sign in place
- (b) inform your supervisor
- (c) inform the caretaker
- (d) get a mop and clear it up

[1]

7 Which of the following is a security measure?

- (a) having regular fire drills
- (b) following correct handwashing procedures
- (c) wearing staff lanyards
- (d) carrying out risk assessments

[1]

Turn over

8 Which is the first action to take in the event of a fire?

- (a) call 999
- (b) raise the alarm
- (c) carry out a head count
- (d) leave the building

[1]

9 The term 'equality' means:

- (a) treating everyone the same
- (b) giving everyone the same amount of time
- (c) treating everyone according to their needs
- (d) giving everyone the same activities

[1]

10 Which of the following is an example of supporting diversity at a nursing home?

- (a) the same meal is provided for everyone
- (b) meal times are the same for everyone
- (c) food is not available between mealtimes
- (d) a menu with vegetarian options is available

[1]

11 Which of the following is a protected characteristic identified in the Equality Act?

- (a) childhood
- (b) gender
- (c) sex
- (d) young people

[1]

12 What should you do to challenge discrimination?

- (a) contact someone from the Equality Act
- (b) shout at the person discriminating
- (c) challenge the person discriminating
- (d) ignore the person discriminating

[1]

13 Which of the following is a way of valuing diversity in a hospital?

- (a) staff spending exactly the same amount of time with each patient
- (b) arranging for a priest to meet with each patient
- (c) a prayer room is available for patients to use
- (d) staff only allow two visitors for each patient

[1]

14 Which one of the following comments is an example of stereotyping?

- (a) ability, not gender, affects children's progress at school
- (b) in general, and in most hospitals, midwives are always women
- (c) many older adults continue to live independently into their 90s
- (d) there are probably an equal number of male and female GPs

[1]

15 Which of the following is a value of care?

- (a) ensuring discriminatory practice
- (b) treating people equal and the same
- (c) maintaining confidentiality
- (d) promoting a groups' rights and beliefs

[1]

Turn over

16 Which of the following is a piece of legislation that supports a person-centred approach?

- (a) The Human Rights Act
- (b) The Individual Rights Act
- (c) The Human Rights Protection Act
- (d) The Protection of Human Rights Act

[1]

17 Part of the role of the Equality and Human Rights Commission is to:

- (a) pass laws to protect individuals' rights
- (b) fine organisations that do not promote equality
- (c) carry out inspections to ensure individual rights are promoted
- (d) provide advice about equality issues

[1]

18 Working in a person centred way involves:

- (a) practitioners working together with an individual
- (b) practitioners making care decisions for an individual on the care to be provided
- (c) practitioners deciding what type of care is best for an individual
- (d) practitioners consulting individuals before deciding on the care to be provided

[1]

19 Choose the early years value of care from the list below:

- (a) the welfare of the individual is most important
- (b) promoting children's welfare
- (c) encouraging children's welfare
- (d) the welfare of the child is paramount

[1]

20 The Care Certificate, Standard 5, is about promoting person-centred values. Which of the following is one of these values?

- (a) redress
- (b) reflect
- (c) respect
- (d) respond

[1]

21 Choose the statement that best describes the term 'safeguarding'.

- (a) promoting independence
- (b) ensuring individuals get their rights
- (c) keeping someone safe from harm
- (d) dealing with complaints about abuse

[1]

22 The initials DBS stand for:

- (a) Detention and Barring Service
- (b) Disclosure and Barring Service
- (c) Disclosure Board for Safeguarding
- (d) Disclosure of Bullying Service

[1]

23 Verbal insults and humiliation are examples of which type of abuse?

- (a) emotional
- (b) neglect
- (c) physical
- (d) sexual

[1]

Turn over

24 What could make an individual more vulnerable to abuse?

- (a) their age
- (b) having diabetes
- (c) their gender
- (d) living in a care setting

[1]

25 Choose the correct action to take when someone discloses abuse:

- (a) tell them it is a secret and they should not have told you
- (b) promise you will keep it a secret because the person asked you to
- (c) promise to keep it secret, unless it happens again
- (d) tell the person you cannot keep it a secret, you have to tell someone

[1]

26 The Care Quality Commission is responsible for:

- (a) appointing Child Protection Officers to work in schools
- (b) checking services meet the required standards of quality and safety
- (c) creating legislation to protect individuals in care settings
- (d) producing safeguarding policies for care settings

[1]

27 Every Child Matters describes outcomes for children. How many 'outcomes' are there?

- (a) 3 outcomes
- (b) 4 outcomes
- (c) 5 outcomes
- (d) 6 outcomes

[1]

28 You do not know what to do about a colleague at work who is providing poor care to individuals. Which policy will give you guidance?

(a) bullying policy

(b) confidentiality policy

(c) equal opportunities policy

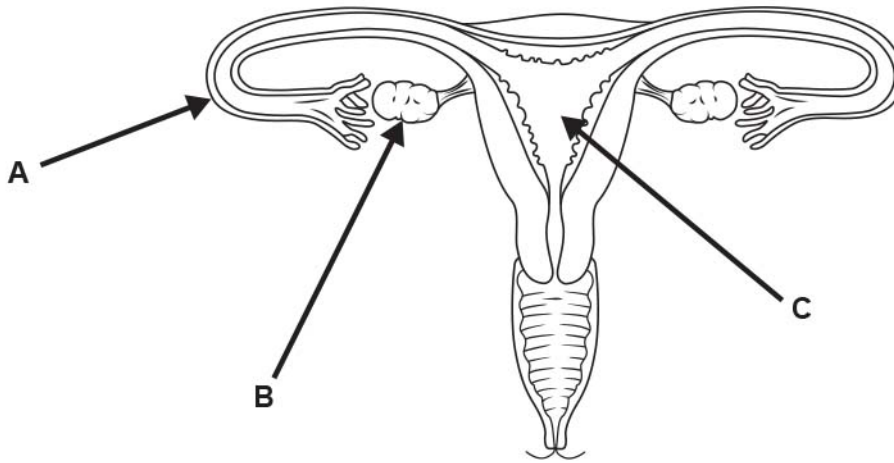
(d) whistleblowing policy

[1]

Turn over for next question

Turn over

Diagram 1: The diagram below shows the female reproductive organs.



29 What is part A on Diagram 1?

- (a) cervix
- (b) fallopian tube
- (c) ovary
- (d) uterus

[1]

30 What is part B on Diagram 1?

- (a) cervix
- (b) fallopian tube
- (c) ovary
- (d) uterus

[1]

31 What is part C on Diagram 1?

- (a) cervix
- (b) fallopian tube
- (c) ovary
- (d) uterus

[1]

32 One of the possible causes of type 2 diabetes is:

- (a) being underweight
- (b) being overweight
- (c) being male
- (d) having low blood pressure

[1]

33 Peak flow is a measure of:

- (a) body mass index
- (b) level of cholesterol found in the blood
- (c) blood pressure
- (d) speed of airflow in and out of the lungs

[1]

34 The function of the respiratory system is to:

- (a) breakdown food into molecules which are then absorbed
- (b) produce hormones that regulate the body's growth and metabolism
- (c) take in oxygen and expel carbon dioxide as we breathe
- (d) transport nutrients, oxygen, and hormones to cells throughout the body

[1]

35 Which of the following is an example of written communication?

- (a) eye contact
- (b) gestures
- (c) sign language
- (d) temperature chart

[1]

Turn over

36 Identify a barrier to communication.

- (a) appropriate vocabulary
- (b) adapting the environment
- (c) use of jargon
- (d) use of positive body language

[1]

37 Which is not a stage of the communication cycle?

- (a) acknowledge
- (b) ask questions
- (c) inform
- (d) invite

[1]

38 What is PECS?

- (a) a form of British Sign language
- (b) a computer-based method of communication
- (c) a method of verbal communication
- (d) a specialist method of communication

[1]

39 A nurse says "Morning Mrs Smith, do you want breakfast today?"

What type of question is the nurse using?

- (a) a closed question
- (b) an indirect question
- (c) an open question
- (d) a supportive question

[1]

40 'Pace' means how:

- (a) briefly someone speaks
- (b) loudly someone speaks
- (c) quickly someone speaks
- (d) quietly someone speaks

[1]

END OF QUESTION PAPER

PLEASE DO NOT WRITE ON THIS PAGE

OCR

Oxford Cambridge and RSA

Copyright Information:

Permission to reproduce items where third-party owned material protected by copyright is included has been sought and cleared where possible. Every reasonable effort has been made by the publisher (OCR) to trace copyright holders, but if any items requiring clearance have unwittingly been included, the publisher will be pleased to make amends at the earliest possible opportunity.

OCR is part of the Cambridge Assessment Group. Cambridge Assessment is the brand name of University of Cambridge Local Examinations Syndicate (UCLES), which is itself a department of the University of Cambridge.

SPECIMEN

Sample Assessment Material

LEVEL 2 CAMBRIDGE TECHNICAL IN HEALTH AND SOCIAL CARE

05880/05881

Unit 1: Principles of working in health and social care

MARK SCHEME

Duration: 45 minutes

MAXIMUM MARK 40

This document consists of 2 pages

Question	Answer	Marks
1	d	1
2	c	1
3	a	1
4	b	1
5	a	1
6	d	1
7	c	1
8	b	1
9	c	1
10	d	1
11	c	1
12	c	1
13	c	1
14	b	1
15	c	1
16	a	1
17	d	1
18	a	1
19	d	1
20	c	1

Question	Answer	Marks
21	c	1
22	b	1
23	a	1
24	d	1
25	d	1
26	b	1
27	c	1
28	d	1
29	b	1
30	c	1
31	d	1
32	b	1
33	d	1
34	c	1
35	d	1
36	c	1
37	b	1
38	d	1
39	a	1
40	c	1