



Oxford Cambridge and RSA

Wednesday 22 June 2016 – Afternoon

GCSE HEALTH AND SOCIAL CARE

A914/02 Safeguarding and Protecting Individuals

Candidates answer on the Question Paper.

OCR supplied materials:

None

Other materials required:

None

Duration: 1 hour



Candidate forename		Candidate surname	
-----------------------	--	----------------------	--

Centre number						Candidate number				
---------------	--	--	--	--	--	------------------	--	--	--	--

INSTRUCTIONS TO CANDIDATES

- Write your name, centre number and candidate number in the boxes above. Please write clearly and in capital letters.
- Use black ink. Pencil may be used for graphs and diagrams only.
- Read each question carefully. Make sure you know what you have to do before starting your answer.
- Write your answer to each question in the space provided. If additional space is required, you should use the lined page(s) at the end of this booklet. The question number(s) must be clearly shown.
- Answer **all** the questions.
- Do **not** write in the bar codes.

INFORMATION FOR CANDIDATES

- The number of marks is given in brackets [] at the end of each question or part question.
- Quality of Written Communication will be assessed in questions marked with an asterisk (*).
- The total number of marks for this paper is **60**.
- This document consists of **12** pages. Any blank pages are indicated.

Answer **all** the questions.

- 1 Complete the table below by stating the correct method of disposal for each type of hazardous waste.

Hazardous waste	Method of disposal
Clinical waste / dressings	
Body fluids / urine / faeces	
Out of date medication	
Needles / sharps / syringes	
Soiled linen	

[5]

- 2 The Reporting of Injuries, Diseases and Dangerous Occurrences Regulations (RIDDOR) is a piece of legislation that requires care settings to report certain diseases and accidents.

Tick **three** diseases in the table below that RIDDOR states must be reported.

Tick **three** only.

Diseases	Must be reported (✓)
Bronchitis	
Salmonella	
Anorexia nervosa	
Meningitis	
Legionnaires' disease	
Osteoporosis	
Appendicitis	
Tonsillitis	

[3]

5* Elaine is 93 years old and has slipped in her bathroom. She has severe pain in her hip and is in shock.

Explain the first aid procedure that should be carried out.

.....
.....
.....
.....
.....
.....
.....
.....
.....
.....
.....
.....
.....
.....
.....
.....
.....

[6]

6 State **two** ways a first aider can reduce the risk of spreading an infection when dealing with a casualty who is bleeding.

1

2

[2]

7 The basic procedure for first aid involves five checks.

Choose the **five** checks from those listed in the box below and write them in the correct order.

breathing	response	danger	circulation	recovery	airway
------------------	-----------------	---------------	--------------------	-----------------	---------------

- 1
- 2
- 3
- 4
- 5

[5]

8 Jamie is 6 years old. His clothes are dirty and smelly. He is always hungry and he looks pale and thin. He lives with his mother who has violent rows with her boyfriend.

(a) Identify **two** types of ill-treatment that Jamie could be experiencing.

- 1
-
- 2
-

[2]

(b) Describe the different possible effects on Jamie of each of the following factors:

His clothes are dirty and smelly.

Effect
.....
.....

He is always hungry.

Effect
.....
.....

He sees his mother having violent rows with her boyfriend.

Effect
.....
.....

[6]

9* Explain how key features of the Children Act could contribute to safeguarding children.

.....
.....
.....
.....
.....
.....
.....
.....
.....
.....
.....

[6]

10 Outline the role of the Care Quality Commission.

.....
.....
.....
.....
..... [3]

11* Describe the procedure for evacuating a care home for older adults in the event of a fire.

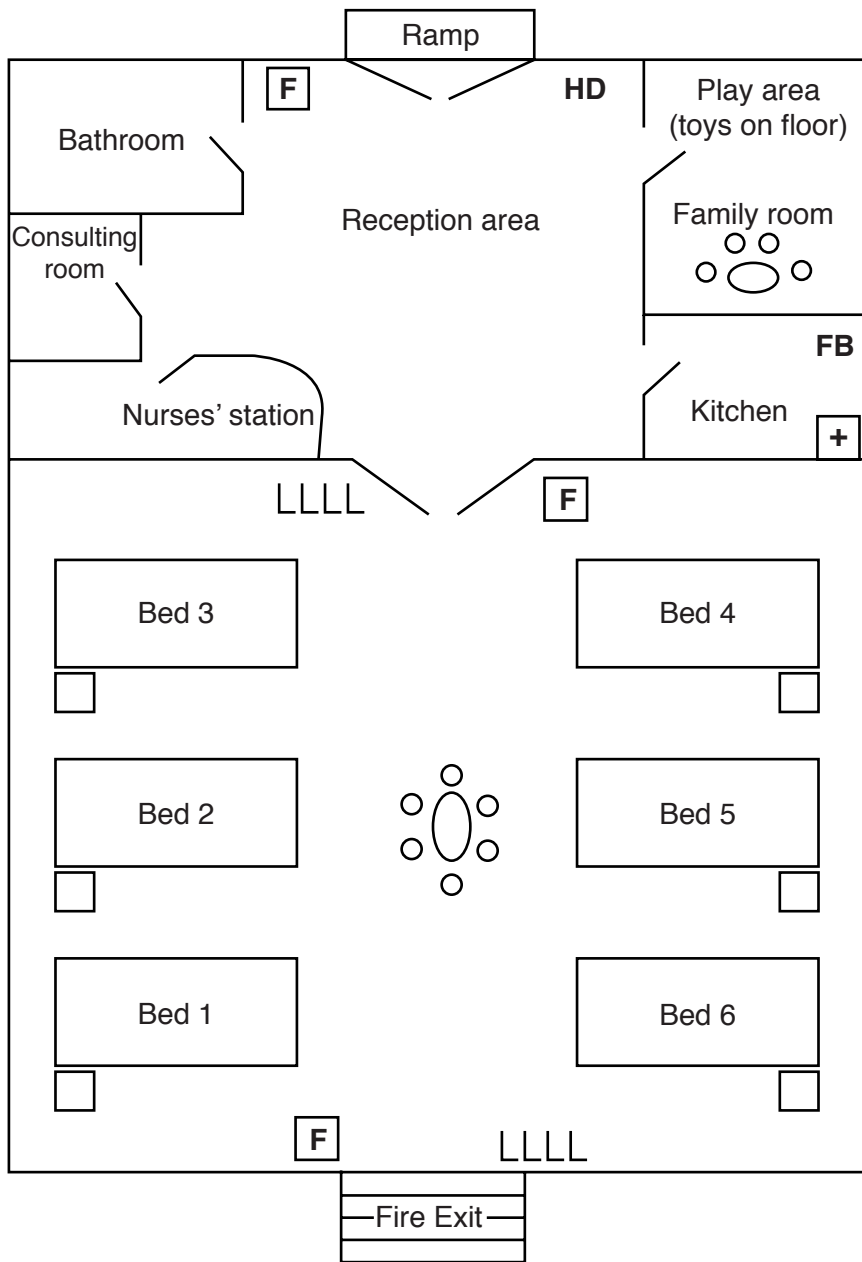
.....
.....
.....
.....
.....
.....
.....
.....
.....
.....
.....
.....
.....
.....
.....
.....
.....
.....
.....
.....
.....
..... [6]

BLANK PAGE

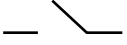

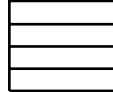

Question 12 begins on page 10

PLEASE DO NOT WRITE ON THIS PAGE

Plan of a hospital ward



Key:

- | | | | |
|---|------------------------------|--|--------------------|
| LLLL | Stack of chairs for visitors | + | First aid box |
|  | Door | FB | Fire blanket |
|  | Table and chairs | F | Fire extinguisher |
| | | HD | Hot drinks machine |
| | |  | Steps |
| | |  | Bedside table |

ADDITIONAL ANSWER SPACE

If additional space is required, you should use the following lined page(s). The question number(s) must be clearly shown in the margin(s).

A large rectangular area with a solid vertical line on the left side and horizontal dotted lines across the rest of the page, providing space for writing answers.



Copyright Information

OCR is committed to seeking permission to reproduce all third-party content that it uses in its assessment materials. OCR has attempted to identify and contact all copyright holders whose work is used in this paper. To avoid the issue of disclosure of answer-related information to candidates, all copyright acknowledgements are reproduced in the OCR Copyright Acknowledgements Booklet. This is produced for each series of examinations and is freely available to download from our public website (www.ocr.org.uk) after the live examination series.

If OCR has unwittingly failed to correctly acknowledge or clear any third-party content in this assessment material, OCR will be happy to correct its mistake at the earliest possible opportunity.

For queries or further information please contact the Copyright Team, First Floor, 9 Hills Road, Cambridge CB2 1GE.

OCR is part of the Cambridge Assessment Group; Cambridge Assessment is the brand name of University of Cambridge Local Examinations Syndicate (UCLES), which is itself a department of the University of Cambridge.