

## Level 3 Cambridge Technical in Health and Social Care

05831/05832/05833/05871

### Unit 4: Anatomy and physiology for health and social care

Wednesday 7 June 2017 – Afternoon

Time allowed: 2 hours

**You must have:**

- none

**You may use:**

- none

First Name						Last Name					
Centre Number						Candidate Number					
Date of Birth	D	D	M	M	Y	Y	Y	Y			

#### INSTRUCTIONS

- Use black ink.
- Complete the boxes above with your name, centre number, candidate number and date of birth.
- Answer **all** the questions.
- Write your answer to each question in the space provided.
- If additional space is required, you should use the lined page(s) at the end of this booklet. The question number(s) must be clearly shown.

#### INFORMATION

- The total mark for this paper is **100**.
- The marks for each question are shown in brackets [ ].
- Quality of extended responses will be assessed in questions marked with an asterisk (\*).
- This document consists of **20** pages.

FOR EXAMINER USE ONLY	
Question No	Mark
1	/14
2	/16
3	/26
4	/14
5	/30
<b>Total</b>	<b>/100</b>

Answer **all** questions.

1 (a) Samantha has asthma.

Describe what is happening in the bronchi and bronchioles during an asthma attack.

.....  
.....  
.....  
.....  
..... [2]

(b)\* Certain triggers can increase the chance of an asthma attack.

Explain how Samantha could avoid these possible triggers.

.....  
.....  
.....  
.....  
.....  
.....  
.....  
.....  
.....  
.....  
.....  
.....  
.....  
.....  
.....  
.....  
.....  
.....  
..... [6]



2 (a) Identify a function for each of the following parts of the digestive system.

Salivary glands:

.....  
.....

Epiglottis:

.....  
.....

Large intestine:

.....  
.....

Rectum:

.....  
.....

[4]

(b) Identify **two** functions of pancreatic juice.

1 .....

2 .....

[2]

(c) Molly and Pamela are sisters and both have been diagnosed with digestive malfunctions. Molly has gallstones and Pamela has IBS (Irritable Bowel Syndrome).

(i) Identify **two** possible causes of Molly's gallstones.

1 .....

2 .....

[2]

(ii) Identify **two** possible effects of the gallstones on Molly.

1.....

.....

2.....

.....

**[2]**

(d)\* Analyse the possible impact of IBS on Pamela's daily life.

.....

.....

.....

.....

.....

.....

.....

.....

.....

.....

.....

.....

.....

.....

**[6]**

3 (a) (i) Identify the **type of joint** found at each of the locations listed below.

hip

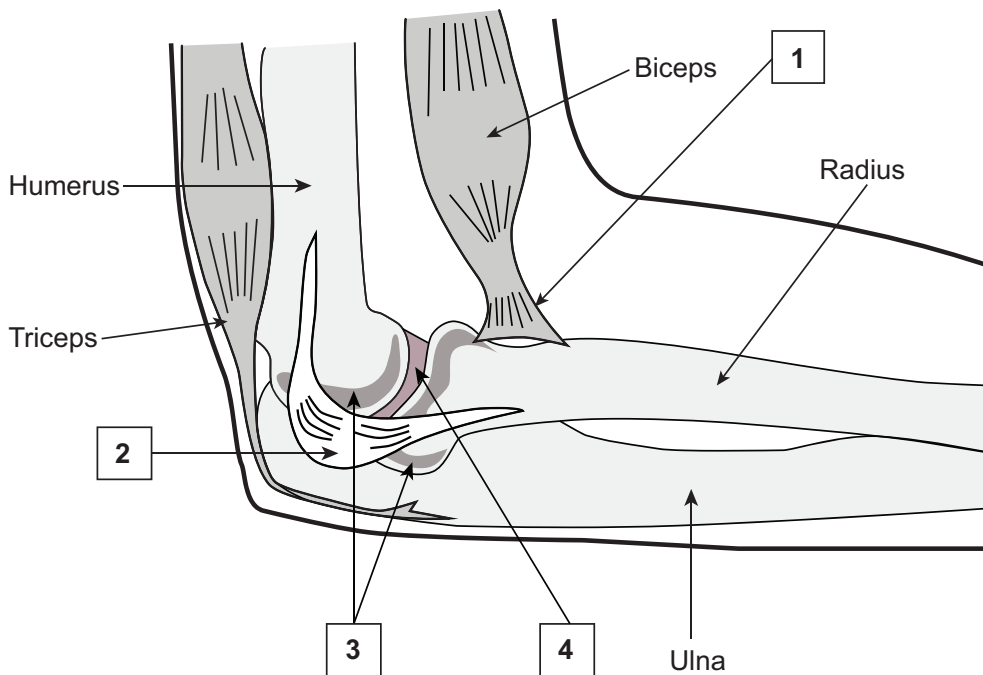
.....

wrist

.....

[2]

(ii) The diagram below shows an elbow joint.



Identify the structures that have been labelled 1- 4 in the diagram.

1.....

2.....

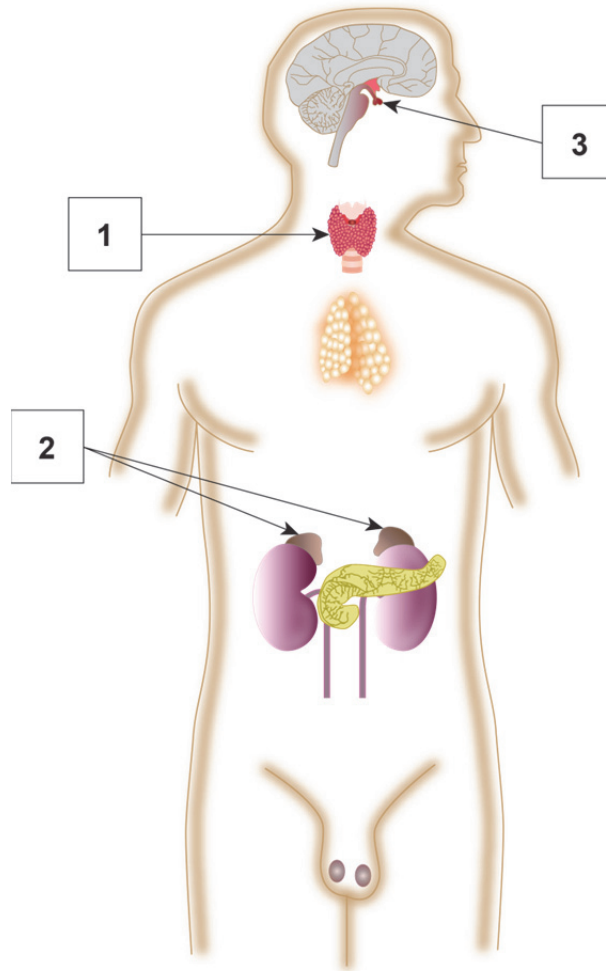
3.....

4.....

[4]



(c) (i) The diagram below shows the location of human endocrine glands.



Identify the endocrine glands that have been labelled 1-3 in the diagram.

Gland 1 .....

Gland 2 .....

Gland 3 .....

[3]

(ii) Name **one** hormone produced by each of the glands labelled 1-3 in the diagram.

Gland 1, hormone produced:

.....

Gland 2, hormone produced:

.....

Gland 3, hormone produced:

.....

[3]





4 (a) Describe **one** function for each of the following structures found in the eye.

The humours

.....  
.....  
.....  
.....  
.....  
.....

The iris

.....  
.....  
.....  
.....  
.....  
.....

[2]

(b) Pablo has cataracts in both eyes.

State **two** effects of cataracts on Pablo's vision.

1 .....

.....  
.....  
.....  
.....  
.....

2 .....

.....  
.....  
.....  
.....  
.....

[2]

(c) State **four** measures that Pablo's place of work could take to promote the safety and independence of people with visual impairment.

1 .....

.....

.....

.....

.....

2 .....

.....

.....

.....

.....

3 .....

.....

.....

.....

.....

4 .....

.....

.....

.....

.....

[4]



5 (a) Describe what occurs in the heart during **systole** and **diastole**.

Systole

.....  
.....  
.....

Diastole

.....  
.....  
.....

[4]

(b) Identify **two** functions of the **Sino Atrial** (SA) node of the heart.

1 .....

.....

2 .....

.....

[2]











A series of horizontal dotted lines for writing, spanning the width of the page. A solid vertical line is positioned on the left side of the page, serving as a margin.

A series of horizontal dotted lines for writing, spanning the width of the page. A solid vertical line is positioned on the left side of the page, serving as a margin.

---

# OCR

Oxford Cambridge and RSA

**Copyright Information:**

OCR is committed to seeking permission to reproduce all third-party content that it uses in its assessment materials. OCR has attempted to identify and contact all copyright holders whose work is used in this paper. To avoid the issue of disclosure of answer-related information to candidates, all copyright acknowledgements are reproduced in the OCR Copyright Acknowledgements Booklet. This is produced for each series of examinations and is freely available to download from our public website ([www.ocr.org.uk](http://www.ocr.org.uk)) after the live examination series.

If OCR has unwittingly failed to correctly acknowledge or clear any third-party content in this assessment material OCR will be happy to correct its mistake at the earliest possible opportunity.

For queries or further information please contact the Copyright Team, First Floor, 9 Hills Road, Cambridge CB2 1GE.

OCR is part of the Cambridge Assessment Group. Cambridge Assessment is the brand name of University of Cambridge Local Examinations Syndicate (UCLES), which is itself a department of the University of Cambridge.