

OCR

Oxford Cambridge and RSA

Tuesday 19 June 2018 – Afternoon

A2 GCE MATHEMATICS (MEI)

4753/01 Methods for Advanced Mathematics (C3)

QUESTION PAPER

Candidates answer on the Printed Answer Book.

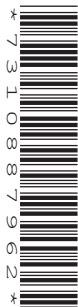
OCR supplied materials:

- Printed Answer Book 4753/01
- MEI Examination Formulae and Tables (MF2)

Other materials required:

- Scientific or graphical calculator

Duration: 1 hour 30 minutes



INSTRUCTIONS TO CANDIDATES

These instructions are the same on the Printed Answer Book and the Question Paper.

- The Question Paper will be found inside the Printed Answer Book.
- Write your name, centre number and candidate number in the spaces provided on the Printed Answer Book. Please write clearly and in capital letters.
- **Write your answer to each question in the space provided in the Printed Answer Book.** If additional space is required, you should use the lined page(s) at the end of this booklet. The question number(s) must be clearly shown.
- Use black ink. HB pencil may be used for graphs and diagrams only.
- Read each question carefully. Make sure you know what you have to do before starting your answer.
- Answer **all** the questions.
- Do **not** write in the barcodes.
- You are permitted to use a scientific or graphical calculator in this paper.
- Final answers should be given to a degree of accuracy appropriate to the context.

INFORMATION FOR CANDIDATES

This information is the same on the Printed Answer Book and the Question Paper.

- The number of marks is given in brackets [] at the end of each question or part question on the Question Paper.
- You are advised that an answer may receive **no marks** unless you show sufficient detail of the working to indicate that a correct method is being used.
- The total number of marks for this paper is **72**.
- The Printed Answer Book consists of **16** pages. The Question Paper consists of **8** pages. Any blank pages are indicated.

INSTRUCTION TO EXAMS OFFICER/INVIGILATOR

- Do not send this Question Paper for marking; it should be retained in the centre or recycled. Please contact OCR Copyright should you wish to re-use this document.

Section A (36 marks)

- 1 A point P moves round the curve with equation $3x^2 + 4y^2 = 4$. At time t , P is at the point (x, y) , as shown in Fig. 1.

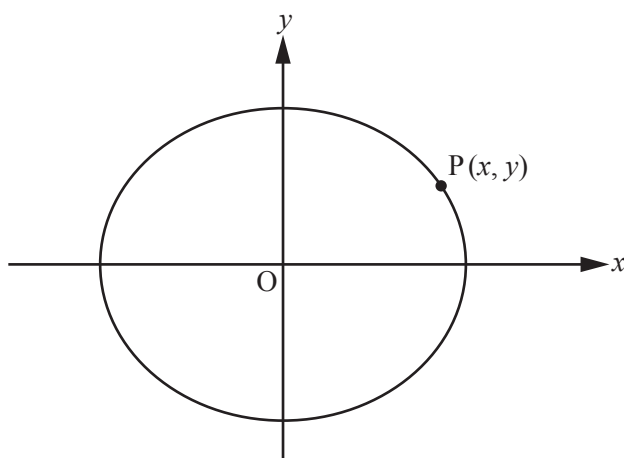


Fig. 1

(i) Find $\frac{dy}{dx}$ in terms of x and y . [2]

(ii) When P is at the point on the curve with x -coordinate 1 and positive y -coordinate, $\frac{dx}{dt} = 4$.

Find $\frac{dy}{dt}$ at this point. [4]

- 2 The three functions $f(x)$, $g(x)$ and $h(x)$ are defined as follows:

$$f(x) = \frac{x}{1-2x^2}, \quad g(x) = 1 + \sin 2x \quad \text{and} \quad h(x) = 3e^{-2x^2}.$$

In the table in the Answer Book, write Yes or No in each space to indicate whether the function is odd, whether it is even, and whether it is periodic. If a function is periodic, state its period. [4]

- 3 The mass of a radioactive material decreases exponentially. Its *half-life* is the time required for the mass of the material to reduce to half its initial value. The half-life of plutonium 241 is 14.4 years.

(i) Write down the percentage of the initial mass of plutonium 241 remaining after 28.8 years. [1]

(ii) The mass M grams of plutonium 241 at time t years is given by the equation

$$M = M_0 e^{-kt},$$

where M_0 grams is the initial mass and k is a constant. Find k , giving your answer correct to two significant figures. [3]

- 4 Fig. 4 shows part of the curve with equation $y = e^{-x} \sin 2x$.

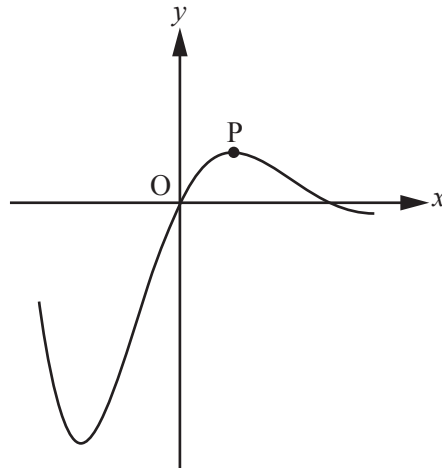
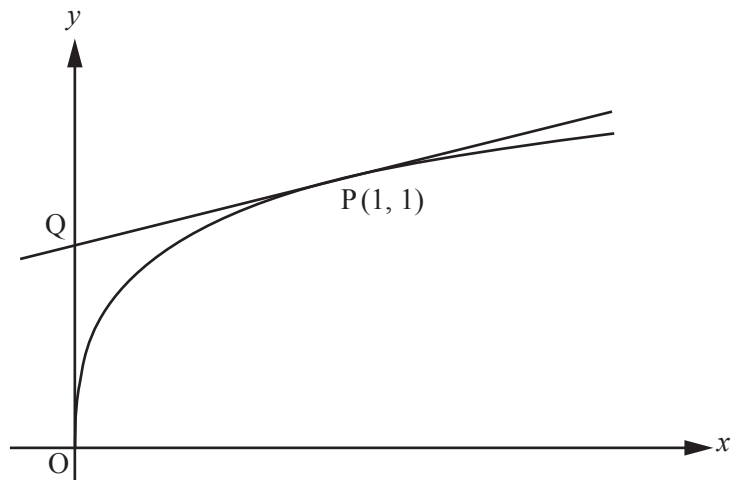


Fig. 4

- Find the coordinates of the maximum point P. [6]
- 5 (i) On the same axes, sketch the graphs of $y = -|x + 1|$ and $y = 2x$. [3]
- (ii) Solve the equation $-|x + 1| = 2x$. [2]
- 6 The function $h(x)$ is such that $h(x) = fg(x)$, where $f(x) = 2x + \frac{1}{2}\pi$ for $x \in \mathbb{R}$ and $g(x) = \arcsin x$ for $-1 \leq x \leq 1$.
- (i) Find $h\left(\frac{1}{2}\right)$, giving your answer as a multiple of π . [2]
- (ii) Find $h^{-1}(x)$. [4]
- 7 Prove that $n^3 - 3n^2 + 2n$ is divisible by 6 for all positive integers n . [5]

Section B (36 marks)

- 8 Fig. 8 shows the curve with equation $y = \frac{2\sqrt{x}}{1+\sqrt{x}}$. The tangent to the curve at P (1, 1) intersects the y-axis at Q.

**Fig. 8**

- (i) Show that $\frac{dy}{dx} = \frac{1}{\sqrt{x}(1+\sqrt{x})^2}$.

Hence find the equation of PQ, giving your answer in the form $ax + by + c = 0$, where a , b and c are integers. [7]

- (ii) Show that the substitution $u = 1 + \sqrt{x}$ transforms $\int \frac{2\sqrt{x}}{1+\sqrt{x}} dx$ to $\int \frac{4(u-1)^2}{u} du$. [3]

- (iii) Hence find the exact area of the region enclosed by the curve, the y-axis and the line PQ. [8]

- 9 Fig. 9 shows the curves with equations $y = \ln x$ and $y = 2 \ln(x-2)$ which intersect at Q. The curve $y = 2 \ln(x-2)$ crosses the x -axis at P.

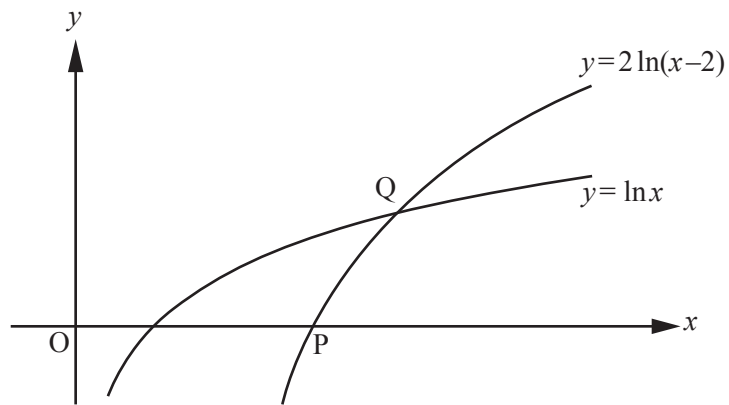


Fig. 9

- (i) Describe a sequence of two transformations which maps the curve $y = \ln x$ onto the curve $y = 2 \ln(x-2)$. [3]
- (ii) Find the exact coordinates of P and Q. [5]
- (iii) Using integration by parts, show that $\int \ln x \, dx = x \ln x - x + c$, where c is an arbitrary constant. [3]
- (iv) Hence show that the area of the finite region enclosed by the curve $y = \ln x$, the curve $y = 2 \ln(x-2)$ and the x -axis is $m \ln 2 + n$, where m and n are integers to be determined. [7]

END OF QUESTION PAPER

BLANK PAGE

BLANK PAGE

**Copyright Information**

OCR is committed to seeking permission to reproduce all third-party content that it uses in its assessment materials. OCR has attempted to identify and contact all copyright holders whose work is used in this paper. To avoid the issue of disclosure of answer-related information to candidates, all copyright acknowledgements are reproduced in the OCR Copyright Acknowledgements Booklet. This is produced for each series of examinations and is freely available to download from our public website (www.ocr.org.uk) after the live examination series.

If OCR has unwittingly failed to correctly acknowledge or clear any third-party content in this assessment material, OCR will be happy to correct its mistake at the earliest possible opportunity.

For queries or further information please contact the Copyright Team, First Floor, 9 Hills Road, Cambridge CB2 1GE.

OCR is part of the Cambridge Assessment Group; Cambridge Assessment is the brand name of University of Cambridge Local Examinations Syndicate (UCLES), which is itself a department of the University of Cambridge.