

**ADVANCED GCE  
 HEALTH AND SOCIAL CARE**

**F921**

Unit 12: Anatomy and Physiology in Practice

**TUESDAY 10 JUNE 2008**

Afternoon  
 Time: 1 hour 30 minutes

Candidates answer on the question paper

**Additional materials:** No additional materials are required



Candidate  
Forename

Candidate  
Surname

Centre  
Number

--	--	--	--	--

Candidate  
Number

--	--	--	--

**INSTRUCTIONS TO CANDIDATES**

- Write your name in capital letters, your Centre Number and Candidate Number in the boxes above.
- Use blue or black ink. Pencil may be used for graphs and diagrams only.
- Read each question carefully and make sure that you know what you have to do before starting your answer.
- Answer **all** the questions.
- Do **not** write in the bar codes.
- Write your answer to each question in the space provided.

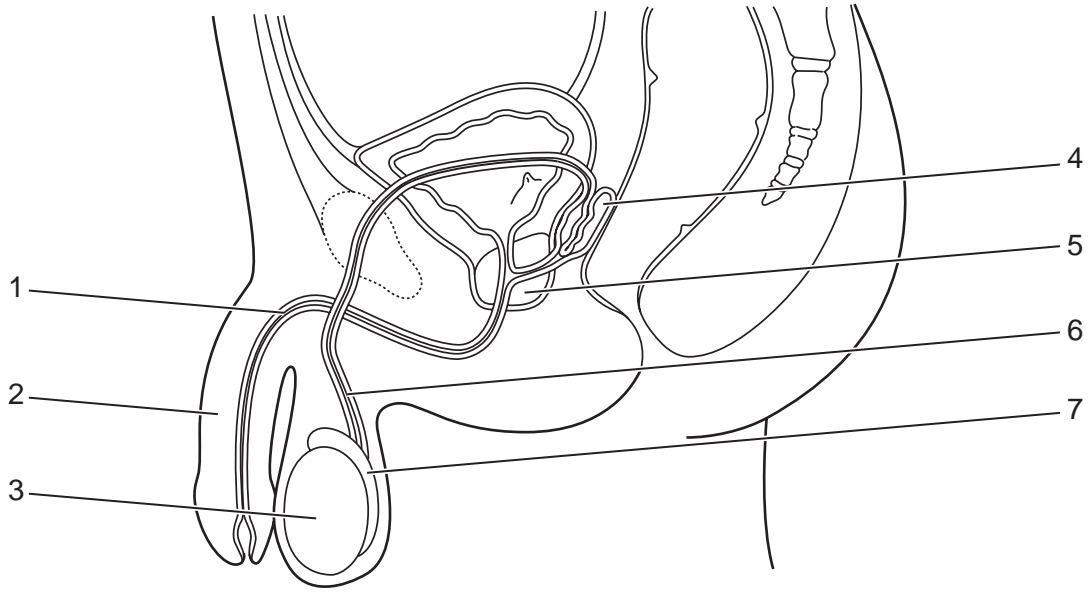
**INFORMATION FOR CANDIDATES**

- The number of marks for each question is given in brackets [ ] at the end of each question or part question.
- The total number of marks for this paper is **100**.
- You will be awarded marks for the quality of written communication where an answer requires a piece of extended writing.

**FOR EXAMINER'S USE**

1	
2	
3	
4	
5	
<b>TOTAL</b>	

This document consists of **14** printed pages and **2** blank pages.



**Male Reproductive System**

(a) Identify each of the structures labelled 1 – 7 in the diagram. Describe the function of each structure.

1.....

.....  
.....

2.....

.....  
.....

3.....

.....  
.....

4.....

.....  
.....

5.....

.....  
.....

6.....

.....

.....

7.....

.....

.....[14]

**(b)** Explain why the testes are outside of the body cavity.

.....

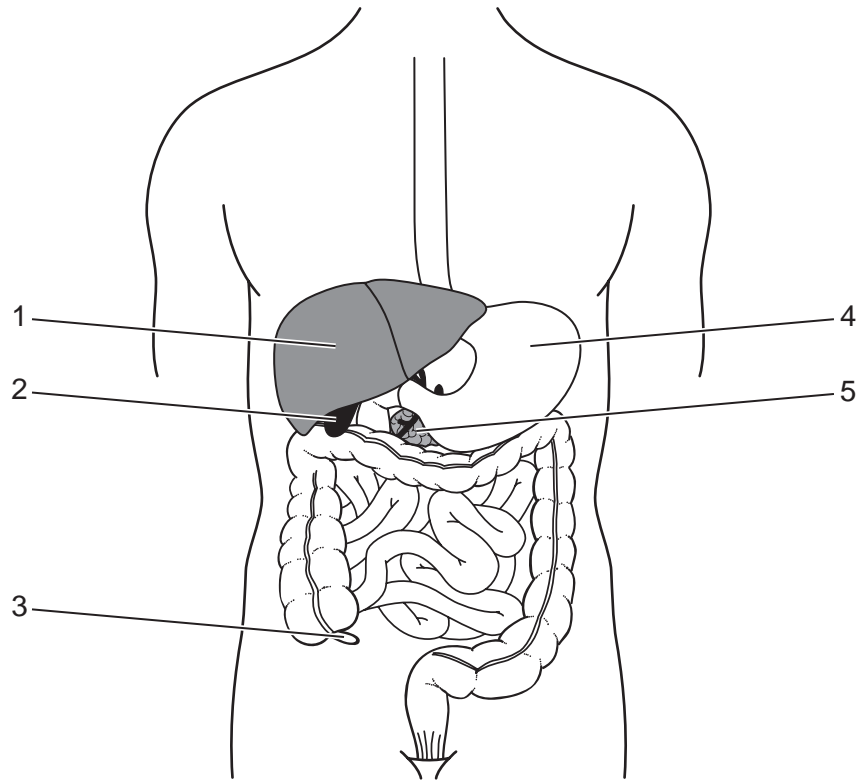
.....

.....[1]

[Total: 15]







**Digestive System**

**(a)** Identify each of the structures labelled 1 – 5 in the diagram.

- 1.....
- 2.....
- 3.....
- 4.....
- 5.....[5]

**(b)** Describe the process of digestion in the stomach and the duodenum (the duodenum is the first section of the small intestine).

.....

.....

.....

.....

.....

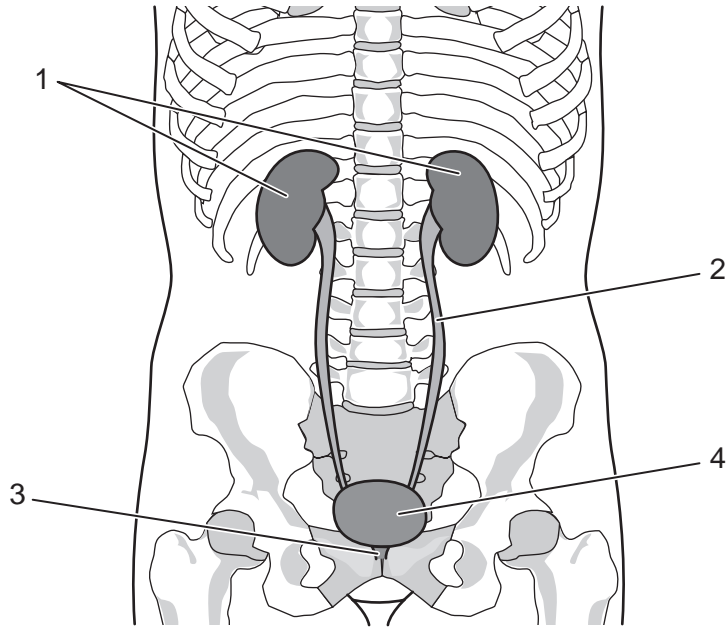
.....

.....  
.....  
.....  
.....  
.....  
.....  
.....  
.....  
.....  
.....  
..... [5]

(c) Identify **one** dysfunction of the digestive system and describe how it could be treated.

.....  
.....  
.....  
.....  
.....  
.....  
.....  
.....  
.....  
.....  
.....  
.....  
.....  
.....  
.....  
.....  
.....  
.....  
.....  
.....  
..... [5]

[Total: 15]



**Urinary System**

**(a)** Identify each of the structures labelled 1 – 4 in the diagram.

- 1.....
- 2.....
- 3.....
- 4.....[4]

**(b)** Outline the process of urine production in the kidney.

.....

.....

.....

.....

.....

.....

.....

.....

.....

.....

.....









A series of 25 horizontal dotted lines spanning the width of the page, providing a template for handwriting practice.



**BLANK PAGE**

**PLEASE DO NOT WRITE ON THIS PAGE**

15  
BLANK PAGE

PLEASE DO NOT WRITE ON THIS PAGE

**PLEASE DO NOT WRITE ON THIS PAGE**

---

Permission to reproduce items where third-party owned material protected by copyright is included has been sought and cleared where possible. Every reasonable effort has been made by the publisher (OCR) to trace copyright holders, but if any items requiring clearance have unwittingly been included, the publisher will be pleased to make amends at the earliest possible opportunity.

OCR is part of the Cambridge Assessment Group. Cambridge Assessment is the brand name of University of Cambridge Local Examinations Syndicate (UCLES), which is itself a department of the University of Cambridge.