

ADVANCED GCE
HEALTH AND SOCIAL CARE
Unit 12: Anatomy and Physiology in Practice

F921

Candidates answer on the question paper

OCR Supplied Materials:
None

Other Materials Required:
None

Tuesday 27 January 2009
Afternoon

Duration: 1 hour 30 minutes



* C O P / T 7 3 0 2 2 *

Candidate Forename		Candidate Surname	
--------------------	--	-------------------	--

Centre Number						Candidate Number				
---------------	--	--	--	--	--	------------------	--	--	--	--

INSTRUCTIONS TO CANDIDATES

- Write your name clearly in capital letters, your Centre Number and Candidate Number in the boxes above.
- Use black ink. Pencil may be used for graphs and diagrams only.
- Read each question carefully and make sure that you know what you have to do before starting your answer.
- Answer **all** the questions.
- Do **not** write in the bar codes.
- Write your answer to each question in the space provided, however additional paper may be used if necessary.

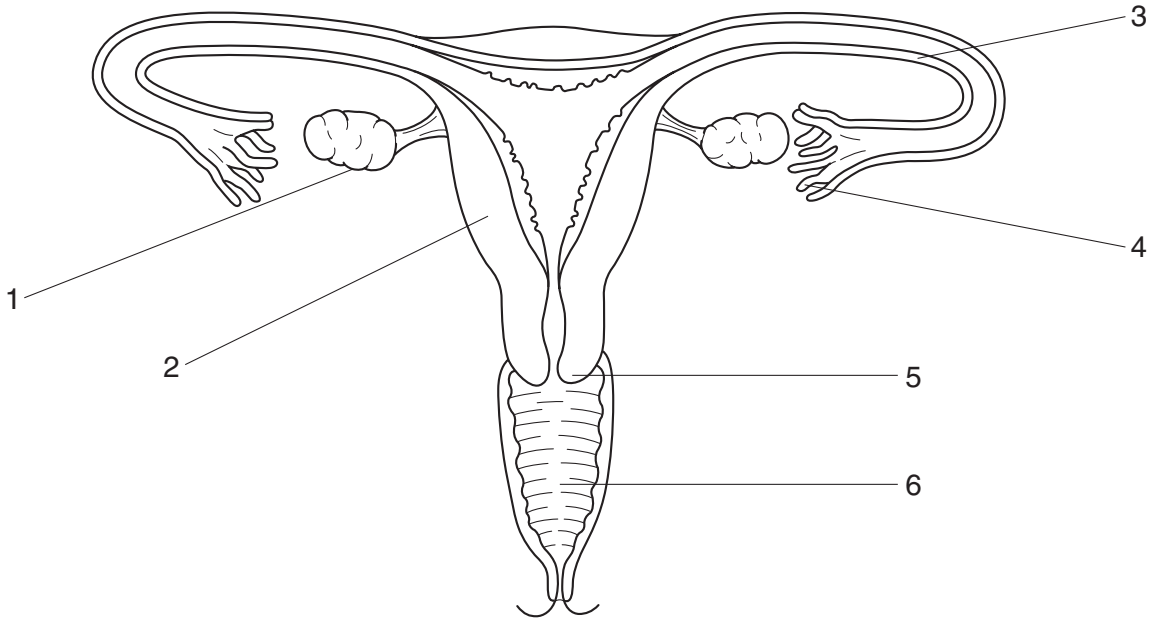
INFORMATION FOR CANDIDATES

- The number of marks is given in brackets [] at the end of each question or part question.
- The total number of marks for this paper is **100**.
- You will be awarded marks for the quality of written communication where an answer requires a piece of extended writing.
- This document consists of **16** pages. Any blank pages are indicated.

Examiner's Use Only:			
1			
2			
3			
4			
5			
Total			

1

2

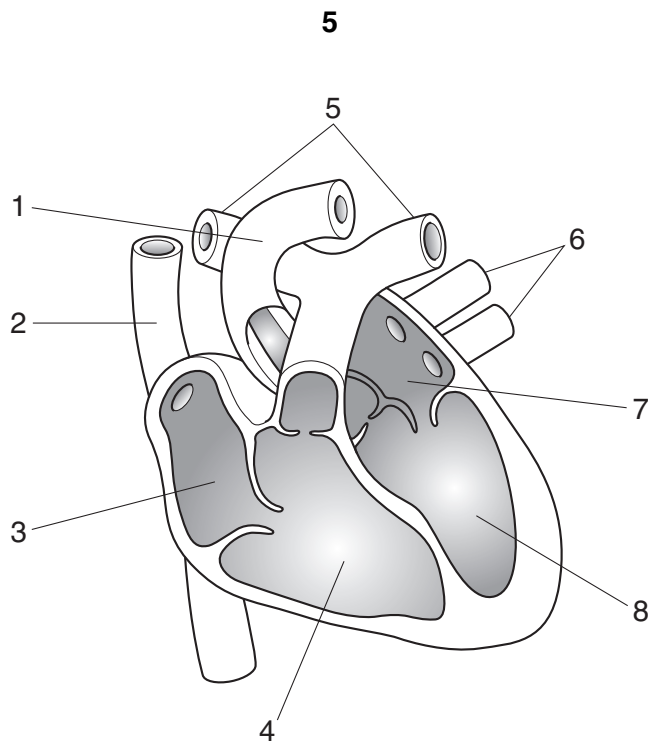


Female Reproductive System

(a) Identify each of the structures labelled 1 – 6.

- 1
- 2
- 3
- 4
- 5
- 6 [6]

2



(a) Identify each of the structures labelled 1 – 8 in the diagram.

- 1
- 2
- 3
- 4
- 5
- 6
- 7
- 8 [8]

.....

.....

.....

..... [8]

[Total: 20]

3 (a) Describe **two** functions of each of the following.

Gall Bladder

.....

.....

.....

Liver

.....

.....

.....

Large Bowel

.....

.....

.....

Pancreas

.....

.....

.....

Small Bowel

.....

.....

.....

Stomach

.....

.....

..... [12]

PLEASE DO NOT WRITE ON THIS PAGE

15
BLANK PAGE

PLEASE DO NOT WRITE ON THIS PAGE

PLEASE DO NOT WRITE ON THIS PAGE



Permission to reproduce items where third-party owned material protected by copyright is included has been sought and cleared where possible. Every reasonable effort has been made by the publisher (OCR) to trace copyright holders, but if any items requiring clearance have unwittingly been included, the publisher will be pleased to make amends at the earliest possible opportunity.

OCR is part of the Cambridge Assessment Group. Cambridge Assessment is the brand name of University of Cambridge Local Examinations Syndicate (UCLES), which is itself a department of the University of Cambridge.