

ADVANCED GCE
HEALTH AND SOCIAL CARE
Unit 12: Anatomy and Physiology in Practice

F921

Candidates answer on the Question Paper

OCR Supplied Materials:
None

Other Materials Required:
None

Thursday 28 January 2010
Afternoon

Duration: 1 hour 30 minutes



Candidate Forename		Candidate Surname	
--------------------	--	-------------------	--

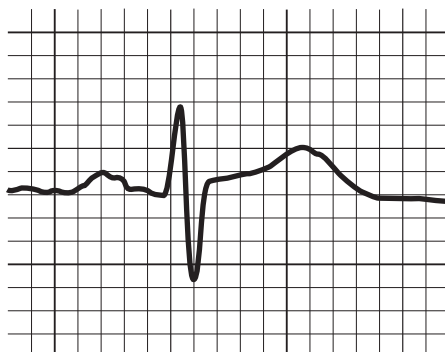
Centre Number						Candidate Number				
---------------	--	--	--	--	--	------------------	--	--	--	--

INSTRUCTIONS TO CANDIDATES

- Write your name clearly in capital letters, your Centre Number and Candidate Number in the boxes above.
- Use black ink. Pencil may be used for graphs and diagrams only.
- Read each question carefully and make sure that you know what you have to do before starting your answer.
- Answer **all** the questions.
- Do **not** write in the bar codes.
- Write your answer to each question in the space provided, however additional paper may be used if necessary.

INFORMATION FOR CANDIDATES

- The number of marks is given in brackets [] at the end of each question or part question.
- The total number of marks for this paper is **100**.
- You will be awarded marks for the quality of written communication where an answer requires a piece of extended writing.
- This document consists of **12** pages. Any blank pages are indicated.



(a) The diagram shows a normal ECG trace. Indicate on the diagram with the appropriate letter where the following occur.

- A The P wave (contraction of the atria)
- B The QRS complex (contraction of the ventricles)
- C The T wave (the relaxation of the ventricles)

[3]

(b) Describe the flow of blood through the heart and the valves that it passes through starting at the vena cava and finishing at the aorta.

.....

.....

.....

.....

.....

.....

.....

.....

.....

.....

.....

.....

.....

.....

.....

.....

.....

.....

.....

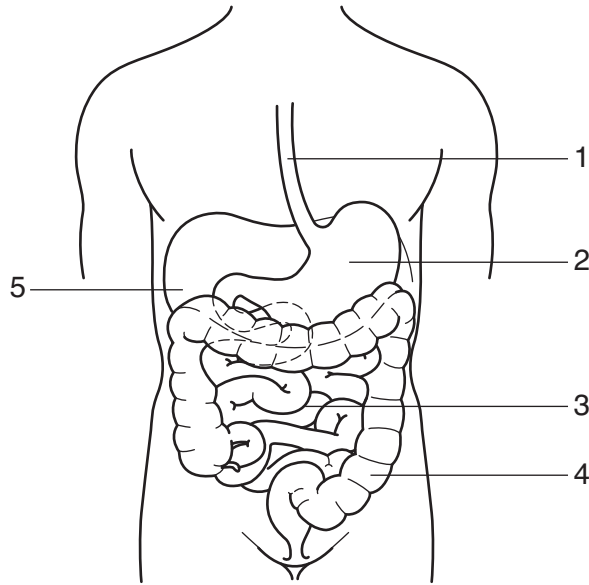
.....

.....

.....

.....

.....



Digestive System

(a) Name each of the structures labelled 1 – 5 in the diagram.

- 1
- 2
- 3
- 4
- 5 **[5]**

(b) Using a digestive dysfunction that you have studied describe its physiological effects. Describe how an individual's daily routines and lifestyle could be affected by having this dysfunction.

.....

.....

.....

.....

.....

.....

.....

.....

.....

.....

..... [9]

(c) Describe how the dysfunction that you have chosen can be treated.

..... [6]

[Total: 20]

Turn over

3 (a) Identify **one** dysfunction of the musculo-skeletal system that you have studied.
..... [1]

(b) Identify the **one** possible cause of the dysfunction and describe how it can be diagnosed.
.....
.....
.....
.....
.....
.....
.....
.....
.....
.....
.....
.....
.....
.....
.....
.....
.....
.....
.....
.....
.....
.....
.....
..... [5]

(c) Describe the effects of the dysfunction on the lifestyle of an individual.
.....
.....
.....
.....
.....
.....
.....
.....
.....
.....
.....
.....
.....
.....
.....
.....
.....
.....
.....
.....
.....
.....

.....

.....

.....

.....

.....

.....

.....

.....

.....

.....

.....

.....

.....

.....

.....

.....

.....

.....

..... [9]

(d) Describe how the dysfunction that you have chosen would be treated.

.....

.....

.....

.....

.....

.....

.....

.....

.....

.....

.....

.....

.....

.....

.....

.....

.....

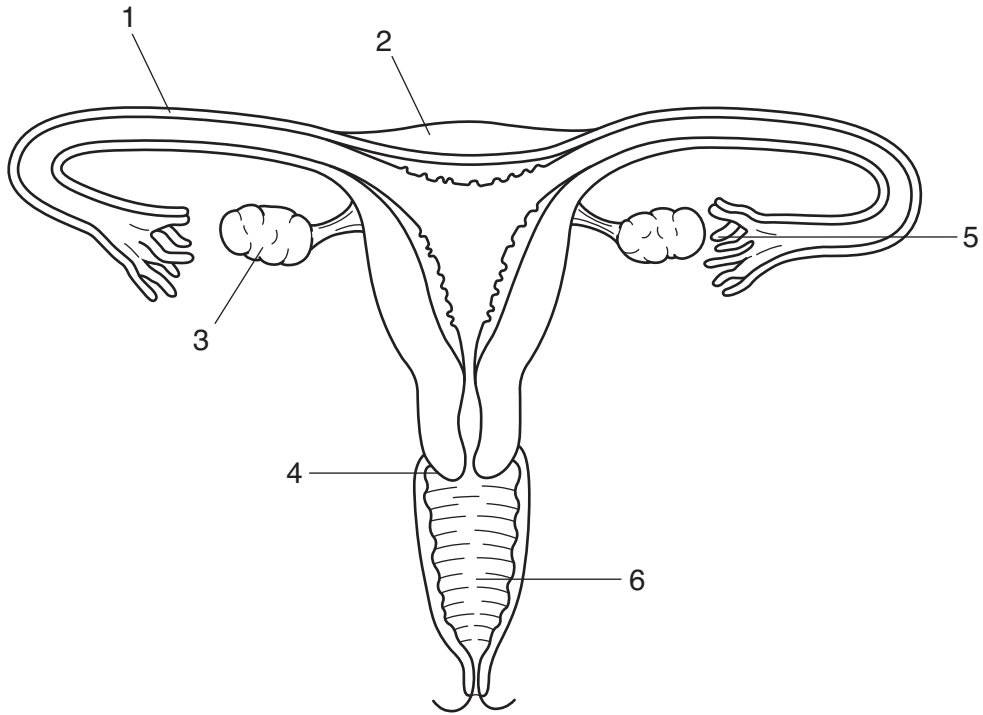
.....

.....

.....

..... [5]

[Total: 20]



Female Reproductive System

(a) Name each of the structures labelled 1 – 6 in the diagram.

- 1
- 2
- 3
- 4
- 5
- 6 [6]

5 Explain the possible causes of a named renal dysfunction that you have studied and describe the effects on the individual and their lifestyle.

.....
.....
.....
.....
.....
.....
.....
.....
.....
.....
.....
.....
.....
.....
.....
.....
.....
.....
.....
.....
.....
.....
.....
.....
.....
.....
.....
.....
.....
.....
.....
.....
.....
.....
.....
.....
.....
.....
.....
.....
.....
.....
.....

