

**ADVANCED SUBSIDIARY GCE
 HEALTH AND SOCIAL CARE**

F913

Unit 4: Health and Safety in Care Settings

TUESDAY 15 JANUARY 2008

Morning

Time: 1 hour 30 minutes

Candidates answer on the question paper
Additional materials (enclosed): None

Additional materials (required):
 Additional answer paper may be required



Candidate Forename

Candidate Surname

Centre Number

Candidate Number

INSTRUCTIONS TO CANDIDATES

- Write your name in capital letters, your Centre Number and Candidate Number in the boxes above.
- Use blue or black ink. Pencil may be used for graphs and diagrams only.
- Read each question carefully and make sure that you know what you have to do before starting your answer.
- Answer **all** the questions.
- Do **not** write in the bar codes.
- Do **not** write outside the box bordering each page.
- Write your answer to each question in the space provided.

INFORMATION FOR CANDIDATES

- The number of marks for each question is given in brackets [] at the end of each question or part question.
- The total number of marks for this paper is **100**.
- You will be awarded marks for the quality of written communication where an answer requires a piece of extended writing.

FOR EXAMINER'S USE

1	
2	
3	
4	
5	
6	
TOTAL	

This document consists of **15** printed pages and **1** blank page.

1 (a) Identify **two** functions of the Health and Safety Executive.

1

2 [2]

(b) State **one** way employers must inform their staff about basic Health and Safety information.

..... [1]



A



B



C

(c) Identify the **three** safety signs above. Explain how each is likely to reduce risk.

A

.....
.....
.....

B

.....
.....
.....

C

.....
.....
.....

[9]

(d) Name the legislation that controls the use of safety signs.

..... [1]

(e) Describe the difference in appearance between warning signs and prohibition signs.

.....

.....

.....

.....

..... [2]

[Total: 15]

2 (a) Identify **three** items of personal protective equipment (PPE) that could be worn by staff in a care setting. Describe how each protects the care worker from risk.

1

.....

.....

.....

2

.....

.....

.....

3

.....

.....

..... [6]

(b) (i) Name **one** piece of equipment that could be used by a care worker to help move a service user.

..... [1]

(ii) Identify **four** steps that should be taken by a care worker before moving and handling a service user. Describe the purpose of each of the steps.

1

.....

.....

.....

2

.....

.....

.....

3

.....

.....

.....

4

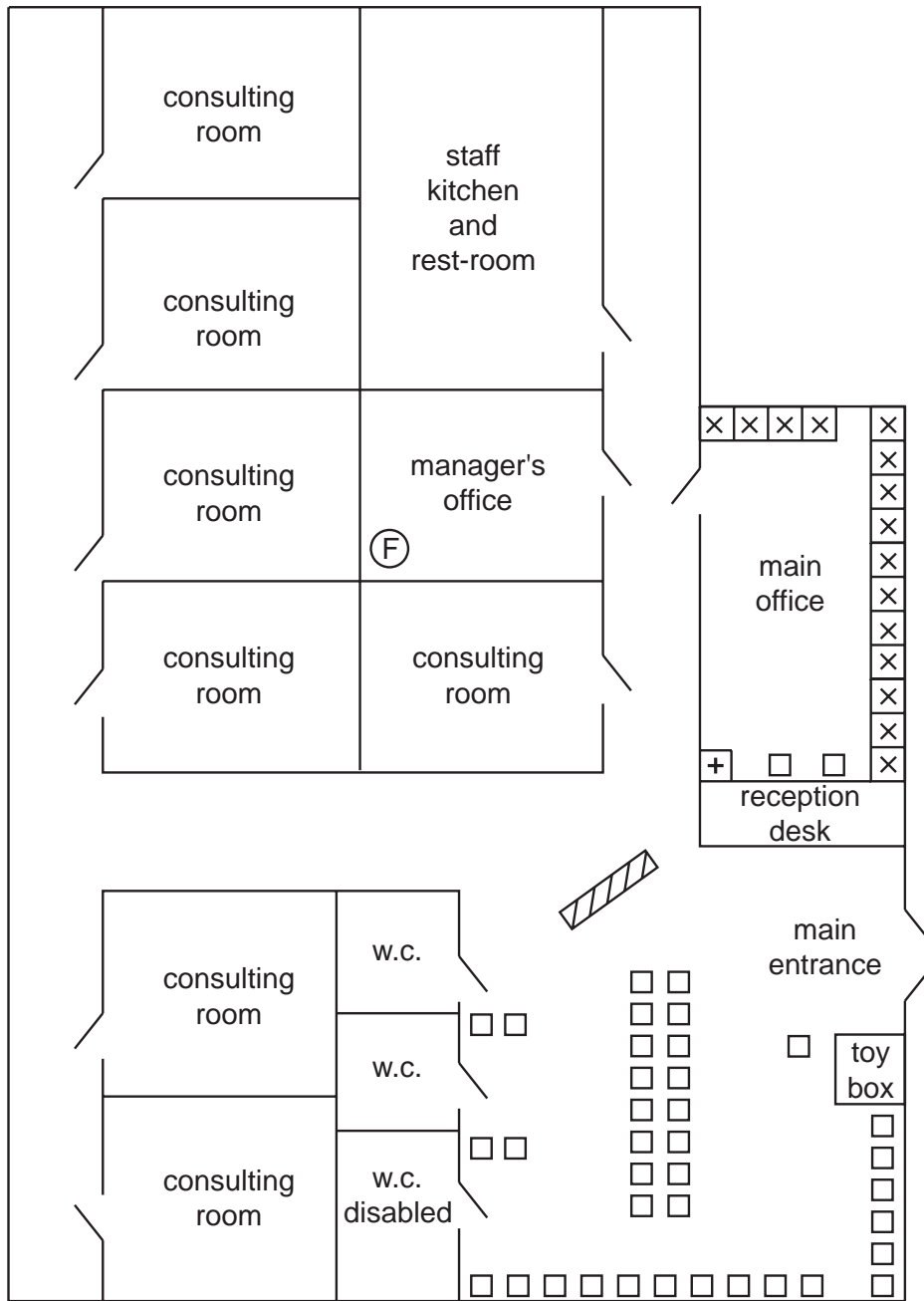
.....

.....

..... [8]

[Total: 15]

Plan of GP Surgery



- X filing cabinet
 - + First Aid box
 - door
- F fire extinguisher
 - chair
 - information leaflets stand

- 3 (a) The first three stages of risk assessment are to look for hazards, to assess who may be harmed, and to consider whether current precautions are adequate.

Carry out the first **three** stages of a risk assessment for the GP surgery as shown on the plan.

.....
.....
.....
.....
.....
.....
.....
.....
.....
.....
.....
.....
.....
.....
.....
.....
.....
.....
.....
.....
.....
.....
.....
.....
.....
.....
.....
.....
.....
.....
.....
.....
.....
.....
.....
.....
.....
.....
.....
.....
.....
.....
.....
.....

..... [15]

(b) The fourth stage of risk assessment is to document the findings. Discuss the importance of this stage to the staff working in the surgery.

..... [5]

4 (a) Identify **three** pieces of information that must be provided by an employer to employees concerning first aid provision.

- 1
- 2
- 3 [3]

(b) Identify **three** pieces of information that should be included in an accident report. Give a different reason why each is included.

- 1
.....
.....
.....
- 2
.....
.....
.....
- 3
.....
.....
..... [6]

(c) (i) Name the legislation that governs the reporting of accidents.
..... [1]

- (ii) Identify **three** situations which must be reported under this legislation.
- 1
 - 2
 - 3 [3]

(iii) Discuss benefits to service users of this legislation.

.....
.....
.....
.....
.....
.....
.....
.....
.....
.....
.....
.....
.....
.....
.....
.....
.....
.....
.....
.....
.....
..... [7]

[Total: 20]

5 (a) Identify and explain **four** precautions that could be used in a residential home to safeguard the security and privacy of residents.

1

.....

.....

.....

2

.....

.....

.....

3

.....

.....

.....

4

.....

.....

..... [8]

(b) Analyse the benefits of having security and privacy precautions in place.

..... [7]

[Total: 15]

6 (a) Identify **three** pieces of equipment that could be present in a care setting to prevent the spread of fire. Describe how each piece of equipment carries out this function.

1

.....

.....

.....

2

.....

.....

.....

3

.....

.....

..... [6]

15
BLANK PAGE

PLEASE DO NOT WRITE ON THIS PAGE

PLEASE DO NOT WRITE ON THIS PAGE

Permission to reproduce items where third-party owned material protected by copyright is included has been sought and cleared where possible. Every reasonable effort has been made by the publisher (OCR) to trace copyright holders, but if any items requiring clearance have unwittingly been included, the publisher will be pleased to make amends at the earliest possible opportunity.

OCR is part of the Cambridge Assessment Group. Cambridge Assessment is the brand name of University of Cambridge Local Examinations Syndicate (UCLES), which is itself a department of the University of Cambridge.