



Oxford Cambridge and RSA

Monday 19 October 2020 – Morning

A Level Geology

H414/03 Practical skills in geology

Insert

Time allowed: 1 hour 30 minutes



INSTRUCTIONS

- Do **not** send this Insert for marking. Keep it in the centre or recycle it.

INFORMATION

- This Insert contains Fig. 2.1, Fig. 2.2 and the map excerpt.
- This document has **8** pages.

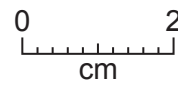
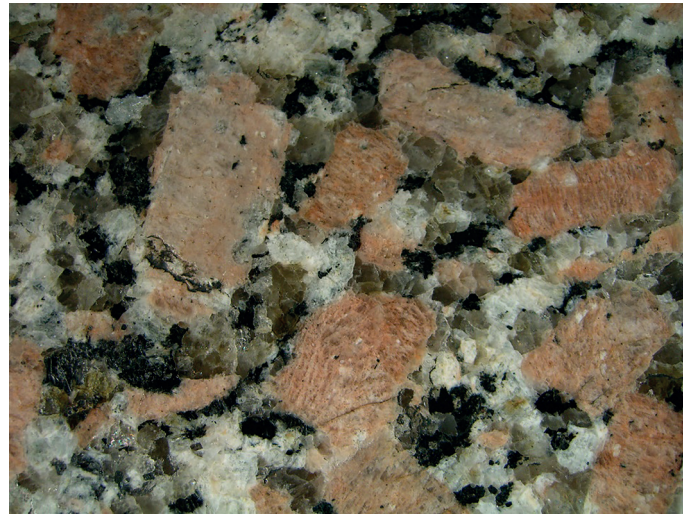


Fig. 2.1

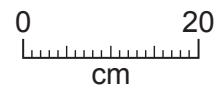
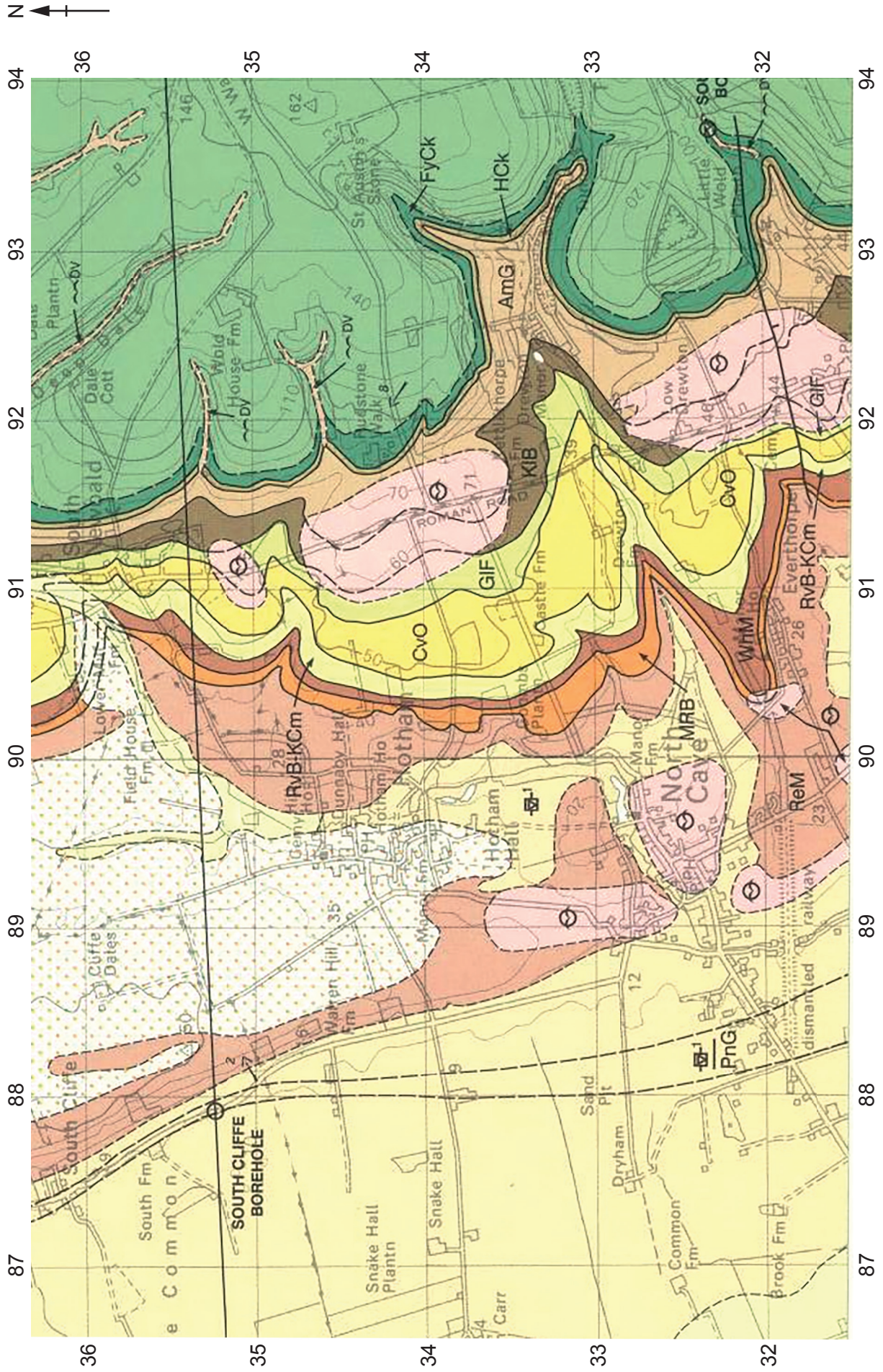
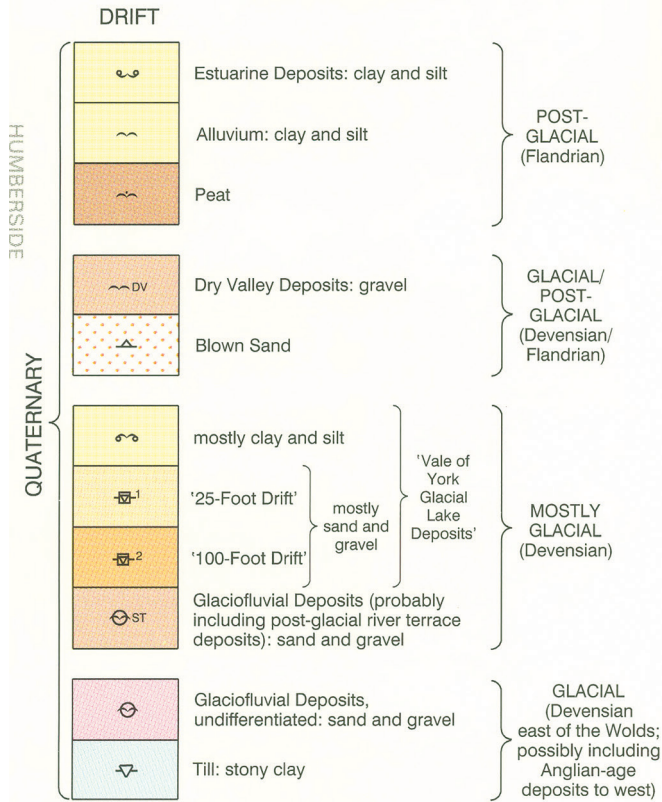


Fig. 2.2

BEVERLEY 1:50 000 (Solid and Drift)



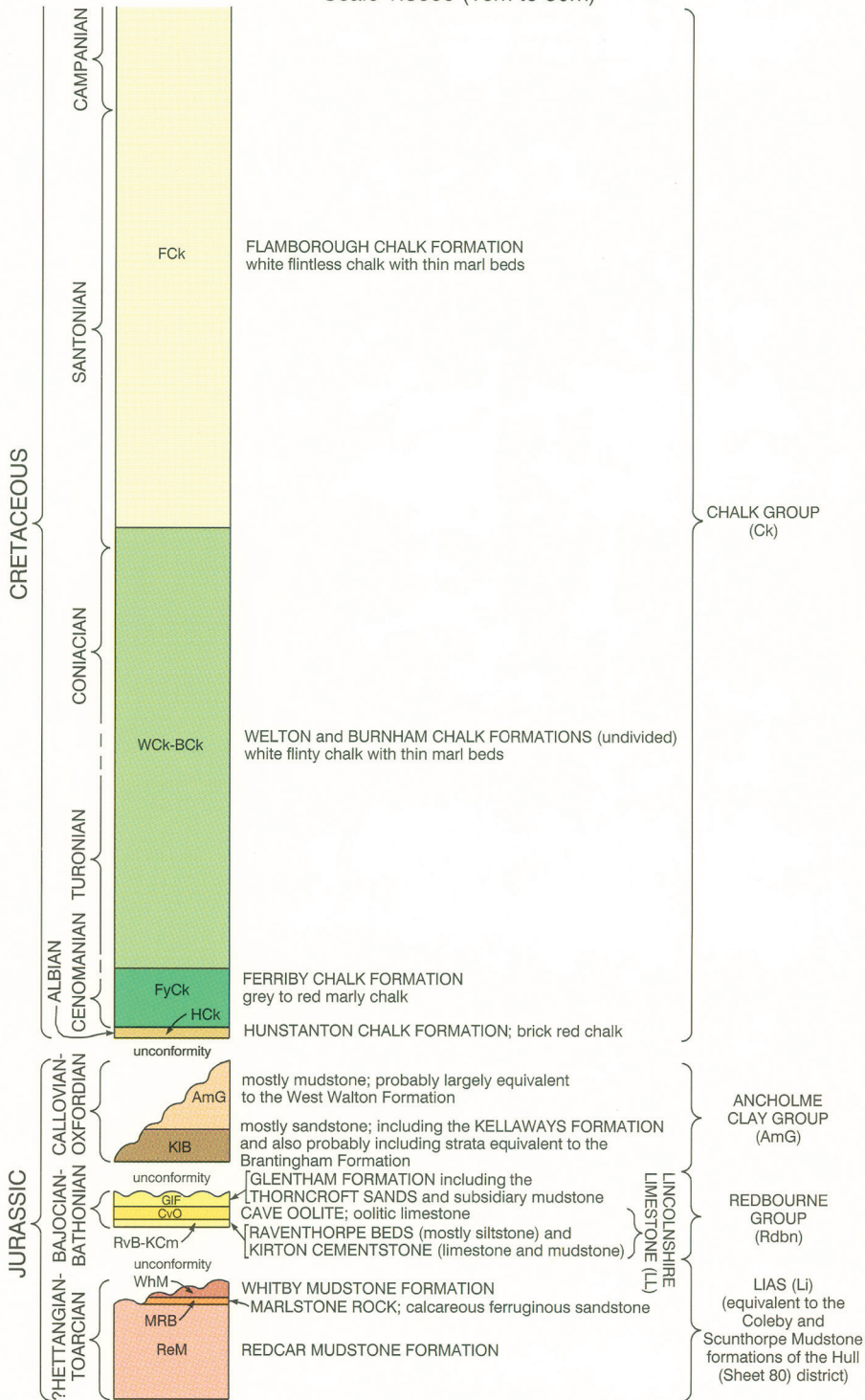
KEY TO GEOLOGICAL SYMBOLS AND COLOURS



See also Generalized Vertical Section

- Inclined strata, dip in degrees
- Geological boundary, Drift
- Geological boundary, Solid
- Fault at surface, crossmark indicates downthrow side
- Broken lines denote inferred boundaries
- Borehole
- Approximate position of Ipswichian (c125 000 BP) shoreline, east of which rockhead is below Ordnance Datum (OD).
- Symbol indicates Drift deposit at surface and the Solid formation at rockhead; other Drift deposits may intervene

GENERALIZED VERTICAL SECTION
JURASSIC AND CRETACEOUS STRATA
 Scale 1:3000 (1cm to 30m)



OCR

Oxford Cambridge and RSA

Copyright Information

OCR is committed to seeking permission to reproduce all third-party content that it uses in its assessment materials. OCR has attempted to identify and contact all copyright holders whose work is used in this paper. To avoid the issue of disclosure of answer-related information to candidates, all copyright acknowledgements are reproduced in the OCR Copyright Acknowledgements Booklet. This is produced for each series of examinations and is freely available to download from our public website (www.ocr.org.uk) after the live examination series.

If OCR has unwittingly failed to correctly acknowledge or clear any third-party content in this assessment material, OCR will be happy to correct its mistake at the earliest possible opportunity.

For queries or further information please contact The OCR Copyright Team, The Triangle Building, Shaftesbury Road, Cambridge CB2 8EA.

OCR is part of the Cambridge Assessment Group; Cambridge Assessment is the brand name of University of Cambridge Local Examinations Syndicate (UCLES), which is itself a department of the University of Cambridge.