



Oxford Cambridge and RSA

Monday 18 January 2021 – Afternoon

Level 3 Cambridge Technical in Sport and Physical Activity

05828/05829/05872 Unit 4: Working safely in sport, exercise, health and leisure

Time allowed: 1 hour 30 minutes

C402/2101



No extra materials are needed.

Please write clearly in black ink.

Centre number

Candidate number

First name(s) _____

Last name _____

Date of Birth

INSTRUCTIONS

- Use black ink. You can use an HB pencil, but only for graphs and diagrams.
- Answer **all** the questions.
- Write your answer to each question in the space provided. If you need extra space use the lined pages at the end of this booklet. The question numbers must be clearly shown.

INFORMATION

- The total mark for this paper is **70**.
- The marks for each question are shown in brackets [].
- Quality of written communication will be assessed in questions marked with an asterisk (*).
- This document has **16** pages.

ADVICE

- Read each question carefully before you start your answer.

FOR EXAMINER USE ONLY	
Question No	Mark
Section A: 1-10	/20
Section B: 11	/8
12	/8
13	/8
14	/8
15	/18
Total	/70

Section A

Answer **all** the questions.

1 Indicate whether each of the following statements is true or false by putting a tick (✓) in the box.

(a) RIDDOR is used to record all first aid incidents.

True

False

(b) The Equality Act (2010) ensures that facilities in leisure centres are properly maintained.

True

False

(c) One role of the DBS is to perform background checks on potential employees.

True

False

[3]

2 A psychological hazard is one type of hazard. Identify **three** other types of hazard.

1

2

3

[3]

3 Give **two** examples of Personal Protective Equipment (PPE) that staff would use in a leisure centre.

1

2

[2]

4 Identify **one** type of risk assessment.

.....**[1]**

5 State **two** reasons why it is important to have a safeguarding lead at a sports centre

1.....
.....
2.....
..... [2]

6 Describe a suitable first aid response for a patient with a large, open wound on their leg.

.....
..... [1]

7 Identify **two** sporting environments where a chemical leak might occur.

1.....
2..... [2]

8 'Organiser' is one role of a sports coach. Name **three** other roles.

1.....
2.....
3..... [3]

9 Identify **two** special population groups who should be considered when thinking about 'duty of care'.

1.....
2..... [2]

10 Identify **one** requirement of the first aid at work regulations.

..... [1]

Section B

Answer **all** the questions.

11 Staff need to be cautious of people using mobile phones and cameras within sport and leisure facilities.

(a) Explain how security procedures could reduce the risk of people taking unauthorised photos of children.

Security procedure 1

Explanation

.....

.....

.....

.....

Security procedure 2

Explanation

.....

.....

.....

.....

[4]

(b) It is suspected that someone has taken unauthorised pictures in a leisure centre.
Describe **four** steps the manager should take in this situation.

1

.....

.....

2

.....

.....

3

.....

.....

4

.....

.....

[4]

12 Fig. 12.1 shows some items from a first aid box.

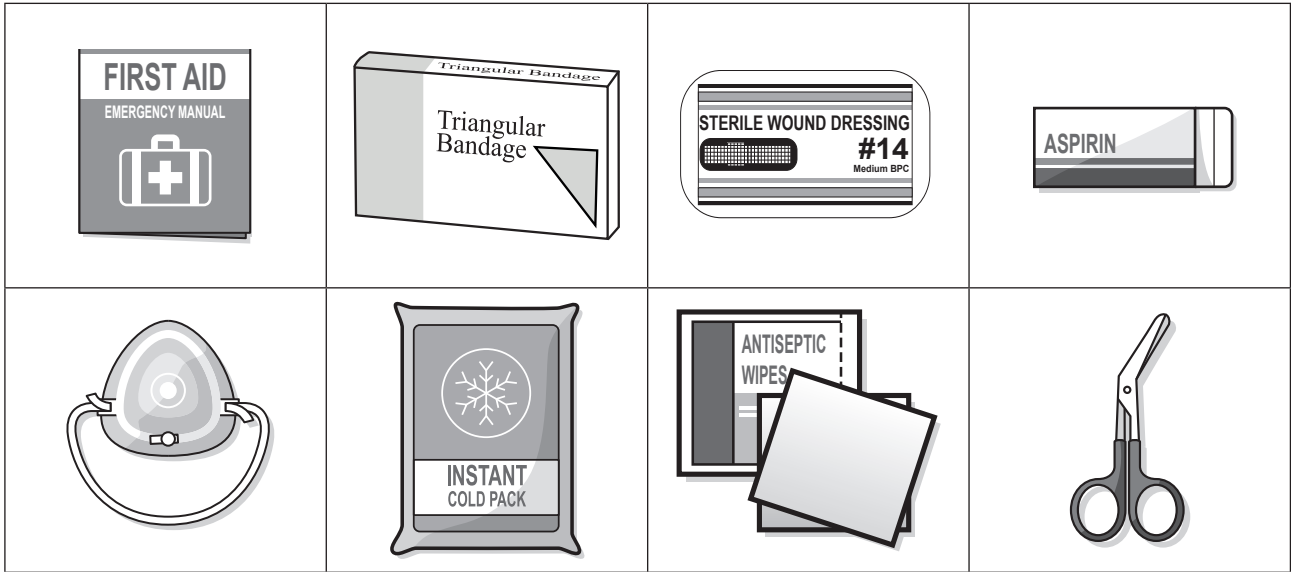


Fig. 12.1

(a) Identify **four** items that are missing from Fig. 12.1 from the HSE’s minimum requirements for a first aid kit.

- 1
- 2
- 3
- 4

[4]

(b) Describe **two** uses for each of the following items of first aid equipment.

Triangular bandage

- 1
-
- 2
-

Sterile wound dressings

- 1
-
- 2
-

[4]

A series of 25 horizontal dotted lines spanning the width of the page, intended for writing.

14 Isobel is a PE teacher in a secondary school. She has a duty of care to ensure the safety of her students when they take part in sport and physical activity.

(a) Describe why Isobel gets her pupils to complete a warm up before they play sport.

.....
.....
.....
.....
.....
.....
.....
.....
.....

[4]

(b) Give **two** examples of emotional abuse that could occur between students.

1

.....

2

.....

[2]

(c) Give **two** examples of neglect which could happen in a sport and leisure setting.

1

.....

2

.....

[2]

- 15 Catherine is the owner of a dance school. She needs to complete risk assessments for her dance classes.

(a) Complete the empty boxes on the risk assessment form below.

RISK ASSESSMENT FORM - DANCE					
Hazard	Risk	Initial Rating (Low, Medium, High)	Control Measures	Final Rating (Low, Medium, High)	Additional Action Required
Water spillage on the hall floor	People might slip over and injure themselves	Medium	Put a 'wet floor' sign next to the spillage	Low	Wipe/dry the floor
Dropped glass bottle (broken glass on floor)	1.	Medium	2.	Low	3.
Inappropriate footwear	4.	Medium/High	5.	Low	6.
Students attempting somersaults and lifts on solid floor	7.	High	Provide safety mats	Low	8.

[8]

(b) Give examples of how Catherine could follow the safeguarding requirements below:

Effective recruitment and selection of staff

.....
.....
.....
.....
.....

Effective training and support for staff

.....
.....
.....
.....
.....

Having clear lines of accountability.....

.....
.....
.....
.....
.....

[6]

(c) Describe **four** examples of the types of emergencies that could occur in Catherine’s dance classes.

1

.....

2

.....

3

.....

4

..... [4]

END OF QUESTION PAPER

ADDITIONAL ANSWER SPACE

If additional answer space is required, you should use the following lined pages. The question numbers must be clearly shown in the margins – for example, 11(a) or 12(b).

A vertical line on the left side of the page is followed by 25 horizontal dotted lines, providing a ruled area for writing answers.

A series of horizontal dotted lines for writing, spanning the width of the page.

A series of horizontal dotted lines for writing, spanning the width of the page.

A series of horizontal dotted lines for writing, spanning the width of the page.



Oxford Cambridge and RSA

Copyright Information:

OCR is committed to seeking permission to reproduce all third-party content that it uses in its assessment materials. OCR has attempted to identify and contact all copyright holders whose work is used in this paper. To avoid the issue of disclosure of answer-related information to candidates, all copyright acknowledgements are reproduced in the OCR Copyright Acknowledgements Booklet. This is produced for each series of examinations and is freely available to download from our public website (www.ocr.org.uk) after the live examination series.

If OCR has unwittingly failed to correctly acknowledge or clear any third-party content in this assessment material OCR will be happy to correct its mistake at the earliest possible opportunity.

For queries or further information please contact the Copyright Team, OCR (Oxford Cambridge and RSA Examinations), The Triangle Building, Shaftesbury Road, Cambridge CB2 8EA.

OCR is part of the Cambridge Assessment Group. Cambridge Assessment is the brand name of University of Cambridge Local Examinations Syndicate (UCLES), which is itself a department of the University of Cambridge.