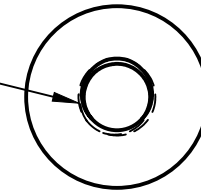
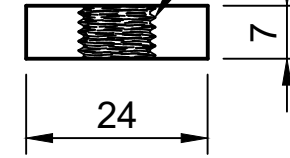


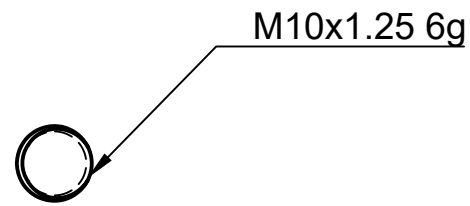
M10x1.25 6H x 10/10



M10x1.25 6H x 10/10

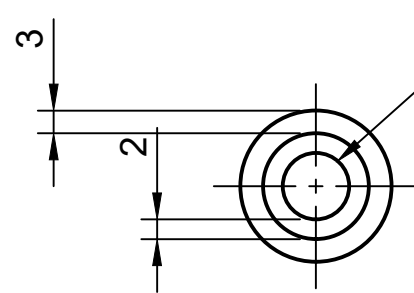
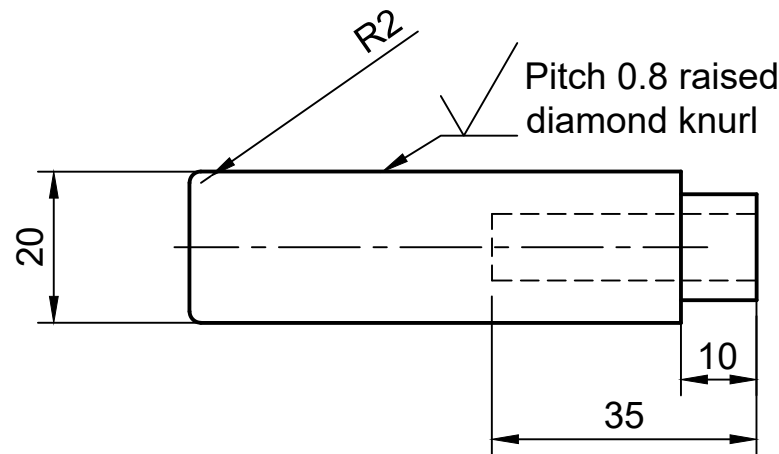
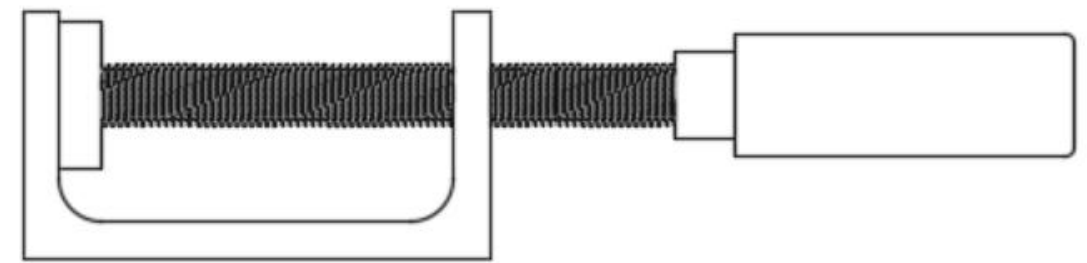


M10x1.25 6H x 6/6



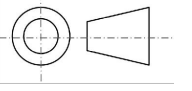
M10x1.25 6g

Assembly Diagram (NTS)



M10x1.25 6H

Clamp body	ALUM CHNL 76 X 30
Threaded bar	D10 x 1.25
Handle	BDMS D20
End stop	BMS D25

Dept.	Technical reference	Created by	Approved by
Not to be used for live assessment Scale 1:1 printed on A3	Document type	Document status	
	Replacement clamp		Sample assessment material
Title		DWG No.	
Rev.	Date of issue	Sheet	
		1/1	