



Oxford Cambridge and RSA

**Tuesday 21 June 2022 – Morning**

**A Level Geology**

**H414/03** Practical skills in geology

Insert

**Time allowed: 1 hour 30 minutes**



**INSTRUCTIONS**

- Do **not** send this Insert for marking. Keep it in the centre or recycle it.

**INFORMATION**

- This Insert contains **Fig. 1.1**, **Fig. 2.1** and **Fig. 3.1**.
- This document has **8** pages.

Fig. 1.1



1 cm

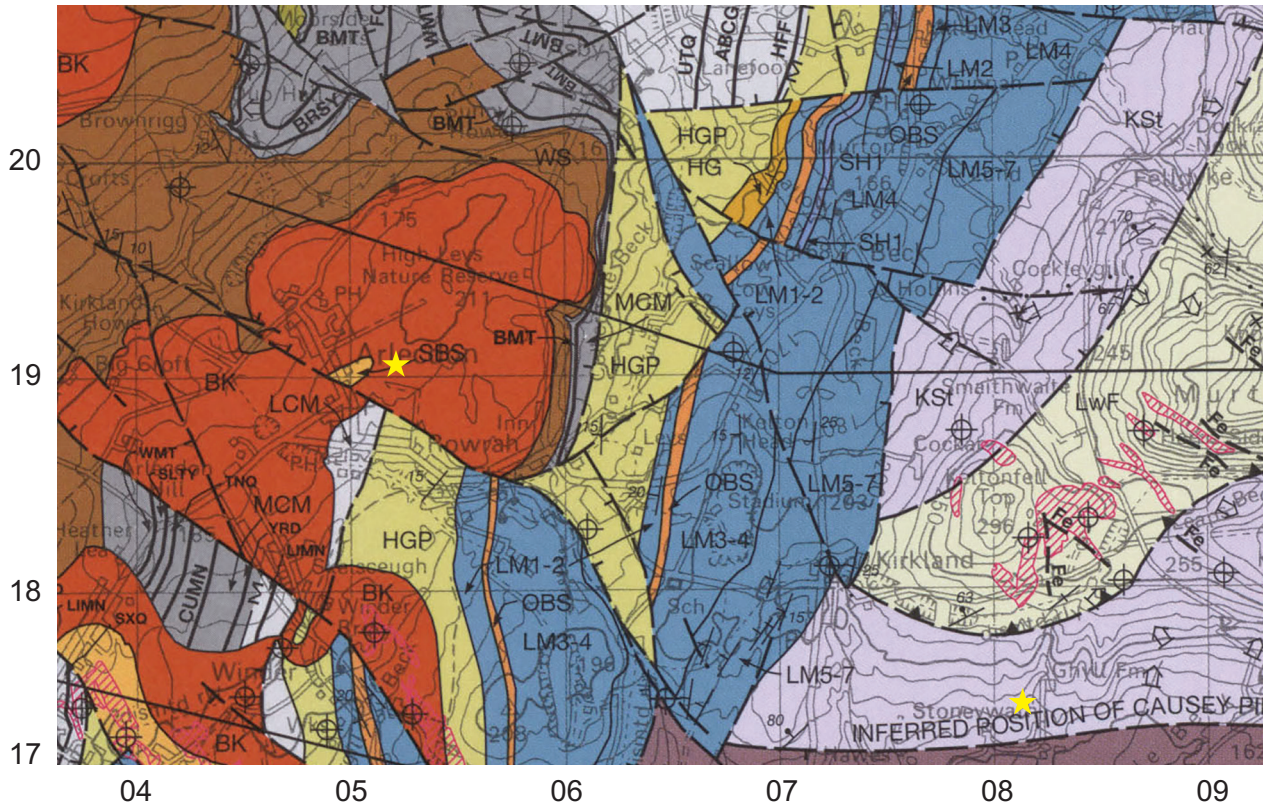
Fig. 2.1



1 cm



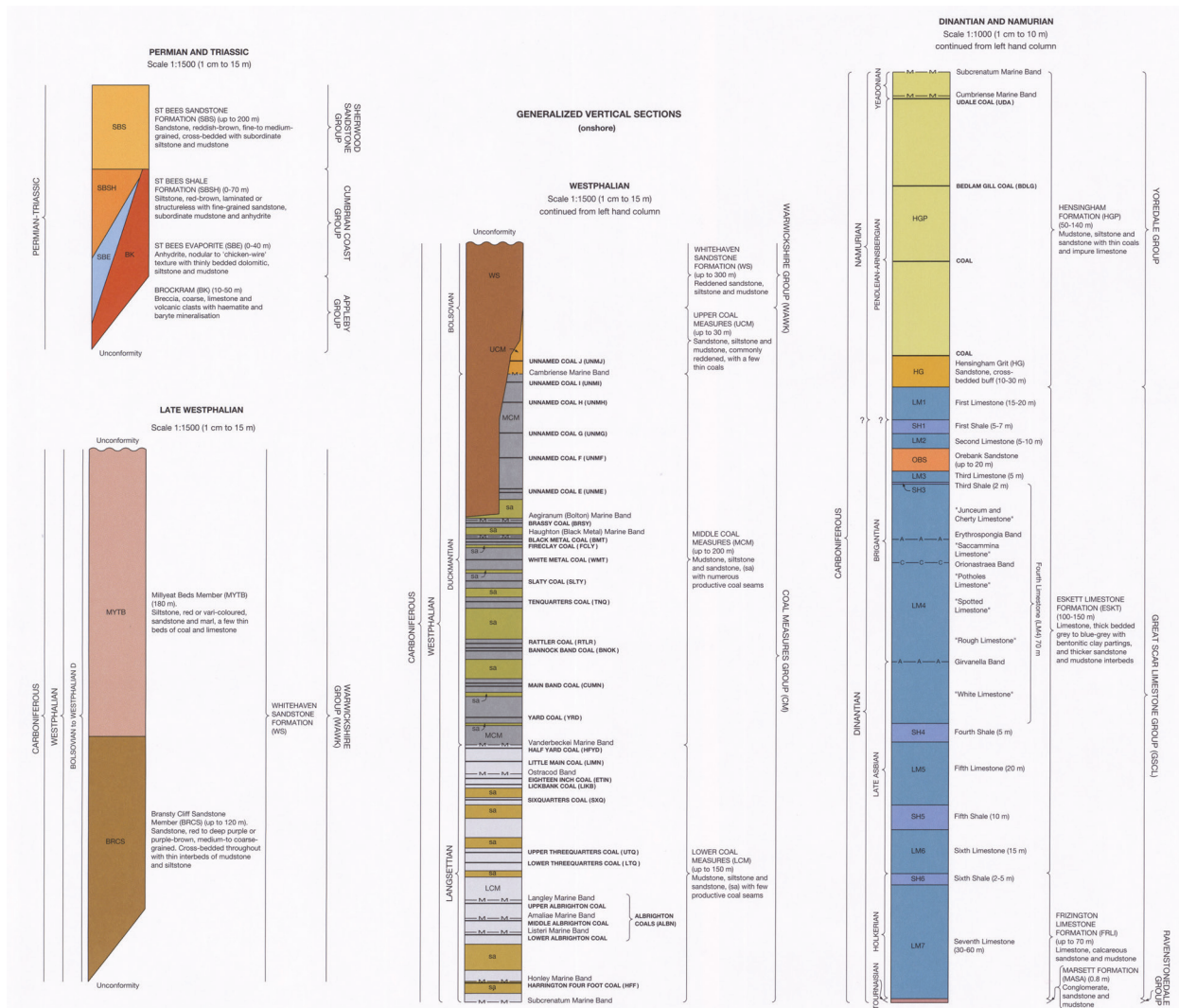
Fig. 3.1 1:50 000 scale geological map excerpt (Whitehaven)



Key

	Geological boundary, Bedrock
	Fault at rockhead, crossmark on downthrow side
	Thrust, barbs on the hanging wall side
	Coal
	Marine band
	Coral band
	Algal band
	Limit of hydrothermally altered rocks within the Grummock Water and Ennerdale Intrusion aureoles; + towards intrusion
	Axial plane trace of antiform
	Axial plane trace of synform
	Mineral veins, Pb Lead, Fe Iron (Haematite)
	Horizontal strata
	Inclined strata, dip in degrees
	Vertical strata
	Inclined strata, way up uncertain, dip in degrees
	Pit or mineshaft, abandoned
	Adit or mine mouth, abandoned with orientation showing direction of entry
	Area of Haematite undermining

Summary Section







---

**OCR**  
Oxford Cambridge and RSA

**Copyright Information**

OCR is committed to seeking permission to reproduce all third-party content that it uses in its assessment materials. OCR has attempted to identify and contact all copyright holders whose work is used in this paper. To avoid the issue of disclosure of answer-related information to candidates, all copyright acknowledgements are reproduced in the OCR Copyright Acknowledgements Booklet. This is produced for each series of examinations and is freely available to download from our public website ([www.ocr.org.uk](http://www.ocr.org.uk)) after the live examination series. If OCR has unwittingly failed to correctly acknowledge or clear any third-party content in this assessment material, OCR will be happy to correct its mistake at the earliest possible opportunity.

For queries or further information please contact The OCR Copyright Team, The Triangle Building, Shaftesbury Road, Cambridge CB2 8EA.

OCR is part of Cambridge University Press & Assessment, which is itself a department of the University of Cambridge.