

Thursday 18 May 2023 – Afternoon

AS Level Mathematics A

H230/01 Pure Mathematics and Statistics

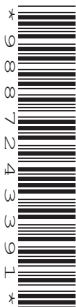
Printed Answer Booklet

Time allowed: 1 hour 30 minutes



You must have:

- Question Paper H230/01 (inside this document)
- a scientific or graphical calculator



Please write clearly in black ink. **Do not write in the barcodes.**

Centre number

--	--	--	--	--

Candidate number

--	--	--	--

First name(s)

Last name

INSTRUCTIONS

- Use black ink. You can use an HB pencil, but only for graphs and diagrams.
- Write your answer to each question in the space provided in the **Printed Answer Booklet**. If you need extra space use the lined pages at the end of the Printed Answer Booklet. The question numbers must be clearly shown.
- Answer **all** the questions.
- Where appropriate, your answer should be supported with working. Marks might be given for using a correct method, even if your answer is wrong.
- Give non-exact numerical answers correct to **3** significant figures unless a different degree of accuracy is specified in the question.
- The acceleration due to gravity is denoted by $g \text{ ms}^{-2}$. When a numerical value is needed use $g = 9.8$ unless a different value is specified in the question.

INFORMATION

- The total mark for this paper is **75**.
- The marks for each question are shown in brackets [].
- This document has **16** pages.

ADVICE

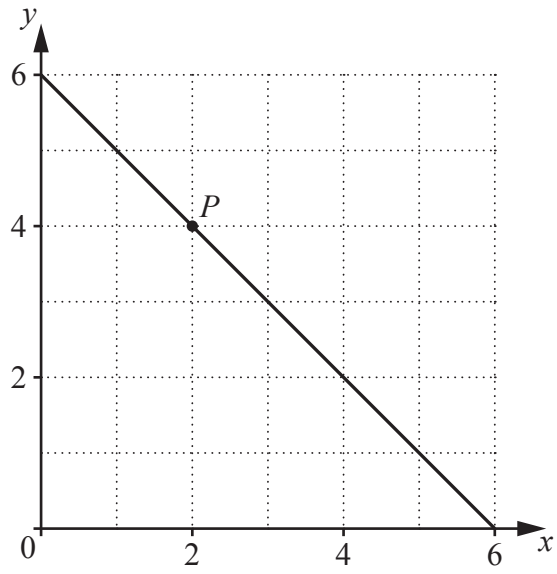
- Read each question carefully before you start your answer.

Section A

Pure Mathematics

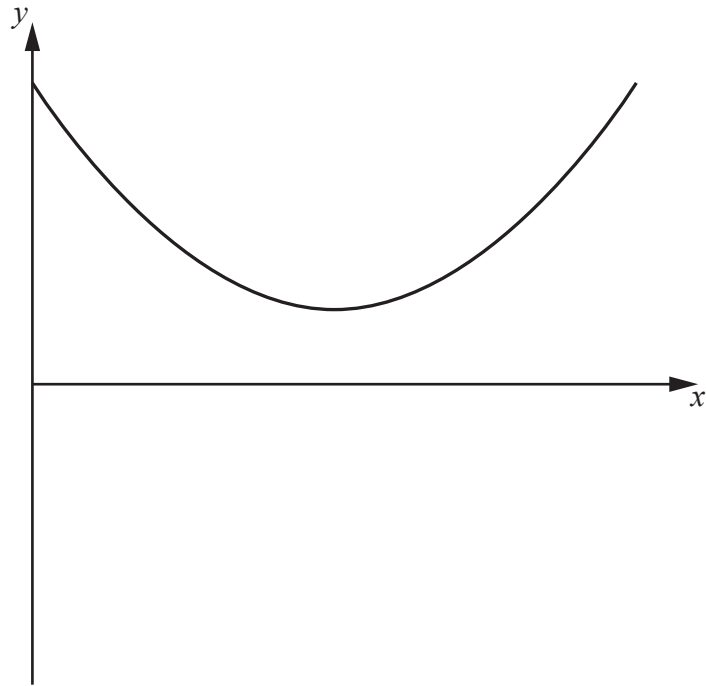
1(a)	
1(b)	

2(b)



2(c)

3(a)



3(b)

DO NOT WRITE IN THIS SPACE

6(a)	
6(b)	
6(c)	

7(a)(i)	
7(a)(ii)	
7(b)	

11
Section B
Statistics

9(a)	
9(b)	
10(a)	

10(b)(i)	
10(b)(ii)	
10(c)	
10(d)	

11(a)	
11(b)	
11(c)(i)	
11(c)(ii)	

12(a)	<u>Fig. 1</u>
	<u>Fig. 2</u>
12(b)	<u>Fig. 1</u>
	<u>Fig. 2</u>
12(c)	

