



Oxford Cambridge and RSA

Tuesday 16 May 2023 – Afternoon

AS Level Media Studies

H009/01 Media today

Time allowed: 2 hours



You must have:

- the OCR 12-page Answer Booklet

INSTRUCTIONS

- Use black ink.
- Write your answer to each question in the Answer Booklet. The question numbers must be clearly shown.
- Fill in the boxes on the front of the Answer Booklet.
- Answer **all** the questions.

INFORMATION

- The total mark for this paper is **70**.
- The marks for each question are shown in brackets [].
- Quality of extended response will be assessed in questions marked with an asterisk (*).
- This document has **8** pages.

ADVICE

- Read each question carefully before you start your answer.

Source A – front cover of *The Big Issue* (issue 1506, 28 March 2022)



Source A is the front cover of *The Big Issue* (28 March 2022). It features Russell Brand, an English writer, broadcaster, YouTuber and comedian who has been active since the early 2000s. It also refers to rock band Muse and the popular Channel 4 sitcom *Derry Girls*.

SECTION A

The Media Theoretical Framework

- 1 Explain how economic contexts can influence the film industry. Use Disney's *The Jungle Book* (2016) to support your answer. [5]
- 2 Analyse how the front cover of *The Big Issue* (**Source A**) uses media language to appeal to audiences. [10]
- 3 Explain how issues of control and ownership can influence the content of public service broadcast (PSB) radio. Use *The Radio One Breakfast Show (R1BS)* to support your answer. [10]

SECTION B

Long Form Television Drama

In this question use your knowledge and understanding from your full course of study, including different areas of the theoretical framework and media contexts.

Use **examples** from the long form television drama you have studied.

| Long Form Television Dramas |
|--|
| <i>Mr Robot</i> : (eps1.0_hellofriend.mov', season 1, episode 1, June 2015) |
| <i>House of Cards</i> : ('Chapter 1', season 1, episode 1, January 2013) |
| <i>Homeland</i> : (season 1, episode 1, October 2011) |
| <i>Stranger Things</i> : ('The Vanishing of Will Byers', season 1, episode 1, July 2016) |

- 4* 'The codes and conventions of long form television dramas are influenced by the need to appeal to an active audience.'

Discuss how far you agree with this statement in relation to the set episode of the long form television drama you have studied.

In your answer you must:

- explain the relationship between active audiences and long form television drama
- analyse how the need to appeal to different types of audience has influenced the key codes and conventions in the set episode you have studied
- use relevant academic ideas and arguments in your analysis
- make judgements and reach conclusions about how far you agree with the statement.

[20]

BLANK PAGE

Turn over for the next question

Study Sources B and C and then answer Questions 5 and 6.

Source B – Front page of the *Daily Mail* (17 April 2021)

Daily Mail
SATURDAY, APRIL 17, 2021 www.dailymail.co.uk **Daily newspaper of the year** £1.10

FREE INSIDE TWO ROYAL MAGAZINES

PLUS WILL YOU FIND A £1,000 GOLDEN CHEQUE INSIDE THIS PAPER
SEE PAGE 56
PLUS £1M* GAMECARD INSIDE WEEKEND
*TOTAL PRIZE FUND ACROSS ALL GOLDEN BOXES GAMES, 18+ (EX NI). TERMS APPLY.

QUEEN & PHILIP GLOSSY SOUVENIR

WILLS & KATE 10th ANNIVERSARY





Revealed: Queen's poignant farewell

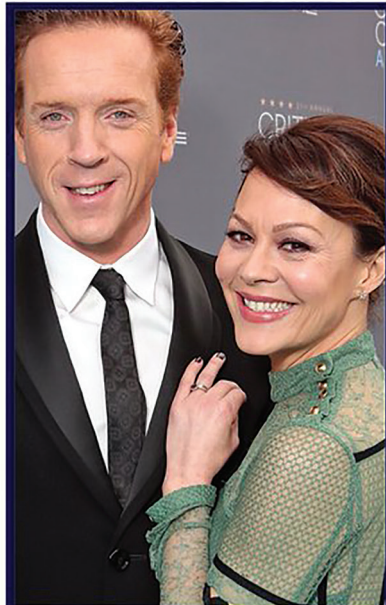
ONE LAST MOMENT WITH HER PRINCE

THE Queen will say a private farewell to Prince Philip before his coffin leaves Windsor Castle for today's funeral.
The monarch, 94, will take a

By **Rebecca English**
Royal Editor

moment to reflect at the duke's side ahead of his final journey to St George's Chapel. Sources say she has been the

'epitome of dignity' this week as she deals with the loss of her husband of 73 years, and has insisted on personally signing off final preparations for the 3pm service. Buckingham Palace has shared a touching unseen picture of the **Turn to Page 2**



'My beautiful wife': With her husband Damian Lewis

Shock cancer death of Helen McCrory, 52 PAGES 15-17

GUIDE TO HISTORIC DAY

Source C – Front page of the *Daily Mirror* (17 April 2021)

mirror.co.uk

DAILY THE HEART OF BRITAIN
Saturday, April 17, 2021 £1.50

Mirror

Mirror of Racing Mirror of Football TV ZLES

4 great extras

FREE

Prince Philip
1921-2021

A life of
duty
SOUVENIR MAGAZINE

Philip souvenir mag

**FAREWELL
MY LOVE**

BY RUSSELL MYERS Royal Editor

ON the eve of her beloved husband's funeral, the Queen released a treasured photo of the two of them at Balmoral.

As the nation falls silent today at 3pm, in honour of Prince Philip, thoughts will turn to our 94-year-old monarch and the loss she must now bear till the end of her reign.

A source said: "The cherished photo evokes happy memories."

FULL STORY: PAGES 4,5,6,7,8&9

TOUCHING Philip and the Queen smile in the sunshine in 2003

Queen's photo tribute to husband as she prepares for funeral

Source B is the front page of the *Daily Mail*, a right-wing UK tabloid newspaper.

Source C is the front page of the *Daily Mirror*, a left-wing UK tabloid newspaper.

The newspapers were published before the death of Queen Elizabeth II. The main headlines refer to the funeral of her husband Prince Philip.

Source B also refers to Helen McCrory, an actor best-known for the *Harry Potter* films and the TV series *Peaky Blinders*.

5* To what extent do **Source B** and **Source C** construct identities?

In your answer you must:

- analyse and compare the ways in which identities are constructed in **Source B** and **Source C**
- use relevant contexts and academic ideas and arguments in your analysis
- draw judgements and conclusions in relation to the question.

[15]

6 Explain how political and economic contexts can influence the distribution and circulation of newspapers in a global context. Use *Telegraph Online* to support your answer.

In your answer you must:

- consider relevant political and economic contexts that can influence the global distribution of newspapers
- use your knowledge and understanding of relevant academic ideas and arguments
- use *Telegraph Online* as an example of how newspapers are distributed and circulated in a global context.

[10]

END OF QUESTION PAPER

OCR

Oxford Cambridge and RSA

Copyright Information

Source A: The Big Issue no 1506, 28 March 2022, www.bigissue.com ©2022 The Big Issue Limited, 113–115 Fonthill Road, Finsbury Park, London, N4 3HH.

Source B: Front page of the *Daily Mail*, 17 April 2021, www.dailymail.co.uk, ©2021 DMG Media, Northcliffe House, 2 Derry St, London W8 5TT.

Source C: Front page of the *Daily Mirror*, 17 April 2021, www.mirror.co.uk, ©2021 Reach plc, One Canada Square, Canary Wharf, London E14 5AP.

OCR is committed to seeking permission to reproduce all third-party content that it uses in its assessment materials. OCR has attempted to identify and contact all copyright holders whose work is used in this paper. To avoid the issue of disclosure of answer-related information to candidates, all copyright acknowledgements are reproduced in the OCR Copyright Acknowledgements Booklet. This is produced for each series of examinations and is freely available to download from our public website (www.ocr.org.uk) after the live examination series.

If OCR has unwittingly failed to correctly acknowledge or clear any third-party content in this assessment material, OCR will be happy to correct its mistake at the earliest possible opportunity.

For queries or further information please contact The OCR Copyright Team, The Triangle Building, Shaftesbury Road, Cambridge CB2 8EA.

OCR is part of Cambridge University Press & Assessment, which is itself a department of the University of Cambridge.