

Monday 30 January 2012 – Afternoon

A2 GCE HEALTH AND SOCIAL CARE

F921/01 Anatomy and Physiology in Practice

Candidates answer on the Question Paper.

OCR supplied materials:
None

Other materials required:
None

Duration: 1 hour 30 minutes



Candidate forename		Candidate surname	
-----------------------	--	----------------------	--

Centre number						Candidate number				
---------------	--	--	--	--	--	------------------	--	--	--	--

INSTRUCTIONS TO CANDIDATES

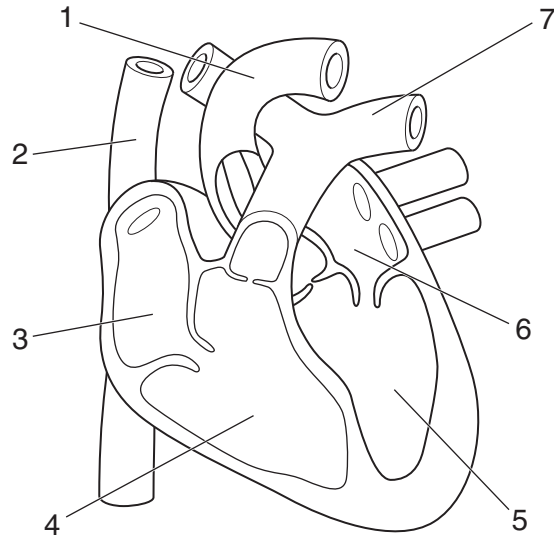
- Write your name, centre number and candidate number in the boxes above. Please write clearly and in capital letters.
- Use black ink. HB pencil may be used for graphs and diagrams only.
- Read each question carefully. Make sure you know what you have to do before starting your answer.
- Write your answer to each question in the space provided. If additional space is required, you should use the lined pages at the end of this booklet. The question number(s) must be clearly shown.
- Answer **all** the questions.
- Do **not** write in the bar codes.

INFORMATION FOR CANDIDATES

- The number of marks is given in brackets [] at the end of each question or part question.
- The total number of marks for this paper is **100**.
- You will be awarded marks for the quality of written communication where an answer requires a piece of extended writing.
- This document consists of **16** pages. Any blank pages are indicated.

1

2



Structure of the heart

(a) Identify each of the structures labelled 1–7.

- 1
- 2
- 3
- 4
- 5
- 6
- 7 [7]

(b) Identify **three** different types of blood cell and describe the functions of each.

.....

.....

.....

.....

.....

.....

.....

.....

.....

.....

.....

.....

.....

.....

.....

.....

.....

.....

.....

.....

.....

.....

.....

.....

.....

.....

.....

.....

.....

.....

.....

.....

.....

..... [9]

(c) Identify **four** ways that a vein differs from an artery.

1

.....

.....

.....

2

.....

.....

.....

3

.....

.....

.....

4

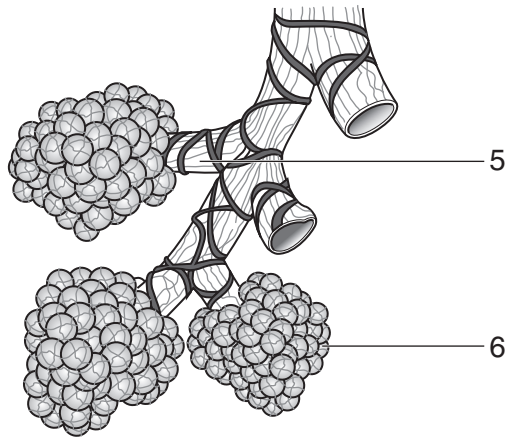
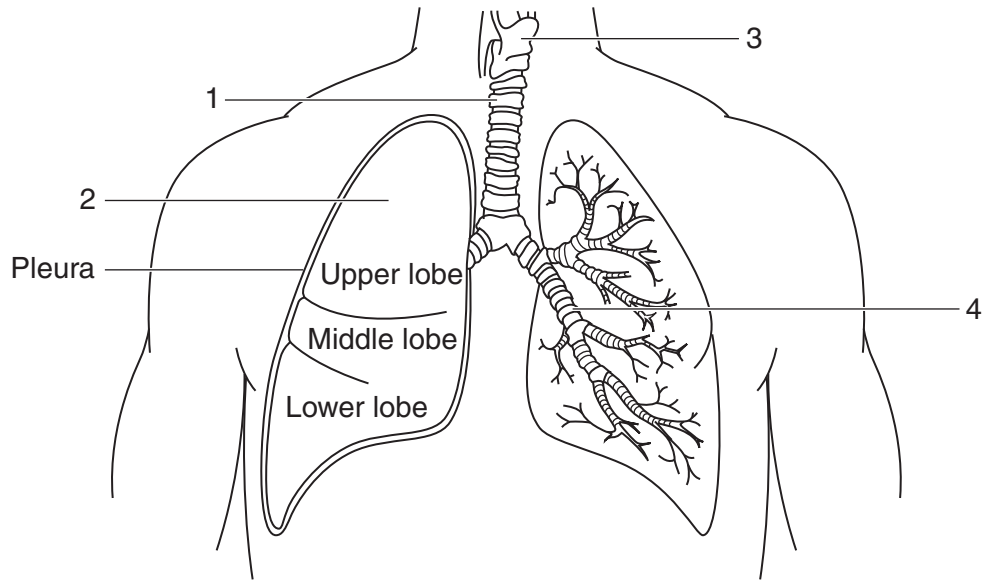
.....

.....

.....

..... [4]

[Total: 20]



The chest and lungs

(a) Identify each of the structures labelled 1–6.

- 1
- 2
- 3
- 4
- 5
- 6 **[6]**

(b) Identify the techniques that are used to diagnose the respiratory dysfunction that you have studied. Explain how these techniques help provide a diagnosis.

.....
.....
.....
.....
.....
.....
.....
.....
.....
.....
.....
.....
.....
.....
.....
.....
.....
.....
.....
.....
.....
.....
.....
.....
.....
.....
.....
.....
.....
.....
.....
.....
.....
.....
.....
.....
.....
.....
.....
.....

..... [10]

(c) Explain the treatment for a respiratory dysfunction that you have studied.

.....

.....

.....

.....

.....

.....

.....

.....

.....

.....

.....

..... [4]

[Total: 20]

A series of 25 horizontal dotted lines spanning the width of the page, providing a template for handwriting practice.

A series of 25 horizontal dotted lines spanning the width of the page, providing a template for writing.

