

**Entry Level Certificate**

**R399**

**FRENCH  
Reading**

**Topic: Home and Local Area**

**Specimen Paper**

Time: 10 minutes

Candidates answer on the question paper.

**Additional materials: none**

Candidate  
Forename

Candidate  
Surname

Centre Number

--	--	--	--	--

Candidate  
Number

--	--	--	--

### INSTRUCTIONS TO CANDIDATES

- Write your name in capital letters, your Centre Number and Candidate Number in the boxes above.
- Use black ink.
- Read each question carefully and make sure you know what you have to do before starting your answer.
- Answer **all** the questions.
- Do not write in the bar codes.
- Do not write outside the box bordering each page.
- Write your answer to each question in the space provided.

### INFORMATION FOR CANDIDATES

- The number of marks for each question is given in brackets [ ] at the end of each question or part question.
- The total number of marks for this paper is 10.

#### FOR EXAMINER'S USE

1		6	
2		7	
3		8	
4		9	
5		10	
<b>TOTAL</b>			

This document consists of 7 printed pages and 1 blank pages.

**Part 1**

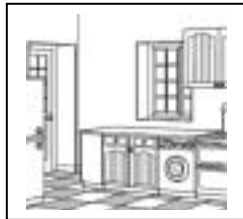
**Questions 1-5**

**Open House**

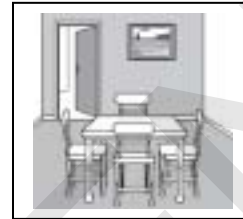
Look at the pictures.



**A**



**B**



**C**



**D**



**E**



**F**



**G**

Match the word to the picture.

Write the correct letter in each box.

**Example**

Cuisine

The answer is "B".

**Question 1** Chambre**[1]****Question 2** Salle de bain**[1]****Question 3** Douche**[1]****Question 4** Salle à manger**[1]****Question 5** Fauteuil**[1]****[5 marks]**

**Part 2****Questions 6 and 7****Sylvie and her friends go to town.**

Where will the friends go?

- A *café du centre*
- B *cinéma ABC*
- C *patinoire de Marseille*
- D *centre commercial*
- E *stade de Paris*

Write the correct letter in each box.

**Example**

We could go to the café.

The answer is "A".

**Question 6:** Let's go to the stadium.**[1]****Question 7:** We could meet at the shopping centre.**[1]****[2 marks]**

**Part 3****Questions 8-10****Suzanne's Family**

Read Suzanne's e-mail and the questions.  
Tick the correct box.

Salut, Marie, je parle de ma famille. Maman est petite et Papa est grand. Nous habitons un appartement.

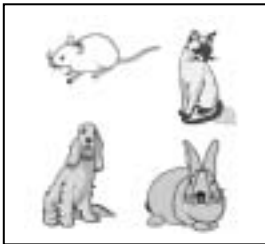
J'adore mon oncle Olivier et ma tante Martine. Ma tante aime les animaux et elle a un grand chien noir.

À bientôt

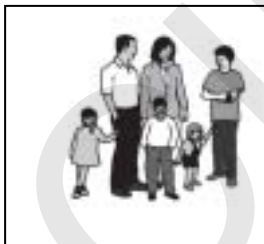
Suzanne

**Example**

Suzanne is talking about her...



**A**



**B**

✓



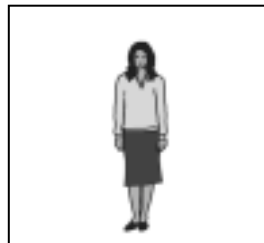
**C**

The answer is "B".

**Question 8:** Her mum is...



**A**



**B**



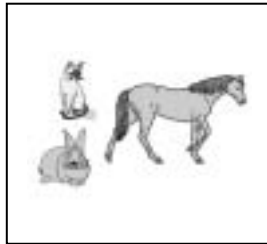
**C**

[1]

Question 9: Her auntie likes...



A	
---	--



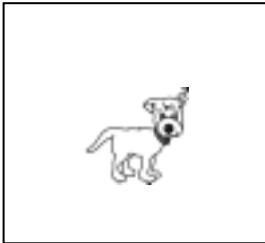
B	
---	--



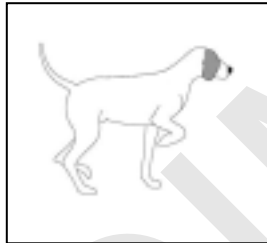
C	
---	--

[1]

Question 10: Her dog is...



A	
---	--



B	
---	--



C	
---	--

[1]

[3 marks]

[Total for test: 10 marks]

SPECIMEN

### ***Copyright Information:***

OCR is committed to seeking permission to reproduce all third-party content that it uses in its assessment materials. OCR has attempted to identify and contact all copyright holders whose work is used in this paper. To avoid the issue of disclosure of answer-related information to candidates, all copyright acknowledgements are reproduced in the OCR Copyright Acknowledgements Booklet. This is produced for each series of examinations, is given to all schools that receive assessment material and is freely available to download from our public website ([www.ocr.org.uk](http://www.ocr.org.uk)) after the examination series.

If OCR has unwittingly failed to correctly acknowledge or clear any third-party content in this assessment material, OCR will be happy to correct its mistake at the earliest possible opportunity.

For queries or further information please contact the Copyright Team, First Floor, 9 Hills Road, Cambridge CB2 1GE.

OCR is part of the Cambridge Assessment Group; Cambridge Assessment is the brand name of University of Cambridge Local Examinations Syndicate (UCLES), which is itself a department of the University of Cambridge.



Topic: Home and Local Area (Reading)

**Specimen Mark Scheme**

The maximum mark for this paper is 10.

SPECIMEN

READING		
Question Number	Answer	Max Mark
	<b>Part 1</b>	
1	A	[1]
2	E	[1]
3	G	[1]
4	C	[1]
5	F	[1]
	<b>Part 2</b>	
6	E	[1]
7	D	[1]
	<b>Part 3</b>	
8	A	[1]
9	B	[1]
10	C	[1]
<b>READING Total</b>		<b>[10]</b>