

Wednesday 8 June 2016 – Afternoon

GCSE GEOGRAPHY B (and Short Course)

B563/A772/01/02/RB Key Geographical Themes (Foundation and Higher Tier)

RESOURCE BOOKLET



INFORMATION FOR CANDIDATES

- The following abbreviations may be used:
MEDC – More Economically Developed Country
LEDC – Less Economically Developed Country
EU – European Union which includes the United Kingdom
- The questions tell you which resources you need to use.
- This document consists of **12** pages. Any blank pages are indicated.

INSTRUCTION TO EXAMS OFFICER/INVIGILATOR

- Do not send this Resource Booklet for marking; it should be retained in the centre or recycled. Please contact OCR Copyright should you wish to re-use this document.

CONTENTS OF THE RESOURCE BOOKLET

- Fig. 1 – Monkstone Point (A772)
- Fig. 2 – The hydrological cycle (A772)
- Fig. 3 – Population structure of Japan (MEDC) (B563)
- Fig. 4 – A squatter settlement in the city of Nairobi in Kenya (LEDC) (B563)
- Fig. 5 – Land use zones in an LEDC city (B563)
- Fig. 6a – Risk of death due to severe drought (B563)
- Fig. 6b – Severe drought events 2000–2010 (B563)
- Fig. 7 – Some drought management methods in MEDCs (B563)
- Fig. 8 – Tropical storm shelter in Bangladesh (B563)
- Fig. 9 – Employment structure of three countries (B563, A772)
- Fig. 10 – Workers in Tanzania (B563/01, A772/01)
- Fig. 11 – A person at work (B563/02, A772/02)
- Fig. 12 – Aid sent from the USA to the Philippines after a natural disaster (B563, A772)

Fig. 1 Monkstone Point

(For use with A772 Question 1)



Fig. 2 The hydrological cycle

(For use with A772 Question 1)

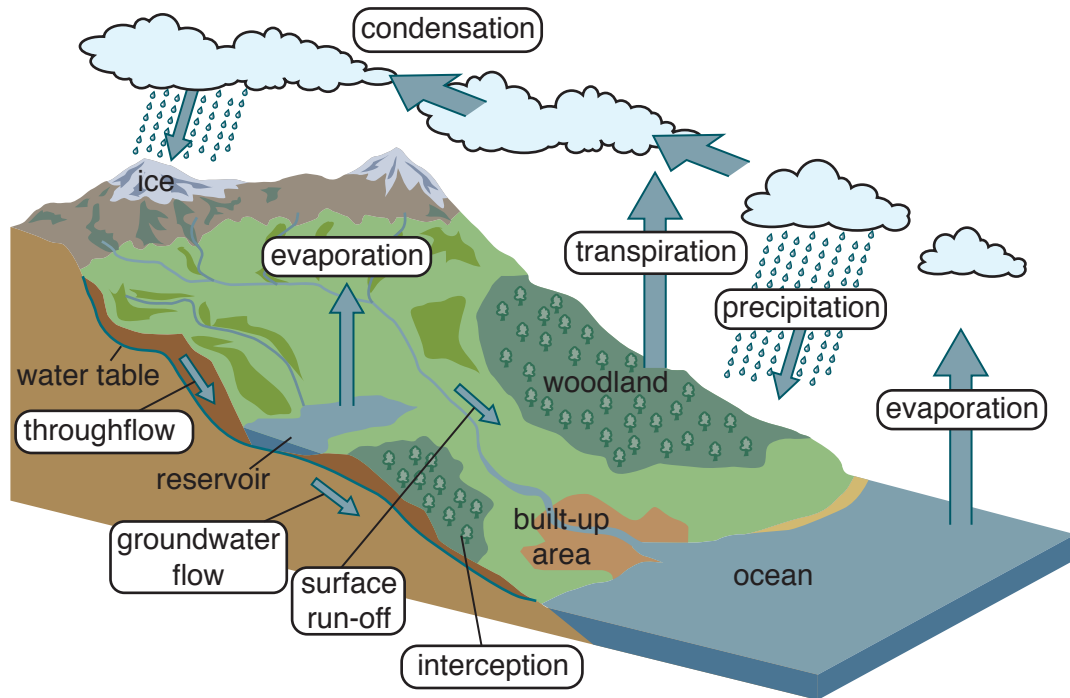


Fig. 3 Population structure of Japan (MEDC)

(For use with B563 Question 1)

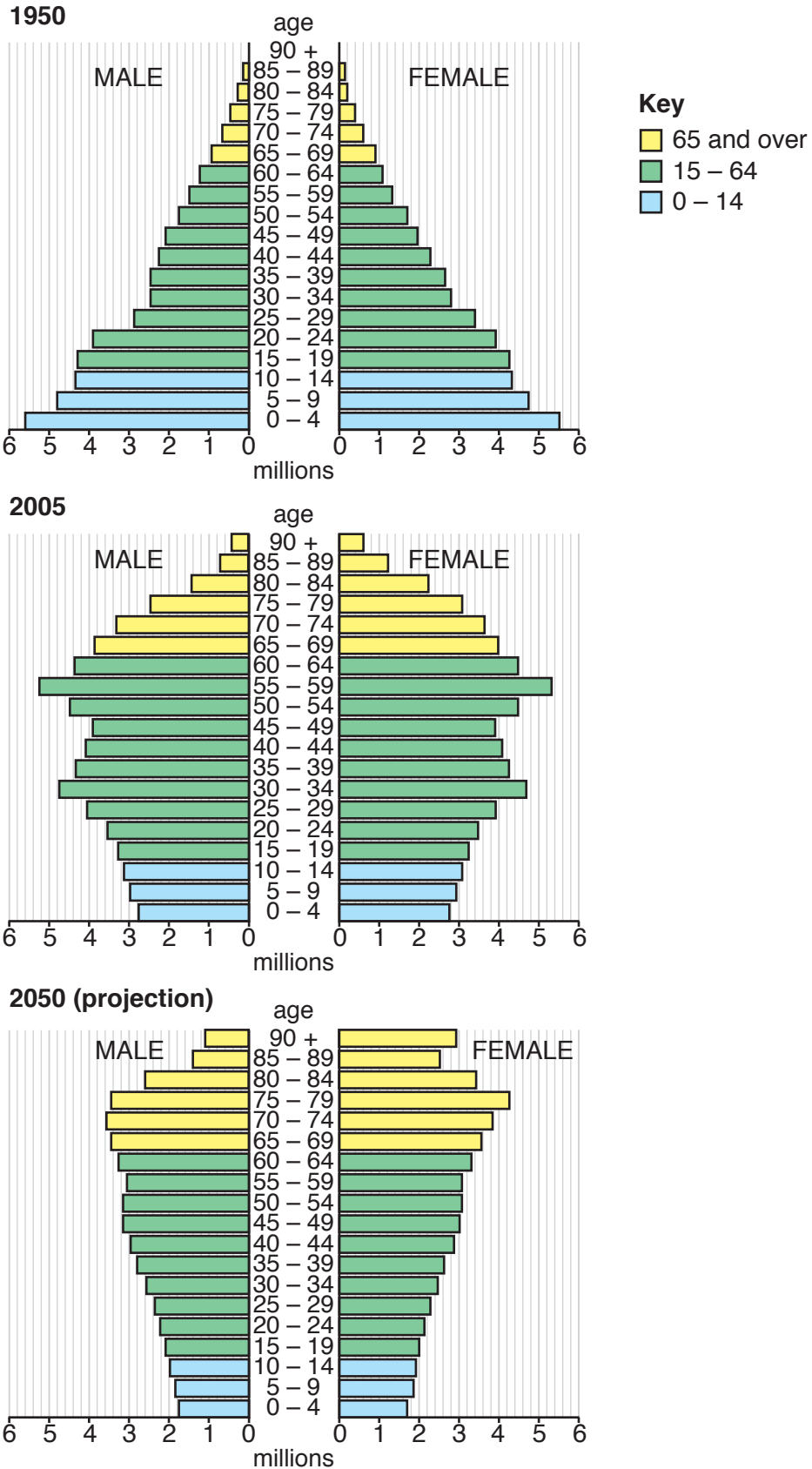


Fig. 4 A squatter settlement in the city of Nairobi in Kenya (LEDC)

(For use with B563 Question 1)

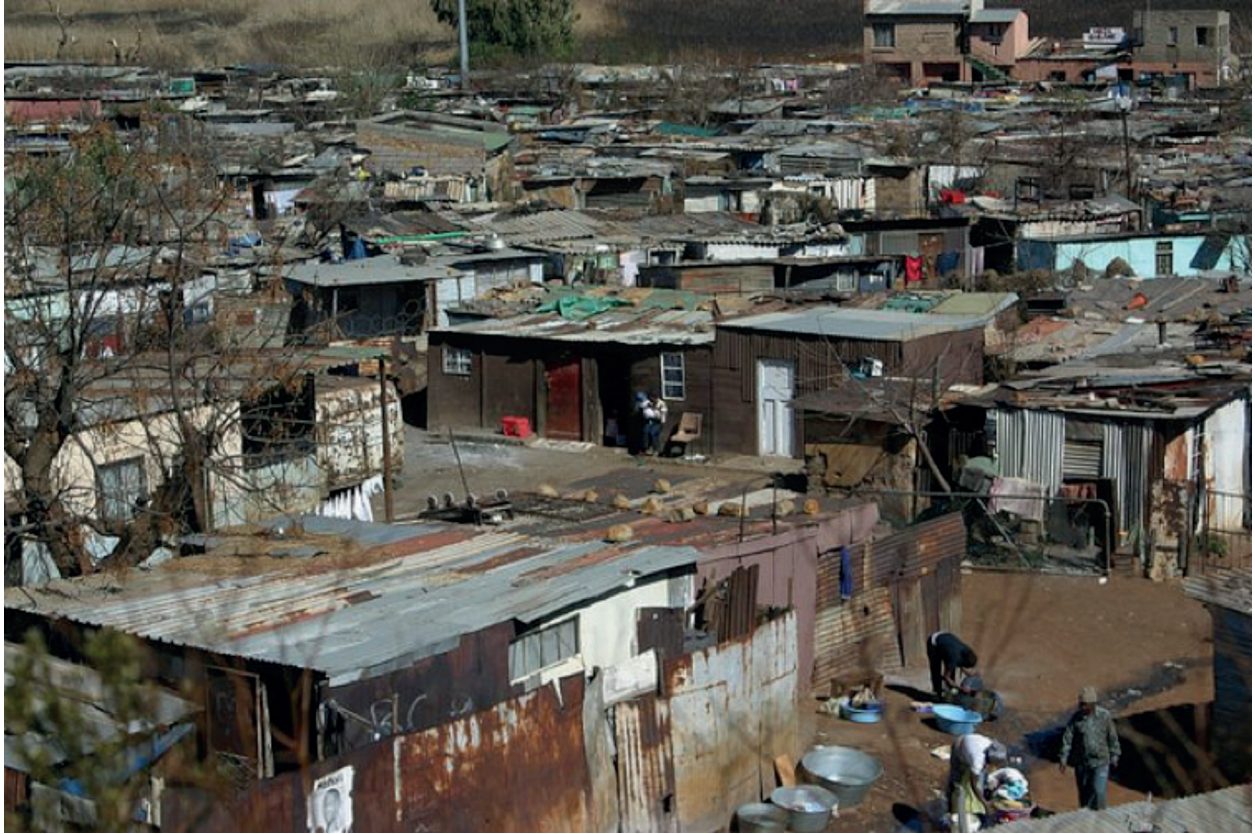


Fig. 5 Land use zones in an LEDC city

(For use with B563 Question 1)

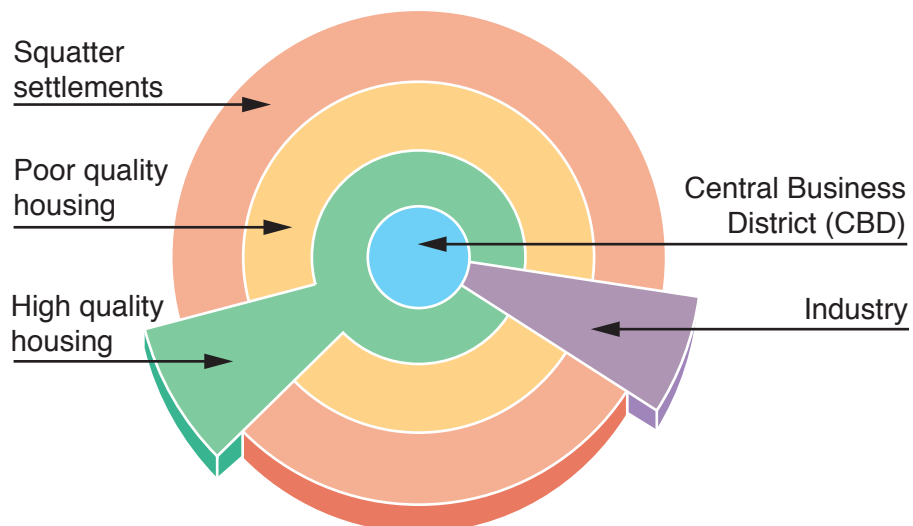


Fig. 6a Risk of death due to severe drought

(For use with B563 Question 2)

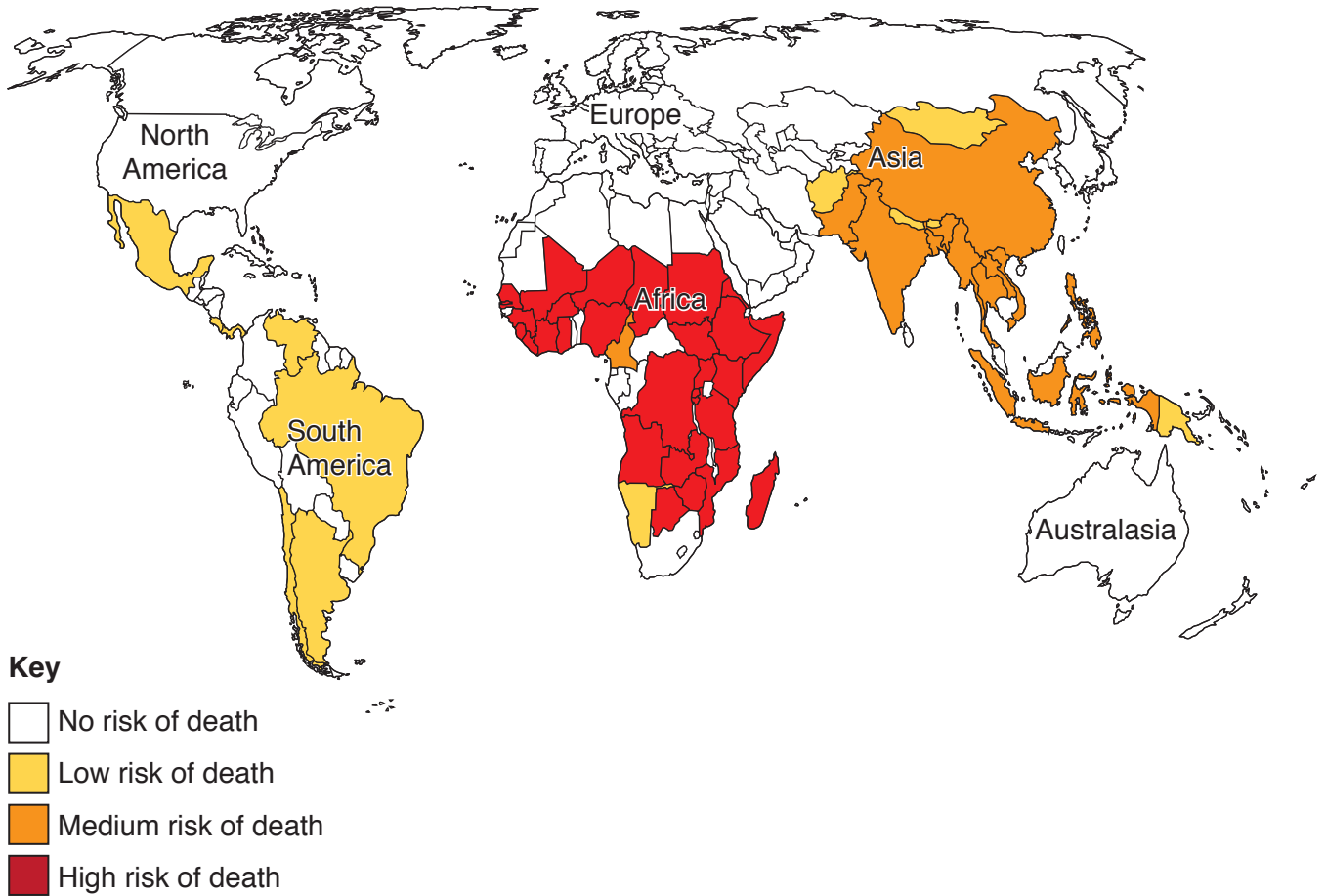


Fig. 6b Severe drought events 2000–2010

(For use with B563 Question 2)

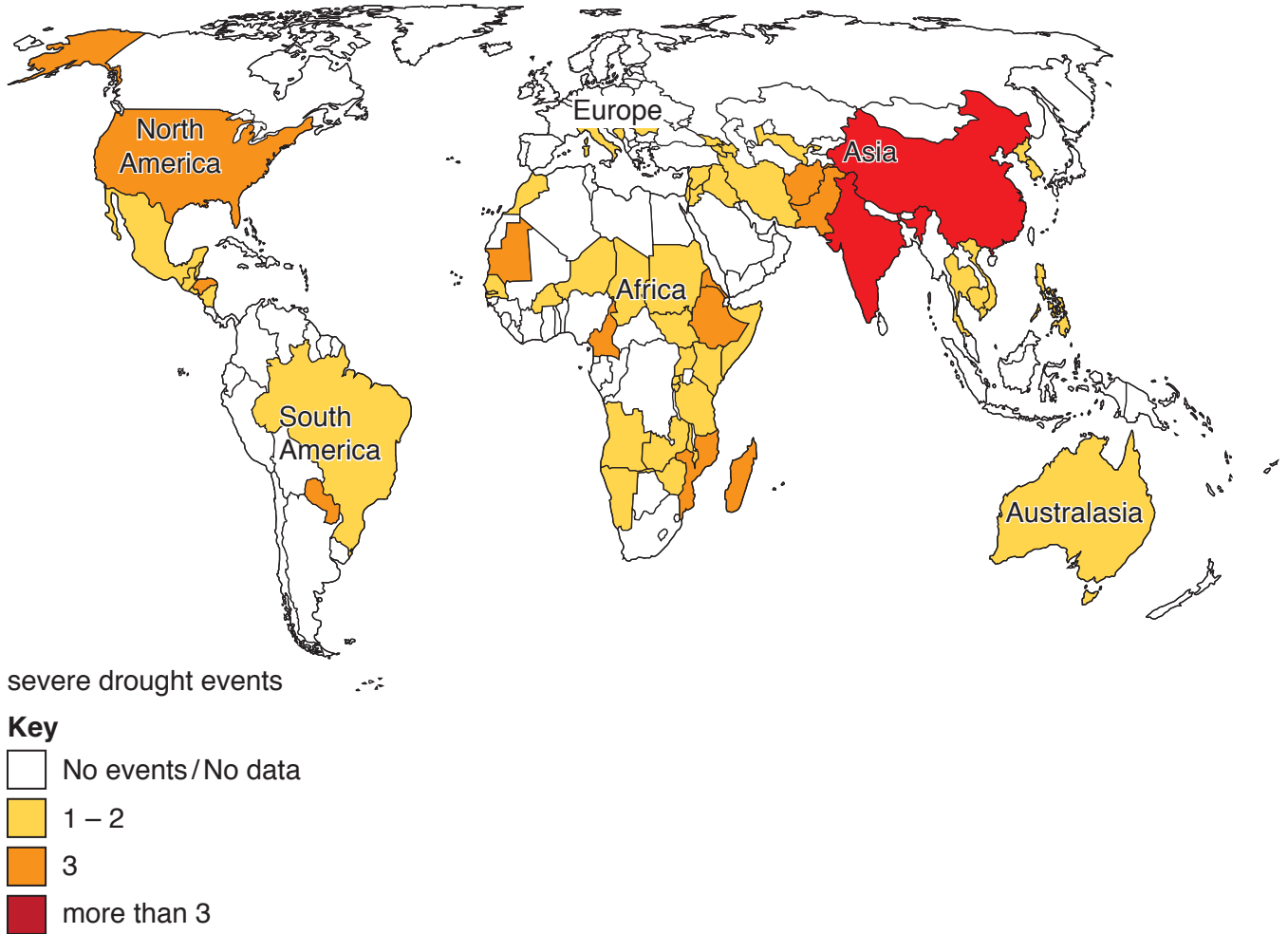


Fig. 7 Some drought management methods in MEDCs

(For use with B563 Question 2)

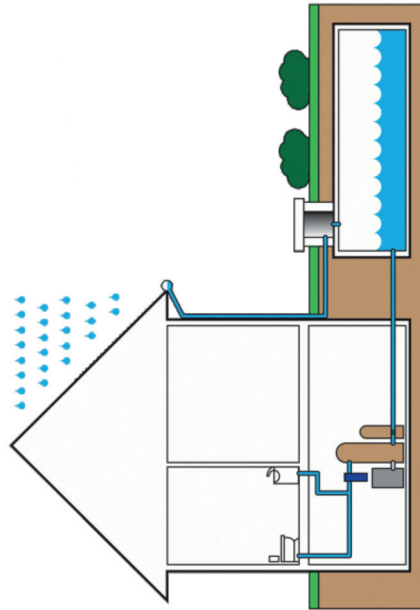
Method 1



Method 3



Method 2



Method 4

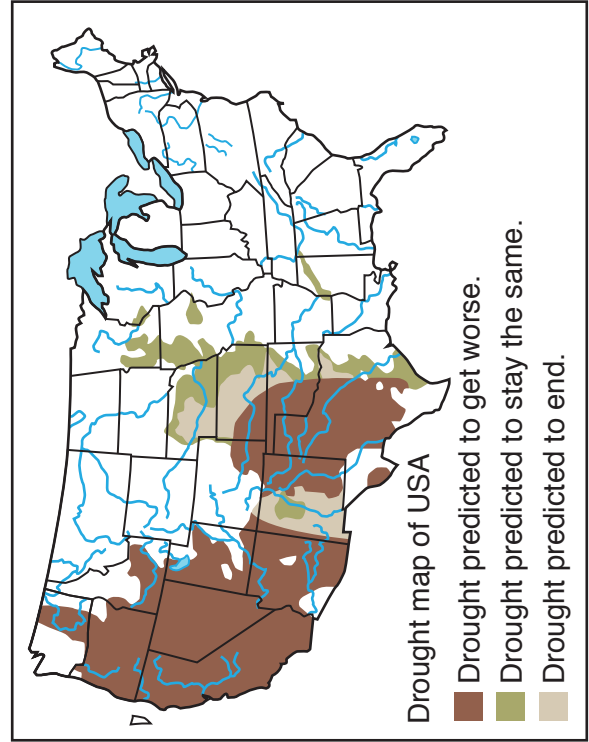


Fig. 8 Tropical storm shelter in Bangladesh

(For use with B563 Question 2)



Fig. 9 Employment structure of three countries

(For use with B563 Question 3 and A772 Question 2)

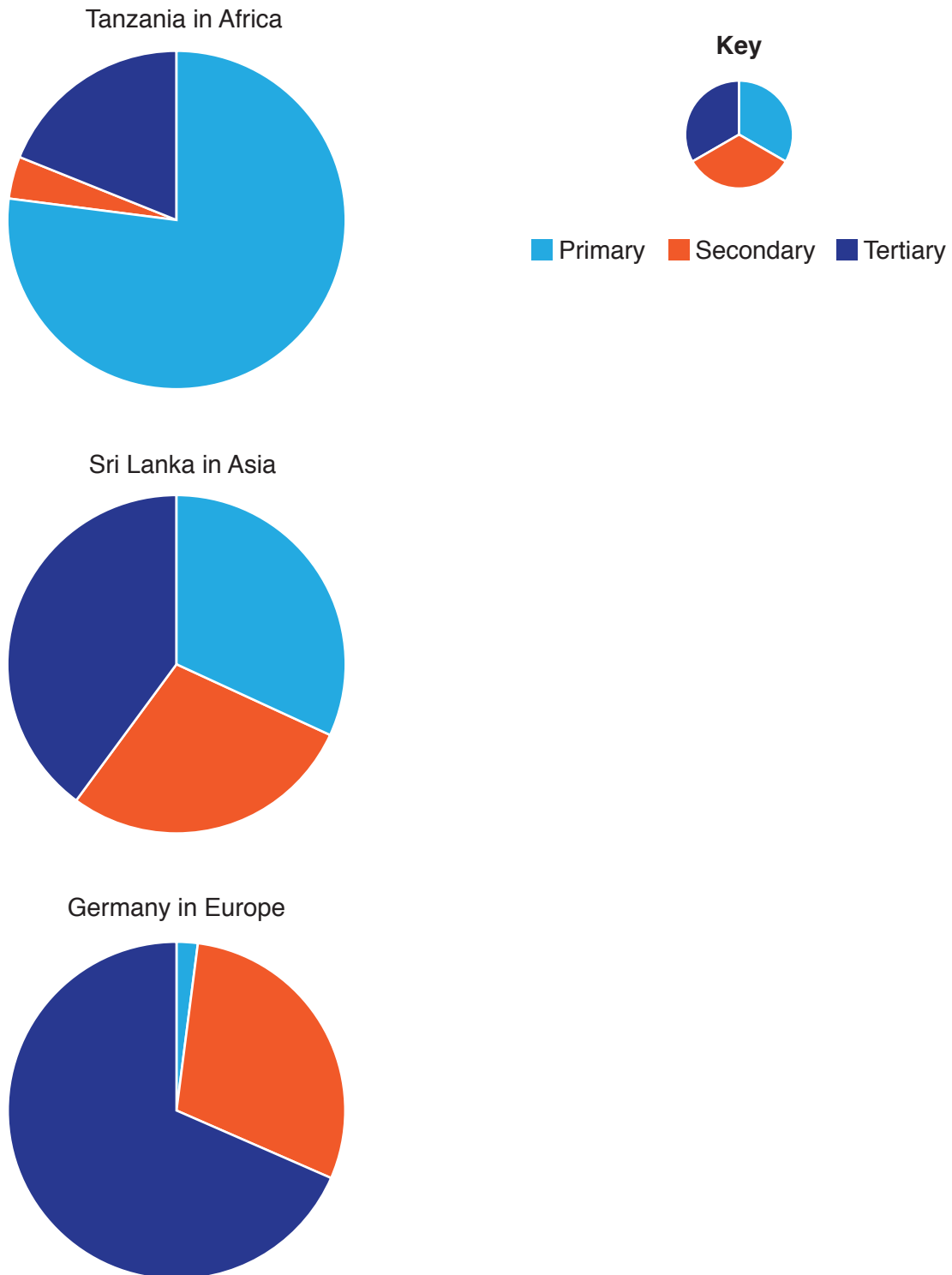


Fig. 10 Workers in Tanzania

(For use with B563/01 Question 3 and A772/01 Question 2)

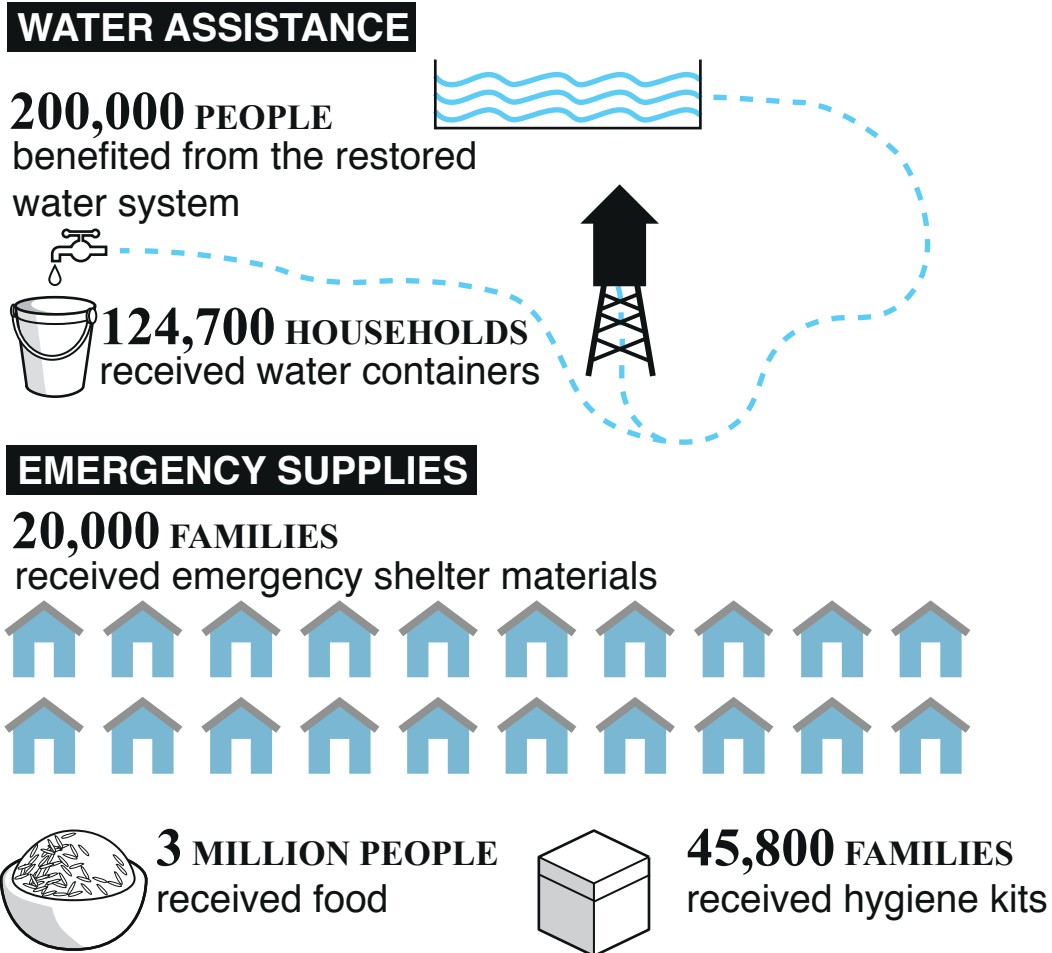
**Fig. 11 A person at work**

(For use with B563/02 Question 3 and A772/02 Question 2)



Fig. 12 Aid sent from the USA to the Philippines after a natural disaster

(For use with B563 Question 3 and A772 Question 2)



Copyright Information

OCR is committed to seeking permission to reproduce all third-party content that it uses in its assessment materials. OCR has attempted to identify and contact all copyright holders whose work is used in this paper. To avoid the issue of disclosure of answer-related information to candidates, all copyright acknowledgements are reproduced in the OCR Copyright Acknowledgements Booklet. This is produced for each series of examinations and is freely available to download from our public website (www.ocr.org.uk) after the live examination series.

If OCR has unwittingly failed to correctly acknowledge or clear any third-party content in this assessment material, OCR will be happy to correct its mistake at the earliest possible opportunity.

For queries or further information please contact the Copyright Team, First Floor, 9 Hills Road, Cambridge CB2 1GE.

OCR is part of the Cambridge Assessment Group; Cambridge Assessment is the brand name of University of Cambridge Local Examinations Syndicate (UCLES), which is itself a department of the University of Cambridge.