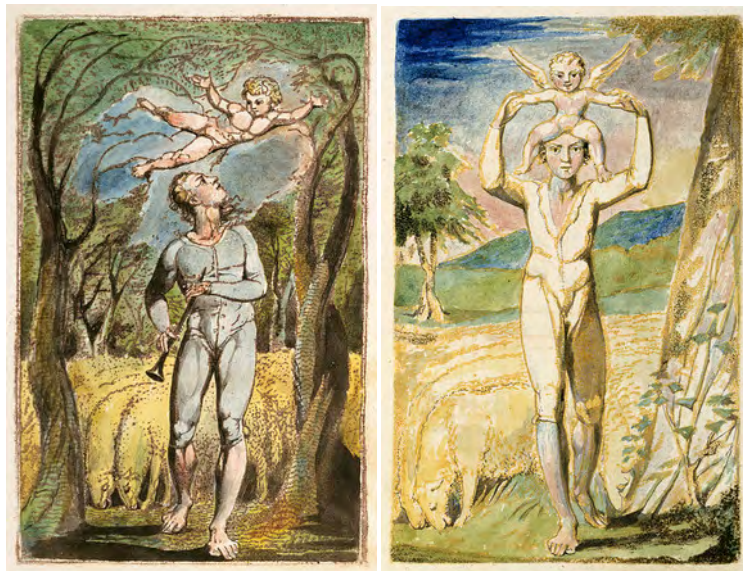


# Learner Resource 1 Introduction to "Introduction"

Look at the two frontispieces from *Songs of Innocence and Experience* (*Shewing the Two Contrary States of the Human Soul*). Work in pairs to decide which is "Innocence" and which is "Experience". Give three reasons for your decision.



Now look at the following words and allocate them to the picture you think that they best describe:

**freedom, control, the church, rationalism, creativity, pastoral.**

One method of analysing these two images is to consider the differences: obviously, both feature a central figure, a cherub, trees, a landscape, sheep, but what changes? It is possible that the changes symbolise a feeling, action or theme.

Decide in your pair what three features might be symbols.

Pass your three onto the next pair, who should choose one to analyse. (For example, the cherub. It may symbolise love and innocence in both images, but it is controlled and restrained in the first image etc.)

In your feedback, as a class discuss the differences in your interpretations.

Look at the following list of phrases, and allocate each one to the appropriate image. Once you have done this, refer back to the poem "Introduction" from *Songs of Innocence* to see if you are right.

Valleys wild	Ancient trees	Starry floor
The bard	Lapsed soul	Watry shore
Pleasant glee	Rural pen	Stain'd the water clear
Happy pipe	Dewy grass	Cloud
Wept with joy	Fallen, fallen light	A child
Holy word	Every child	
Merry cheer	Song about a lamb	